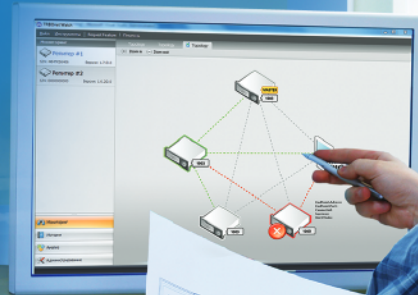




# TRBOnet.Watch

The Best Dispatch Solution



Solution for administering digital radio systems

**TRBOnet.Watch** is a client-server Windows application that monitors all traffic on Motorola MOTOTRBO™ IP Site Connect, Capacity Plus systems or single repeaters. It displays transmitted GPS, ARS, Voice, Text Messages, System and User data with RSSI, source and destination radio ID's, Peer ID's. TRBOnet Watch helps to balance a channel loading, define and solve problems in a radionetwork.

## TRBOnet.Watch Features

- + Monitoring and Diagnostic of Digital channels
- + IPSC / Capacity Plus System Topology
- + RF Quality Control Map
- + Analytics Module
- + Reporting
- + Online Repeater Alarm Control
- + Email notifications
- + Basic / Enhanced Privacy Support

## System Requirements

**Platform**  
32-bit or 64-bit Pentium III (Pentium IV recommended) or compatible processor

**Memory**  
minimum 512 MB

**Hard Disk Space**  
Minimum 50 MB of disk space for a full installation  
Additional hard disk space is required for database

**Database**  
MS SQL Server 2005/2008 R2 Express Edition or higher

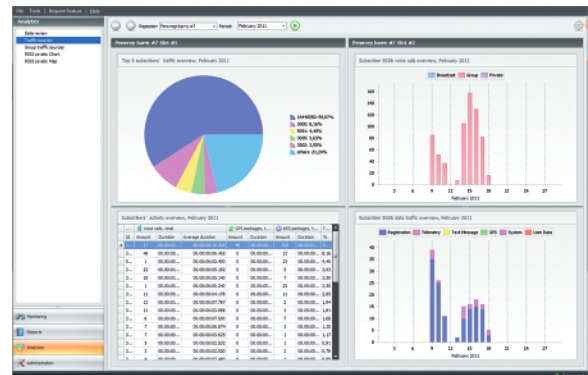
**Operating System**  
Windows XP/Vista/Win7/Server

## Sales and Support

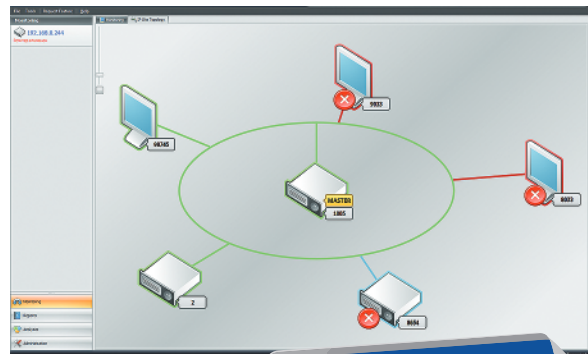


B.C. Communications Inc.  
106-1515 Barrow Street  
North Vancouver, B.C. V7J 1B7  
604 985 0340 | info@bccommunications.ca

## LIVE MONITORING



## TOPOLOGY



**A must for IPSC & CapPlus**

