

Jetson



BALANCE BIKE

-MANUAL-

TABLE OF CONTENTS

A.	Introduction	3
B.	Included in the Box	4
C.	Features and Specs	5
D.	Assembly	5
E.	Adjusting the Seat	8
F.	Riding the Balance	11
G.	Safety Warnings	12
H.	Warranty	14
I.	Product Registration	15

INTRODUCTION

Congratulations on your new Jetson Balance Bike! The Balance is an innovative and fun gravity bike, ready to take on everyday use. Before your first ride, check whether the wheels are damaged, or parts are loose. If there are any abnormalities, please contact Jetson Customer Support at 1-888-976-9904 or email us at customerservice@jetsonbike.com.

This product manual can help you understand, use, and maintain your Balance. In order to avoid danger caused by collisions, falls, and loss of control, please use caution and learn how to ride the Balance safely. Jetson and authorized dealers cannot be held liable for injury or damage caused from riding the Balance. Users ride at their own risk.

The rider is responsible for consequences caused by violating warnings or improper operations.

If you want to return this product for any reason, be sure to first call or email us before taking it back to the store so we can assist you.

INCLUDED IN THE BOX



- Balance Bike (Partially Assembled)
- 2x Bearing Bushings
- 2x Caps
- 1x Stem Clamp
- 1x Allen Wrench



1. Front Wheel
2. Front Fork
3. Front Frame

4. Handlebar
5. Seat
6. Rear Wheel

FEATURES AND SPECS

MODEL: BALANCE

WHEEL SIZE: 10"

PRODUCT WEIGHT: 9.5 LBS

WEIGHT LIMIT: 75 LBS

RECOMMENDED AGE: 2+

PRODUCT DIMENSIONS: 33" x 17" x 23"

FRAME: ALUMINUM ALLOY

ASSEMBLY

1. Insert the two Bearing Bushings onto the Front Frame.



2. Place a Cap onto the Front Fork.



Then, slide the Front Fork through the Front Frame until it rests on the Cap and Bearing Bushing.



Place the remaining Cap onto the top of the Front Fork.



3. Place the Stem Clamp on the top of the Front Fork and place the Handlebar into the Stem Clamp. Tighten the Stem Clamp using the included Allen Wrench. Make sure the Handlebar is tight and secure.



Slide the Handlebar into the Stem Clamp. Tighten the Stem Clamp using the included Allen Wrench. Make sure the Handlebar is tight and secure.

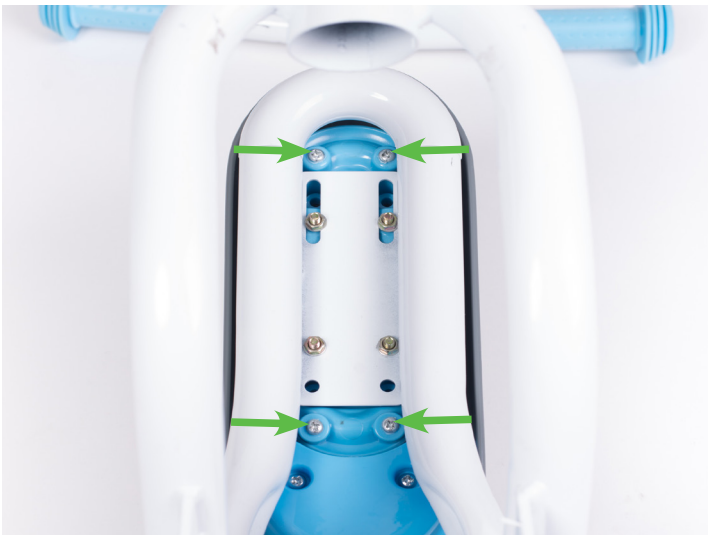


Run the Bolt and Washer through the Stem Clamp and tighten using the included Allen Wrench while holding the Handlebar at the desired height. Make sure the Handlebar is tight and secure.



ADJUSTING THE SEAT

1. To adjust the Seat, flip over the Balance so the bottom of the Seat is facing up. Use a screwdriver to remove the four screws at the bottom of the Seat.

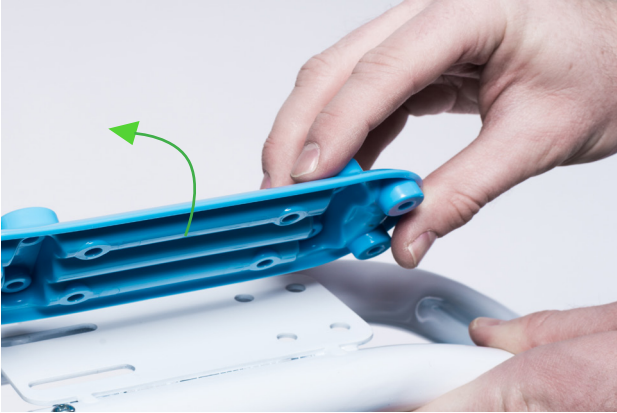


2. Remove the four bolts that connect the Seat Adjuster to the bike frame.

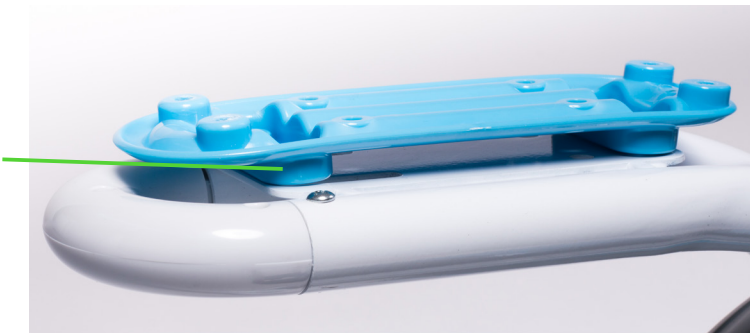
Seat Adjuster



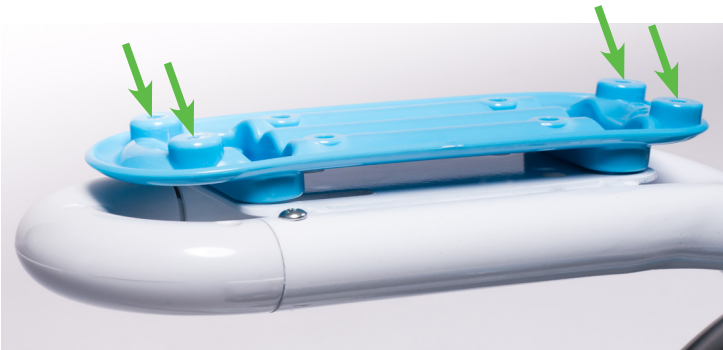
3. Flip the Seat Adjuster so it rests on the Seat Pegs.



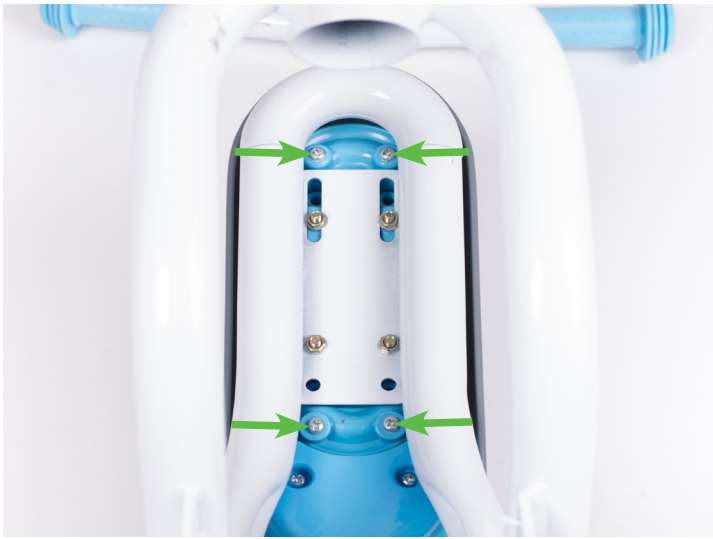
Seat
Peg



4. Place the four bolts and nuts back into the Seat Adjuster and tighten.



5. Place the Seat over the Seat Adjuster. Run the four screws back through the bottom of the Seat and tighten.



Make sure the Seat is tight and secure.



RIDING THE BALANCE

LEAN TO STEER

The Lean to Steer function makes it easy to steer the Balance, just shift your weight in the direction you would like the Balance to go. Be careful to not lean too hard on the handlebars.

FOOT POSITION

Before riding, put your foot as close as possible to the front of the Deck, and your other foot on the ground. Make sure that your driving route is clear. To start riding, boost yourself forward with your foot that is on the ground. Keep one foot behind the other, (it's more comfortable to place one foot forward and the other one turned at 70-90°). It will help you gain more stability.

SAFETY WARNINGS

- This product is suitable for children age 2+, and for use on private property and closed courses. Always ride defensively, and watch out for potential obstacles that may catch your wheel or cause you to swerve suddenly.
- The Balance should always be used under adult supervision.
- Always check any local laws or regulations which may affect where the Balance may be used.
- Ride at your own risk and use common sense. Any rider that is unable to fit comfortably on the product should not attempt to ride it. All decisions on who is allowed to ride the Balance should be made based on their maturity, skill, and ability to follow the rules.
- The Balance is designed for one rider. Never carry passengers, and do not attach the Balance to other objects.
- This product was manufactured for performance and durability, but is not impervious to damage. Jumping and aggressive riding should be avoided under all circumstances. The rider assumes all responsibility and risk associated with high-stress activity.
- Keep your fingers and other body parts away from all other moving components when operating the Balance. Keep your hands on the handlebars at all times.
- Do not wear headphones or use a cell phone while operating the Balance.
- Do not operate the Balance in wet or icy weather, and never immerse the product in water.
- Avoid excessive speeds when riding downhill, as it increases the risk of accident and injury. Avoid wet, slick, bumpy, uneven or rough surfaces while using the Balance. Never risk damaging surfaces such as carpet and flooring by using the product indoors.
- Do not ride at night, or when visibility is limited.
- Always wear proper protective equipment, such as a helmet, elbow pads, and knee pads. Athletic shoes with rubber soles are best for riding the Balance.
- Never operate the product barefooted or in sandals, and keep shoelaces tied and away from the wheels.
- The brake may become hot while operating, do not touch the brake with your bare skin.
- Make sure all screws are tightened, and all clamps and locks are properly secured before riding.

CALIFORNIA WARNING

This product contains chemicals, including lead, which are known to the state of California to cause cancer, birth defects, and other medical conditions.

MODIFICATIONS

Do not attempt to disassemble, modify, repair, or replace the Balance or any components of the unit without instruction from Jetson Customer Support. This will void any warranty, and can lead to malfunctions which may cause injury.

ADDITIONAL OPERATION CAUTIONS

Do not lift the Balance off the ground while it is on and the wheels are in motion. This can result in freely spinning wheels, which may cause injury to yourself or others nearby. Do not jump on or off the Balance, and do not jump while using it. Always keep your feet firmly planted on the deck while in operation.

LIMITED 1 YEAR WARRANTY

TO QUALIFY FOR WARRANTY SERVICE:

1. You must present a copy of the sales receipt from an approved retail partner within 90 days of purchase.
2. This product cannot be used for rental or commercial use.
3. This product cannot be used for competition.

LIMITATIONS OF LIABILITY

- This Limited 1 Year Warranty is non-transferable after the product's initial sale.
- No unapproved modifications can be made to the product, its performance or otherwise, in order for this Limited 1 Year Warranty to remain in effect.
- No reimbursement is provided for towing, loss of time, loss of use, inconvenience, incidental or consequential damages.
- Warranty is void if weather related water damage is determined. Owner is responsible for storage and protection from weather.
- Jetson® makes no warranty with respect to products or trade accessories not made by Jetson®, including, but not limited to, motors, tires, wheels, and batteries, such products or trade accessories, such items being subject to the original manufacturer's warranty, if any.
- This Limited 1 Year Warranty does not cover minor surface blemishes, rips, tears, or other cosmetic damages due to normal use, or other intentional or unintentional damage to the product.
- This Limited 1 Year Warranty will not cover any damage which results from the application of improper cleaners, solvents or chemicals to the product, water damage, smoke or soot, or from exposure to saltwater, sea breeze or salt.
- This Limited 1 Year Warranty will not cover any damage which results from aging, such as fading of paint, deterioration of plated surfaces, deterioration of rubber or plastics, or rusting.
- This Limited 1 Year Warranty does not cover improper repair or misdiagnoses of problems.
- This Limited 1 Year Warranty only covers parts due to manufacturer defect.
- Damage due to misuse or neglect, use other than as specified in the Owner's Manual, or use under abnormal conditions are not covered by this Limited 1 Year Warranty.

OWNER'S WARRANTY RESPONSIBILITIES

As the device's owner, you are responsible for the performance of the required maintenance. You may be denied a warranty claim solely because of your failure to ensure the performance of all scheduled maintenance. As the owner, you should be aware that you may be denied your warranty coverage if your device or a part has failed due to abuse, neglect, improper maintenance, or unapproved modifications. For any issue regarding your Jetson® product, call toll free 1-888-976-9904, or email customerservice@jetsonbike.com.

PRODUCT REGISTRATION

Please complete and mail this card within 10 days of purchase or go to <https://www.ridejetson.com/product-registration>.

Name: _____

Address: _____

City, State, Zip: _____

Email: _____

Home Phone: _____ Gender: _____

Purchase Date: _____ Purchased From: _____

Serial Number: _____

Is this your first Jetson product?: _____

Other similar product owned before: _____

- Why did you buy this product?:
- For myself
 - For my child
 - For my grandchild
 - Gift for someone else (adult)
 - Gift for someone else (child)

How did you hear about the Jetson Balance?: _____

Complete this form and mail it to:

**Attention: Product Registration
Jetson Electric Bikes
1 Rewe Street
Brooklyn, NY 11211**

Jetson



BALANCE BIKE