

JETSON

Light-Up Trike

A guide for your ride.

IMPORTANT: READ CAREFULLY AND RETAIN FOR FUTURE REFERENCE.

MODEL SKU: JCOCO-TRK

U.S. Patent No. 11,155,315



**Jetson's top two riding rules:
Be safe. Have fun!**

Contents

Safety Warnings	3
Warranty Coverage	5
1. About Your Product	
What's in the Box	6
Specs & Features	9
Rider Suitability	9
Online Resources	10
2. Getting Started	
Starting Notes	11
Assembly	12
Inserting Batteries	37
Pre-Ride Safety Checks	38
3. Making Moves	
Using the Seatbelt	39
Riding	40
Activating the Lights	41
Using the Bell	42
Helmet Safety	43
Care & Maintenance	44

Safety Warnings

- Before use, please read the user manual and safety warnings carefully, and make sure you understand and accept all the safety instructions. The user will be responsible for any loss or damage caused by improper use.
- Before each cycle of operation, the operator shall perform the preoperation checks specified by the manufacturer: That all guards and pads originally supplied by the manufacturer are in proper place and in serviceable condition; That the braking system is functioning properly; That any and all axle guards, chain guards, or other covers or guards supplied by the manufacturer are in place and in serviceable condition; That tires are in good condition, inflated properly, and have sufficient tread remaining; The area that the product is to be operated should be safe and suitable for safe operation.
- Components shall be maintained and repaired in accordance with the manufacturer's specifications and using only the manufacturer's authorized replacement parts with installation performed by dealers or other skilled persons.
- Warning against recharging non-rechargeable batteries.
- Don't allow hands, feet, hair, body parts, clothing, or similar articles to come in contact with moving parts, wheels, or drive train, while the motor is running.
- This product should not be used by children or persons with reduced physical, sensory or mental capabilities, or lack of experience and knowledge, unless they have been given supervision or instruction (IEC 60335-1/A2:2006).
- Unsupervised children should not play with the product (IEC 60335-1/A2:2006).
- Adult supervision is required.
- The rider should not exceed 55 lb.
- Units shall not be operated to perform racing, stunt riding, or other maneuvers, which may cause loss of control, or may cause uncontrolled operator/passenger actions or reactions.
- Never use near motor vehicles.
- Avoid sharp bumps, drainage grates, and sudden surface changes. Ride-on may suddenly stop.
- Avoid streets and surfaces with water, sand, gravel, dirt, leaves, and other debris. Wet weather impairs traction, braking, and visibility.
- Avoid riding around flammable gas, steam, liquid, or dust that could cause fire.
- Operators shall adhere to all of the manufacturer's recommendations and instructions, as well as comply with all laws and ordinances:
- Units without headlights shall be operated only with adequate daylight conditions of visibility, and; Owners shall be encouraged to highlight (for conspicuity) using lighting, reflectors, and for low-riding units, signal flags on flexible poles.
- Persons with the following conditions shall be cautioned not to operate: Those with heart conditions; Pregnant women; Persons with head, back, or neck ailments, or prior surgeries to those areas of the body; and persons with any mental or physical conditions that may make them susceptible to injury or impair their physical dexterity or mental capabilities to recognize, understand, and perform all of the safety instructions and to be able to assume the hazards inherent in unit use.
- Do not ride at night.
- Do not ride after drinking or taking prescription medication.
- Do not carry items when riding.
- Never operate the product barefooted.
- Always wear shoes and keep shoelaces tied.
- Make sure your feet are always placed securely on the deck.
- Operators always shall use appropriate protective clothing, including but not limited to a helmet, with appropriate certification, and any other equipment recommended by the manufacturer: Always wear protective equipment such as helmet, knee pads, and elbow pads.
- Always give way to pedestrians.
- Be alert to things in front and far away from you.
- Do not allow distractions when riding, such as answering the phone or engaging in any other activities.
- The product cannot be ridden by more than one person.
- When you ride the product along with other riders, always keep a safe distance to avoid a collision.
- This vehicle does not have brakes or braking capability. Do not leave a child unattended during operation. Do not use in a location that may require braking capability, as this could result in loss of control, which may result in serious injury or death.
- Replace worn or broken parts immediately.
- Check whether all safety labels are in place and understood before riding.

- The owner shall allow the use and operation of the unit after a demonstration that such operators can understand and operate all components of the unit before use.
- Do not ride without proper training. Do not ride at high speeds, on uneven terrain, or on slopes. Do not perform stunts or turn abruptly.
- Prolonged exposure to UV rays, rain and the elements may damage the enclosure materials, store indoors when not in use.

MODIFICATIONS

Do not attempt to disassemble, modify, repair, or replace the unit or any components of the unit without instruction from the Jetson Customer Care. This will void any warranty, and can lead to malfunctions which may cause injury.

ADDITIONAL OPERATION CAUTIONS

Do not lift the product off the ground while it is on and the wheels are in motion. This can result in freely spinning wheels, which may cause injury to yourself or others nearby. Do not jump on or off the product, and do not jump while using it. Always keep your feet firmly planted on the foot rest while in operation. Always check the battery charge before using.

NOTICE OF COMPLIANCE

This device complies with Part 15 of the FCC Rules. Operation is subject to the following two conditions:

(1) this device may not cause harmful interference, and (2) this device must accept any interference received, including interference that may cause undesired operation. Warning: Changes or modifications to this unit not expressly approved by the party responsible for compliance could void the user's authority to operate the equipment.

NOTE: This equipment has been tested and found to comply with the limits for a Class B digital device, pursuant to Part 15 of the FCC Rules. These limits are designed to provide reasonable protection against harmful interference in a residential installation. This equipment generates, uses and can radiate radio frequency energy and, if not installed and used in accordance with the instructions, may cause harmful interference to radio communications. However, there is no guarantee that interference will not occur in a particular installation. If this equipment does cause harmful interference to radio or television reception, which can be determined by turning the equipment off and on, the user is encouraged to try to correct the interference by one or more of the following measures:

- Reorient or relocate the receiving antenna.
- Increase the separation between the equipment and receiver.
- Connect the equipment into an outlet on a circuit different from that to which the receiver is connected.
- Consult the dealer or an experienced radio/TV technician for help.

Shielded cables must be used with this unit to ensure compliance with the Class B FCC limits.

DISPOSAL OF USED BATTERY



Battery may contain hazardous substances which could endanger the environment and human health. This symbol marked on the battery and/or packaging indicates that used battery shall not be treated as municipal waste. Batteries should be disposed of at an appropriate collection point for recycling. By ensuring the used batteries are disposed of correctly, you will help preventing potential negative consequences for the environment and human health. The recycling of materials will help to conserve natural resources. For more information about recycling of used batteries, please contact your local municipality waste disposal service.

California Proposition 65



WARNING:

This product can expose you to chemicals including Chromium (hexavalent compounds), which is known to the State of California to cause cancer and birth defects or other reproductive harm. For more information go to: www.P65Warnings.ca.gov.

Warranty Coverage

GENERAL LIMITED WARRANTY

Your new Jetson product is warranted against defects in materials and workmanship as indicated on ridejetson.com/warranty for a period of time from the date of original retail purchase when used in accordance with Jetson's user manuals (refer to ridejetson.com/support). **Under this warranty, you will be able to direct your claims to Jetson even in situations where you purchased the Jetson Product from one of our authorized retailers.** To read the full terms of our warranty, visit ridejetson.com/warranty.

1. About Your Product

1.1 What's in the Box

A. FRONT FRAME PIECE

A1. LIGHTING POWER BUTTON

A2. LIGHTING MODE BUTTON

A3. LED LIGHTS

B. REAR FRAME PIECE

C. FRONT WHEEL

D. PEDAL SUPPORT (X2; LEFT AND RIGHT)

E. PEDAL (X2)

F. FRONT FORK

G. FENDER

H. FRONT BASKET

I. HANDLEBAR

I1. HANDGRIP (X2; LEFT AND RIGHT)

I2. SAFETY PADDING

I3. BELL

J. REAR WHEEL WITH CAP (X2)

K. REAR BASKET

K1. HANDLE

L. SEAT

L1. CARRYING HANDLE

L2. SEATBELT

HARDWARE AND TOOLS:



KNOB (X3)



SMALL BOLT (X2)



MEDIUM BOLT



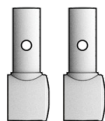
WASHER (X2)



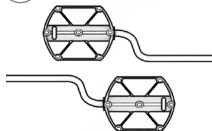
REAR AXLE (X2)



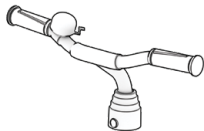
PHILLIPS-HEAD SCREWDRIVER

A**B****C****D**

(X2)

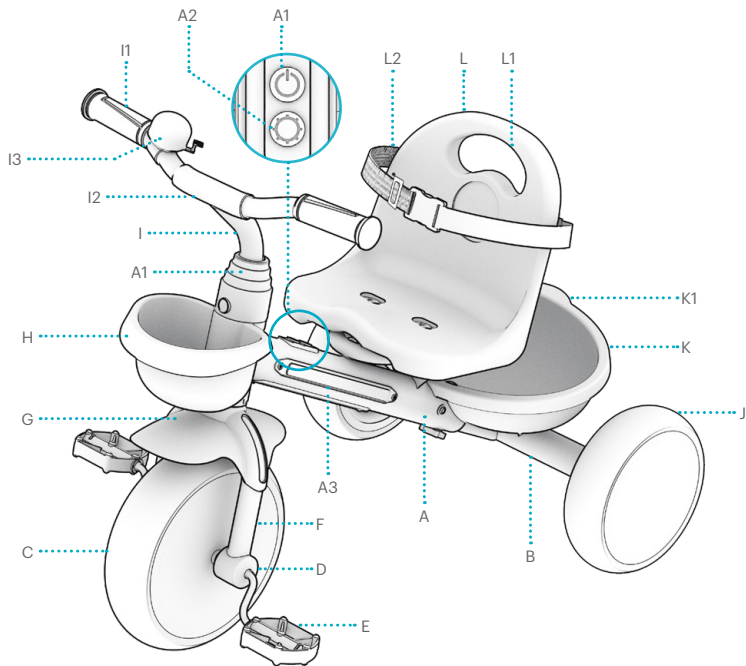
E

(X2)

F**G****H****I****J**

(X2)

K**L**

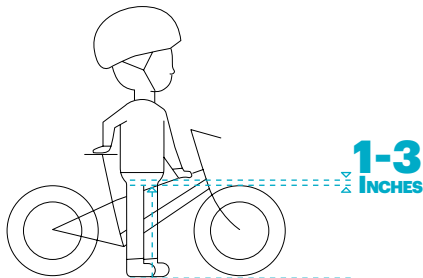


NOTE: IMAGES MAY NOT REFLECT EXACT APPEARANCE OF ACTUAL PRODUCT.

1.2 Specs & Features

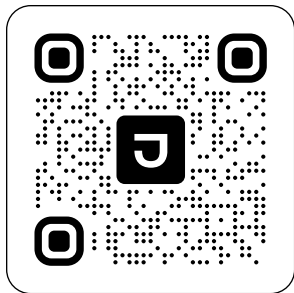
- **PRODUCT DIMENSIONS:** 26.2" (L) X 17.7" (W) X 23.2" (H)
- **HANDLEBAR HEIGHT:** 23.2"
- **SEAT HEIGHT:** 12.0"
- **PRODUCT WEIGHT:** 9.7 LB
- **WHEEL SIZE:** FRONT WHEEL 10"; REAR WHEELS 8"
- **WEIGHT LIMIT:** 55 LB
- **RECOMMENDED RIDER AGE:** 2 - 4
- **FRAME LIGHT BATTERIES REQUIRED:** 3 AA (NOT INCLUDED)

1.3 Rider Suitability



FOR SAFE AND COMFORTABLE RIDING THERE SHOULD BE A CLEARANCE OF AT LEAST 1 – 3 IN BETWEEN THE CROTCH AND THE TOP TUBE OF THE TRIKE FRAME, WHILE THE RIDER STRADDLES THE TRIKE WITH BOTH FEET FLAT ON THE GROUND.

1.4 Online Resources



**Scan for our most
updated trike
onboarding materials
and support resources.**

2. Getting Started

2.1 Starting Notes

- REMOVE ALL PACKAGING BEFORE BEGINNING ASSEMBLY.
- THE DIRECTIONS GIVEN IN THIS MANUAL—RIGHT, LEFT, FRONT/FORWARD, AND REAR/BACK—ARE ORIENTED AS THE RIDER WOULD SEE THEM WHEN SITTING ON THE TRIKE. THE "RIGHT SIDE" OF THE TRIKE, FOR EXAMPLE, IS THE SIDE WHERE THE RIDER'S RIGHT HAND AND FOOT WILL BE.
- YOU MAY WANT AN EXTRA SET OF HANDS TO HELP WITH ASSEMBLY. GRAB AN ASSISTANT!

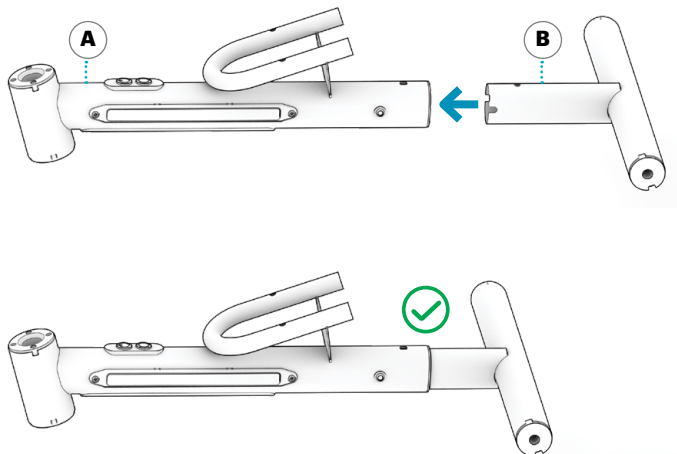
WARNING:

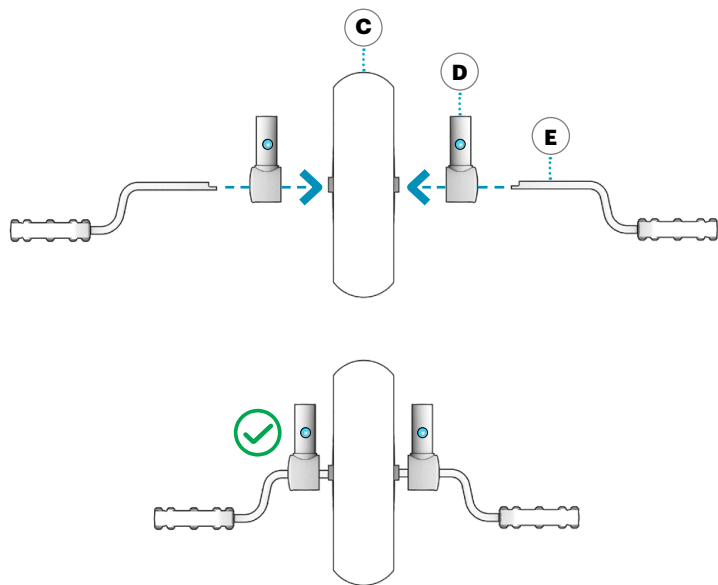
FAILURE TO COMPLY WITH THE FOLLOWING INSTRUCTIONS MAY RESULT IN INJURY TO THE CHILD OR OTHERS.

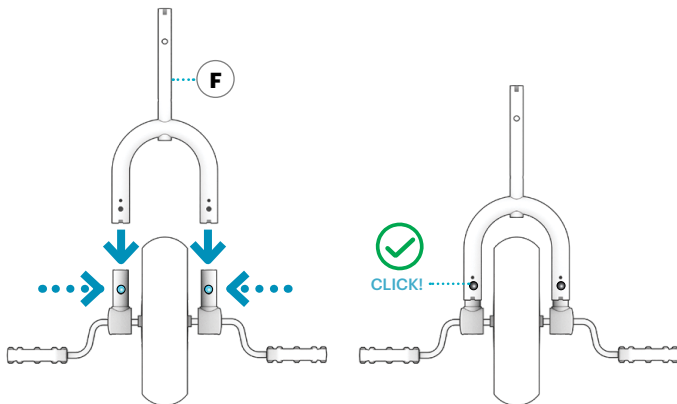
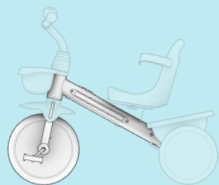
- KEEP SMALL PARTS AWAY FROM CHILDREN DURING ASSEMBLY.
- ACCESSORY MUST BE ASSEMBLED AND REMOVED BY AN ADULT.
- FREQUENTLY INSPECT THE PRODUCT FOR DAMAGE.

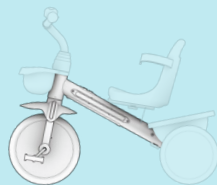
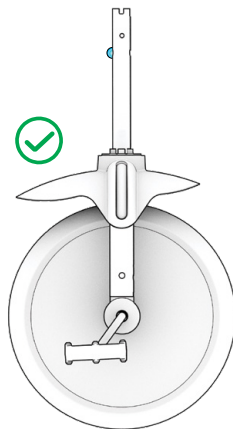
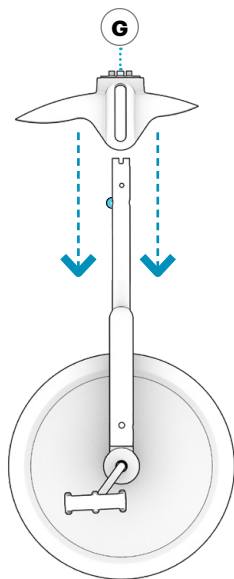
* ADULTS MUST ASSIST CHILDREN IN THE ASSEMBLY AND INITIAL ADJUSTMENT PROCEDURES OF THE PRODUCT.

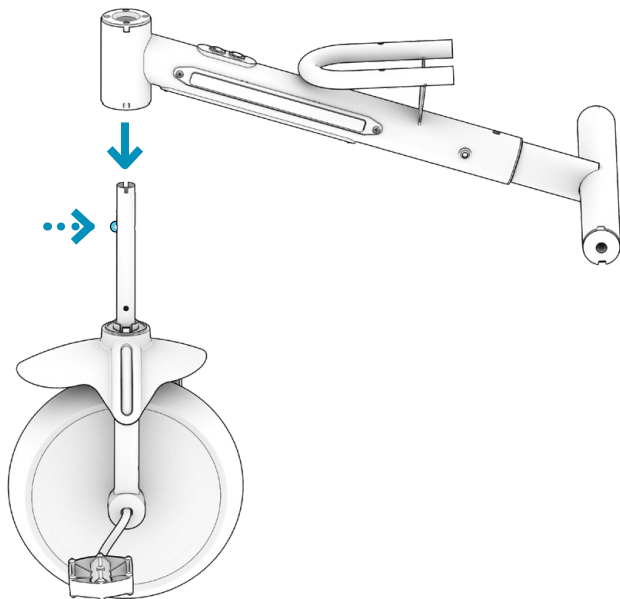
2.2 Assembly

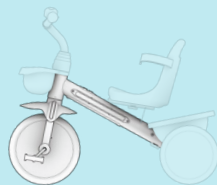
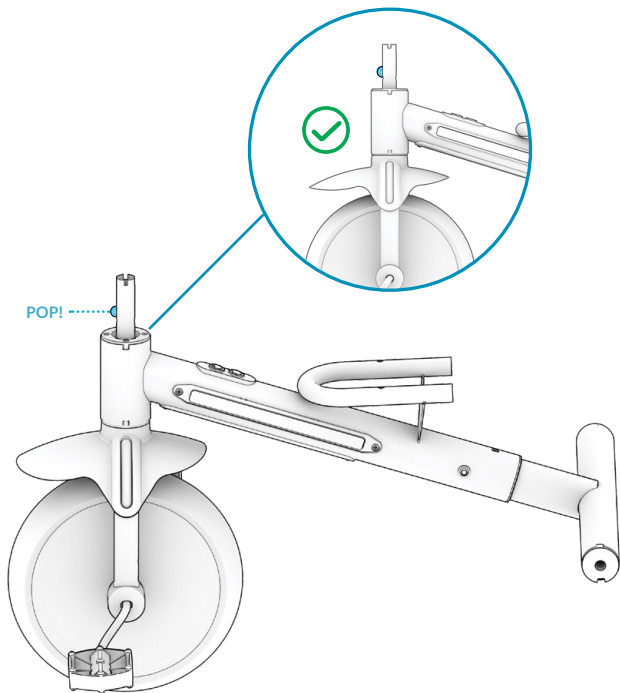


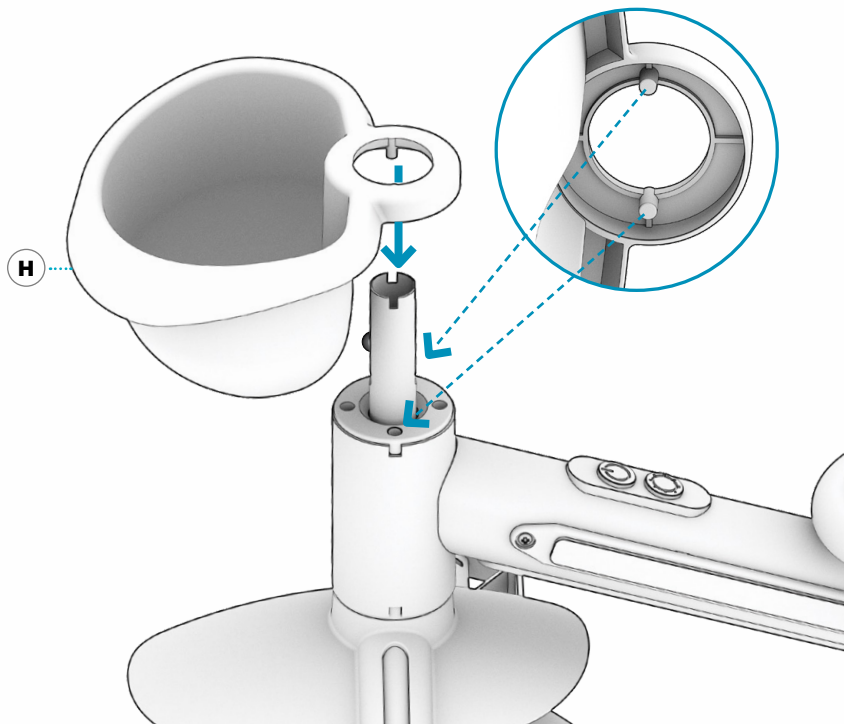


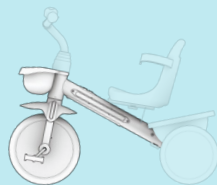
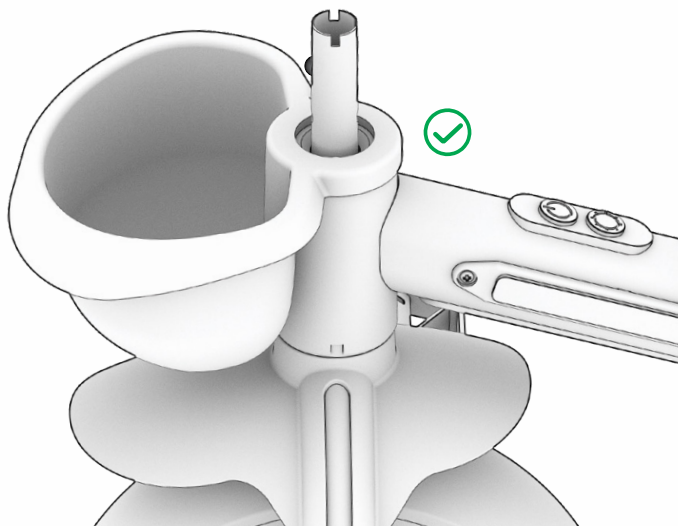


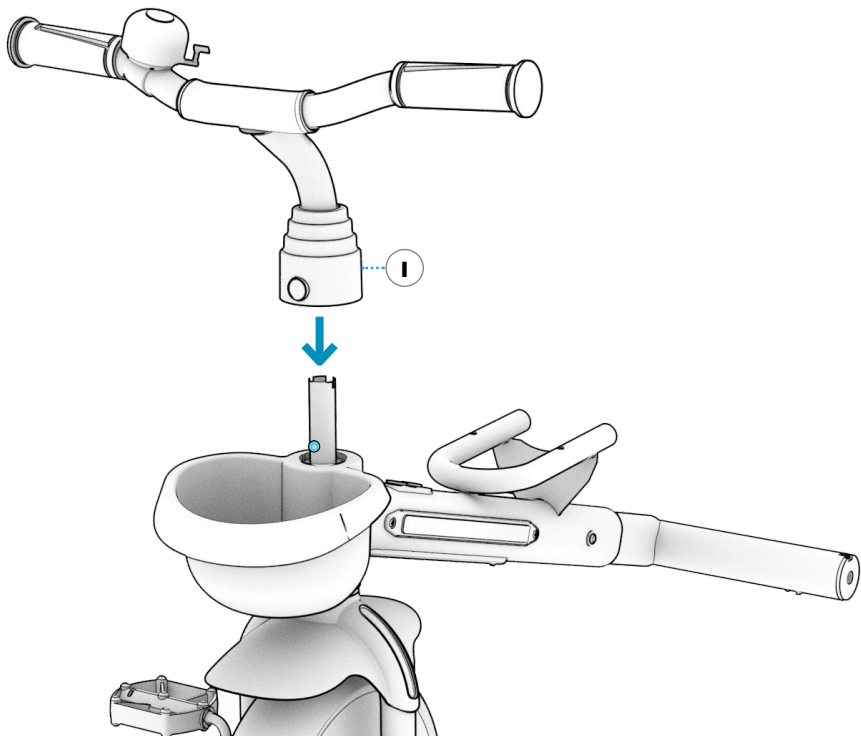


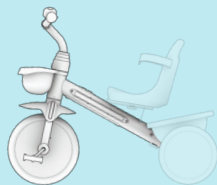
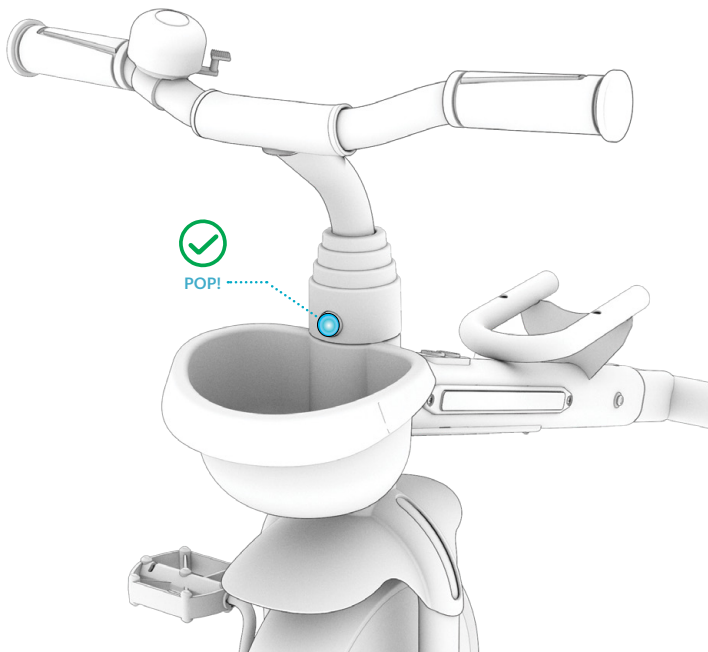


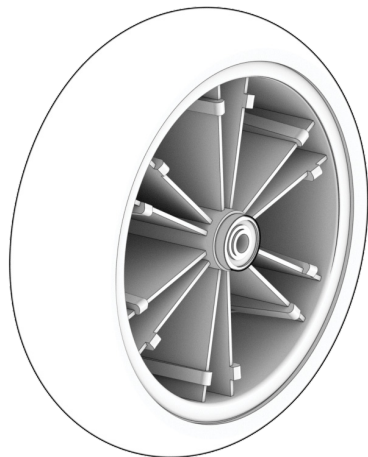
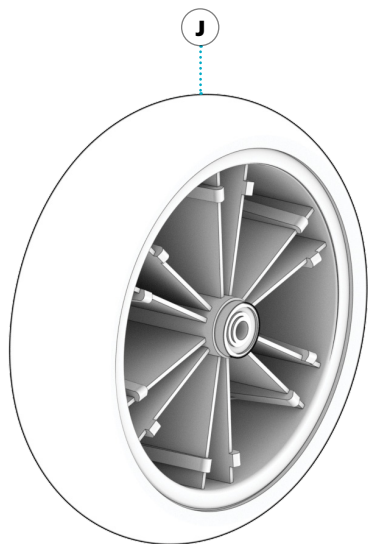


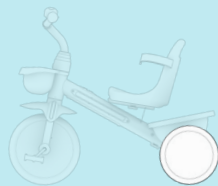
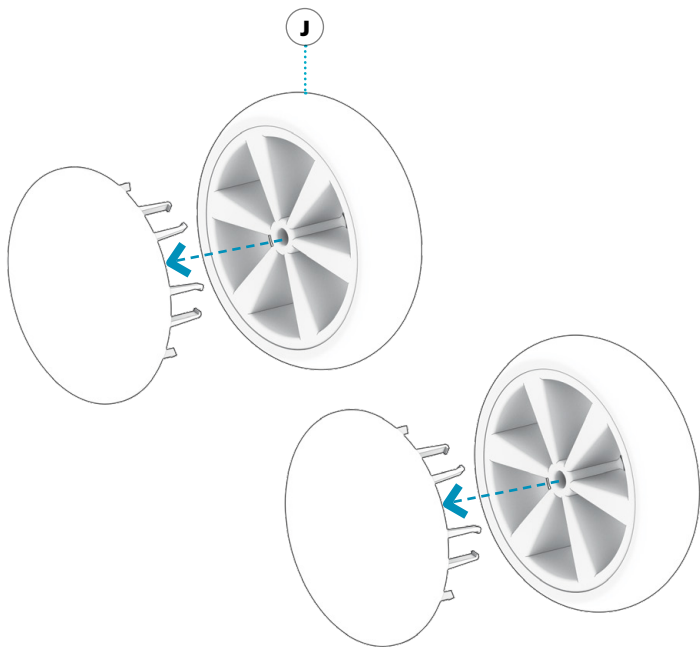


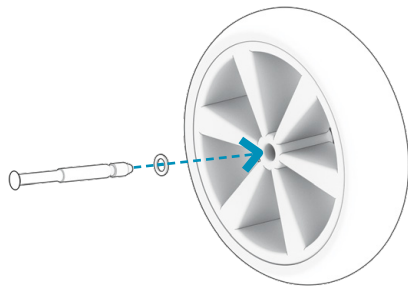
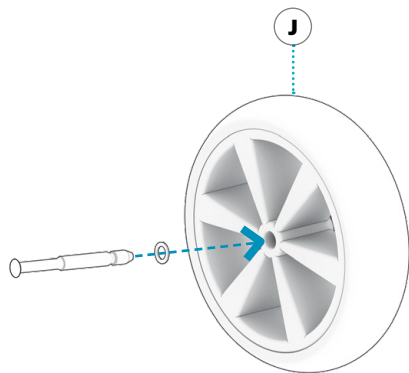


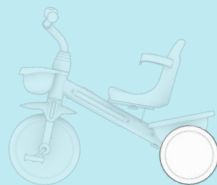
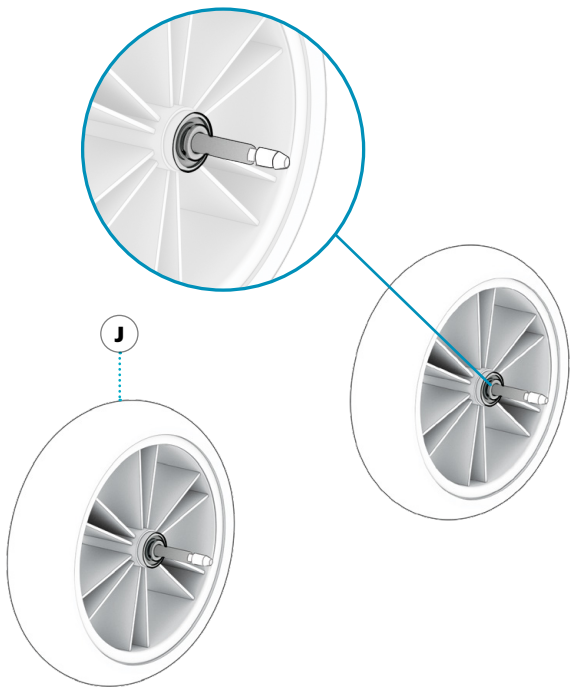


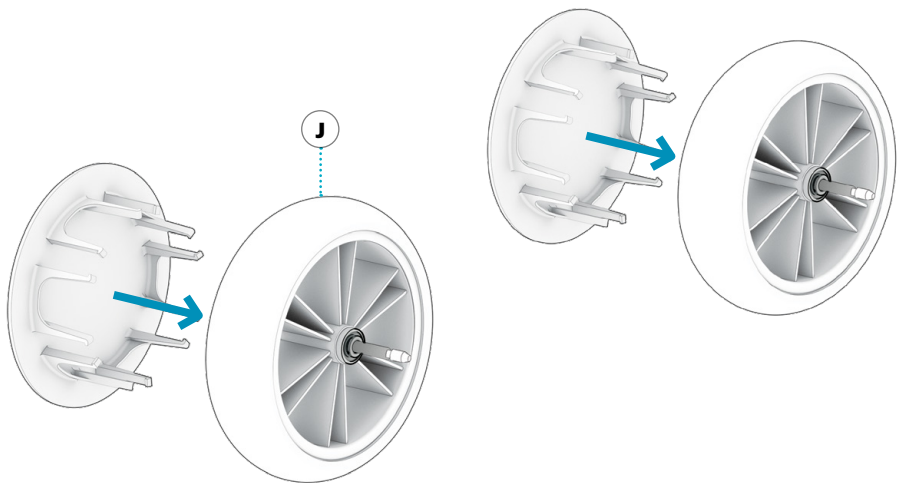






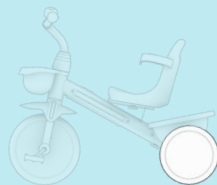
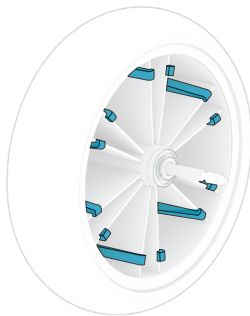
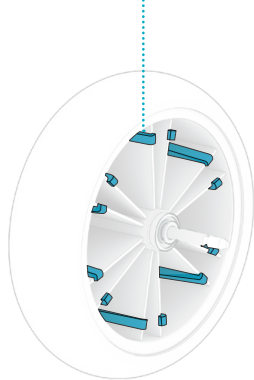


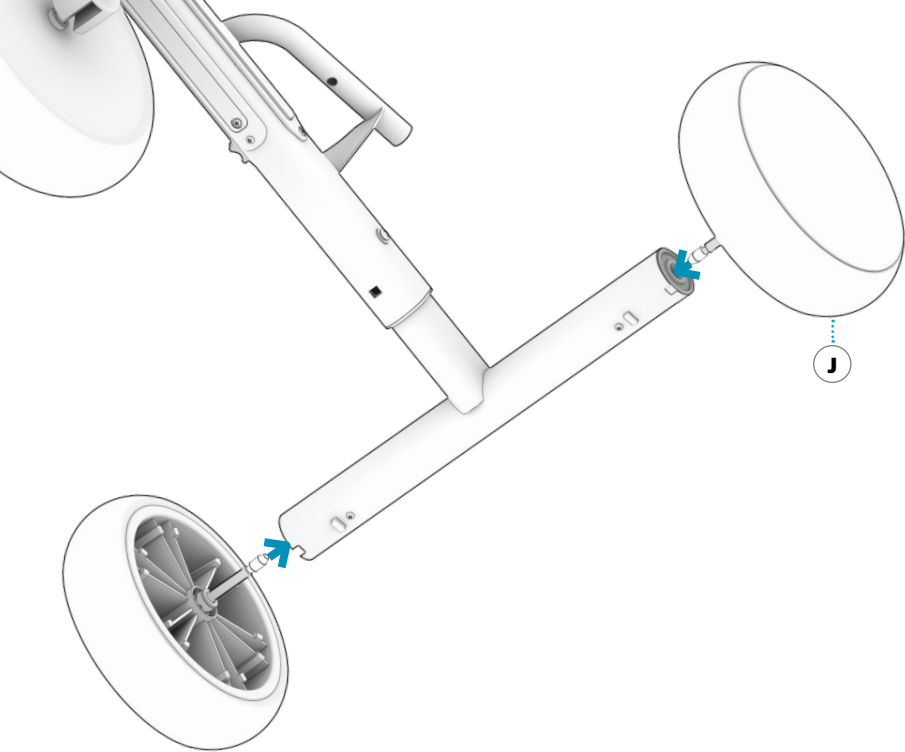


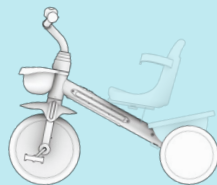
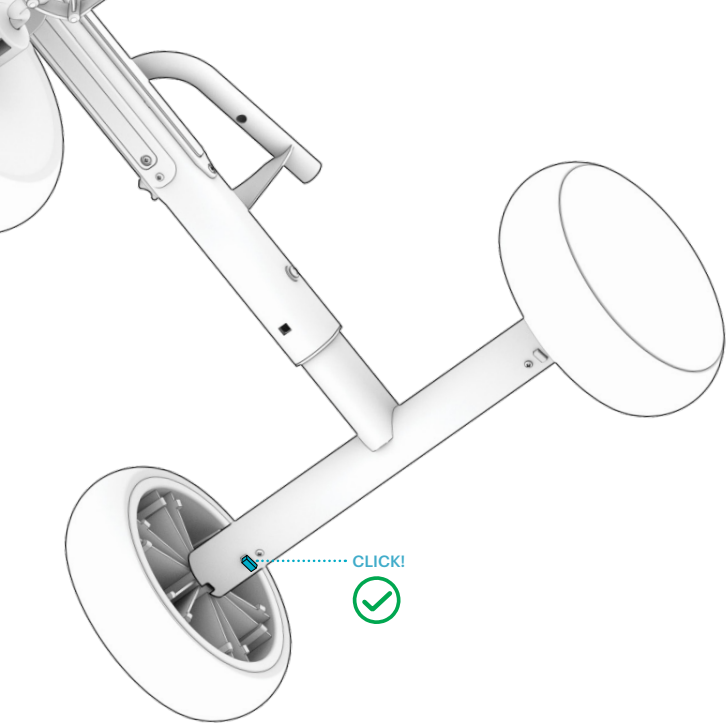


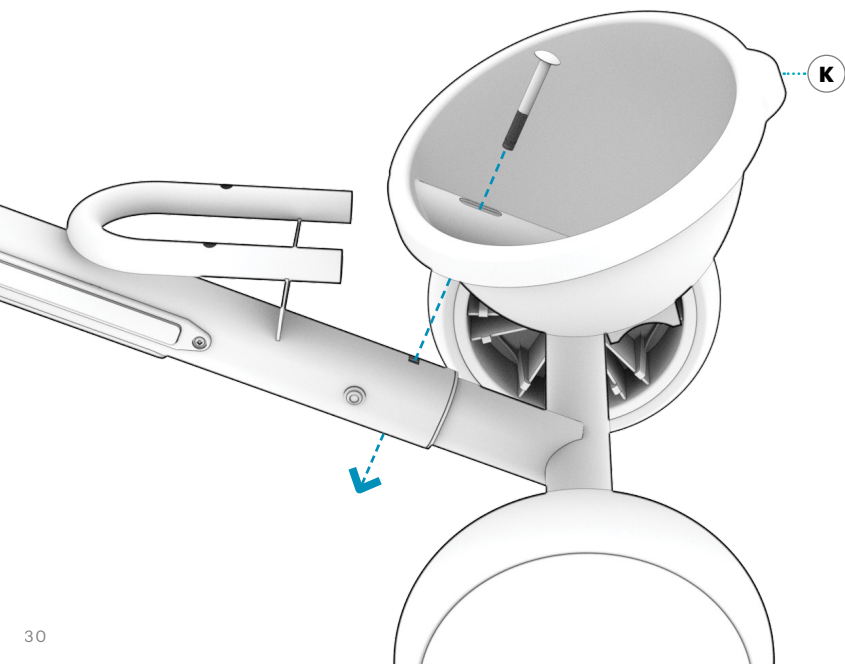


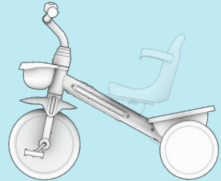
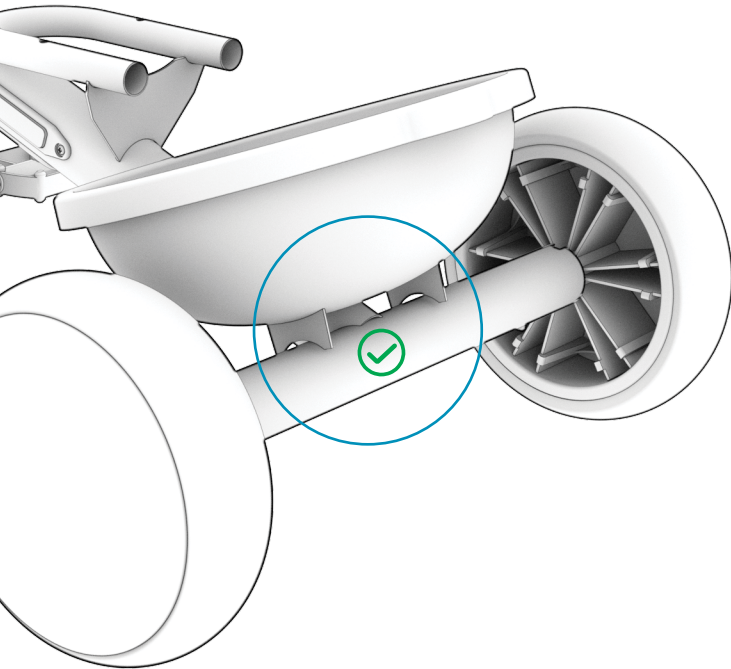
CLICK!

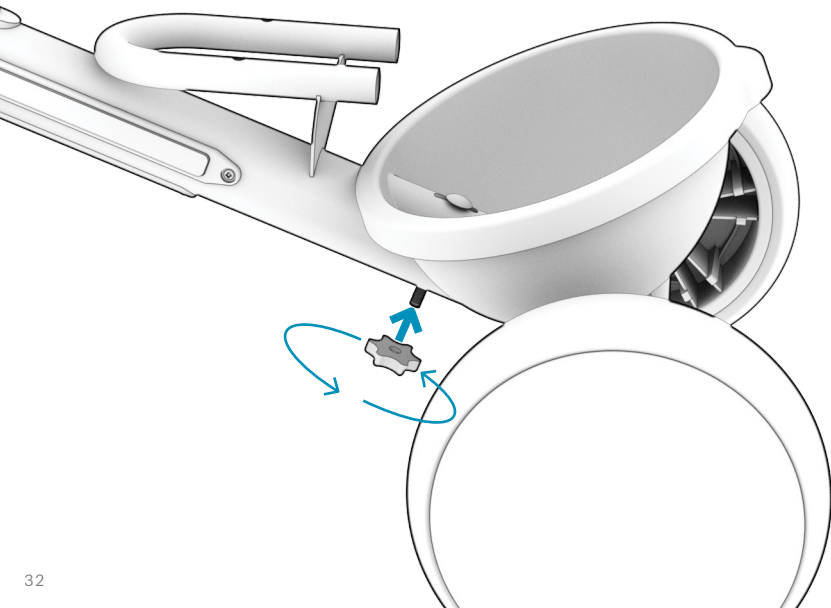


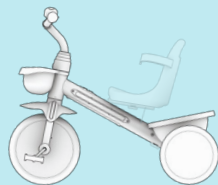
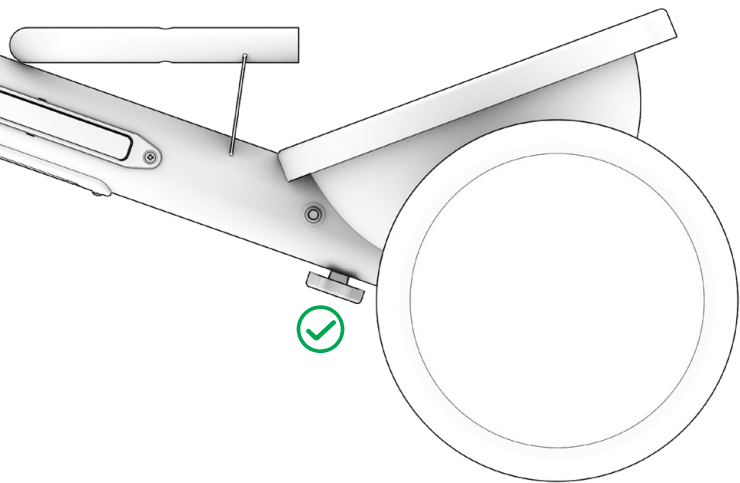


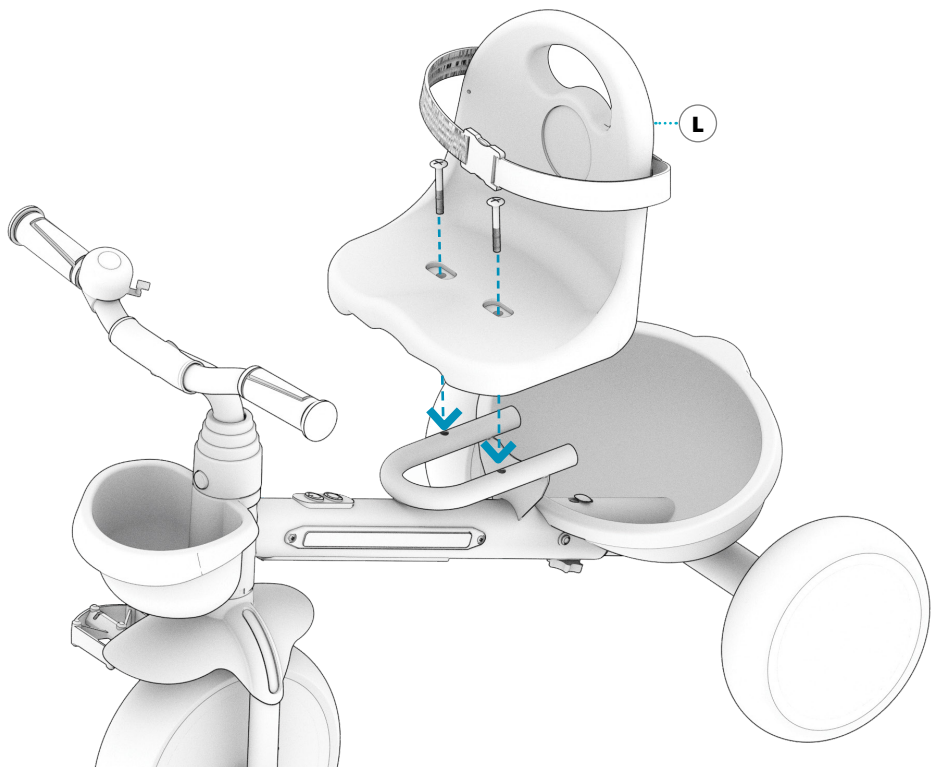


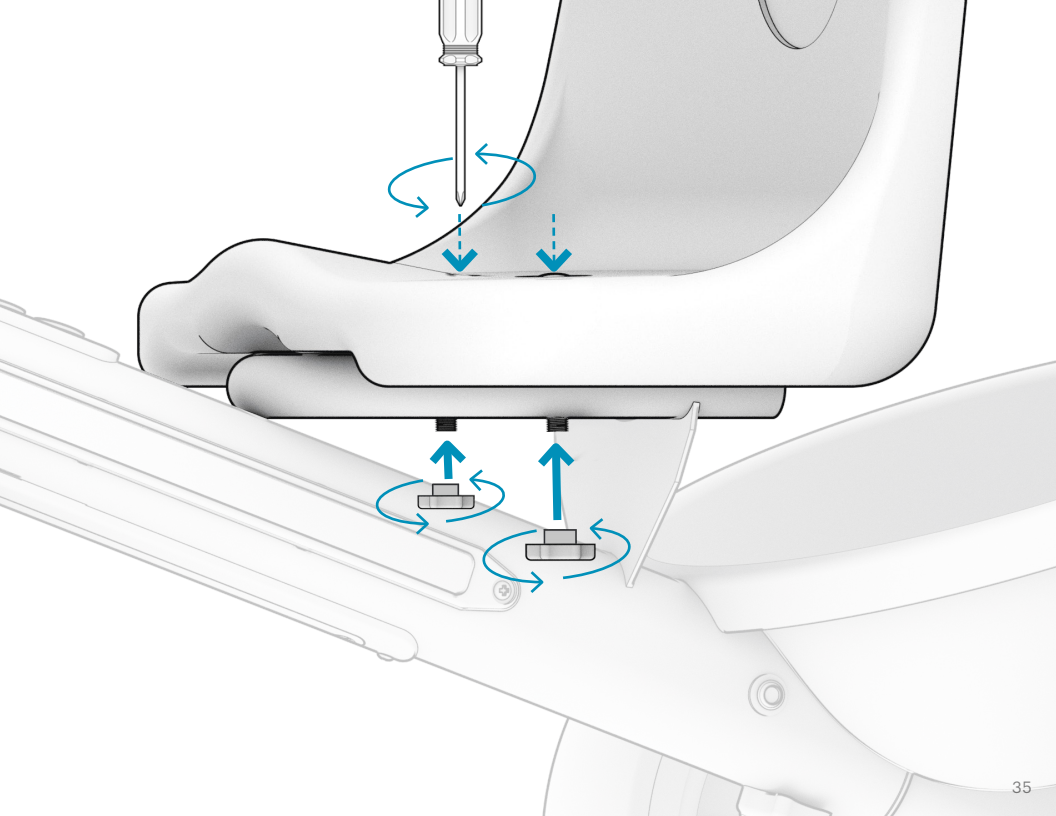


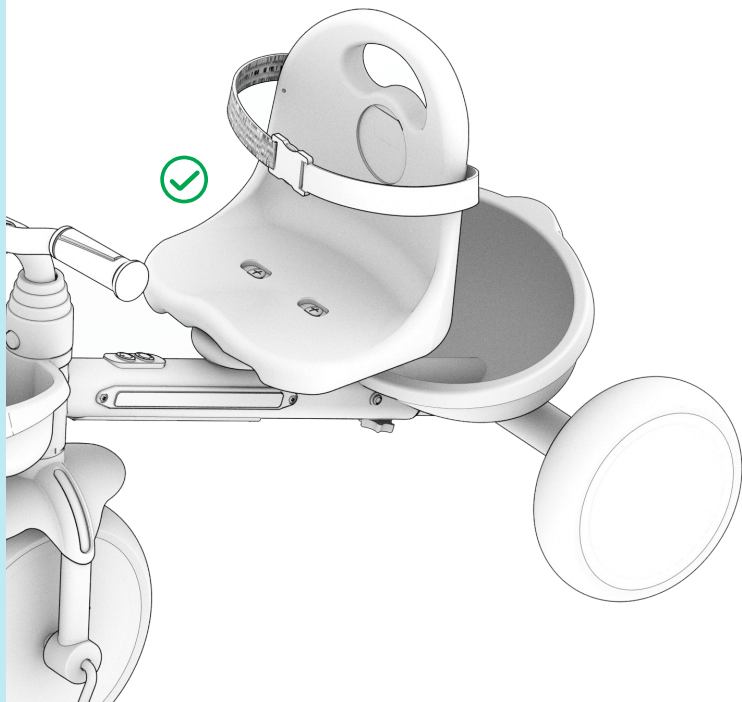
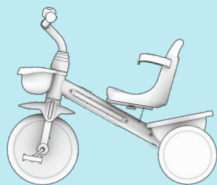


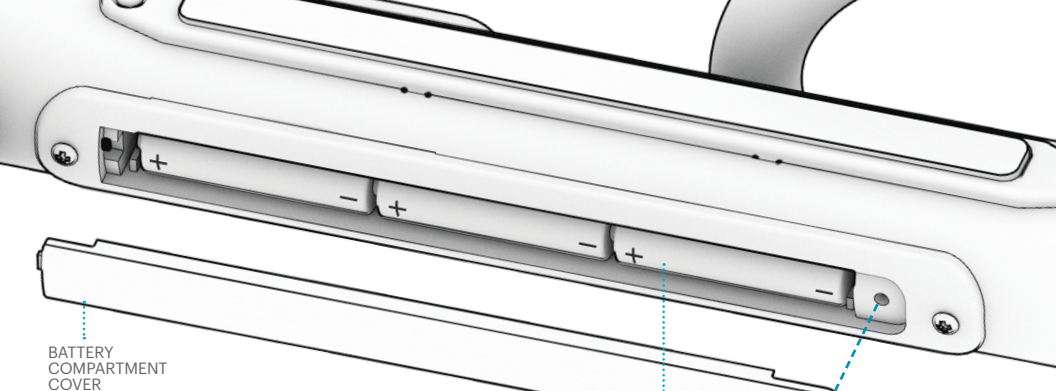












2.3 Inserting Batteries

YOU WILL NEED 3 AA BATTERIES (NOT INCLUDED) TO ACTIVATE THE LIGHTS ON THE TRIKE.

1. USE THE SCREWDRIVER TO LOOSEN AND REMOVE THE PRE-INSTALLED SCREW ON THE BATTERY COMPARTMENT BY TURNING IT COUNTERCLOCKWISE.
2. REMOVE THE BATTERY COMPARTMENT COVER.
3. PLACE 3 AA BATTERIES INSIDE BASED ON THE +/- DIRECTIONS INDICATED ON THE INSIDE OF THE COMPARTMENT.
4. REPLACE THE BATTERY COMPARTMENT COVER.
5. REINSERT THE SCREW THROUGH THE ALIGNED HOLES IN THE BATTERY COMPARTMENT COVER AND BATTERY COMPARTMENT. TIGHTEN THE SCREW BY TURNING IT CLOCKWISE WITH THE SCREWDRIVER.

AA BATTERY

BATTERY
COMPARTMENT
SCREW

PHILLIPS-HEAD SCREWDRIVER



2.4 Pre-Ride Safety Checks

CONDUCT THESE IMPORTANT SAFETY CHECKS BEFORE EVERY RIDE.

STEERING

- CHECK THAT THE HANDLEBAR IS SECURELY TIGHTENED TO THE FRAME.
- CHECK THAT THE HANDLEBAR AND FRONT WHEEL ROTATE SIMULTANEOUSLY.

PEDALS

- CHECK THAT THE PEDALS ARE SECURELY TIGHTENED TO THE INSIDE OF THE FRONT WHEEL.
- CHECK THAT THE PEDALS ROTATE FREELY.

WHEELS

- CHECK WHEELS FOR EXCESSIVE WEAR OR ANY DAMAGE.
- CHECK THAT THE WHEELS ARE SECURED TO THE FRAME.

SEAT BELT

- CHECK THAT THE SEAT BELT IS SECURELY ATTACHED TO THE SEAT.
- CHECK THAT THE SEATBELT IS NOT FRAYED OR DAMAGED.
- CHECK THAT THE SEATBELT CAN BE MADE SNUG AROUND THE LAP OF THE RIDER.

BASKETS

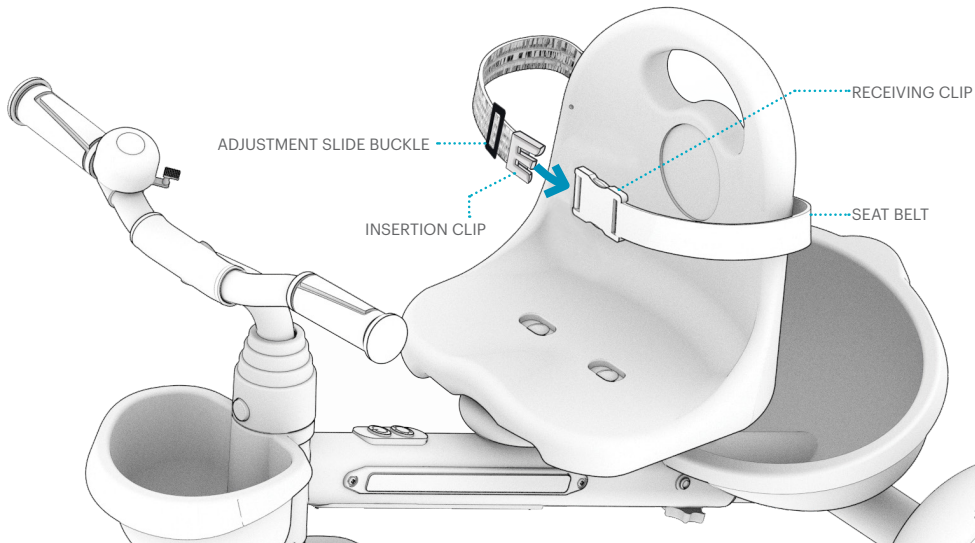
- CHECK THAT THE CARRYING CONTENTS IN EACH BASKET DO NOT EXCEED 1 POUND.
- CHECK THAT CONTENTS ARE CONTAINED AND NOT HANGING OVER THE EDGE OF THE BASKET SUCH THAT THEY ARE IN THE WAY OF THE WHEELS OR PEDALS.

3. Making Moves

IMPORTANT: DO NOT OVERLOAD THE BASKETS WITH CARGO! LIMIT CONTENTS IN EACH BASKET TO 1 POUND TOTAL WEIGHT.

3.1 Using the Seatbelt

POSITION BOTH STRAPS OF THE SEATBELT OVER THE LAP OF THE RIDER. CLICK THE INSERTION CLIP INTO THE RECEIVING CLIP. CHECK THAT THE BELT IS SECURE AND SNUG OVER THE RIDER'S LAP. IF NECESSARY, SHORTEN OR LENGTHEN THE BELT BY MOVING THE ADJUSTMENT SLIDE BUCKLE ALONG THE STRAP.

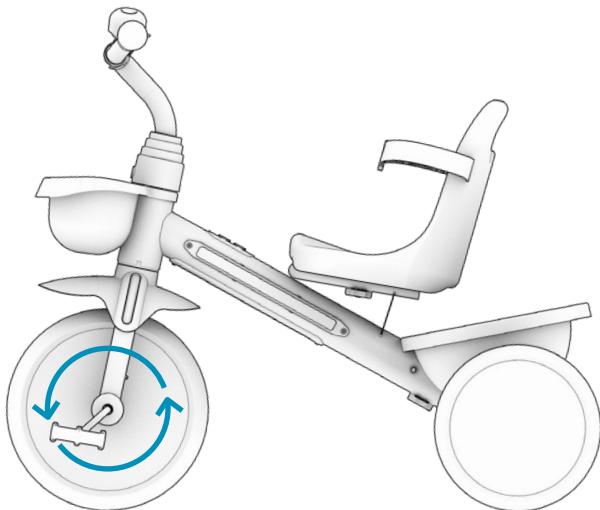


3.2 Riding

PUSH THE PEDALS IN FORWARD ROTATION TO MOVE FORWARD. PUSH THE PEDALS IN BACKWARD ROTATION TO MOVE BACK.

STOP PEDALING TO SLOW DOWN OR STOP.

ROTATE THE HANDLEBAR LEFT OR RIGHT TO TURN.



3.3 Activating the Lights

YOU CAN LIGHT UP YOUR RIDE WITH 8 DIFFERENT LIGHTING PATTERNS.

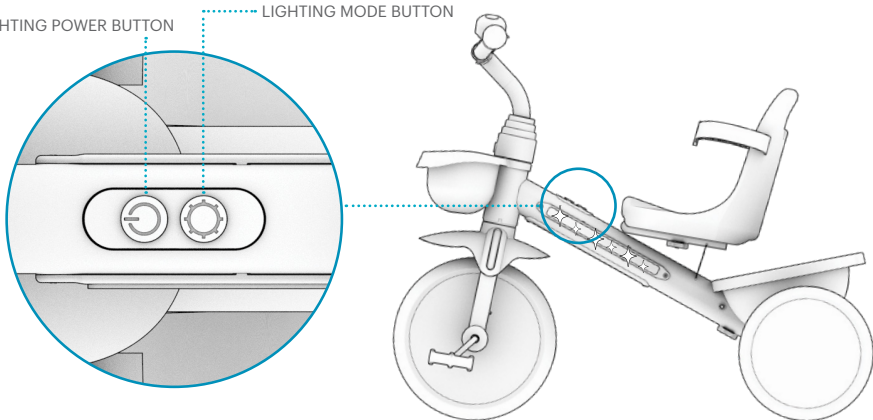
TO TURN THE LIGHTS ON OR OFF: QUICK-PRESS THE LIGHTING POWER BUTTON.

TO CHANGE TO ANOTHER LIGHTING PATTERN: QUICK PRESS THE LIGHTING MODE BUTTON TO CYCLE THROUGH THE COLORS.

IMPORTANT: TO PRESERVE BATTERY POWER, ALWAYS REMEMBER TO TURN YOUR LIGHTS OFF AFTER A RIDE.

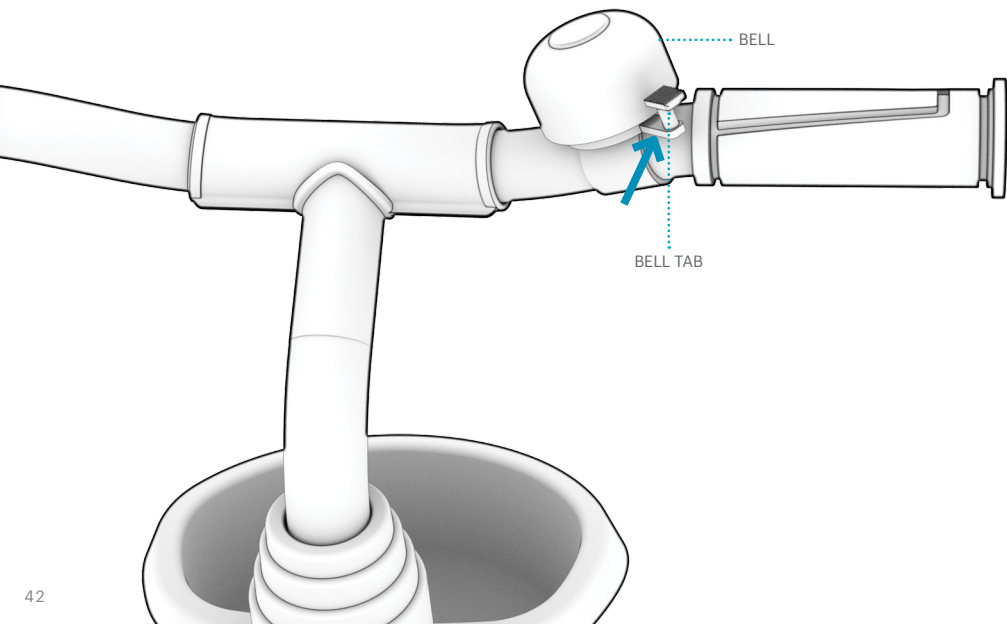
LIGHTING POWER BUTTON

LIGHTING MODE BUTTON



3.4 Using the Bell

TO SOUND THE BELL, PUSH THE BELL TAB FORWARD.



3.5 Helmet Safety

A HELMET SHOULD BE WORN BY THE RIDER AT ALL TIMES.



PROPER POSITIONING:
THE FOREHEAD IS COVERED
BY THE HELMET.



IMPROPER POSITIONING:
THE FOREHEAD IS EXPOSED.
A FALL COULD RESULT IN SERIOUS INJURY.

* WEAR A HELMET, APPROPRIATE CLOTHING, SHOES, AND SAFETY GEAR. AVOID CLOTHING THAT CAN GET CAUGHT INTO OR UNDER THE WHEELS. CLOSED-TOE, FLAT SHOES ARE RECOMMENDED. WEAR AN ASTM F1492 APPROVED HELMET AND PROTECTIVE GEAR TO PREVENT INJURY IN THE EVENT OF AN ACCIDENT.

Care & Maintenance

CLEANING THE TRIKE

- TO CLEAN THE TRIKE, CAREFULLY WIPE WITH A DAMP CLOTH AND THEN DRY WITH A DRY CLOTH.
- DO NOT APPLY WATER DIRECTLY TO THE TRIKE. WATER CAN CAUSE DAMAGE TO THE ELECTRICAL SYSTEM OR TO THE FRAME DETERIORATION, WHICH COULD LEAD TO A MALFUNCTION THAT PUTS RIDER SAFETY AT RISK.

PRECAUTIONS

- KEEP AWAY FROM FIRE AND EXCESSIVE HEAT.
- AVOID INTENSE PHYSICAL IMPACT AND/OR SEVERE VIBRATION.
- RIDE THE TRIKE ON A SMOOTH, FLAT SURFACE.
- PROTECT FROM WATER OR MOISTURE.
- CONTACT THE JETSON CARE TEAM IF THERE ARE ANY ISSUES WITH THE TRIKE.

STORING THE TRIKE

- STORE THE TRIKE INDOORS AND IN A DRY PLACE.
- COVER THE TRIKE TO PROTECT IT AGAINST DUST.
- REMOVE BATTERIES PRIOR TO STORING THE TRIKE FOR EXTENDED PERIODS OF TIME.

Stay connected.

Be sure to follow **@ridejetson**
on social media to learn about fantastic offers,
giveaways, and all the latest Jetson news.



Loving your ride?

Then be sure to leave a review at ridejetson.com/reviews.
We can't wait to hear from you!

JETSON

#MakeMoves

Questions? Let us help.

ridejetson.com/support
ridejetson.com/chat

To exercise your product's warranty
or inquire about warranty
coverage, contact us directly.

1-888-976-9904

Manufactured in Zhejiang, China
Imported by Jetson Electric Bikes LLC.
P.O. Box 320149, 775 4th Ave #2,
Brooklyn, NY 11232

www.ridejetson.com



Made in China
Date Code: 01/2024
Document Edition: v2.0

© 2024, JETSON. ALL RIGHTS RESERVED. Manufactured by JETSON ELECTRIC BIKES LLC.
No portion of this document, including shape, copy, graphics, and design,
may be reproduced or transmitted in any form or by any means.