

NAUTILUS IW60A ON DEMAND WATER HEATER

RVMEGA
YOUR ONE STOP RV SHOP

 **Suburban**

A Division of AIRXCEL

Feels like home!

Enjoy endless hot water with Suburban's **NAUTILUS** On Demand RV Water Heater. Say "good-bye" to waiting for water to reheat in a conventional tank. Showers and baths are best enjoyed slowly, so LIVE FREE from the restraints of limited hot water supplies. Dishes and even the laundry can be done with an infinite supply of hot water whenever and wherever, simultaneously from every fixture.

EASILY REPLACES ANY 22.7, 37.8, 45.4, 60.6 LITRE PORCELAIN TANK OR ALUMINIUM MODELS!



PERFORMANCE SPECS	
MODEL	Nautilus IW60A, 5187A
MAXIMUM MJ/hr	64 (5) burners
TWO-STAGE Self Modulating Combustion System	YES Stage 1 Operation: 2 Burners Stage 2 Operation: 5 Burners
Fuel Source	Universal LP Gas
Dry Weight	15 Kg with vent assembly Optional access panel 2.3 Kg shipping weight
12 VDC = AMPS	2.1 AMPS
Operational Voltage Range	10.2 - 14.5 VDC
MAXIMUM Output Water Temperature	50°C
Output Water Temperature - Factory Setting	50°C
Digital Control Center Temperature Range	35° - 50° (C)
Liters Per Minute (LPM) Required Flow	1.9 LPM
Freeze Protection	Standard
Warranty	2 year
Product Dimensions	W316.6 x H317.8 x D464.9mm (includes inlet & discharge water lines)

0800 278 479 | retail@RVMEGA.co.nz | 101 Hewletts Rd, Mount Maunganui

www.RVMEGA.co.nz

OPERATION DETAILS

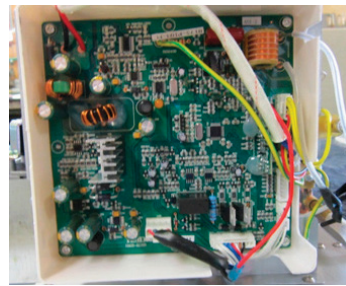
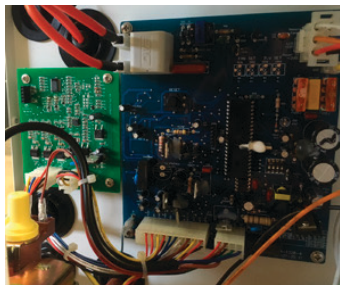
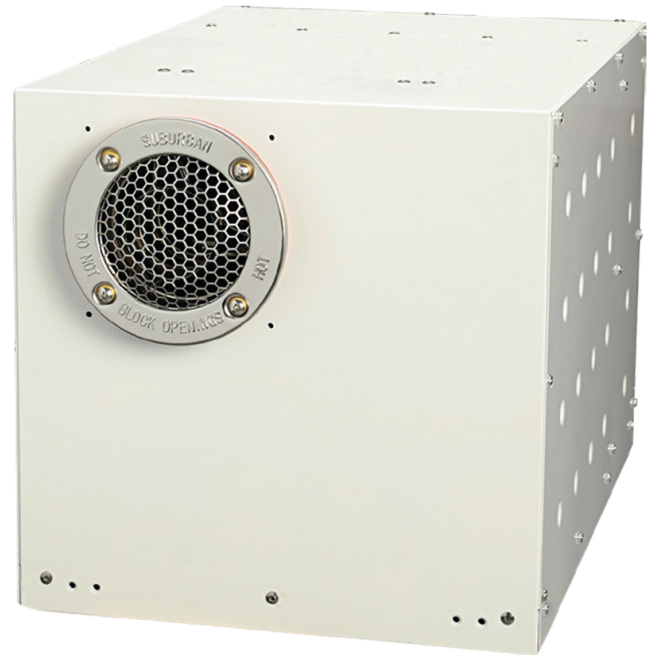
A Suburban replacement panel and vent cap are required when replacing Suburban 22.7, 37.8, 45.4, 60.6 Litre tank units.

When replacing an Atwood 22.7 or 37.8 Litre unit, an Atwood replacement panel kit and vent cap are required.

P.C. Board monitors:

- Inlet Water Flow
- Inlet Water Temperature
- Outlet Water Temperature
- Combustion Air Fan Speed
- Heat Exchanger and Burner Operation

The 2-Stage self modulating combustion system will regulate the gas flow and burners to achieve 15.8 to 64 MJ. This allows the system to adequately control output temperature during both low and high demand conditions.



MODULE BOARD and BLOWER CONTROL MODULE BOARD

5 BURNER MANIFOLD

CONTROL MODULE

3 BURNER MANIFOLD

WATER TEMPERATURE HEAT GAIN from INCOMING WATER TEMPERATURE			
INPUT WATER TEMP	LPM	OUTPUT WATER TEMP	GAIN
10°C	5.7	48°C	38°C
	7.6	38°C	28°C
	11.4	29°C	19°C
15°C	5.7	48°C	33°C
	7.6	43°C	28°C
	11.4	35°C	20°C
21°C	5.7	50°C	29°C
	7.6	49°C	28°C
	11.4	39°C	18°C