

RightRamp

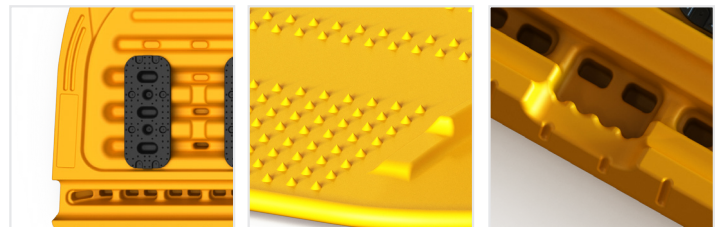
Description:

Designed in conjunction with the University of East Anglia, led by Dr Katherine Deane BSc PhD - Senior Lecturer in Research, and her team.

A uniquely designed ramp focused for people of varying abilities to overcome the issues that all current wheelchair ramps have. Extremely stable when in use, with excellent grip on its surface in all conditions. A consistent ramp angle allows multiple angle entry/exit.

Features:

- Designed to lay on the road to increase strength and reduce flex.
- Works to Kerb heights of 75 mm - 125 mm.
- Consistent ramp gradient.
- Efficient anti-slip pattern.
- Low-rise tapping rails on each side for the visually impaired.
- Cable & rain water run off channel underneath.
- No high-rise edges that cause a trip hazard.
- Handle for ergonomic ease of lifting.
- Able to withstand over 350 kg.
- Single man lift at 13.20 kg.
- Company identification can be embossed.
- Product is 100% recyclable.



PVC Anchors

Anti-Slip

Handle

Standards:

- Designed to **National Grid T/SP/E/42**
- Designed to **HAUC Advice Note No. 2018/01**
- The Red Book 2013
- Conforms to slip resistance of **BS 7976: Part 2**

Width:	1199 mm
Height:	123 mm
Depth:	766 mm
Weight:	13.20 kg

*All weights are approximate



The information given on these sheets is typical of the product depicted it must not be interpreted as a guarantee of individual product performance and/or characteristics. We reserve the right to alter specifications and designs without prior notice. All measurements are in millimetres (mm)



FM 673547