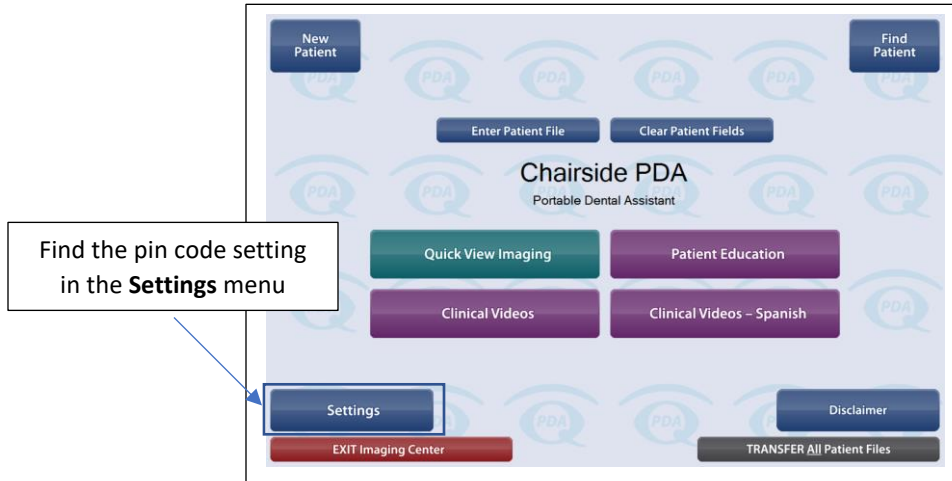


New Feature

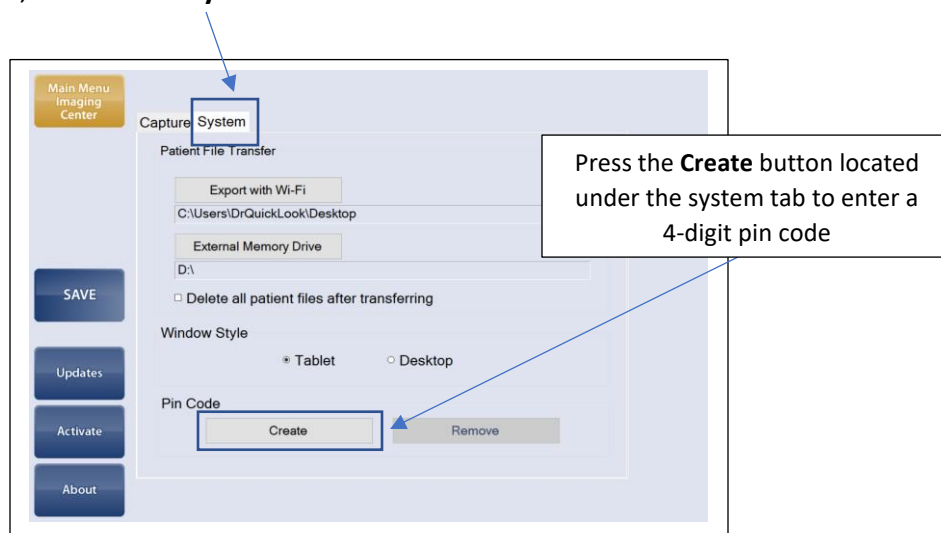
Pin Code Protect Patient Files

You now have the option to protect patient files and settings preferences with a 4-digit pin code. Please see below for instructions.

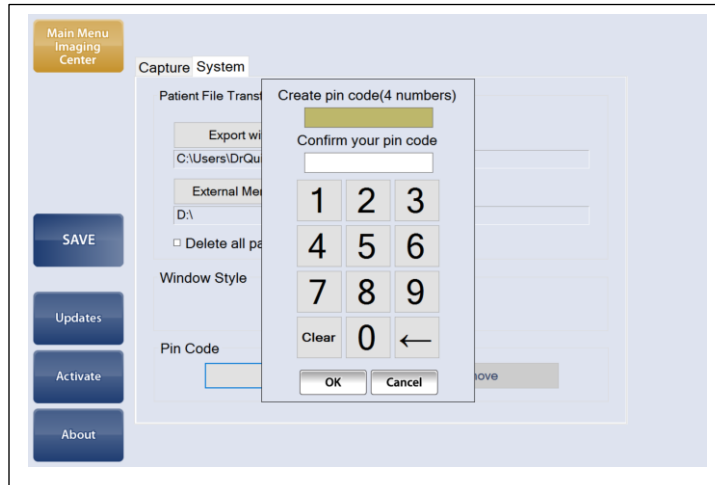
From the Main Menu, choose **Settings**, located in the bottom left corner of the screen.



Under the settings menu, choose the **System** tab. Choose the Create button at the bottom of the screen.



A pin code text box will appear. Create and confirm pin code and press, **OK**.



This code will be needed to access patient files, the settings menu or to transfer all patient files.

Important notes about this feature:

1. Creating a pin code is optional and can be created at any time.
2. A pin code can be changed or removed completely at any time by accessing the system tab in **Settings**. Be aware that that once created, the pin code is needed to access the **Settings** menu.
3. Be creative when setting the pin code but make sure that it is memorable. If you forget the pin code, a reset is available by calling customer service at: 1-888-346-6153. Customer service can be reached Monday through Friday, 9 AM to 5 PM (Eastern).