

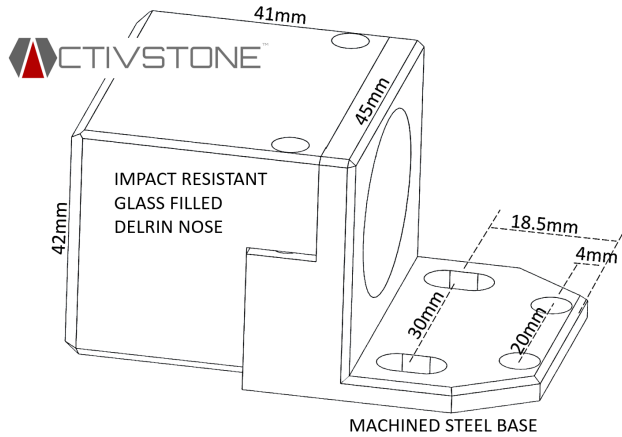
LONG RANGE CUBE MOUNT  
FOR 30MM CYLINDRICAL SENSORS

WMT-3040-FNXH



FOR SENSOR SIZE  
**30MM**

MATERIALS  
**STEEL & GLASS FILLED DELRIN**



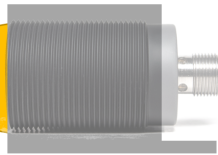
**HIGH DURABILITY 40mm CUBE REPLACEMENT**  
BOLT-IN DIRECT INTERCHANGE TO MOST EXISTING CUBE SENSORS

- Machined steel back mount section
- ACTIVSTONE Weld spatter resistant coating.
- Inductively Transparent Glass-filled Delrin Nose
- Allows for sensor adjustability and replacement
- Resistant to Impact, Abrasion and Heat
- Direct mounting interchange to existing 40mm CUBE sensors with provision for 4 mounting points
- Secure clamping mechanism as found on WMT mount systems
- Up to 20mm Range shielded with Weld Dynamix 30mm Sensor
- Up to 40mm Range un-shielded with Weld Dynamix 30mm Sensor

INSTALLATION GUIDELINES

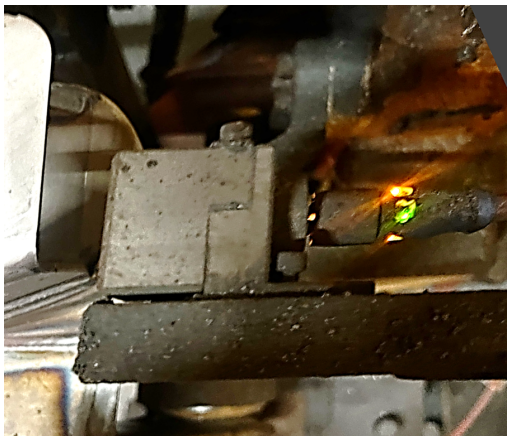
SHIELDED

SHIELDED  
SENSING  
PATTERN



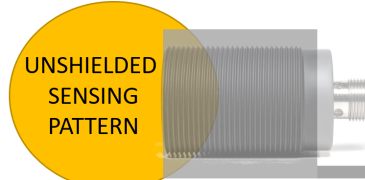
METAL BACKGROUND

NOTE – WITH SHIELDED SENSORS, THERE ARE NO LIMITATIONS ON PLACEMENT OF MOUNT ONTO METALIC BACKGROUND



UNSHIELDED

UNSHIELDED  
SENSING  
PATTERN



METAL  
FREE  
AREA

METAL BACKGROUND

NOTE – WITH UNSHIELDED SENSORS, AN AREA WITHIN THE SENSING PATTERN MUST BE KEPT FREE OF METAL

