



INSTRUCTIONS MANUAL

TYL-DYUV50B

INDOOR

INSECT ZAPPER

Attract and kill bugs on contact



www.tylrhome.com

TABLE OF CONTENTS

IMPORTANT SAFEGUARDS.....	2
PARTS AND FEATURES.....	5
BEFORE FIRST USE.....	6
USING THE INSECT ZAPPER.....	6
REPLACING THE UV LAMP.....	9
OTHER IMPORTANT NOTES.....	10
CLEANING AND MAINTENANCE.....	12
WARRANTY TERMS AND CONDITIONS.....	13

IMPORTANT SAFEGUARDS

When using this appliance, basic safety precautions should always be followed, including the following:

1. Read all instructions.
2. Make sure that your outlet voltage corresponds to the voltage stated on the rating label of the coffee maker.
3. This appliance is for indoor use only.
4. To protect against fire, electric shock and injury to persons do not immerse cord, plug, in water or other liquid.
5. Close supervision is necessary when any appliance is used by or near children.
6. Hang and mount the appliance in a place where children can't reach.
7. Do not touch the grills or insert a metal object while the appliance is in use to prevent an electric shock.
8. The appliance is not to be used in locations where there are flammable vapors or explosive dust.
9. Unplug from outlet when not in use and before cleaning.
10. Insects accumulating in the collection tray of the unit may contribute to fire. Clean dead insects from unit frequently as noted in this manual.
11. Unplug the appliance before cleaning, use a suitable brush.

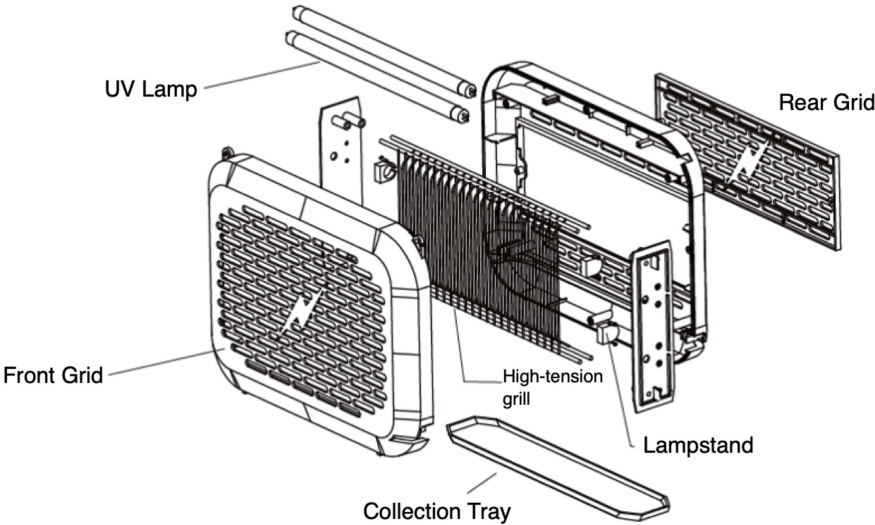
12. Do not clean this appliance with a water spray or similar method.
13. Do not operate any appliance with a damaged cord or plug or after the appliance malfunctions, or has been damaged in any manner.
14. If the supply cord is damaged, it must be replaced by the manufacturer or its service agent or a similarly qualified person in order to avoid a hazard.
15. Do not use appliance for other than intended use.
16. Lamps are replaceable by user. See replacement bulb information located in this manual.
17. This appliance is not intended for use by persons (including children) with reduced physical, sensory or mental capabilities, or lack of experience and knowledge, unless they have been given supervision or instruction concerning use of the appliances by a person responsible for their safety.
18. Children should be supervised to ensure that they do not play with the appliance.
19. This appliance is intended to be used in household and similar applications such as:
 - staff kitchen areas in shops, offices and other working environments;
 - farm houses;
 - by clients in hotels, motels and other residential type environments;

- bed and breakfast type environments.

20. Save these instructions.

**SAVE THESE INSTRUCTIONS.
FOR HOUSEHOLD USE ONLY.**

PARTS AND FEATURES



Hanging Chain



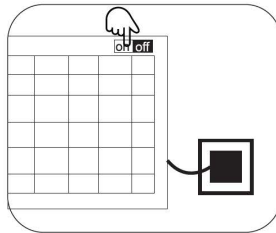
Cleaning Brush

BEFORE FIRST USE

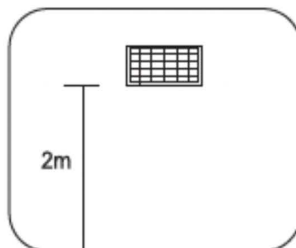
Check that all accessories are complete, and the unit is not damaged. Check the power cord for damage. If there is damage, please bring to the nearest authorized service center. Check that the UV lamps are not damaged and are in properly in place.

USING THE INSECT ZAPPER

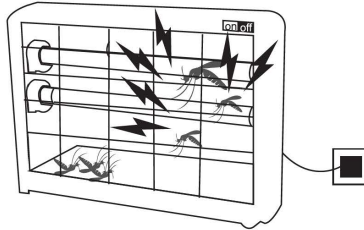
Plug the unit to a power supply and switch the ON/OFF button to ON.



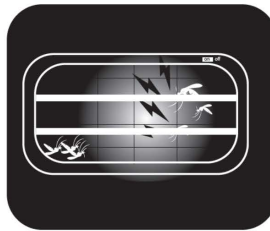
When possible, place the unit 2 meters above ground, and in an empty room, as this improves its effectivity.



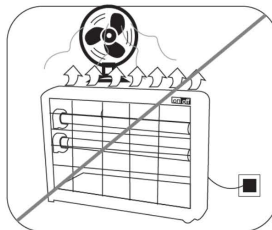
When an insect touches the high-tension grill, there will be a crackling sound. This is normal.



When possible, switch off the lights as this makes the insect zapper more efficient.



Refrain from placing the insect zapper in front of an electric fan or where there is a strong air current.



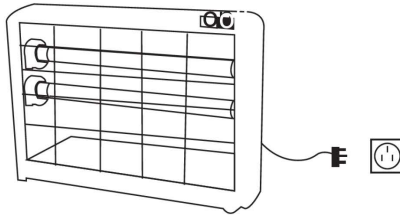
Using the Hanging Chain

1. Attach the ends of the chain to the hooks on both sides of the zapper.
2. Determine the spot for hanging. Hammer a nail or screw in , or attach a hook on the wall.
3. Hang the chain on the nail/screw/hook. Adjust to make sure the insect zapper is hung properly.

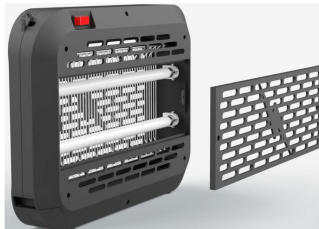


REPLACING THE UV LAMP

1. Before replacing the UV lamp, switch off the unit and unplug from the wall socket.



2. Remove the rear grid.

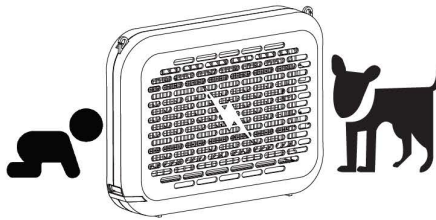


3. Gently rotate the UV lamp until its prongs align with the notch on the lamp holder socket, then gently pull out the UV Lamp to remove.
4. Gently align the prongs on the new UV lamp with the notch on the lamp holder socket, then gently push in the UV lamp. Rotate the UV lamp until it locks into place.

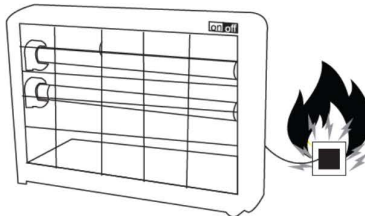
5. Replace the rear grill and plug the insect zapper into the wall socket. You may now switch on the unit and continue using it.

OTHER IMPORTANT NOTES

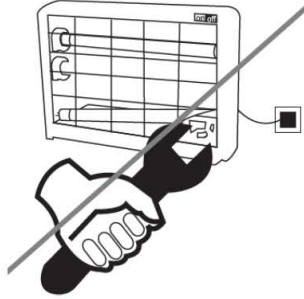
This appliance is equipped with a front and rear safety grid to prevent children and pets from accidental touch of the high-tension grill.



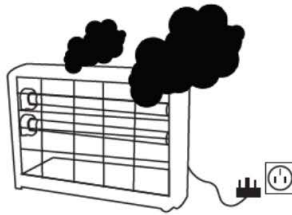
CAUTION: *To avoid electric shock, product damage, or fire please use the appliance at the indicated voltage.*



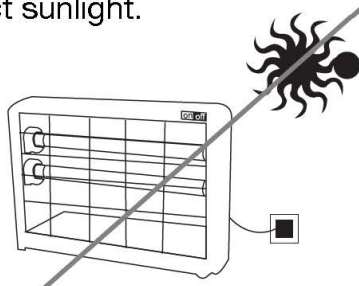
In case the unit malfunctions, do not attempt to repair it by yourself. Bring the unit to the nearest authorized service center for repair.



If there is smoke, sparks, abnormal sounds, or strange smells coming from the unit, unplug it immediately and bring it to the nearest authorized service center.



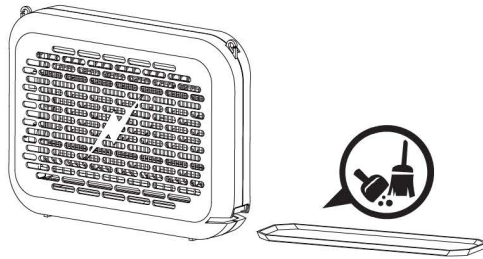
Do not use the insect zapper where there are flammable fumes, or place under direct sunlight.



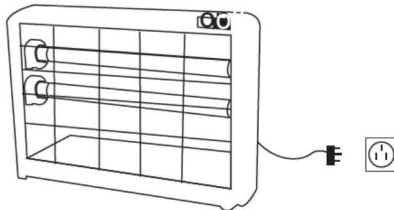
CLEANING AND MAINTENANCE

CAUTION: *Be sure to unplug the unit before cleaning. To protect against electrical shock, do not immerse cord, plug or unit in water or liquid.*

1. Over time, the grill may accumulate dead insects, which may affect the function of the insect zapper. To ensure effective use of the insect zapper, periodic cleaning of the grill with a soft brush may be necessary.
2. Insects accumulated in the collection tray may contribute to fire. To prevent this, regularly empty and clean the collection tray.



3. Unplug the insect zapper when not in use.



WARRANTY TERMS AND CONDITIONS

ONE-YEAR LIMITED WARRANTY ON PARTS AND LABOR

TYLR provides a warranty to the original purchaser of this product against defects in materials and workmanship for one year. If a product covered by this warranty is determined to be defective within the warranty period, **TYLR** will repair or replace the defective part with a new or remanufactured part free of charge subject to terms and conditions stated herein.

To obtain warranty service, proof of purchase in the form of a sales invoice or copy thereof is required to show that a product is within the warranty period. If any one of the documents cannot be produced, corresponding fees for labor and replacement parts will be charged.

Parts and Labor

There will be no charge for parts and labor during the warranty period. Replacement parts or units may be new or recertified and are upon **TYLR's** option and sole discretion. Replacement parts and units are warranted for the remaining portion of the original warranty. Our decision on all questions relating to complaints as a result of defects, either workmanship or materials, shall be conclusive and you shall agree to abide by such decision. Any unit or defective part that have been replaced shall become

TYLR's property. After the lapse of this warranty, a charge will be made on all labor and replacement of parts.

Types of Services

Defective Products must be sent to any **TYLR** service center to obtain warranty service. **TYLR** is neither responsible for transportation costs to the service center nor **TYLR** will cover return shipping to the customer. Product returns to **TYLR** service centers must utilize either the original carton box and shipping material or packaging that affords an equal degree of protection.

For home service, the transportation fee of **TYLR** service personnel will be charged to the customer, depending on the location. Our service personnel reserve all rights to refuse to attend to any equipment installed in an inaccessible location or any other hazardous situation.

LIMITATIONS AND EXCLUSIONS

TYLR one-year limited warranty only covers defects in materials and workmanship; however, this warranty does not cover the following:

1. Damage resulting from accidents, transport, misuse, abuse, alteration, tampering, or failure of the purchaser to follow normal operating procedures outlined in the user's manual.
2. Damage caused by negligence and poor maintenance.

3. Defects or damage due to spillage of food/liquids or improper usage of electrical supply or electrical circuit, major fluctuations in voltage, exposure to rain or moisture, wrong fuel or oil used.
4. Damage, losses, and defects as a result of fire, flood, or other Acts of God.
5. Normal wear-and-tear, corrosion, rusting, or stains.
6. Defects & damage arising from improper testing, operation, usage of the wrong component, demonstration, maintenance, installation, adjustment, or any alteration or modification of any kind.
7. Scratches & damage to the outer surface areas and externally exposed parts that are due to normal customer use.
8. General maintenance & routine servicing.
9. Claims for damaged/missing parts after 7 days from the date of purchase.
10. If any part or parts of the unit are replaced with a part or parts not supplied or approved by us, or if the unit has been dismantled or repaired by any person other than a **TYLR** authorized technician.
11. Any equipment/product which has its serial number removed or made illegible/tampered with.
12. If the warranty card is altered, defaced, or erased in any manner whatsoever.

13. If the unit is used for purposes other than household use, such as commercial use.

The one (1) year warranty covers the control PCB. However, this warranty does not cover parts (i.e., front and back grids, high-tension grill, insect collection tray, lamp sockets, UV lamp, metal chain, plastic cover, interior and exterior casing) that are subject to wear and tear, rust, stains, or corrosion.

THERE ARE NO EXPRESS WARRANTIES OTHER THAN THOSE LISTED OR DESCRIBED ABOVE. ANY IMPLIED WARRANTIES, INCLUDING ANY IMPLIED WARRANTY OF MERCHANTABILITY AND FITNESS FOR A PARTICULAR PURPOSE, SHALL BE LIMITED IN DURATION TO THE PERIOD OF TIME SET FORTH ABOVE. **TYLR'S** TOTAL LIABILITY FOR ANY AND ALL LOSSES AND DAMAGES RESULTING FROM ANY CAUSE WHATSOEVER INCLUDING **TYLR'S** NEGLIGENCE, ALLEGED DAMAGE, OR DEFECTIVE GOODS, WHETHER SUCH DEFECTS ARE DISCOVERABLE OR LATENT, SHALL IN NO EVENT EXCEED THE PURCHASE PRICE OF THE PRODUCT. **TYLR** SHALL NOT BE RESPONSIBLE FOR LOSS OF USE, COMMERCIAL LOSS, LOST REVENUE OR LOST PROFITS, OR OTHER INCIDENTAL OR CONSEQUENTIAL DAMAGES. THIS WARRANTY IS SUBJECT TO CHANGE WITHOUT NOTICE.

IMPORTANT: Please present sales invoice as proof of purchase whenever you require our service during the warranty period.

www.tylrhome.com