

**BAUMANN  
LIVING**

# popcorn maker

Deliciously hot and fresh theater-style popcorn in minutes



**BM-H1801A**

# **INSTRUCTIONS MANUAL**

[www.baumannliving.com](http://www.baumannliving.com)



## TABLE OF CONTENTS

<b>IMPORTANT SAFEGUARDS</b> .....	<b>2</b>
<b>PARTS AND FEATURES</b> .....	<b>5</b>
<b>BEFORE FIRST USE</b> .....	<b>7</b>
<b>USING YOUR POPCORN MAKER</b> .....	<b>7</b>
Servings Chart.....	12
<b>CLEANING AND MAINTENANCE</b> .....	<b>13</b>
<b>STORAGE</b> .....	<b>14</b>
<b>WARRANTY TERMS AND CONDITIONS</b> .....	<b>15</b>

## IMPORTANT SAFEGUARDS

Before using the electrical appliance, the following basic precautions should always be followed, including the following:

1. Read all instructions before operating this appliance.
2. Make sure that your outlet voltage corresponds to the voltage stated on the rating label of the popcorn maker.
3. Do not touch hot surfaces. Use handles and knobs where provided. Use hot pads or oven mitts when handling hot surfaces.
4. To protect against electrical shock do not immerse cord, plug or any part of this unit in water or other liquid.
5. Close supervision is necessary when any appliance is used by or near children.
6. Unplug from outlet when not in use and before removing parts and before cleaning.
7. If the supply cord is damaged, it must be replaced by the manufacturer, its service agent, or similarly qualified persons in order to avoid a hazard.
8. Do not let the cord hang over edge of table or counter or touch hot surface.
9. Do not place on or near a hot gas or electric burner, or in a heated oven.
10. The accessory attachments not recommended by the appliance manufacturer may cause injuries.

11. Position this unit near outlet to prevent any hazard of injury due to tripping over cord.
12. DO NOT leave kettle motor running once popping has ceased.
13. Extreme caution must be used when moving this appliance.
14. DO NOT use the appliance for other than its intended use.
15. Do not leave appliance plugged in when it is not being used.
16. Check the appliance for presence of foreign objects prior to use.
17. Always attach cord to appliance first, then plug cord into wall outlet. After popping, unplug cord from wall outlet. Let appliance cool before removing cord.
18. Children should be supervised to ensure that they do not play with the appliance.
19. The appliance is not intended to be operated by means of an external timer or separate remote-control system.
20. DO NOT use outdoors.
21. This product is intended to be used in households and similar applications such as:
  - Staff kitchen areas in shops, offices, and other working environments;
  - Farm houses;
  - By clients in hotels, motels, and similar environments;
  - Bed and breakfast type environments.

**SAVE THESE INSTRUCTIONS.  
HOUSEHOLD USE ONLY.**

## **Notes on the Cord Plug**

This appliance has a polarized plug (one blade is wider than the other). To reduce the risk of electric shock, this plug will fit in a polarized outlet only one way. If the plug does not fit fully into the outlet, reverse the plug. If it still does not fit, contact a qualified electrician. Do not modify the plug in any way.

# PARTS AND FEATURES





**Measuring Cup**

Each partition holds  
1/4 cup of kernels

**Storage Lid (attached to Bowl)**



**Cord Storage**



## BEFORE FIRST USE

Clean the lid and measuring cup with a non-abrasive sponge, towel or cloth. Turn the rotary knob counterclockwise to remove the stirring arm from the rotary knob.

Wipe stirring bar and popping plate with a non-abrasive sponge, towel or cloth. Install the stirring bar, make sure the it aligns with the rotary knob, and tighten the rotary knob clockwise to secure.

## USING YOUR POPCORN MAKER

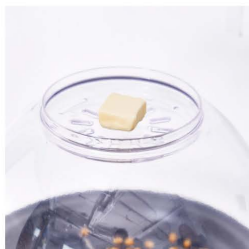
1. Place the Popcorn Maker on a flat level surface and plug it in.
2. Put recommended amount of cooking oil (e.g., vegetable oil, coconut oil, canola oil) on the popping plate (see Servings Chart on page 11). Measure popcorn kernels using the included measuring cup. Do not substitute butter, margarine, shortening, or lard for oil as these will burn or smoke excessively.



3. Add kernels to the popping plate. Place the clear bowl on the base of the Popcorn Maker. Do not attach the measuring cup to the of the bowl, as the steam vents must remain open during cooking.



4. If desired, place thin pats of butter to the bottom of the bowl (where the steam vents/butter well are located) allowing butter to melt into the popcorn as the appliance heats. For best results, use 1 tbsp butter per  $\frac{1}{4}$  cup popcorn. Softened butter will yield the best results.



5. Press the On/Off switch down to start cooking. Depending on the amount of popcorn and size of the kernels, it may take 3-4 minutes for the popcorn to begin popping.



6. When popping slows to about 2 seconds between pops, press the On/Off switch up up to turn off the appliance, then unplug the appliance.

**NOTE:** *Popcorn kernels may continue to pop after appliance is turned off. Make sure popping has stopped before flipping and removing lid.*

**NOTE:** *If butter is not completely melted, use a pastry brush to push any remaining butter through the steam vents.*



7. Attach the Measuring Cup to the top of the Bowl. It should fit securely in place.



8. Using oven mitts, hold together the bowl handle and the base handle and flip the Popcorn Maker over. You can also hold both the measuring cup and the base of the Popcorn Maker.

**CAUTION! Burn Hazard!** The popcorn popper will be VERY HOT.



9. Remove the base and serve. Be sure to open the Popcorn Maker so that the steam escapes away from you, as steam will be hot. Use oven mitts or a towel. Popcorn may be eaten directly from the lid (as serving bowl). Sprinkle salt or any other flavoring over popcorn, if desired.



**NOTE:** *Please wait approximately 10-12 minutes before using the Popcorn Maker again; otherwise, it will overheat.*

10. Cover the bowl with lid to save and store leftovers for later.



**TIP :** If kernels are not popping as much as desired, try soaking the rest of them in water for 10 minutes to add moisture. If popcorn kernels are old and completely dry, they won't pop.

## Servings Chart

<b>Amount of Popcorn Kernels</b>	<b>Amount of Oil</b>	<b>Cups of Popped Popcorn</b>	<b>Amount of Butter</b>
1/4 cup	1 tbsp	8 cups	1 tbsp
1/2 cup	2 tbsp oil	16 cups	2 tbsp
3/4 cup	3 tbsp oil	24 cups	3 tbsp

## CLEANING AND MAINTENANCE

**WARNING!** Disconnect power before cleaning. Do not immerse base or cord in any liquid.

1. Allow unit to cool completely before cleaning. Remove the stirring bar from the base by unscrewing the rotary knob. Use a damp, non-abrasive sponge or damp cloth to clean the popping plate and the stirring bar before reattaching.
2. Wash the bowl, lid and measuring cup in warm soapy water.
3. Rinse thoroughly and dry with a soft towel.

**IMPORTANT:** *DO NOT submerge the base in water or other liquid.*



## STORAGE

1. Make sure the Popcorn Maker is dry and clean before storing.
2. Wrap the power cord around the cord storage on the underside of the base.
3. Attach the measuring cup to the clear bowl and nest the base inside the bowl.
4. Place the lid on top of the stacked base and bowl.
5. Store in a dry place.





# WARRANTY TERMS AND CONDITIONS

## ONE-YEAR LIMITED WARRANTY ON PARTS AND LABOR

**BAUMANN LIVING** provides a warranty to the original purchaser of this product against defects in materials and workmanship for one year. If a product covered by this warranty is determined to be defective within the warranty period, **BAUMANN LIVING** will repair or replace the defective part with a new or remanufactured part free of charge subject to terms and conditions stated herein.

To obtain warranty service, proof of purchase in the form of a sales invoice or copy thereof is required to show that a product is within the warranty period. If any one of the documents cannot be produced, corresponding fees for labor and replacement parts will be charged.

### Parts and Labor

There will be no charge for parts and labor during the warranty period. Replacement parts or units may be new or recertified and are upon **BAUMANN LIVING's** option and sole discretion. Replacement parts and units are warranted for the remaining portion of the original warranty. Our decision on all questions relating to complaints as a result of defects, either workmanship or materials, shall be conclusive and you shall agree to abide by such decision. Any unit or defective part that have been replaced shall become **BAUMANN LIVING's** property. After the lapse of this warranty, a charge will be made on all labor and replacement of parts.

## Types of Services

Defective Products must be sent to any **BAUMANN LIVING** service center to obtain warranty service. **BAUMANN LIVING** is neither responsible for transportation costs to the service center nor **BAUMANN LIVING** will cover return shipping to the customer. Product returns to **BAUMANN LIVING** service centers must utilize either the original carton box and shipping material or packaging that affords an equal degree of protection.

For home service, the transportation fee of **BAUMANN LIVING** service personnel will be charged to the customer, depending on the location. Our service personnel reserve all rights to refuse to attend to any equipment installed in an inaccessible location or any other hazardous situation.

## LIMITATIONS AND EXCLUSIONS

**BAUMANN LIVING** one-year limited warranty only covers defects in materials and workmanship; however, this warranty does not cover the following:

1. Damage resulting from accidents, transport, misuse, abuse, alteration, tampering, or failure of the purchaser to follow normal operating procedures outlined in the user's manual.
2. Damage caused by negligence and poor maintenance.
3. Defects or damage due to spillage of food/liquids or improper usage of electrical supply or electrical circuit, major fluctuations in voltage, exposure to rain or moisture, wrong fuel or oil used.
4. Damage, losses, and defects as a result of fire, flood, or other Acts of God.

5. Normal wear-and-tear, corrosion, rusting, or stains.
6. Defects & damage arising from improper testing, operation, usage of the wrong component, demonstration, maintenance, installation, adjustment, or any alteration or modification of any kind.
7. Scratches & damage to the outer surface areas and externally exposed parts that are due to normal customer use.
8. General maintenance & routine servicing.
9. Claims for damaged/missing parts after 7 days from the date of purchase.
10. If any part or parts of the unit are replaced with a part or parts not supplied or approved by us, or if the unit has been dismantled or repaired by any person other than a **BAUMANN LIVING** authorized technician.
11. Any equipment/product which has its serial number removed or made illegible/tampered with.
12. If the warranty card is altered, defaced, or erased in any manner whatsoever.
13. If the unit is used for purposes other than household use, such as commercial use.

The one (1) year warranty covers the mainboard and power PCB, and power supply. However, this warranty does not cover parts (i.e., accessories, measuring cup, bowl, rotary knob, stirring bar) that are subject to wear and tear, rust, stains, or corrosion.

This limited warranty does not cover Products sold "AS IS", "FACTORY RECTIFIED", or by a non-authorized reseller.

THERE ARE NO EXPRESS WARRANTIES OTHER THAN THOSE LISTED OR DESCRIBED ABOVE. ANY IMPLIED WARRANTIES, INCLUDING ANY

IMPLIED WARRANTY OF MERCHANTABILITY AND FITNESS FOR A PARTICULAR PURPOSE, SHALL BE LIMITED IN DURATION TO THE PERIOD OF TIME SET FORTH ABOVE. **BAUMANN LIVING'S** TOTAL LIABILITY FOR ANY AND ALL LOSSES AND DAMAGES RESULTING FROM ANY CAUSE WHATSOEVER INCLUDING **BAUMANN LIVING'S** NEGLIGENCE, ALLEGED DAMAGE, OR DEFECTIVE GOODS, WHETHER SUCH DEFECTS ARE DISCOVERABLE OR LATENT, SHALL IN NO EVENT EXCEED THE PURCHASE PRICE OF THE PRODUCT. **BAUMANN LIVING** SHALL NOT BE RESPONSIBLE FOR LOSS OF USE, COMMERCIAL LOSS, LOST REVENUE OR LOST PROFITS, OR OTHER INCIDENTAL OR CONSEQUENTIAL DAMAGES. THIS WARRANTY IS SUBJECT TO CHANGE WITHOUT NOTICE.

IMPORTANT: Please present sales invoice as proof of purchase whenever you require our service during the warranty period.

[www.baumannliving.com](http://www.baumannliving.com)