

**BAUMANN  
LIVING**  
PROFESSIONAL

---

# COMMERCIAL RICE COOKER & WARMER



**BM-SA8254**

**INSTRUCTIONS MANUAL**

[www.baumannliving.com](http://www.baumannliving.com)



## TABLE OF CONTENTS

<b>IMPORTANT SAFEGUARDS .....</b>	<b>3</b>
<b>PARTS AND FEATURES.....</b>	<b>6</b>
<b>BEFORE FIRST USE.....</b>	<b>7</b>
<b>HOW TO COOK RICE .....</b>	<b>8</b>
<b>COOKING TIPS.....</b>	<b>10</b>
<b>CLEANING AND MAINTENANCE .....</b>	<b>11</b>
Cleaning the Exterior Body and Inner Pot .....	11
Cleaning the Underside of the Outer Lid .....	12
Cleaning the Heating Plate .....	13
<b>WARRANTY TERMS AND CONDITIONS.....</b>	<b>14</b>

## IMPORTANT SAFEGUARDS

When using this appliance, basic safety precautions should always be followed, including the following:

1. Read all instructions.
2. Do not use any appliance with a damaged cord or plug. If the cord is damaged it should be replaced with the same type and size or bring the unit to the nearest authorized service center.
3. Ensure the appliance is switched off and unplugged from the supply socket after use and before cleaning.
4. Always allow the appliance to cool before cleaning or storing.
5. The appliance is not intended for use by person (including children) with reduced physical, sensory or mental capabilities, or lack of experience and knowledge, unless they have been given supervision or instruction concerning use of the appliances by the person responsible for their safety.
6. If the supply cord is damaged, it must be replaced by the manufacturer, its service agent or similarly qualified persons in order to avoid a hazard.
7. Never use this appliance for anything other than its intended use. This appliance is for household use only. Do not use this appliance outdoors.

8. Do not touch hot surfaces, use handles or knobs. Use pot holders when removing hot containers.
9. To protect against electric shock, never immerse any part of the appliance or power cord and plug in water or any other liquid.
10. Never let the power cord hang over the edge of a work top, touch hot surfaces or become knotted, trapped or pinched.
11. This appliance must not be placed on or near any potentially hot surfaces (such as a gas or electric hob).
12. Use the rice cooker only with the supplied inner pot. Do not use the inner pot for other purpose than cooking or warming rice.
13. Do not use the Inner pot on direct heat.
14. Be cautious of high temperature during cooking. Do not touch the steam valve while cooking. Ensure that the valve is always unobstructed.
15. This appliance can be used by children aged from 8 years and above and persons with reduced physical, sensory or mental capabilities or lack of experience and knowledge if they have been given supervision or instruction concerning use of the appliance in a safe way and understand the hazards involved.
16. Do not allow cord to touch hot surface of the Rice Cooker.
17. Do not loop the cord around the Rice Cooker after use.
18. Keep the Rice Cooker in a dry and cool place.

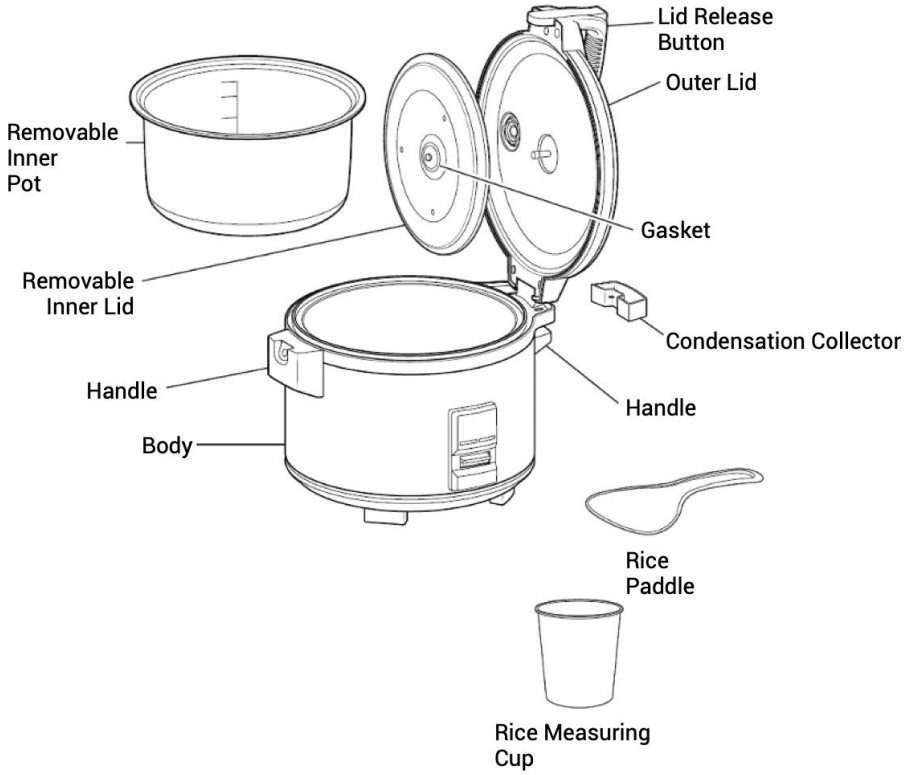
19. This appliance is intended to be used in household and similar applications such as:

- a. staff kitchen areas in shops, offices and other working environments;
- b. farm houses;
- c. by clients in hotels, motels and other residential type environments;
- d. bed and breakfast type environments.

20. Children should be supervised to ensure that they do not play with the appliance.

**SAVE THESE INSTRUCTIONS.  
FOR HOUSEHOLD OR COMMERCIAL USE.**

# PARTS AND FEATURES



## **BEFORE FIRST USE**

1. Read all instructions and important safeguards.
2. Remove all packaging materials and make sure items are received in good condition.
3. Tear up all plastic bags as they can pose a risk to children.
4. Wash accessories in warm, soapy water. Rinse and dry thoroughly.
5. Remove inner pot from rice cooker and clean with warm, soapy water. Rinse and dry thoroughly before returning to cooker.
6. Wipe body clean with a damp cloth.



# HOW TO COOK RICE

1. Measure the amount of rice needed with the measuring cup provided. One full cup of uncooked rice will roughly double in volume once cooked.
2. Rinse rice in a separate container until the water runs clear.
3. Place washed rice in the inner pot.
4. Add water to inner pot up to the corresponding marking.

<b>STEP 1 UNCOOKED WHITE RICE</b>	<b>STEP 2 FILL WATER TO LINE ON INNER POT</b>	<b>ESTIMATE YIELD</b>
10 cups	10	20 cups
15 cups	15	30 cups
20 cups	20	40 cups
25 cups	25	50 cups
30 cups	30	60 cups
32 cups	32	64 cups

5. Set the inner pot into the rice cooker, ensuring that it is directly in contact with the heating plate. Make sure the inner pot is securely seated by rotating the pot left and right.

## NOTES:

- *If inner pot is bent or warped, it will not sit properly on the plate and therefore will not cook rice correctly.*
- *Make sure that the exterior of the inner pot is clean, dry and free of debris.*

6. Close the outer lid securely.
7. Plug the power cord into an available outlet. When the power cord is attached, the "Cook" indicator comes on for about 2-3 minutes before switching to the "Keep Warm" indicator – this does not mean unit is cooking.
8. Press down on the Cook switch. The "Cook" indicator light comes on.
9. When the rice is done, the Cook switch pops up and the cooker automatically switches to Keep Warm mode. The "Cook" indicator light goes off and the "Keep Warm" indicator light comes on.

For best results, allow rice to stand for 15 minutes without opening the lid. This ensures that the rice is cooked thoroughly.

10. Carefully open the lid, allowing any steam and condensation to run back into the rice cooker.

11. Using the rice paddle provided, gently mix the rice and serve. The rice cooker will remain in Keep Warm mode until it is unplugged. Be sure to unplug the cord from the wall outlet when not in use.

## **COOKING TIPS**

- Cook times and water levels will vary with other varieties of rice.
- The most important detail when cooking rice is the ratio of rice to water. Please refer to the rice package directions.
- To prevent overflow and/or overheating, do not exceed the maximum fill line when both rice and water are added to the inner pot.
- Brown rice takes more water to cook and cooking time is longer.
- Due to the extra water needed to cook brown rice, do not use the inner pot water measurement lines. The inner pot water measurement lines are intended for use only with white rice.

## CLEANING AND MAINTENANCE

Always unplug unit and allow to cool completely before cleaning.

### Cleaning the Exterior Body and Inner Pot

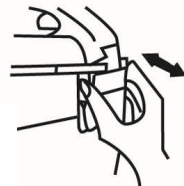
Always make sure the outside of the inner pot is dry prior to use. If the inner pot is returned when wet, it may damage the unit, causing it to malfunction.

1. Remove the inner pot. Wash it in warm, soapy water using a non-abrasive sponge or dishcloth.
2. Rinse and dry thoroughly.
3. Empty out the condensation collector into a sink after each use. Remove the condensation collector by pulling it out from its indented portion. Reattach the condensation collector before next use.

TO REMOVE – hold the sides and pull

TO ATTACH – align and push

Condensation  
Collector

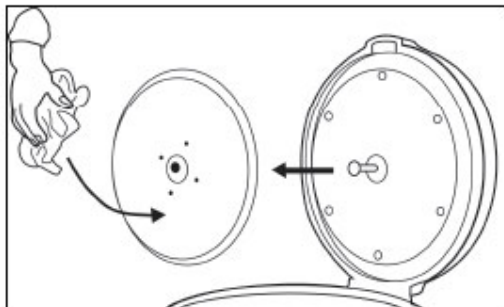


4. Wipe the body of the rice cooker clean with a damp cloth.

## Cleaning the Underside of the Outer Lid

*The underside of the lid should be cleaned after every use.*

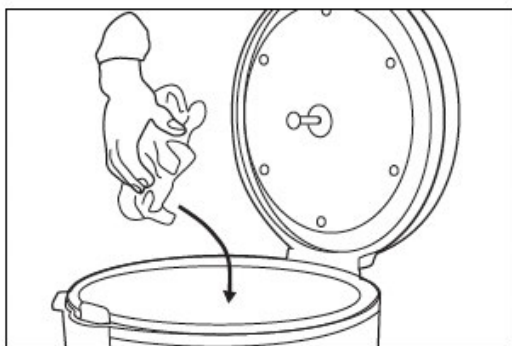
1. Detach the inner lid from the shaft by gently tugging it outward. Soak briefly.
2. Wipe the underside of the lid with a warm, damp cloth.
3. Dry with a soft, dry cloth.
4. Install the inner lid to the outer lid by pressing the inner lid over the inner lid shaft. After installing the inner lid, the small side of the inner lid seal should face you with the outer lid open. If the inner lid is inserted improperly, the outer lid will not close.



## Cleaning the Heating Plate

*The heating plate should be cleaned after every use.*

1. Wipe the heating plate with a warm, damp cloth.
2. Dry with a soft, dry cloth.
3. Rice grains or other dried food may stick to the heating plate. Repeat Steps 1 and 2 until the heating plate is completely clean to ensure full contact between the inner pot and the heating plate; otherwise, the appliance will not close properly and may overheat.



# WARRANTY TERMS AND CONDITIONS

## ONE-YEAR LIMITED WARRANTY ON PARTS AND LABOR

**BAUMANN LIVING** provides a warranty to the original purchaser of this product against defects in materials and workmanship for one year. If a product covered by this warranty is determined to be defective within the warranty period, **BAUMANN LIVING** will repair or replace the defective part with a new or remanufactured part free of charge subject to terms and conditions stated herein.

To obtain warranty service, proof of purchase in the form of a sales invoice or copy thereof is required to show that a product is within the warranty period. If any one of the documents cannot be produced, corresponding fees for labor and replacement parts will be charged.

### **Parts and Labor**

There will be no charge for parts and labor during the warranty period. Replacement parts or units may be new or recertified and are upon **BAUMANN LIVING's** option and sole discretion. Replacement parts and units are warranted for the remaining portion of the original warranty. Our decision on all questions relating to complaints as a result of defects, either workmanship or materials, shall be conclusive and you shall agree to abide by such decision. Any unit or defective part that have been replaced shall become **BAUMANN LIVING's** property. After the lapse of

this warranty, a charge will be made on all labor and replacement of parts.

## **Types of Services**

Defective Products must be sent to any **BAUMANN LIVING** service center to obtain warranty service. **BAUMANN LIVING** is neither responsible for transportation costs to the service center nor **BAUMANN LIVING** will cover return shipping to the customer. Product returns to **BAUMANN LIVING** service centers must utilize either the original carton box and shipping material or packaging that affords an equal degree of protection.

For home service, the transportation fee of **BAUMANN LIVING** service personnel will be charged to the customer, depending on the location. Our service personnel reserve all rights to refuse to attend to any equipment installed in an inaccessible location or any other hazardous situation.

## **LIMITATIONS AND EXCLUSIONS**

**BAUMANN LIVING** one-year limited warranty only covers defects in materials and workmanship; however, this warranty does not cover the following:

1. Damage resulting from accidents, transport, misuse, abuse, alteration, tampering, or failure of the purchaser to follow normal operating procedures outlined in the user's manual.
2. Damage caused by negligence and poor maintenance.



3. Defects or damage due to spillage of food/liquids or improper usage of electrical supply or electrical circuit, major fluctuations in voltage, exposure to rain or moisture, wrong fuel or oil used.
4. Damage, losses, and defects as a result of fire, flood, or other Acts of God.
5. Normal wear-and-tear, corrosion, rusting, or stains.
6. Defects & damage arising from improper testing, operation, usage of the wrong component, demonstration, maintenance, installation, adjustment, or any alteration or modification of any kind.
7. Scratches & damage to the outer surface areas and externally exposed parts that are due to normal customer use.
8. General maintenance & routine servicing.
9. Claims for damaged/missing parts after 7 days from the date of purchase.
10. If any part or parts of the unit are replaced with a part or parts not supplied or approved by us, or if the unit has been dismantled or repaired by any person other than a **BAUMANN LIVING** authorized technician.
11. Any equipment/product which has its serial number removed or made illegible/tampered with.
12. If the warranty card is altered, defaced, or erased in any manner whatsoever.
13. If the unit is used for purposes other than household use, such as commercial use.

The one (1) year warranty period covers the mainboard and control PCB, heating element, and power supply. However, this

warranty does not cover parts (i.e. accessories, handles, inner pot, fuse, interior and exterior casing, removable inner lid, condensation collector, gasket, lid-release button) that are subject to wear and tear, rust, stains, or corrosion. This one-year limited warranty does not cover Products sold **"AS IS"**, **"FACTORY RECTIFIED"**, or by a non-authorized reseller.

THERE ARE NO EXPRESS WARRANTIES OTHER THAN THOSE LISTED OR DESCRIBED ABOVE. ANY IMPLIED WARRANTIES, INCLUDING ANY IMPLIED WARRANTY OF MERCHANTABILITY AND FITNESS FOR A PARTICULAR PURPOSE, SHALL BE LIMITED IN DURATION TO THE PERIOD OF TIME SET FORTH ABOVE. **BAUMANN LIVING'S** TOTAL LIABILITY FOR ANY AND ALL LOSSES AND DAMAGES RESULTING FROM ANY CAUSE WHATSOEVER INCLUDING **BAUMANN LIVING'S** NEGLIGENCE, ALLEGED DAMAGE, OR DEFECTIVE GOODS, WHETHER SUCH DEFECTS ARE DISCOVERABLE OR LATENT, SHALL IN NO EVENT EXCEED THE PURCHASE PRICE OF THE PRODUCT. **BAUMANN LIVING** SHALL NOT BE RESPONSIBLE FOR LOSS OF USE, COMMERCIAL LOSS, LOST REVENUE OR LOST PROFITS, OR OTHER INCIDENTAL OR CONSEQUENTIAL DAMAGES. THIS WARRANTY IS SUBJECT TO CHANGE WITHOUT NOTICE.

**IMPORTANT:** Please present sales invoice as proof of purchase whenever you require our service during the warranty period.

[www.baumannliving.com](http://www.baumannliving.com)