

BAUMANN

sandwich
maker

Lorem ipsum dolor sit amet,
consectetur adipiscing elit,

sandwich-
maker

Lorem ipsum dolor sit amet,
consectetur adipiscing elit,



BM-LW618N

INSTRUCTIONS MANUAL/ GEBRAUCHSANWEISUNG

www.baumannliving.com

TABLE OF CONTENTS

IMPORTANT SAFEGUARDS	2
PARTS AND FEATURES	4
BEFORE FIRST USE	5
USING THE SANDWICH MAKER	5
Using the Grill Plates	7
HINTS AND TIPS	7
CLEANING AND MAINTENANCE	8

IMPORTANT SAFEGUARDS

When using this appliance, basic safety precautions should always be followed, including the following:

1. This appliance is not intended for use by persons (including children) with reduced physical, sensory or mental capabilities, or lack of experience and knowledge, unless they have been given supervision or instruction concerning use of the appliance by a person responsible for their safety.
2. Children should be supervised to ensure that they do not play with the appliance.
3. Always use the product on a flat, stable, heat-resistant surface.
4. The temperature of the accessible surfaces may be very high when the appliance is in use. Make sure not to touch these hot parts of the appliance.
5. Use the product in a well-ventilated area. Keep at least 4-6 inches of space on all sides of the product to allow adequate air circulation.
6. Do not place the product on or near a gas or electric burner, or inside or on top of a heated oven or other heat source.
7. Do not allow the product to touch curtains, wall coverings, clothing, dishtowels, or other flammable materials while in use.
8. Do not move the product while it is plugged in. Allow the product to thoroughly cool before handling it.

9. Do not use attachments not recommended for use with this product or sold by the product manufacturer.
10. Do not use the product near water or other liquids. If the product falls into water, immediately unplug it from the electrical outlet. Do not touch or reach into the water.
11. Do not leave the product unattended while it is in use. The appliance is not intended to be operated by means of an external timer or separate remote-control system.
12. Do not put any stress on the power cord where it connects to the product as the power cord could fray and break.
13. Do not plug or unplug the product into/from an electrical outlet with wet hands.
14. Keep the product and its power cord away from heated surfaces.
15. Never operate this product if it has a damaged power cord or plug, is not working properly, has been dropped, damaged, or exposed to water or other liquids.
16. If the supply cord is damaged, it must be replaced by the manufacturer or its service agent or a similarly qualified person in order to avoid a hazard
17. This product is intended for indoor, non-industrial, non-commercial, household use only as a panini maker and healthy grill. Do not use the item outdoors or for any other purpose.
18. Do not allow the power cord to hang where it may be tripped over or pulled (e.g., over the edge of a table or counter).

SAVE THESE INSTRUCTIONS. FOR HOUSEHOLD USE ONLY.

PARTS AND FEATURES



Sandwich plate, Grill plate and Waffle plate

BEFORE FIRST USE

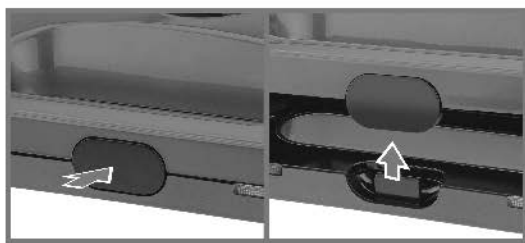
Before using this product for the first time, clean it as described in the **Cleaning and Maintenance** section.

NOTE: During the initial use of this product, some smoke may be emitted. This is normal and will subside with further use.

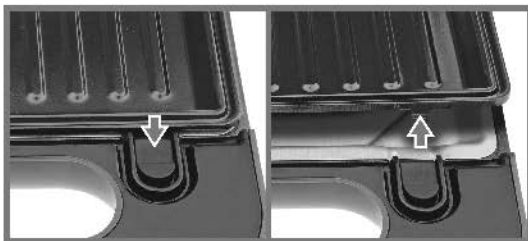
USING THE SANDWICH MAKER

CAUTION: *Do not use this product to cook or defrost frozen food. All food must be completely defrosted before cooking with this product.*

1. Press cover lock to unlock cover.



2. Select from sandwich plates, waffle plates, or grill plates; then attach the 2 detachable plates onto the cover & base. Make sure that the plates are correctly aligned with the notches on the hinges of the cover and base.



3. Close the cover and plug cord into electrical outlet. The red Power indicator light will illuminate.
4. Preheat with cover closed until the green Ready indicator light comes on.
5. Press cover lock to unlock cover, raise cover, and place food on bottom plate. Close and lock cover. The green Preheat light will cycle on and off during cooking.
6. Open cover to check if food is cooked through. If more cooking time is needed, close the cover to resume cooking.
Once food is cooked as desired, remove food with plastic or wooden utensil. Never use metal. This will damage the nonstick coating.

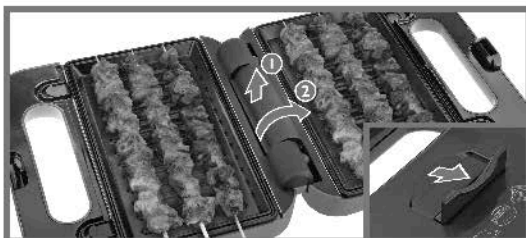
NOTE: *The cooking time depends on the type and thickness of the food. Most sandwiches are toasted in 3 to 5 minutes.*

WARNING! *The cover and base gets hot during use. Always use the handle on the cover. To prevent burns, never touch cooking plates while hot. Always use oven mitts to protect your hands when opening and closing the unit as steam may emit from the sides and can cause burns.*

6. Unplug the unit from power outlet. Let cool.

Using the Grill Plates

1. Carefully lift the cover by the handle and open the unit 180° so that it lays flat on the table and both grill plates are facing up. Pull out the stand from the cover for added support and stability.



2. Place food on the lower grill plate and/or place food on the upper grill plate. Turn food with a heat-resistant nylon or silicone cooking utensil.
3. When you have finished cooking, unplug the unit and allow it to cool completely before moving or cleaning.

HINTS AND TIPS

- Always preheat the Sandwich Maker
- For best browning results, lightly butter outside of sandwich before toasting; or spray cooking grids lightly with nonstick cooking spray before toasting.
- Try different types of breads and fillings. The Sandwich Maker toasts the outside, seals the edges, and warms the sandwich filling.
- Remove food with tongs or plastic spatula. Do not use metal knives or forks.

CLEANING AND MAINTENANCE

WARNING! *To reduce the risk of electrical shock, do not immerse the cord, plug, or base in water or any other liquid.*

1. Unplug from outlet and let cool.
2. Wipe cooking plates and outside of unit with a damp, soapy cloth. Rinse cloth and wipe plates again.
3. Do not use steel wool, scouring pads, or abrasive cleansers on any part of the unit. Never use sharp or pointed objects for cleaning purposes.
4. Always allow the appliance to cool down completely before storing.