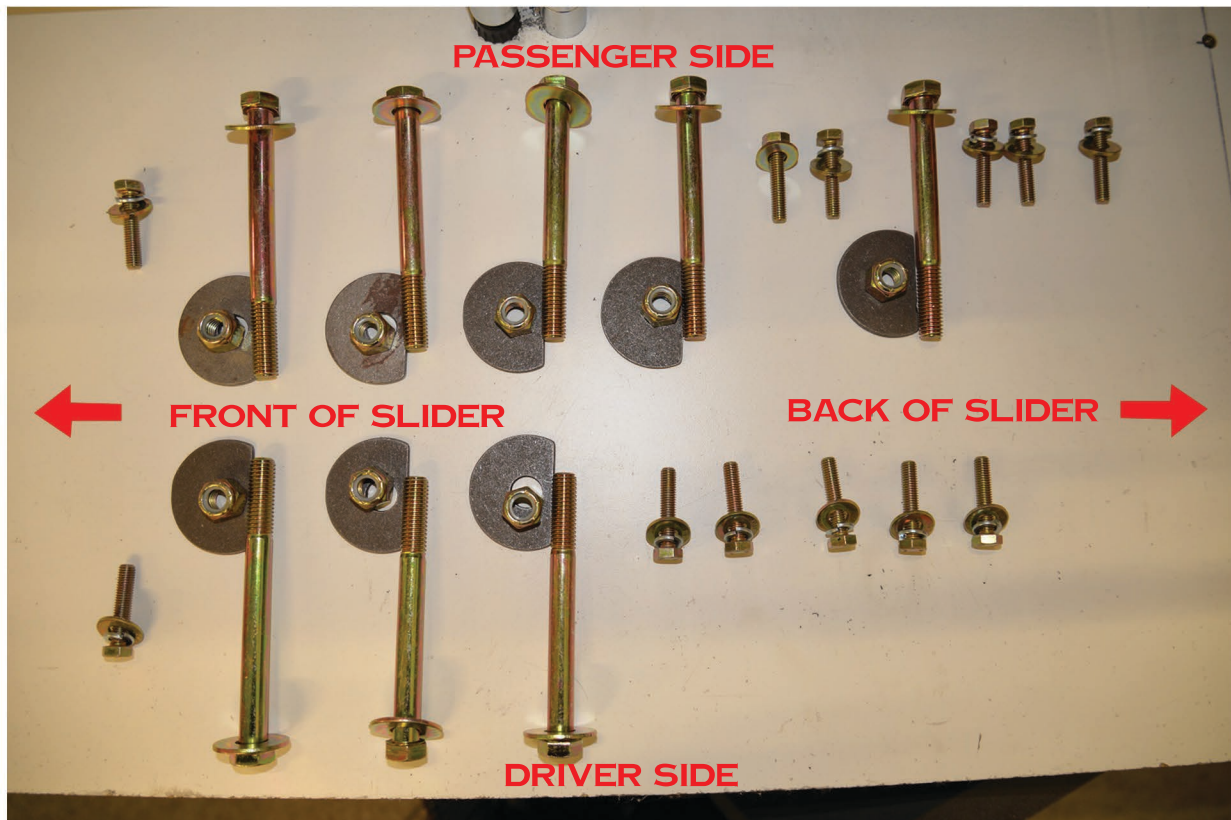




RSG METAL WORKS
720.523.3999
ORDERS@RSGOFFROAD.COM

**2003 - 2009 4TH GEN TOYOTA 4RUNNER & LEXUS GX470
ROCK SLIDER INSTALLATION INSTRUCTIONS**

THE FRAMES VARY FROM YEAR TO YEAR BETWEEN 4RUNNER 2003 - 2009 AND GX470. YOU'LL NEED TO HAVE THE HARDWARE LAID OUT AS SHOWN BELOW. NOTE: 2 OF THE 8 BIG BOLTS ARE LONGER THAN THE OTHER 6. THE LONGER BIG BOLTS GO TOWARDS THE FRONT OF EACH SLIDER. YOU WILL HAVE EXTRA HARDWARE WHEN YOU ARE FINISHED.



BOLT DIAGRAM



RSG METAL WORKS
720.523.3999
ORDERS@RSGOFFROAD.COM

**2003 - 2009 4TH GEN TOYOTA 4RUNNER & LEXUS GX470
ROCK SLIDER INSTALLATION INSTRUCTIONS**

1. FIRST STEP IS TO UNBOLT THE EMERGENCY BRAKE LINE ON BOTH THE DRIVER AND PASSENGER SIDES AS SHOWN BELOW. THE SLIDER MOUNTING PLATE GOES BETWEEN THE EMERGENCY BRAKE LINE BRACKET AND THE FRAME.



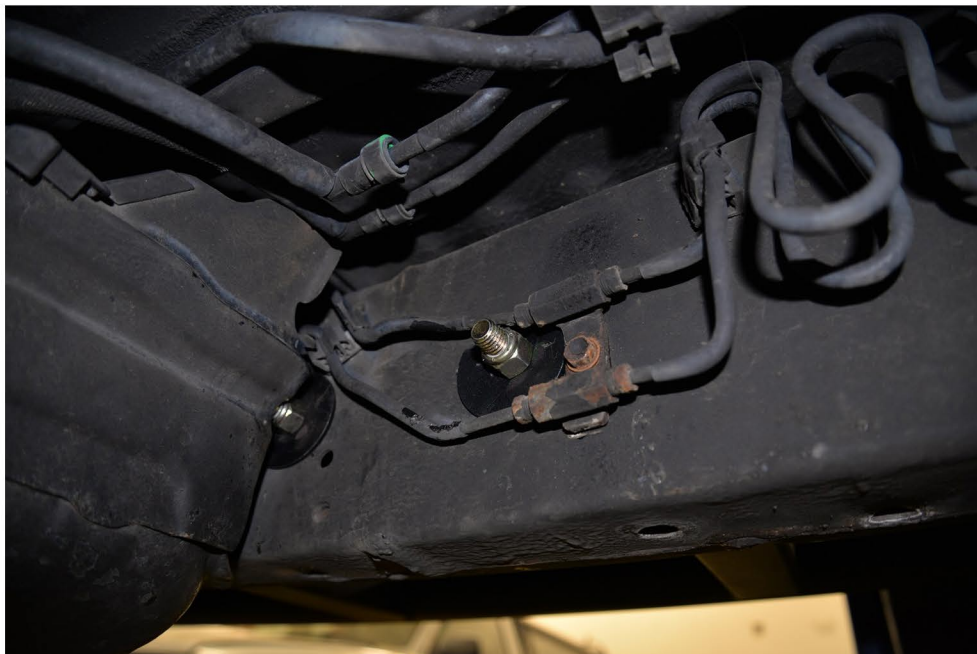
2. ONCE THE EMERGENCY BRAKE LINE BRACKET IS REMOVED, YOU CAN POSITION THE SLIDER ONTO THE FRAME. NOTE: THE BRAKE LINE SHOULD BE ON TOP OF THE MOUNTING PLATE. LINE UP THE SLIDER POSITION UNTIL THE MOUNTING HOLES LINE UP AND YOU ARE ABLE TO START PUTTING BOLTS THROUGH THE FRAME. IF YOU ARE HAVING A HARD TIME INSTALLING BOLTS OR FINDING BOLT LOCATIONS, YOU LIKELY HAVE THE SLIDER TOO FAR FORWARD OR TOO FAR BACKWARD. REFER THE HARDWARE DIAGRAM SHOWING THE 2 LONGER BOLTS GO TOWARD THE FRONT OF EACH SLIDER (IF THE BOLT APPEARS TOO SHORT TO GO THROUGH THE FRAME ON THE FRONT, YOU HAVE INSTALLED THE WRONG BOLT).



RSG METAL WORKS
720.523.3999
ORDERS@RSGOFFROAD.COM

**2003 - 2009 4TH GEN TOYOTA 4RUNNER & LEXUS GX470
ROCK SLIDER INSTALLATION INSTRUCTIONS**

3. PLACE AS MANY OF THE LARGER BOLTS THROUGH THE SLIDER AND FRAME AS YOU CAN, USING THE SEMI CIRCLE WASHERS AND NUT ON THE OTHER SIDE OF THE FRAME. DON'T TIGHTEN THEM UNTIL THE END TO ALLOW FOR MOVEMENT.





RSG METAL WORKS
720.523.3999
ORDERS@RSGOFFROAD.COM

**2003 - 2009 4TH GEN TOYOTA 4RUNNER & LEXUS GX470
ROCK SLIDER INSTALLATION INSTRUCTIONS**



4. THREAD THE SMALLER BOLTS INTO AS MANY LOCATIONS AS POSSIBLE, WHERE THEY THREAD INTO THE FRAME. NOTE THAT THE MOUNTING PLATES ARE MADE TO BE COMPATIBLE WITH THE FRAME VARIATIONS. WHICH MEANS YOU WON'T BE ABLE TO PUT A BOLT INTO EACH LOCATION ON THE MOUNTING PLATE.

5. REATTACH THE EMERGENCY BRAKE LINE WITH ONE OF THE SUPPLIED BOLTS AS SHOWN ABOVE. □ YOU WILL NEED TO DO THIS ON BOTH SIDES. ONCE ALL THE BOLTS ARE STARTED, YOU CAN START TIGHTENING THEM AS TO LEVEL THE SLIDER OUT AS YOU TIGHTEN EACH BOLT. TORQUE THE LARGER BOLTS TO 35 FT LBS AND THE SMALLER ONES TO 24 FT LBS.