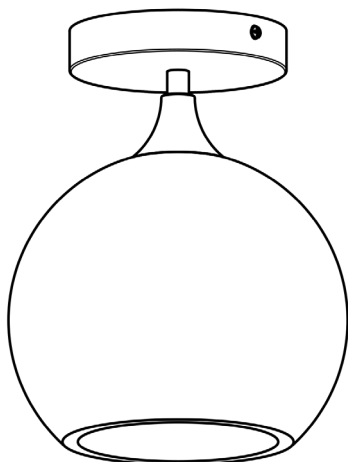


BICYCLE GLASS CO.

**SEMI-FLUSH
ASSEMBLY AND WIRING INSTRUCTIONS**



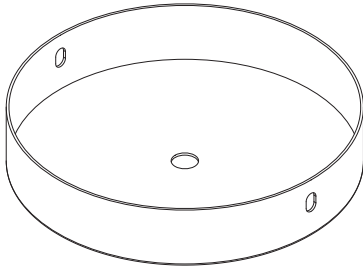
Intertek

LISTED

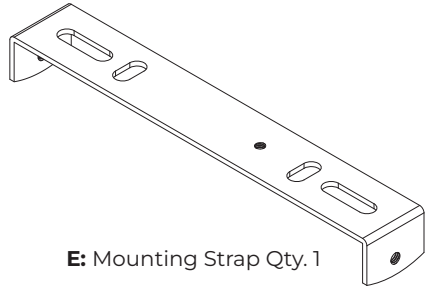
All Lighting is UL or ETL
listed for US and Canada.

PLEASE CONSULT A CERTIFIED ELECTRICIAN BEFORE INSTALLING HARDWARE. DRAWINGS ARE NOT TO SCALE AND ARE FOR REFERENCE ONLY. THESE INSTRUCTIONS ARE SUBJECT TO REVISION. THIS HARDWARE IS MEANT TO INSTALL INTO A STANDARD CEILING ELECTRICAL BOX/ JUNCTION BOX.

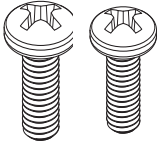
PARTS LIST:



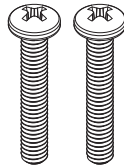
A: Canopy Plate Qty. 1



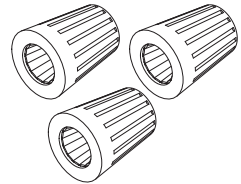
E: Mounting Strap Qty. 1



B: Canopy Screws
0.375 inches tall,
Qty. 2



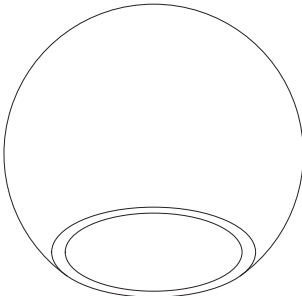
F: 8-32 Mounting Screws
1.25 inches tall, Qty. 2



I: Orange Wire Connectors Qty. 3

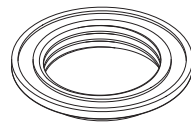


U: E26 Socket Set Qty. 1



W: Glass Shade* Qty. 1

V: Shade Ring Qty. 1



*Illustrated figure is Model 767: 7 inch inside diameter, 5 1/8 inch opening, 6 3/4 inch high. Your selected shade may be different.

WIRE DESIGNATION CHART:

BRUSHED NICKEL HARDWARE:

Physical Description	Electrical Designation
Clear Wire with black stripe	BLACK / HOT
Clear Wire with no stripe	WHITE / NEUTRAL
Clear Wire with green stripe	GREEN / GROUND

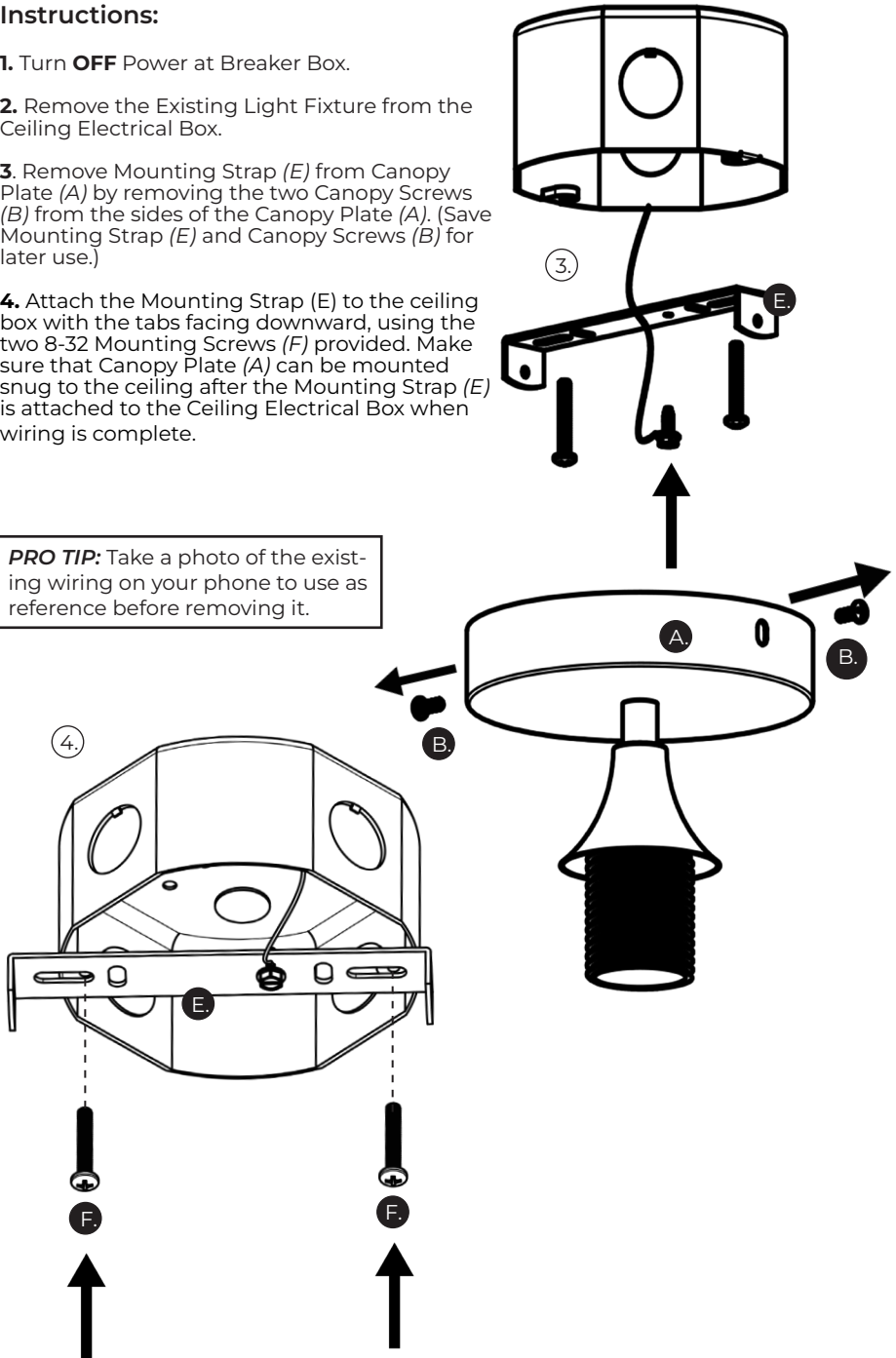
BLACK/ POLISHED BRASS/ ANTIQUE BRONZE HARDWARE:

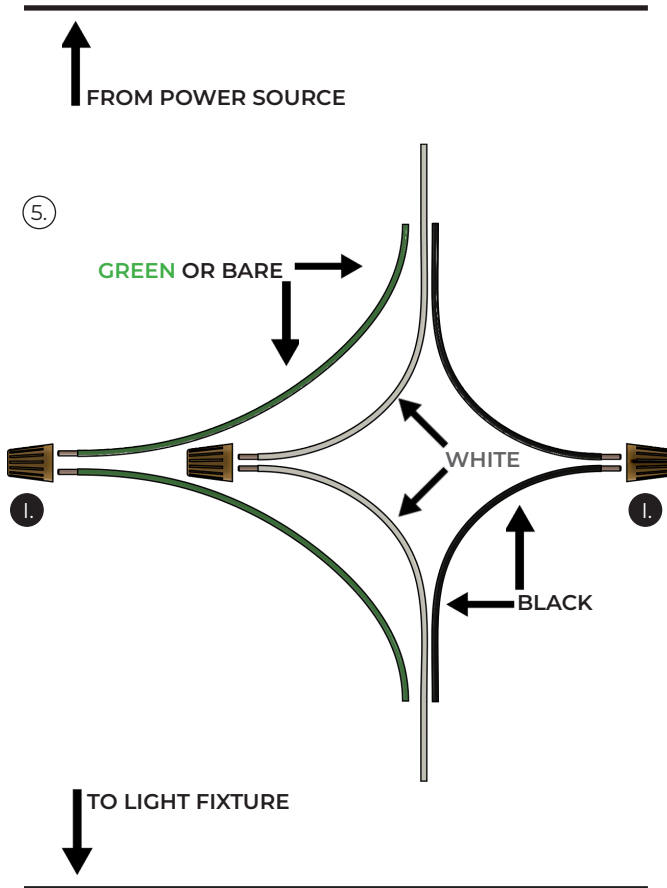
Physical Description	Electrical Designation
Black Wire with copper lead	BLACK / HOT
White Wire with copper lead	WHITE / NEUTRAL
Green Wire with copper lead	GREEN / GROUND

Instructions:

1. Turn **OFF** Power at Breaker Box.
2. Remove the Existing Light Fixture from the Ceiling Electrical Box.
3. Remove Mounting Strap (E) from Canopy Plate (A) by removing the two Canopy Screws (B) from the sides of the Canopy Plate (A). (Save Mounting Strap (E) and Canopy Screws (B) for later use.)
4. Attach the Mounting Strap (E) to the ceiling box with the tabs facing downward, using the two 8-32 Mounting Screws (F) provided. Make sure that Canopy Plate (A) can be mounted snug to the ceiling after the Mounting Strap (E) is attached to the Ceiling Electrical Box when wiring is complete.

PRO TIP: Take a photo of the existing wiring on your phone to use as reference before removing it.

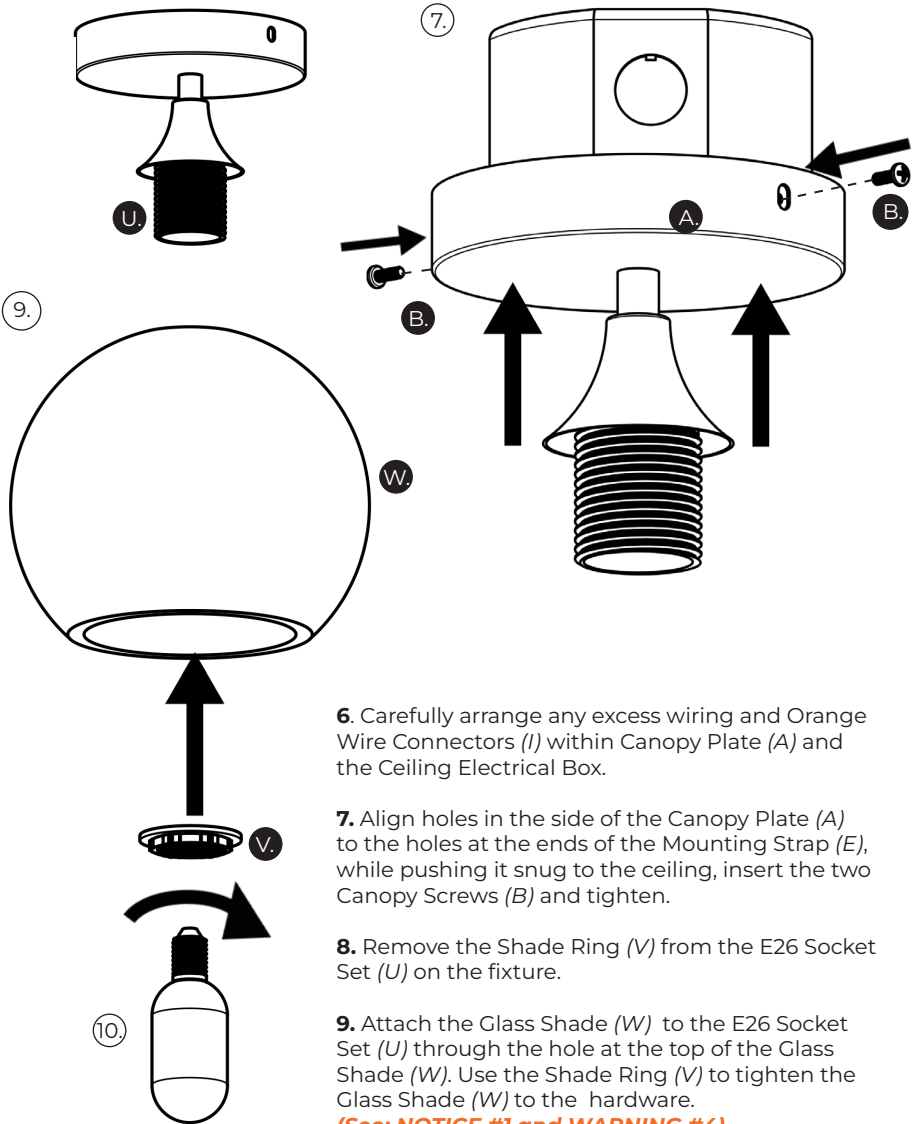




5a. Connect **BLACK** Wire of the fixture to **BLACK** Wire of the Ceiling Electrical Box using an Orange Wire Connector (I) provided. (See: **WARNING #2** and **WARNING #3**)

5b. Connect the **WHITE** Wire of the fixture to **WHITE** Wire of the Ceiling Electrical Box using an Orange Wire Connector (I) provided. (See: **WARNING #2**)

5c. Connect the BARE Ground Wire from Mounting Strap (E) to the **GREEN**/BARE Wire of the Ceiling Electrical Box and the **GREEN** Wire from the fixture, using an Orange Wire Connector (I) provided. (See: **WARNING #1** and **WARNING #3**)



6. Carefully arrange any excess wiring and Orange Wire Connectors (I) within Canopy Plate (A) and the Ceiling Electrical Box.

7. Align holes in the side of the Canopy Plate (A) to the holes at the ends of the Mounting Strap (E), while pushing it snug to the ceiling, insert the two Canopy Screws (B) and tighten.

8. Remove the Shade Ring (V) from the E26 Socket Set (U) on the fixture.

9. Attach the Glass Shade (W) to the E26 Socket Set (U) through the hole at the top of the Glass Shade (W). Use the Shade Ring (V) to tighten the Glass Shade (W) to the hardware.

(See: NOTICE #1 and WARNING #4)

10. Install one medium E26 base light bulb into the E26 Socket Set (U).

(See: WARNING #5)

11. Turn **ON** Power at Breaker Box to test the fixture.

WARNINGS:

WARNING #1: Never connect Ground Wire (**GREEN** or BARE) to **WHITE**/Neutral or **BLACK**/Hot Wire.

WARNING #2: Never connect the **BLACK**/Hot Wire to **WHITE**/Neutral Wire.

WARNING #3: Orange Wire Connectors (*I*) provided are designed to connect **TWO to FOUR** 18-gage wires and may be appropriate for your wiring situation. All wiring should be snugly and securely fastened with correctly sized wire connectors. If your wiring differs from this most simple example, you should consult a qualified electrician to be sure that the wiring is done safely and correctly with appropriate sized connectors for your unique wiring situation.

WARNING #4: Do **NOT** over tighten the Shade Ring (*V*) as the Glass Shade (*W*) may crack or break.

WARNING #5: The hardware has a 60-watt *INCANDESCENT MAX* rating. Do **NOT** exceed this rating. For California residents it is recommend to not go beyond a 10-watt *LED MAX* rating.

NOTICE #1: Brushed Nickel fixtures come with clear cord. The clear cord comes with distinct heat shrink colored labels instead of fully colored wires. Other finishes come with either black or brown cord and the individual wires are **BLACK**/Hot, **WHITE**/Neutral and **GREEN**/Ground.

(SEE: 'WIRE DESIGNATION' CHART AT THE BEGINNING OF INSTRUCTIONS).

NOTICE #2: Make sure power is **OFF** before attempting to adjust the Glass Shade (*W*). The flange of the Shade Ring (*V*) (wide and flat side of the ring) screws around the E26 Socket Set (*U*) against the Glass Shade (*W*) to affix it to the lighting fixture. The hole at the top of the shade is slightly larger than the E26 Socket Set (*U*). If the shade hangs slightly crooked then hold Glass Shade (*W*) while unscrewing the Shade Ring (*V*) a few turns. Once the Glass Shade (*W*) is loose, recenter the Glass Shade (*W*) to hang straight and then re-tighten the Shade Ring (*V*) to set Glass Shade (*W*) in place.