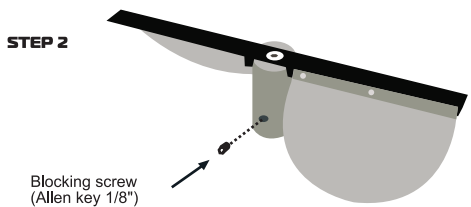




## BLADE HEIGHT

- 1- Unscrew the three nylon nuts that are on top of the grate to remove the grate.
- 2- Using the 1/8" Allen key, loosen the set screw located in the hole on the side of the aluminum hub, adjust the height of the blade manually and tighten the set screw.
- 3- Reinstall the grate on the machine.



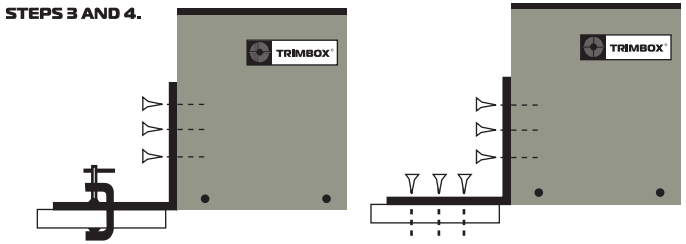
**WARNING!**  
WHEN THE MACHINE IS RUNNING:

- Never place your fingers or the gloves or any other body part in contact with the grate or the blade.
- Safety glasses and gloves are required at all time. The gloves have to be tight enough so they don't get inside the grate slots.  
A loose glove is dangerous, beware!
- Never apply pressure on the grate.
- Do not use scissors, knives or any instrument above the grate.

THE TRIMBOX IS DESIGNED TO BE USED WITH FRESHLY HARVESTED PLANTS.

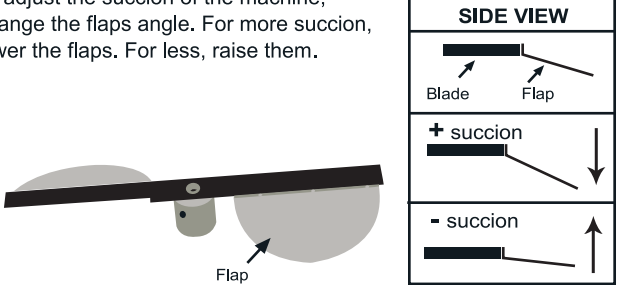
## USER INSTRUCTIONS

- 1- Read carefully the security instructions (see Warnings above) before using the machine.
- 2- Remove styrofoam protection from the tube before using the machine.
- 3- Fix the square attachments to the Trimbox with the screws supplied for this purpose.
- 4- Fix the Trimbox with the clamps or screw it to a work table.
- 5- Fix the bag under the Trimbox, attaching it on top of the small screws on the inferior part of the machine (It will prevent the bag from falling).
- 6- For trimming, move the plant back-and-forth and rotate it at the same time.



## TO ADJUST FLAPS SUCCION

To adjust the suction of the machine, change the flaps angle. For more suction, lower the flaps. For less, raise them.



## MAINTENANCE

In order to facilitate the trimming, spray some vegetable oil and clean the grate and blade frequently with soap or isopropyl alcohol. It has to be done when the machine is not running. Sharpen the blade when necessary. To sharpen it, never remove the blade from the hub.

**WARNING**

Do not remove the blade from the hub

**WARNING**

For security, we recommend to keep a distance of at least 1/8 of an inch (3mm) between the grate and the blade.

## SHARPENING

- 1- Unscrew the three nylon nuts that are on top of the grate to remove the grate (see drawing on top of the page).
- 2- Remove the set screw located in the hole on the side of the aluminum hub (see drawing on top of the page).
- 3- Remove the blade and the hub in one piece from the motor shaft.
- 4- Clean the blade with isopropyl alcohol.
- 5- Use a grindstone.
- 6- Put a gentle pressure with the bottom of the blade on the grindstone with the sharpening angle desired.
- 7- Pass the blade on the grindstone with a movement from left to right and from right to left until it is properly sharpened.
- 8- Put back the blade and the aluminum hub on the motor shaft.
- 9- Put back in position the set screw in the hole on the side of the aluminum hub. Make sure this set screw is aligned with the flat part of the motor shaft.
- 10- Reinstall the grate on the machine using the three nylon nuts.

## FOR INFORMATION OR TO ORDER

VISIT: [WWW.TRIMPRO.CA](http://WWW.TRIMPRO.CA)  
Contact: [info@trimpro.ca](mailto:info@trimpro.ca) Call (Canada): +1-450-349-0811

To be used in accordance with all existing laws and regulations. The manufacturer does not accept any responsibility for damages caused to or by the TRIMBOX, resulting from an inadequate use or assembly.

PATENT: CAN: 2.470.370 USA: 7.168.643 AUS: 2004269786  
PATENT PENDING: EUR: 04761713.9 CE STANDARD

Ref.: TBOX\_0111A