



SUPER ANCHOR SAFETY

CRA-Anchor Specifications Engineers Report:

Model Specification:

CRA-12 :1032 Loop Top

CRA-18 :1033 Loop Top

CRA-12 :1032-P Pass Through Top

CRA-18 :1033-P Pass Through Top

All custom CRA with riser heights up to 18.0"
and base plate dimensions as specified herein.

Specified Use:

CRA anchors are to be used for Personal fall protection only, **(PPE)** in accordance with manufacturers instructions shipped with the device at the time of purchase.

Loop Top: Rated for PPE connector attachments.

PTT Top: Rated for wire cable horizontal line use.

Non-Specified Use:

Not rated for window washing equipment
or suspended scaffolding.

Materials Specification:

Riser: A-36 steel pipe 1/4" wall thickness
x 3.0" o.d. diameter or equivalent.

Base Plate: A-36 steel x 3/8".

Top Fixtures: 5/8" A-36 steel rod.

Coating: Hot dip galvanized per ASTM –
A123 or ASTM –A153 or architect specified.

Stainless Steel:

A-36 steel specification may be substituted
with 316 or equal grade stainless steel.

Installation Specifications:

Mechanical Fastening:

See CRA Instruction/Specification
Manual: Required minimum: 36 ea.

#14 hex head screws of sufficient length to
penetrate the substrate by at least 1.0" and
rated for the substrate material type.

Concrete Slab 2,500 psi min.

4" thickness: Use 9/16" holes shown

in red: Required 8 ea. 1/2" d. 6,000lb tensile
strength bolts rated for concrete embedment

Bolt Attach:

Use 9/16" holes shown in red:

See Bolt Attachment Specifications: A minimum of
4 each, 1/2" d. grade 8, Stainless Steel, or grade
5 all thread and lock nuts.

Structural Engineering:

Steel plate, I beam, structural member capable
of supporting 5,000lb(22kN) or two times the
intended fall protection load.

Engineers Stamp:

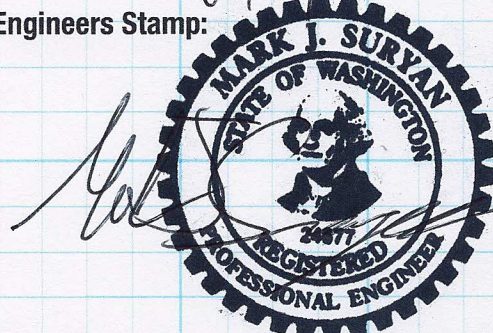


Fig.1

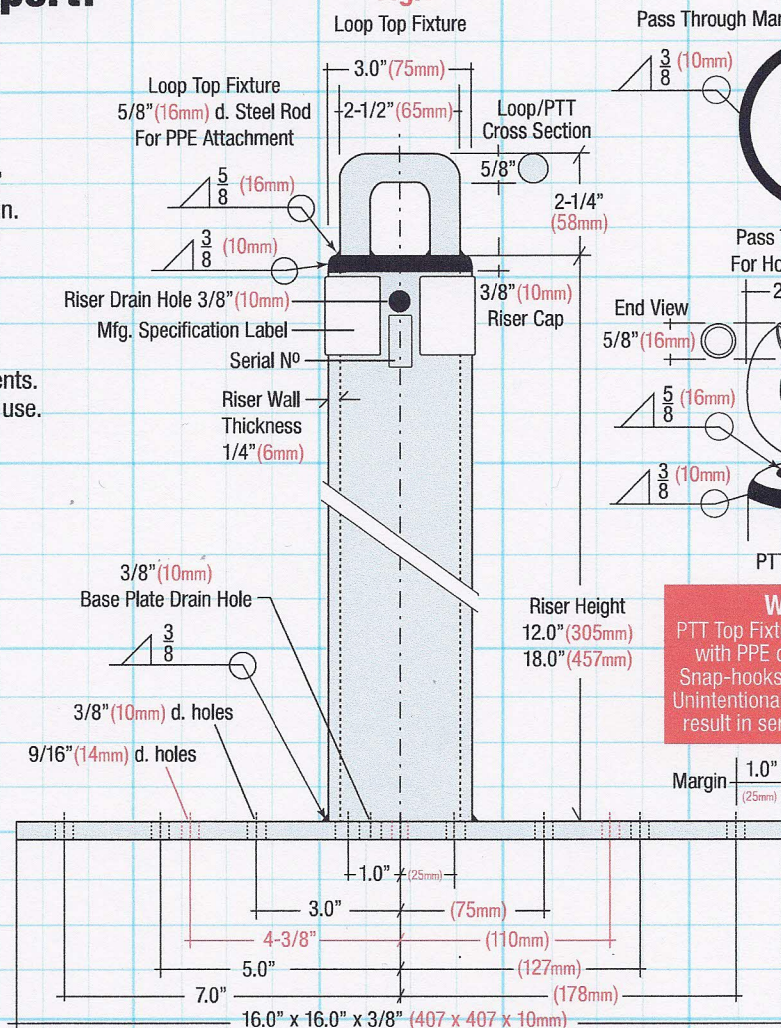
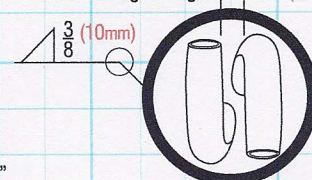


Fig.2

PTT Top Fixture
Top View

Pass Through Margin 1/4" (6mm)



Pass Through Top (PTT)
For Horizontal Line Cable

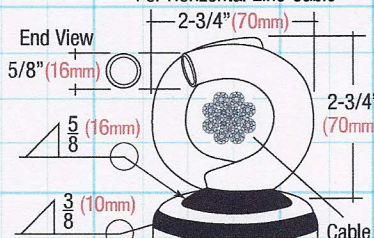


Fig.3

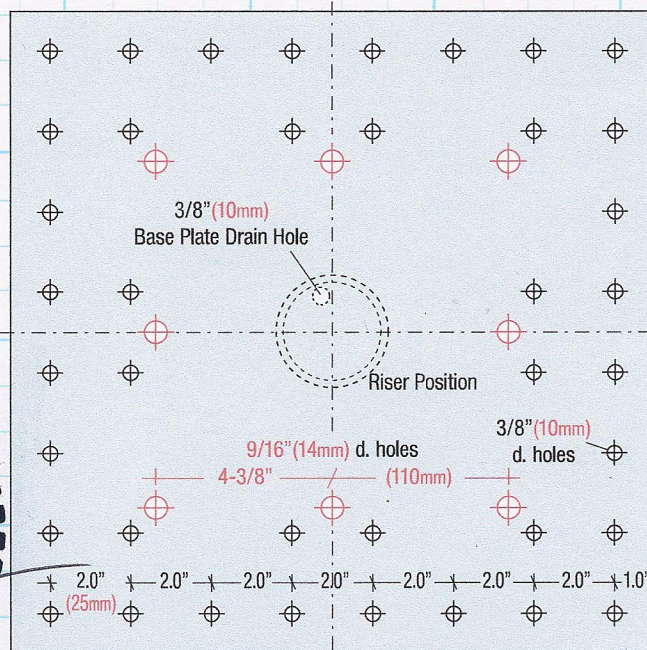
PTT Top Side View

Warning !

PTT Top Fixture is not compatible
with PPE connectors such as
Snap-hooks and / or Carabiners.
Unintentional disengagement may
result in serious injury or death.

Fig.4

Base Plate



16.0" x 16.0" x 3/8" (407 x 407 x 10mm)