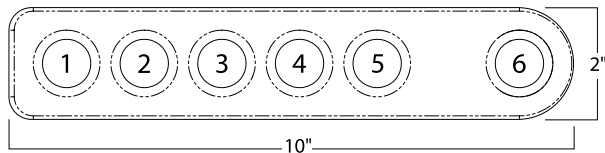


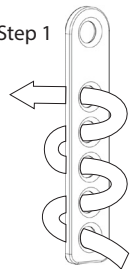
DIMENSIONS & INSTALLATION INSTRUCTIONS

Note:

Holes 1-5 are used for attaching compatible ropes. Hole 6 is used for attachment to suitable connectors.

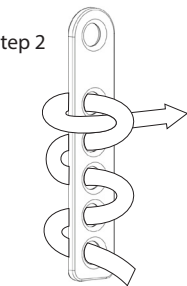


Step 1



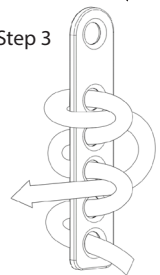
1. Feed approximately three feet of rope through hole 1 (noted above) and continue to weave rope through holes in numerical order until you reach hole 5.

Step 2



2. Wrap rope back around product and feed it through the loop of rope created in step 1 between holes 4 & 5.

Step 3



3. On same side of the product, feed rope through other loop located between holes 2 & 3.

4. Tighten rope around all holes and loops ensuring that there is no visible slack and at least one hand's length of rope remains after connection is completed.

5. Visually inspect connection using diagram marked on product.

PERFORMANCE:

Static Tensile Strength: 5,000-lbf (22kN)
Maximum Arrest Force: 1800-lbf (8kN)

REGULATORY COMPLIANCE:

ANSI Z359.18 Type A, ANSI A10.32-2012,
OSHA 1910, OSHA 1926 Subpart M

PRODUCT MATERIAL:

Anodized Aluminum

INSPECTION AND MAINTENANCE LOG

FRONTLINE
FALL PROTECTION

MODEL NUMBER: _____

DATE OF MANUFACTURE: _____

Date	Part Number	Comments	Inspector's Name

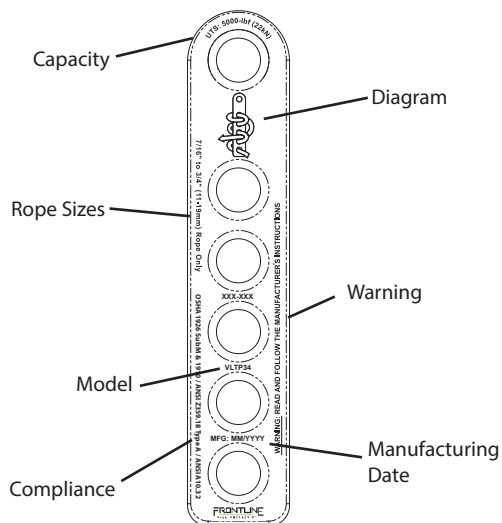
Inspection:

This product must be inspected by the user before each use and official periodic inspection must be made at least semi-annually. Inspection must be performed by a qualified person other than the intended user. If severe weather or conditions exist then inspections must be carried out more frequently. All inspection results must be logged in the space provided above.

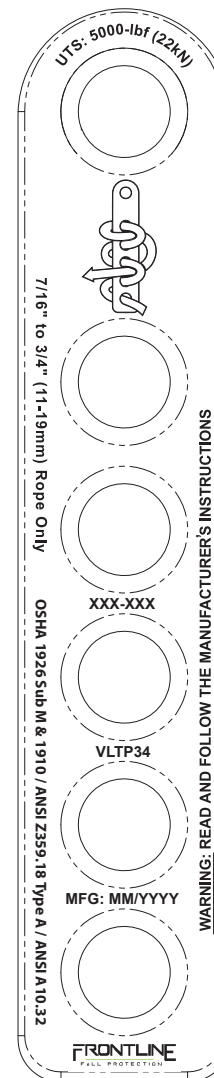
1. Inspect unit for visible signs of damage that could affect operation such as cracks, nicks, sharp edges or breaks. Clean product with damp cloth before inspection to reveal hairline cracks.
2. Verify product markings are still intact, visible and have not been tampered with. Refer to product drawing for this step.
3. Inspect for bent or distorted areas.
4. Look for visible signs of corrosion or heat damage such as discoloration of surface.
6. Confirm all inspections were performed on all surfaces of the product.

***If any damage that could affect the strength or operation of the device, or unsafe conditions are found, proper disposal is required. Anchorage connector must be rendered unusable and then properly discarded.**

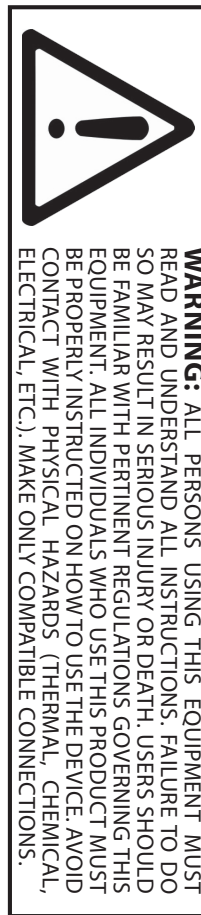
LABEL LOCATIONS



FRONTLINE
FALL PROTECTION



**Rope End
Termination Plate
5,000-lbf / 22kN
Model: VLTP34**



WARNING: ALL PERSONS USING THIS EQUIPMENT MUST READ AND UNDERSTAND ALL INSTRUCTIONS. FAILURE TO DO SO MAY RESULT IN SERIOUS INJURY OR DEATH. USERS SHOULD BE FAMILIAR WITH PERTINENT REGULATIONS GOVERNING THIS EQUIPMENT. ALL INDIVIDUALS WHO USE THIS PRODUCT MUST BE PROPERLY INSTRUCTED ON HOW TO USE THE DEVICE. AVOID CONTACT WITH PHYSICAL HAZARDS (THERMAL, CHEMICAL, ELECTRICAL, ETC.), MAKE ONLY COMPATIBLE CONNECTIONS.



Read This Instruction Manual Carefully Before Using This Equipment.



User Instructions must always be available to the user and are not to be removed except by the user of this equipment. For proper use, see supervisor, User Instructions, or contact the manufacturer. Compliant fall protection and emergency rescue systems help prevent serious injury during fall arrest. Users and purchasers of this equipment must read and understand the User Instructions provided for correct use and care of this product. All users of this equipment must understand the instructions, operation, limitations and consequences of improper use of this equipment and be properly trained prior to use per OSHA 29 CFR 1910.66 and 1926.503 or applicable local standards.

Misuse or failure to follow warnings and instructions may result in serious personal injury or death.

PURPOSE

The VLTP34 is a connector designed to function as an interface between a rope and a fall protection, work positioning, rope access, or rescue system for the purpose of coupling the rope to another connector. Any references to “connector” in this manual include, and apply to, the VLTP34.

USE REQUIREMENTS

1. A user must be of sound mind and body to properly and safely use this equipment in normal and emergency situations. Users must have a physician ensure they are clear of any medical conditions that may affect the proper and safe use of this equipment in normal and emergency situations.
2. Before using a personal fall arrest system, user must be trained in accordance with the requirements of OSHA 29 CFR 1910.66 in the safe use of the system and its components.
3. Use only with ANSI/OSHA compliant personal fall arrest or restraint systems. The anchorage must have the strength capable of supporting a static load, applied in the directions permitted by the system, of at least 5,000-lbf (22 kN) in the absence of certification.
4. The user shall be equipped with a means of limiting the maximum dynamic forces exerted on the user during the arrest of a fall to a maximum of 8 kN (1800-lbf).
5. Use of this product must be approved by an engineer or other qualified person to be compatible with any and all structural & operational characteristics of the selected installation location and system to be connected to this connector.
6. The anchorage connector must be inspected prior to each use for wear, damage, and other deterioration according to the “INSPECTION AND MAINTENANCE LOG” included in this manual. If the product is found to be defective, the connector must be immediately removed from service in accordance with the requirements of OSHA 29 CFR 1910.66 and 1926.502.

7. The connector should be positioned in such a way that minimizes the potential for falls and the potential fall distance during use. The complete fall protection system must be planned (including all components, calculating fall clearance, and swing fall) before using.
8. A rescue plan, and the means at hand to implement it, must be in place that provides the prompt rescue of users in the event of a fall, or assures that users are able to rescue themselves.
9. After a fall occurs the connector must be removed from service and destroyed immediately.

USE LIMITATIONS: The connector shall not be used outside its limitations, or for any purpose other than that for which it is intended.

1. Hole 6 of this connector (as noted in “DIMENSIONS AND INSTALLATION INSTRUCTIONS”) should only be connected to snaphooks or carabiners with automatically closing and locking gates.
2. This connector should only be used with Kernmantle rope between 7/16” and 3/4” (11mm-19mm) or 5/8” to 3/4” (16mm-19mm) three strand rope attached according to the “DIMENSIONS AN INSTALLATION INSTRUCTIONS”.
3. The connector is designed to for a single user, with a capacity up to 310 lbs (140 kg) including clothing, tools, etc.
4. The connector may only be used in tension with the rope and approved connector loaded in opposite directions.
5. The connector is designed to be used in temperatures ranging from -40°F to +130°F (-40°C to +54°C).
6. Do not expose the connector to chemicals or harsh solutions which may have a harmful effect. Contact the Manufacturer if you are unsure.
7. Do not alter or modify this product in anyway.
8. Caution must be taken when using any component of a fall protection, work positioning, rope access, or rescue system near moving machinery, electrical hazards, sharp edges, or abrasive surfaces, as contact may cause equipment failure, personal injury, or death.
9. Do not use/install equipment without proper training by a “competent person” as defined by OSHA 29 CFR 1926.32(f).
10. Do not remove the labeling from this product.
11. Additional requirements and limitations may apply depending on anchorage type and fastening option utilized for installation. All placements must be approved by an engineer or other qualified person.
12. This connector should not be used as part of a horizontal lifeline system that has not been designed and or approved to be used with 5,000-lbf connectors.
13. The connector should only be used for personal fall protection and not for lifting equipment.

COMPATIBILITY LIMITATIONS

This connector must only be coupled to compatible connectors and rope. OSHA 29 CFR 1926.502 prohibits snaphooks from being engaged to certain objects unless two requirements are met: it must be a locking type snaphook, and it must be “designed for” making such a connection. “Designed for” means that the manufacturer of the snaphook specifically designed the snaphook to be used to connect to the equipment listed. The following connections must be avoided, because they can result in rollout* when a nonlocking snaphook is used:

- Direct connection of a snaphook to horizontal lifeline.
- Two (or more) snaphooks connected to one D-ring.
- Two snaphooks connected to each other.
- A snaphook connected back on its integral lanyard.
- A snaphook connected to a webbing loop or webbing lanyard.
- Improper dimensions of the D-ring, rebar, or other connection point in relation to the snaphook dimensions that would allow the snaphook keeper to be depressed by a turning motion of the snaphook.

*Rollout: A process by which a snaphook or carabiner unintentionally disengages from another connector or object to which it is coupled. (ANSI Z359.1-2007)

MAINTENANCE, CLEANING, AND STORAGE

Cleaning periodically will prolong the life and proper functioning of the product. The frequency of the cleaning should be determined by inspection and by severity of the environment. Clean with a damp cloth using a mild soap if necessary. Do not use and corrosive chemicals when cleaning this product. To dry, use compressed air or a clean and dry cloth. When not in use, store connectors in a cool, dry, clean environment, out of direct sunlight, and free of corrosive or other degrading elements.

WARNING: It is essential to the safety of the end use that the seller of this device include all instructions pertaining to proper use, maintenance and inspection of the device in the language of the country in which the product is to be sold.

Product Warranty, Limited Remedy and Limitation of Liability WARRANTY: THE FOLLOWING IS MADE IN LIEU OF ALL WARRANTIES OR CONDITIONS, EXPRESS OR IMPLIED, INCLUDING THE IMPLIED WARRANTIES OR CONDITIONS OF MERCHANTABILITY OR FITNESS FOR A PARTICULAR PURPOSE. Equipment offered by Frontline Fall Protection is warranted against factory defects in workmanship and materials for a period of one year from date of purchase or first use by the original owner.

LIMITED REMEDY: Upon notice in writing, Frontline Fall Protection will repair or replace all defective items at Frontline Fall Protection’s sole discretion. Frontline Fall Protection reserves the right to require that the defective item be returned to its plant for inspection before determining the appropriate course action. Warranty does not cover equipment damage resulting from wear, abuse, damage in transit, failure to maintain the product or other damage beyond the control of Frontline Fall Protection. Frontline Fall Protection shall be the sole judge of product condition and warranty options. This warranty applies only to original purchaser and is the only warranty applicable to this product. Please contact Frontline Fall Protection technical service department for assistance.

LIMITATION OF LIABILITY: IN NO EVENT WILL FRONTLINE FALL PROTECTION BE LIABLE FOR ANY INDIRECT, INCIDENTAL, SPECIAL OR CONSEQUENTIAL DAMAGES INCLUDING, BUT NOT LIMITED TO LOSS OF PROFITS, IN ANY WAY RELATED TO THE PRODUCTS REGARDLESS OF THE LEGAL THEORY ASSERTED.

Frontline Fall Protection
2023 NW 84th AVE
Miami, FL 33122

info@frontlinefall.com / www.frontlinefall.com