

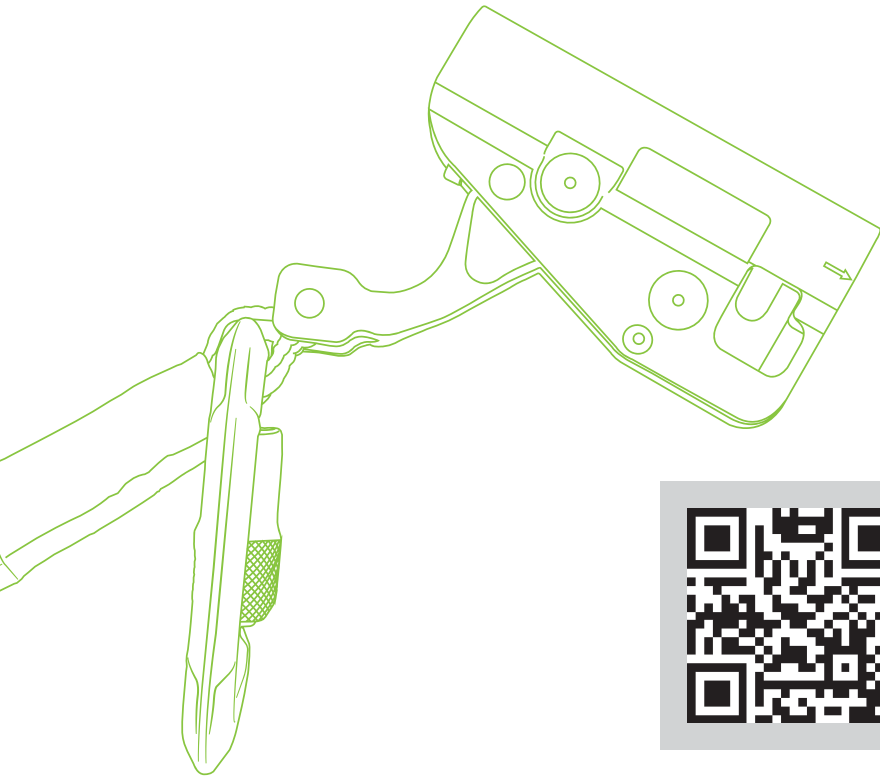
FRONTLINE®

FALL PROTECTION



LADDER SYSTEM GLIDER

INSTRUCTION MANUAL



THE INSTRUCTIONS APPLIES TO THE FOLLOWING MODELS:
GLC38.



BKFL 05



Do not skip this user manual. Read the instruction manual carefully before using the equipment. If failed in doing so it may cause serious Injury or Death.

1. Certification

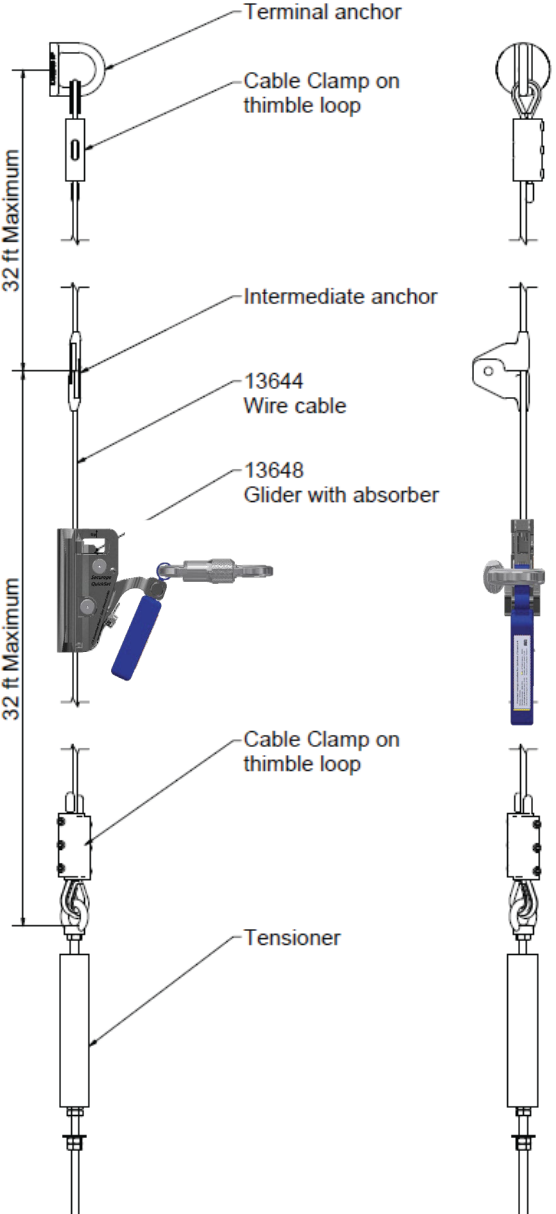
EU type examination certificate (The certificate can be downloaded at any time on our web portal).

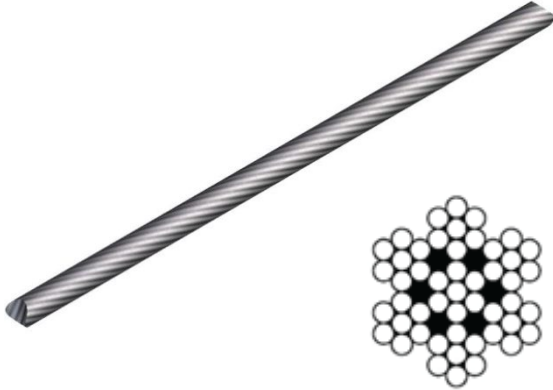
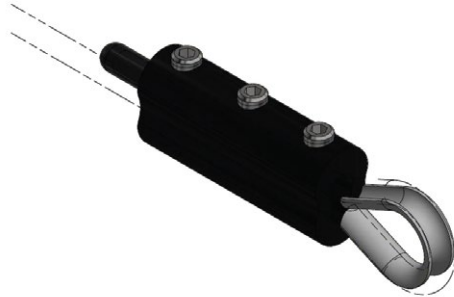

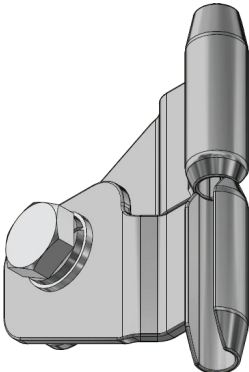
Standard	EN353-1 :2014+A1 :2017	
Certificate Number	ZP/B204/19	
Certification Date	2019-10-10	
Notified body	Code	0158
	Adress	DEKRA Testing and Certification GmbH Handwerkstr. 15, 70565 Stuttgart, Germany Certification authority: Dinnendahlstr. 9, 44809 Bochum, Germany

The whole system is proved by competent engineer under ANSI 14.3 and OSHA1910.29 Subpart D.



2. Equipments

Components	Description
 <p>Terminal anchor</p> <p>Cable Clamp on thimble loop</p> <p>32 ft Maximum</p> <p>Intermediate anchor</p> <p>13644 Wire cable</p> <p>13648 Glider with absorber</p> <p>32 ft Maximum</p> <p>Cable Clamp on thimble loop</p> <p>Tensioner</p> <p>32 ft Maximum</p>	<ul style="list-style-type: none"> • Lifeline without shock absorber • Fall arrester with shock absorber • Up to 4 users maximum

Component	Description
 A long, thin stainless steel cable is shown diagonally. Below it is a circular cross-section diagram of a 7x7 straining cable, showing seven outer strands arranged in a circle around a central strand.	<ul style="list-style-type: none">• Stainless steel Cable Ø5/16" straining 7x7
 A black cable clamp with three screws is shown attached to a metal thimble loop. The cable ends are visible on the left side.	<ul style="list-style-type: none">• Cable Clamp on thimble loop
 A metal anchor point with a circular base and a curved hook-like top. The base has a small hole and some text.	<ul style="list-style-type: none">• Secura anchor point
 A metal anchor component with a curved base and a vertical post. The post has a cylindrical cap and a hook-like end.	<ul style="list-style-type: none">• Intermediate anchor Securope QuickSet



- Securope QuickSet fall arrester with shock absorber



- Tensioner

3. Identification plate

It is mandatory to install the plate nearby the anchor line, in the zone where the users attach themselves.

The plate is generated by our web portal *Fallprotec Assistant* and can be printed on a printer with the sticker provided by Fallprotec (weather resistant). The commissioning date must appear on the plate.

Manufactured by:



FALLPROTEC SA
T: +352 26 55 09 30
F: +352 26 55 09 30 55
www.fallprotec.com

Installed by:




COMPANY NAME

DUMMY DEALER FALLPROTEC TEST

This is where the address comes nr. 1
Some Town
Luxembourg
+971 (6) 74 80 84 2
www.businessname.online

SecuRope EVO horizontal/inclined

EN795-C:2012
TS16415:2013



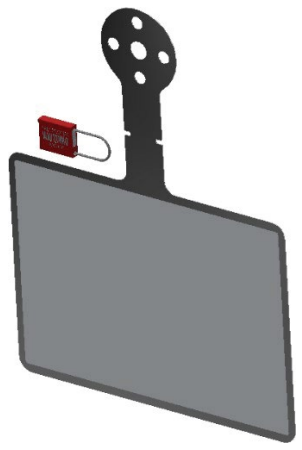
BEYOND THIS AREA WEARING A HARNESS AND SECURED BY A FALL ARREST SYSTEM ARE MANDATORY

Company: Gecko Tech
Location: Project1
Number of users: 1 x max. 100 kg
Serial #: 123453
Installation date: 2019-02-12





- ❶ Manufacturer informations and a QR code to get direct access to the informations related to the installation.
- ❷ Equipment type and applied standards.
- ❸ Logo, name and installer address.
- ❹ Symbols indicating it is mandatory to use a fall arrest harness with an energy absorbing system according to EN355/ANSI Z359.13
- ❺ Maximal number of users and their weight.
- ❻ Installation place informations.
- ❼ Commissioning date
- ❽ Symbol indicating it is mandatory to read the user manual first.
- ❾ Unique serial number.



The sticker will be fixed on a plate, which can be manually folded depending the installation environment.

A self-locking Tag including an unique serial number must also be installed.

4. In case of fall

Maximal load transmitted to the host structure	1320lbs
Maximal deformation	4,7" (Deformation due to shock absorber)



Consult with your doctor if there is reason to doubt your fitness to safely absorb the shock from a fall arrest, Age, fitness, and health conditions can seriously affect a worker's ability to withstand falls. Pregnant women and minors must not use any FRONTLINE Fall Protection equipment.

5. Anchor device use

Maximal number of users for lifeline	4
--------------------------------------	---



Each worker must keep a min. distance of 20' to the next person when climbing up & down the ladder.

Each worker must have all its tools and equipment properly secured/tied off when climbing the ladder. Any dropped object can Injure or Kill the below end user.

1	Insert the mobile anchorage device on the fall arrest support according to the marking, arrow to the top.
2	The lanyard carabiner must be fixed directly to the anchor point of the mobile anchorage device.
3	The fall arrest system should operate smoothly as one moves along the system. The mobility of the fall arrest is optimal when one goes up and down with regularity. - Ascent, the user drives the fall arrest. - In descent, the fall arrester slides freely under the effect of a slight traction that one obtains by the natural position of the body.
4	It is essential for safety that the device is always correctly positioned and that the work is done in such a way as to minimize the risk of falls and the height of the fall.
5	The user will take care to be in a safe situation before detaching from the anchoring device.
6	In case the user detects slack in the harness, he must stop any operation and tighten it from a secure position.

5.1. Assembly and dismantling of the fall arrest system



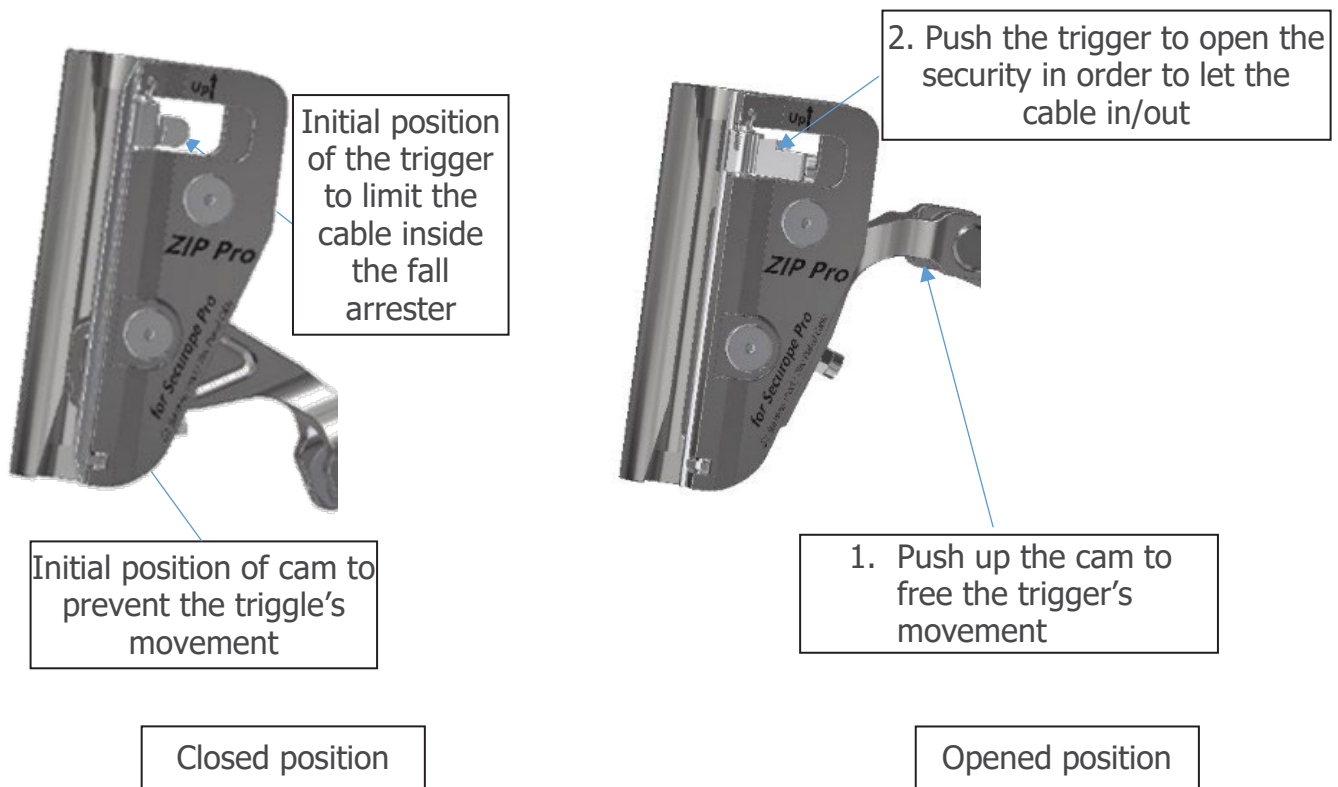
If the point of entry / exit of the line is a place where there is a risk of falling, the user must make sure to be safe by another protection system before the assembly / disassembly of the fall arrest.

Dismantling: Rotate the cam upwards, push the trigger to open the security, take the Securope QuickSet out of the line.

Assembly: Rotate the cam upwards and introduce the Securope QuickSet fall arrester on the wire cable, the security will automatically opened by pushing the Securope QuickSet on the wire cable.



The QuickSet glider is not equipped with an anti-inversion mechanism. Please verify orientation of the VLL glider ("Up Arrow" pointing upwards) each time before connecting to the VLL glider.



5.2. Rigid anchor line installation recommendations

The rigid anchor line must be installed vertically.

An intermediate anchor must be installed every 32', and every 26' if the height is higher than 164'.

6. Instructions and informations

6.1. Storage and maintenance

The fall arrester and the VLL glider support must be kept in a perfect state of cleanliness.

- Use a clean cloth and a specific cleaner for aluminium and stainless steel.
- The energy absorber of the fall arrester can be cleaned with soapy water and dried in the open air away from the sun.
- The use of chemicals, corrosives and solvents can be dangerous.

If the equipment is likely to come into contact with chemicals, consult us and give us the exact names of the chemicals involved.



6.2. Limits of use

- Use exclusively for fall arrest application in workplace applications. It is not designed for leisure applications or work positioning applications.
- The total weight of the user, including tools and equipment, must not exceed 330lbs.
- The total weight of the user, tools and equipment not included, must not be less than 110lbs.
- If a risk of fall exists at the entry or exit of the fall arrest system, the end user must secure himself with an additional fall arrest anchor & a lanyard. The end user must be connected to the anchorage system, before connecting / disconnecting the vertical fall arrest glider.
- The fall arreter glider must not be used as a work positioning system, in which case a separate restraint system must be used.
- Handling of the fall arrester while climbing or descending may interfere with the braking mechanism. If necessary, handle the fall arrester by its connector, never take in hand the body of the fall arrester in service.
- The user is not protected against the impact on the ground during the first 6'. Additional precautions must be taken when climbing or descending.
- In case of emergency the belay system can be used to guide the descent to the ground of the person.
- The fall arresters including a rigid anchor line made of stainless steel should not be installed in a highly corrosive atmosphere (e.g. above a swimming pool) because of the risk of non-visible stress corrosion cracking, unless specific control measures are in place or compatibility is established.

6.3. Period of life

- All fixed components of the VLL are made of stainless steel and aluminium with high resistance to atmospheric agents.
- The fall arrester is equipped with a textile energy absorber and has a lifespan of 10 years if it is stored away from UV and weather. It will then be returned to the manufacturer for general inspection and renewal if necessary.

6.4. Packaging and transport

- The user will use the original packaging for the transport of the fall arrest device (the contact address will be marked on the packaging)
- The fall arrester must be stored in its original packaging in a place protected from light and moisture.

6.5. Marking

A signage label is installed on the ladder, in the area where users are clinging to the belay system.

The fall arrest system receives the following marking:

- ① Manufacturing date (Month/Year) serve as batch number
- ② Brand: FRONTLINE
- ③ Number of the applicable standard: OSHA1910.29 Subpart D and ANSI A14.3
- ④ Model: Securope QuickSet
- ⑤ Number of the applicable standard and the date of application of the standard: EN353-1: 2014 +A1:2017
- ⑥ The CE marking (5mm) followed by the number of the notified body involved in the manufacturing follow-up
- ⑦ An icon indicating that it is necessary to read this leaflet before use
- ⑧ User and weight limitation
- ⑨ Up arrow for correct orientation during use



6.6. Standard

EPI is designed and manufactured according to the harmonized standard EN353-1: 2014 +A1:2017 and proved by competent engineer according to OSHA1910.29 Subpart D and ANSI A14.3



7. Prohibited use

- Exceed the maximal number of users;
- Any use other than that intended by the manufacturer is prohibited ;
- The Securope QuickSet fall arrester is intended for a single user, who is responsible for it. Use by more than one person is prohibited ;
- If the fall clearance is not sufficient ;
- The use of the system when the temperature is below -22°F (-30°C);
- In the event of frost or risk of frost, thunderstorms or any other potentially dangerous exceptional weather conditions ;
- When there is a risk of electric shock ;
- The equipment stored in an environment that is corrosive/incompatible with the gliders textile absorber & spring mechanism.
- The equipment with obvious damage ;
- It is strictly forbidden to use the equipment beyond the limits specified in this manual or in any situation other than that for which it is intended ;
- The use of an additional safety element in combination with the equipment may affect safety ;
- If the fall arrester is equipped with an energy absorber that is deployed or has an extra length of more than 4";
- If any doubt arise about its condition for safe use;
- If the equipment have been used to arrest a fall and not used again until confirmed in writing by a competent person;
- If the pre-tension of 110 lbs has disappeared or the cable is soft;
- The use of another energy absorber than the original one ;
- Use the cable as grounding of welding machines.



8. Preliminary checks

It is mandatory to check the following before using the anchorage device :

- The user of the lifeline must be in good physical condition, and not prone to vertigo or giddiness.
- The user must have received adequate training for the following:
 - Use of the fall protection equipment,
 - Working with the lifelines,
 - Use of the rescue equipment in the event of fall.
- A minimum of two people is required to work together on the lifeline, so that each can assist the other in the event of an incident.
- A rescue plan must be in place to evacuate the person who fell within 15 minutes. The rescue material must be easily accessible and be located in the vicinity from the lifeline.
- Each user must be equipped with :
 - A suitable harness with two anchoring points, one at the back and one at the chest , in conformity with the EN 361/ANSI Z359.1 standard,
 - One adjustable harness,
 - The chest anchor point is the preferred point for anchoring the harness, the dorsal anchoring point being used for rescue operations,
 - Two karabiners twist lock type in zinc plated steel, according to EN 362/ANSI Z359.12/CSA Z259.12

Any other combination of components can affect the correct functioning of the system and is consequently forbidden.
- On arrival in the work area, or whenever the user attaches himself to the lifeline, he is required to check :
 - The anchorage device, harness and lanyard are in good conditions;
 - The Body harness should be set correctly, to ensure a perfect fit;
 - When the safety harness becomes loose, it must has to be readjusted from a secured position;
 - There is no obstacle under the walkway that could reduce the fall clearance;
 - If there are tilting end stops, they must be tested and must work properly ;
 - The carabiner should close automatically ;
 - The safety bolt of the carabiner must function automatically ;
 - There are no deformed components.
- The system must be immediately put out of service if the user notices one or more anomalies and the failing components have to be replaced by a competent person.



9. Warnings

- In case the product is sold to a country different to the first destination country, reseller must provide user, installer and maintenance manuals and instructions for inspections written in the language of the country where the product will be used.
- It is needed to provide also the information specific to the product.
- Marking of the equipment must be always visible.
- Any modification of the system or equipment cannot be made without prior written authorization of FRONTLINE.

10. Inspection et periodic examinations

Regular periodic reviews are required strictly following the following recommendations. The safety of the user is related to the maintenance of efficiency and resistance of the equipment. The annual inspection must be recorded in the Fallprotec Assistance web portal in order to ensure the follow-up of the equipment.

- The installation must be subject to an annual visual and functional inspection by a competent person (who, by reason of his training and professional experience, is in possession of sufficient knowledge in the field of safety and evacuation devices, as well as applicable rules and guidelines for assessing the conditions of safety at work and the use of safety and evacuation devices).
- More frequent checks may be planned depending on the intensity of use and the conditions of the system environment.
- The lifeline will be inspected by a competent person once a year and after a fall. The safety of the user is linked to the maintenance of the efficacy of the system and the resistance of the equipment.
- Check that the marking engraved on the fall arrester is legible.
- The fall arrester and belay system will be cleaned with a specific cleaner for stainless steel and aluminium.
- The energy absorber of the fall arrester can be cleaned with soapy water and dried in the open air away from the sun, the original heat shrink tubing will be replaced if necessary.
- Any modification of the equipment or any addition to the equipment can not be done without the prior written consent of FRONTLINE.

11. Maintenance

If the anchorage device is used in a dusty environment, mobile anchor devices need to be cleaned with soapy water. The lifeline is cleaned with soapy water or solvent if the environment is not flammable.

Mobile anchor devices are stored in a dry place.

12. Identification sheet

An identification sheet must accompany the product over its using time.

Identification sheet

Equipment type :

Brand : FRONTLINE

Identification of the equipment :

Manufacturing date is written on the mobile anchorage devices: Month/Year (MM/AA)

Purchasing date :

Date of manufacturing :

Date of first use :

Periodicity of inspections : once a year

Period of life estimated :

Date 1st inspection	Type of inspection/reparation	Inspector's name and signature	Date of next inspection
After 1 year of use	<p>Belay system Cleaning, remove deposits that could hinder the free flow of fall arrest.</p> <p>Fall arrest Lubrication of the axis of rotation of the locking cam with a spray; the anchor ring must rotate freely. Lubrication of the flanks of the locking cam. Checking the locking of the fall arrest device on the wire cable, the fall arrester must automatically lock on the rail under the action of the spring.</p>		Periodicity once a year
Dates	Noticeable defects - relevant information	Name and signature	Forecast dates

NOTE : It is the responsibility of the user to keep the identification sheet up to date.