

RC12 Concrete 12" Roof Anchor

Design Specifications

High strength and reliable

Great for exterior or indoor use and all the different weather conditions

Quality welding and upmost compliance

Minimum Breaking Strength	5,000-lbf/22kN
Application	Concrete Structures
Post Height	12"
User Maximum Capacity	130-420 lbs
Material	ASTM rated steel
Finish	ASTM rated hot dip galvanized

Relevant Standars

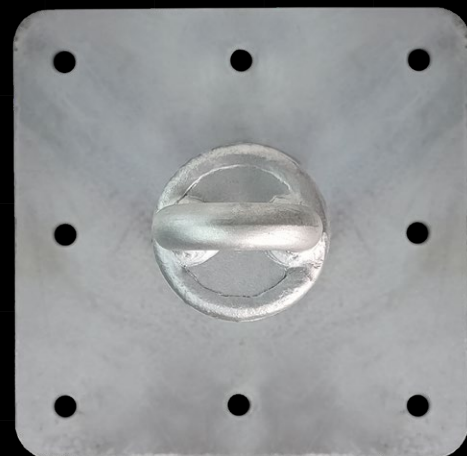
OSHA 1926

1910

ANSI Z359.18

A10.32

Tested by an Independent 3rd Party Lab accredited to ISO/IEC Standard 17025



WARNINGS:

- Do not skip user instructions supplied with this product.
- Alteration or misuse of this product or failure to follow instructions may lead to serious injury or even death.