

Standing Seam Anchor

Standing Seam Anchor

Another SAS exclusive design, our No.1207 Standing Seam Anchor is available in 3 lightweight aluminum base plate sizes to fit panel seam widths of 8-1/2" up to 26-1/2" wide. 3rd party tested to withstand a 5,000lb force in the specified load direction and installs with only 4 bolts and is compatible with a wide range of panel widths and profiles using our No.1208 and No.8511 RCT seam clamps.



Specifications

Permanent or Temporary Anchor

Min. Tensile Strength: 5,000lb

Base Plate: 3/8" Aluminum plate

No.1208 Seam Clamps:

1/4" Hot Dip Galvanized Steel

Clamp Bolts: 3/4"-10 grade 5

Frame i.d.: Stamped date of mfg.

User Specifications

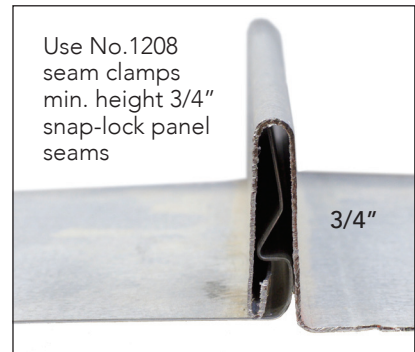
Single person 340lb

Single/Multiple person HLL

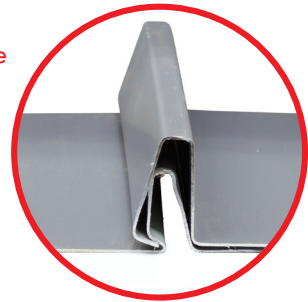
Compliance

ANSI Z359.1/OSHA 1926.502

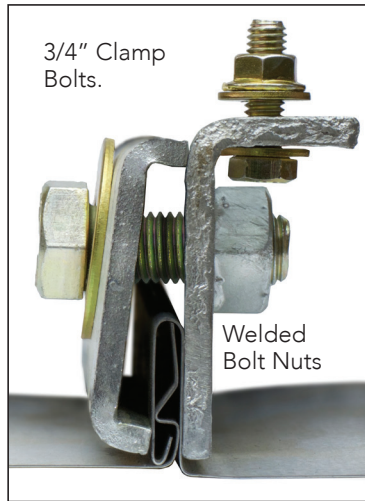
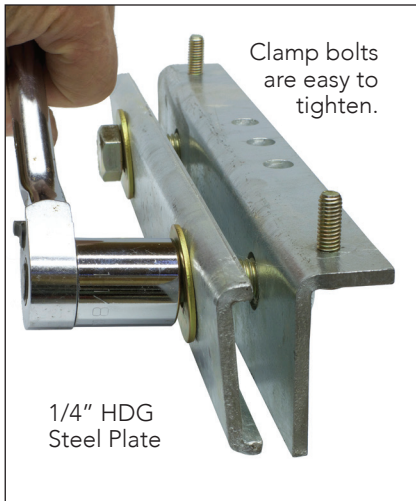
Seam Compatibility



Do not use with low profile snap-lock seams



No.1208-SSC Seam Clamp



No.1207 Complete Kits

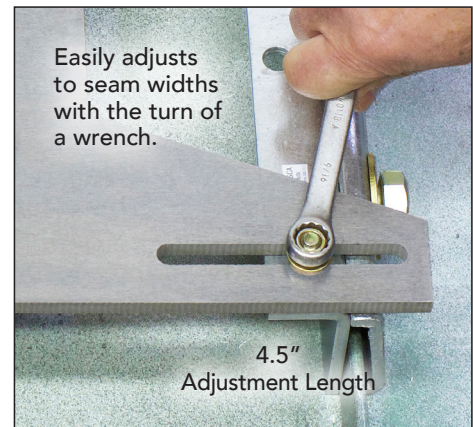
Part No.	wt/lb	SSC Clamps	PPE Anchor
1207C-12x18	22.5		
1207C-14x22	24.5	2pc No.1208 HDG	1pc No.1028* Swivel-D
1207C-18x24	26.5		

*Includes 5/8"x2-1/4 or 2-3/4" attachment bolt

Components Only

No.1207 Base Plate		Seam Clamp Otions	
Part No.	wt/lb	2pc SSC	4pc RCT
1207-12x18	5.5	No.1208	No.8511-4
1207-14x22	7.5	HDG	Aluminum
1207-18x24	9.5	wt/15.9lb	wt/2lbs

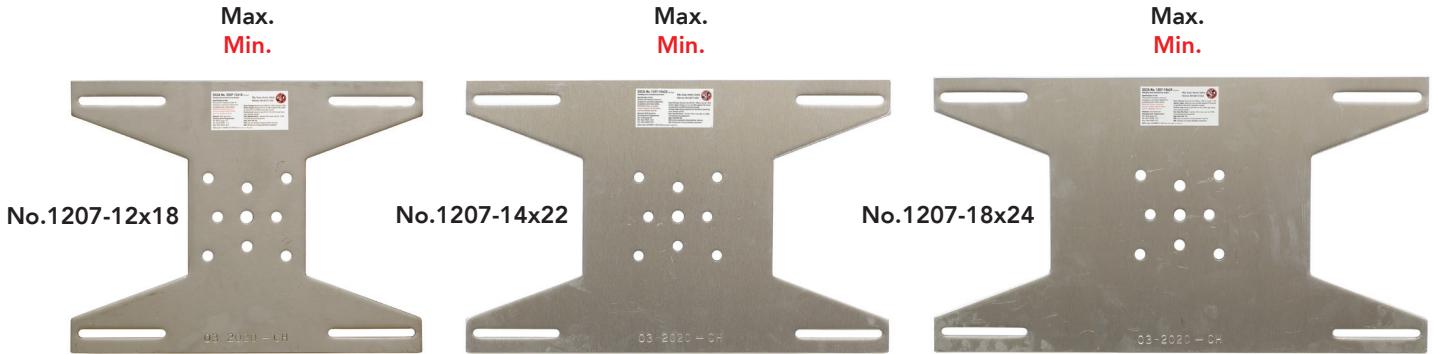
Panel Width Adjustment



Standing Seam Anchor

Panel Seam Width Adjustment

No.1208-SSC and No.8511 RCT clamps provide a wide range of metal panel seam widths. Measure the panel seam width to confirm if the clamp type and clamp position are compatible. SSC clamps standard position will fit most seam widths.

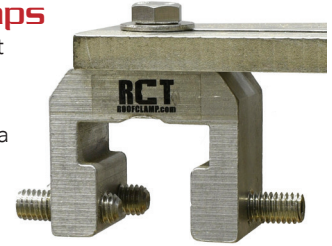


Panel Seam Width Compatibility / Inches

Base Plate Model	12x18		14x22		18x24	
	Min.	Max.	Min.	Max.	Min.	Max.
SSC Standard	10-1/2"	18-1/2"	14-1/2"	23.0"	18.0"	26-1/2"
SSC Inverted	8-1/2"	17.0"	12-1/2"	20-3/4"	16.0"	24-1/4"
RCT Clamp						

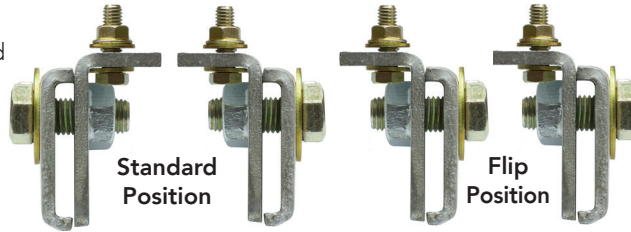
No.8511 RCT Clamps

Designed to attach to most seam profiles. Requires 4 clamps. Each clamp is attached to the seam w/3ea 3/8" sst hex socket screws. Visit snoblox-snojax.com for seam compatibility

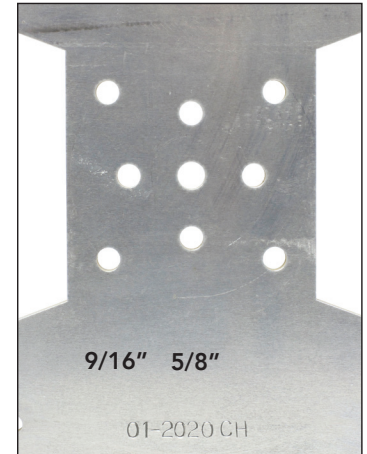


Clamp Positions

The No.1208 seam clamp standard position allows clamp bolts to be tightened with the base plate attached. Seam widths less than 11-1/2" are attached by flipping one of the clamps and installing it first. Consult Manual.

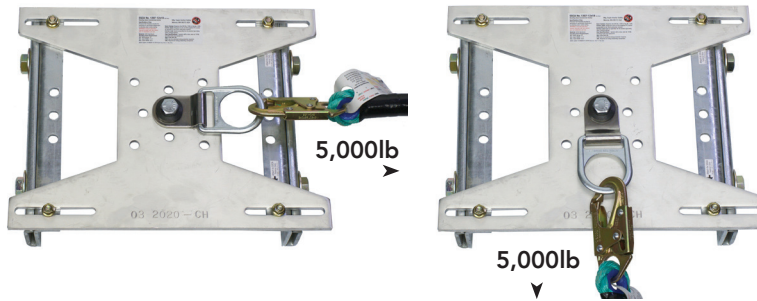


Base Plate Bolt Holes



Minimum Tensile Strength

Request Intertek *SSCA/RCT seam clamp report 10/2020
*Standing Seam Commercial Anchor



Compatible SAS Anchors

- SAS 6"x6" D-Plate Anchors
- CRA 1031-W
- CRA-1031-P
- No.1029 D-ShakL

