

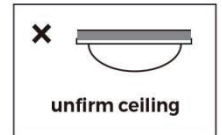
Wifi-Led Fixture User Manual

To Customer:

Thanks For Purchasing Our Products, Please Read The Manual Carefully Before Install The Fixtures.

Warning:

Install According To The Manual And Don't Disassemble Or Modify The Fixture To Avoid Electric Shock Or Destroying The Fixture



Attention:

1. Don't Install The Fixture On Such Places As Right Pictures.
2. Operating Voltage: 85v-265v
3. Don't Use The Fixture In High Temperature Or Damp Places.
4. Professional Electrician Is Needed For Safety, Maintaining And Checking Fixture.
5. Turn Off The Power Immediately If There Are Some Abnormality For The Fixture ,Then Contact With The Sales.
6. Connecting To The App Requires a 2.4ghz Wireless Router

Parts And Installation Instruction.

Attention: To Disconnect The Power Before Installation To Escape Electric Shock.

1. Mounting Clipst

Surface Mounting:

To Use Screw In Style Clips, Screw The Clips Into a Suitable Surface Using The Included Hardware, And Clip The Fixture Into Place

Hanging Mounting:

To Use Hook Style Hanging Clips, Install The Hook-Style Hanger Clips Onto Fixture

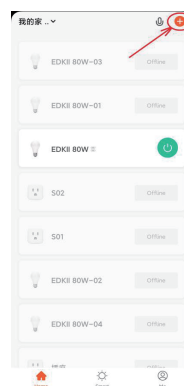
2. Plug The Power Cord Into The Fixture Housing When Single-Fixture Used, When Multi-Fixtures Used, You Can Connect The Fixtures With Connection.

3. Connect App

①: Please Scan Or As Below To Down "Smart Life" App .



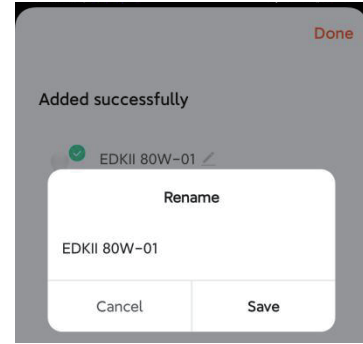
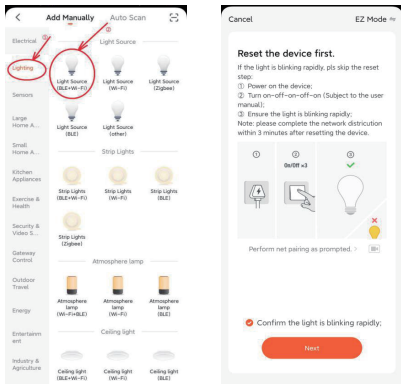
②: Open The App , Click "+" On Right Of Corner To Set .



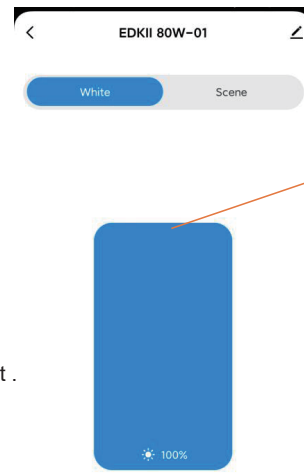
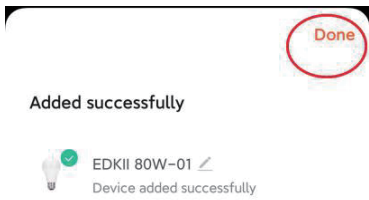
③: Select Lighting>Lighting Source (Ble+Wi-Fi) ;

④: Make Sure Turn Off Device Over 10 Mins,Then Setting As Description

⑤: Accept“Confirm The Light Is Blinking Rapidly”, Click Next;

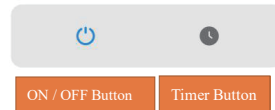
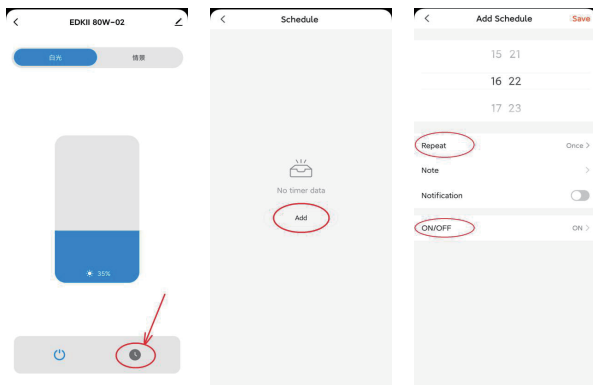


⑥: Connect Wifi Go Next Step . After Adding Device Successfully , Could Revise Device Name Accordingly , And Click “Done” On Right Of Corner .



Up and down Adjustable brightness

⑦: Setting Timer : Click Timer Button, Add Schedule According To Your Requirement .



⑧: Setting Group

Click Right Of Corner , Select “Create Group” ,Select Device Listed On Page Accordingly . And “ Save “. Then You Could Control a Group Easily .

