

Contemporary III

Control your adjustable bed with
your smart device using the
remote mobile app

Android App: [View on Google Play](#)

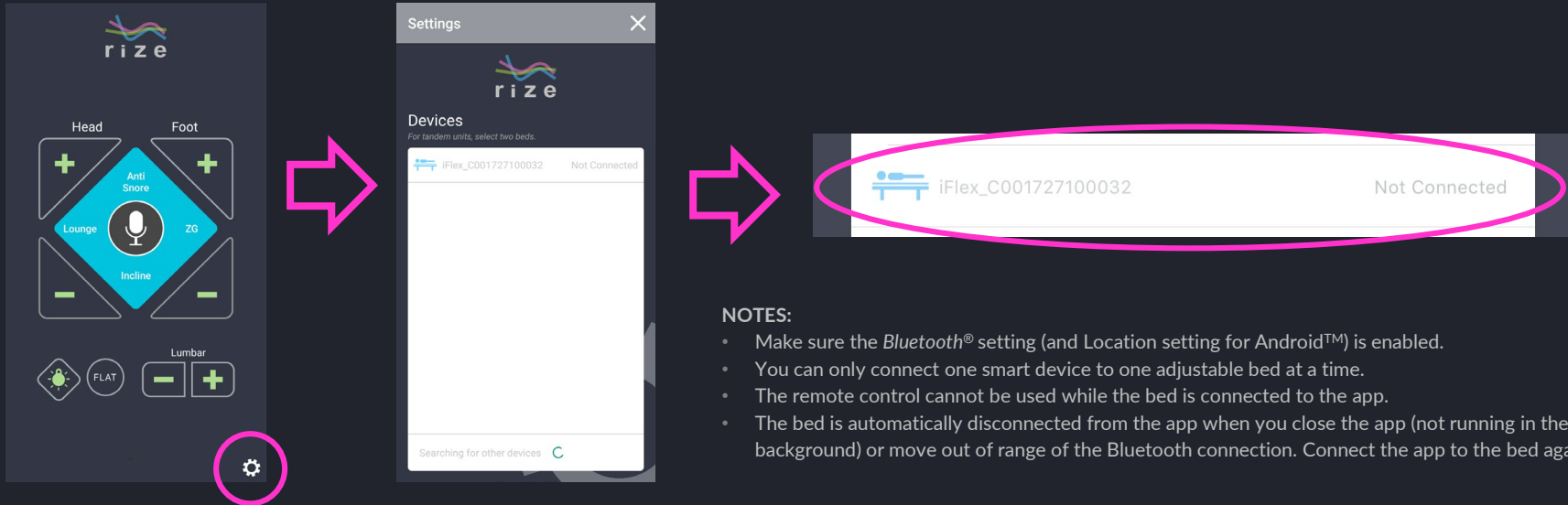
iOS App: [View on App Store](#)

Connecting to your adjustable bed

Launch the app, and tap the gear icon to go to the Settings screen.

From the Devices list, select your adjustable bed. The bed is listed as *iFlex_[bed serial number]*. Your bed's serial number can be found on the manual and on the box.

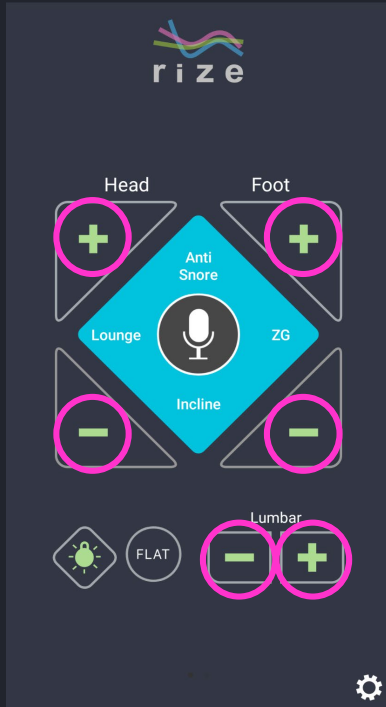
Disconnect the bed from the app by tapping the connected bed again.



NOTES:

- Make sure the *Bluetooth*® setting (and Location setting for Android™) is enabled.
- You can only connect one smart device to one adjustable bed at a time.
- The remote control cannot be used while the bed is connected to the app.
- The bed is automatically disconnected from the app when you close the app (not running in the background) or move out of range of the Bluetooth connection. Connect the app to the bed again.

Controlling the head, lumbar, or foot sections

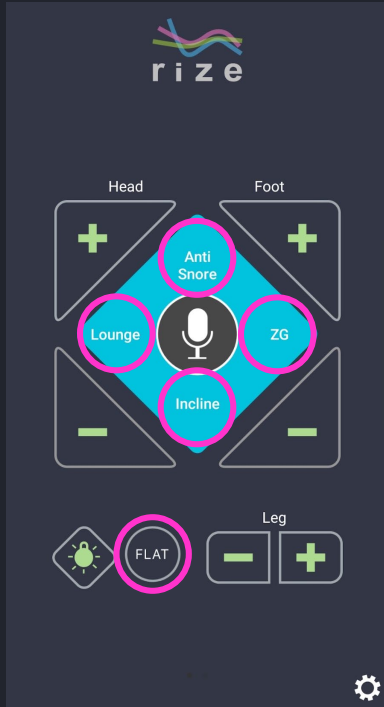


Tap and hold the up (+) or down (-) button for each section of your bed to raise or lower them.

You can also control them through voice commands by tapping the Mic button.

NOTE: The Voice Commands List can be found on page 7.

Controlling the bed presets



To activate your bed's presets, tap the button of the preset you want to use.

To customize the presets, adjust your bed frame to the desired position then tap and hold the preset button for 3 seconds.

NOTES:

- You can only customize the Lounge, Incline, and Zero Gravity presets.
- To restore the preset positions back to factory settings, disconnect the bed from the app, and then reset the system using the remote control. For more information, see the "Resetting your system" topic on your Owner's Manual.

You can also activate your presets through voice commands by tapping the Mic button.

NOTE: The Voice Commands List can be found on page 7.

Controlling the underbed lights



To turn on your underbed lights, tap the button with the Light icon.

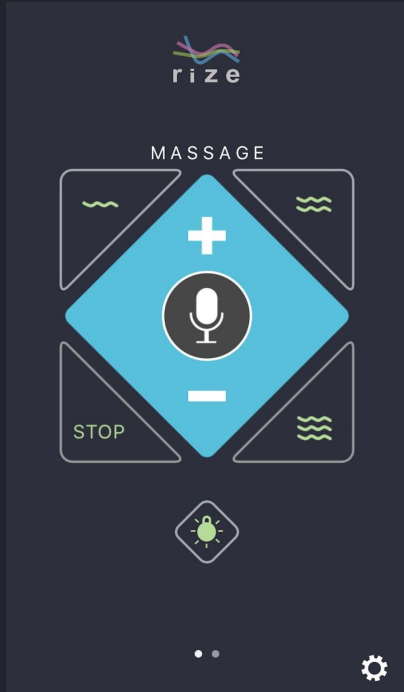
To toggle through the underbed light colors, tap the button again when your light is on. You can choose from 7 colors.

To turn off your underbed lights, tap and hold the button for 2 seconds.

You can also activate the underbed lights through voice commands by tapping the Mic button.

NOTE: The Voice Commands List can be found on page 7.

Controlling the message function



To activate the message function and the message waves, tap any of the message buttons.

To increase or decrease the message intensity, tap or hold down the message up (+) or message down (-) button.

You can also control them through voice commands by tapping the Mic button.

NOTE: The Voice Commands list can be found on page 7.

Controlling two adjustable beds in tandem

From the Settings screen, select your bed to connect to it.

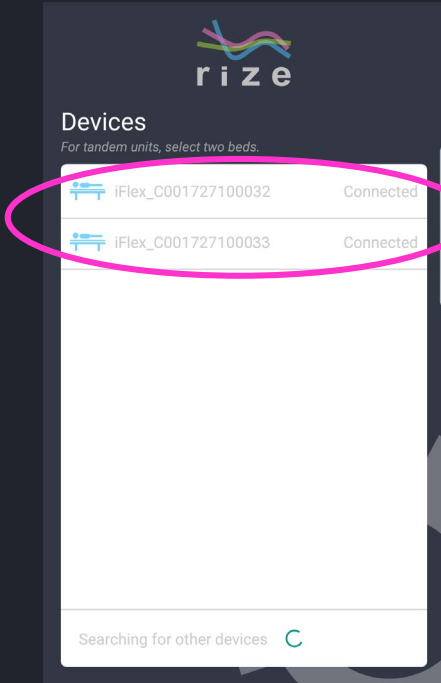
NOTE: The bed is listed as *iFlex_[bed serial number]*. Your bed's serial number can be found on the manual and on the box.

To connect and control a second adjustable bed, select another bed from the Devices list.

NOTE: If your second bed is not on the Devices list, make sure it is plugged to a working electrical outlet.

Once both beds are connected, the app can now operate both beds in tandem.

To disconnect the second bed, tap the bed name on the list again.





Voice Command List

Head Up – Raises the head section.

Head Down – Lowers the head section.

Lumbar Up – Raises the lumbar section.

Lumbar Down – Lowers the lumbar section.

Foot Up – Raises the foot section.

Foot Down – Lowers the foot section.

Stop – Stops all lift activities.

Lounge – Adjusts the bed into the Lounge preset position.

Zero – Adjusts the bed into the Zero Gravity preset position.

Snore – Adjusts the bed into the Anti-Snore preset position.

Flat – Adjusts the bed into a flat position.

Massage On - Turns massage on with message wave 1.

Wave One - Starts message wave 1.

Wave Two - Starts message wave 2.

Wave Three - Starts message wave 3.

Massage Off - Turns message motors off.

Light On / Lights On - Activates the under bed light.

Toggle Lights - Toggles thru the underbed light colors.

Light Off / Lights Off - Turns the under bed light off.



FOR ASSISTANCE, PLEASE CALL OUR
CUSTOMER SERVICE TOLL FREE NUMBER

1-843-800-8372

POWERED BY CUSTOMATIC® TECHNOLOGIES™

All product names, brands, and trademarks are the property of their respective owners.