



Owner's manual

Clarity II - Enhanced

Adjustable bed



#4002s



Table of contents

Safety precautions	4
Parts list	5
Setup guide	6
Optional headboard brackets	7
Remote control guide	8
Mobile app guide	11
Warranty & registration	12

SERIAL NUMBER: _____

(Place your serial number here for ready reference)

Safety precautions

Attention

READ THE FOLLOWING INFORMATION BEFORE USING THIS PRODUCT. USE OF A SURGE PROTECTOR (NOT INCLUDED) IS RECOMMENDED.



Electrical safety

Do not open or tamper with the transformer, control box, motors, or remote control (with the exception of battery compartments).

Small children and pets warning

Immediately dispose of all packing materials as it can smother small children and pets. Do not allow any persons or pets under the bed. Children should not operate the bed without adult supervision.

Hospital or convalescent use

This adjustable bed was designed and engineered for a lifestyle of in-home comfort and are not intended for hospital use or for a bed-ridden patient on an extended recovery. This bed is not equipped with bars to help patients get safely in and out of bed and are not intended to be used around tent-type oxygen therapy or explosive gases.

Health warning

Please consult your physician before use if you have any health conditions you are concerned about, as the motion may aggravate some conditions. Caution is especially advised for those with pacemakers, since the vibrating motion, especially by the massage, may cause the pacemaker to sense activity.

Product ratings

The bed lift motors are not designed for continuous use of more than 2 minutes in an 18-minute period, or approximately 10% duty cycle. Any attempt to circumvent or exceed this rating will shorten the life expectancy of the product.

Weight limit

The limitation for the bed is 850 lb. The bed will structurally support this weight provided it is evenly distributed across the head and foot sections. This product is not designed to support or lift this amount in the head or foot section alone. Exceeding this weight restriction could damage the bed and/or cause injury. Enter or exit the bed in a flat position and do not sit on the head or foot sections while in the raised position.

Noise warning

It is normal for the raising and lowering features and the massage function on this bed to emit a minimal humming sound during operation. The level of sound the bed emits is directly related to the environment. In a room with hardwood floors

a vibrating noise can be noticeable. To reduce the resonance, place a piece of carpet or rubber caster cups under the legs. The rubber caster cups also prevent the bed from sliding when located on smooth or hard surface flooring.

Cord maintenance

Always unplug the base from the electrical outlet before cleaning or servicing the base. Keep the cord away from heated surfaces. For indoor use only. If the cord or plug is damaged or dropped in water, discontinue use of the bed base and contact qualified service personnel for examination and repair. Make sure the base is in a flat position before unplugging from the power source.

Emergency battery backup

This foundation is equipped with a battery backup that will assist in returning the base to a flat position during a power outage. To use this feature, simply install two 9 volt batteries into the battery compartment of the transformer. Use the reset button on the control box (black box attached to bottom of bed) to return the base to a flat position. Please do not use batteries for normal operation of the base.

Grounding safety

Failure to use a properly grounded outlet will compromise the bed's safety. Using adapters is not recommended unless the outlet is checked by a qualified electrician to ensure that the adapter is properly grounded.



Warranty warning

This bed is specifically designed to require no regular maintenance. Opening or tampering with the control box, motors, or hand controls (except the battery compartment) will void the warranty. Only an authorized repair technician may conduct repairs or parts replacements on your Rize adjustable bed. Unauthorized modifications to this product could void your warranty.

Moving after installation

Do not place the adjustable base vertically on its head or foot sections as this may cause injury or damage the base. Due to the heavy weight, two people should always be used to move the bed.



FOR OPTIMAL SAFETY, YOUR ADJUSTABLE BED SHOULD BE PLUGGED INTO A SURGE PROTECTOR (not included).

SAVE THESE INSTRUCTIONS. Proper operation of your adjustable bed is necessary to ensure the long life of the bed. The manufacturer has tested and inspected this product prior to shipment.

Parts list

Check the adjustable bed carton and verify that all items on the parts list are included before throwing the packaging away.



Remote control (1)



Mattress retainer bar (1)*



Input power cord and power supply (1)



8" post bed legs (8)



4" post bed legs (8)



3" post bed legs (8)



Bed leg strap (1) **



AAA batteries (3)

* King size beds come with two mattress retainer bars.

**Included in Twin XL and Split California King bases. Used when connecting two bases together.

Installation guide

Setting up your adjustable bed

For all sizes.

- 1 With two people, carefully lift the bed base out of the shipping carton and place it flat on the floor with the top side facing downward. Verify that all parts are available before discarding any packing materials.
- 2 Unfold the base. Keep the top side facing down.
- 3 Plug the input power cord into the power supply.
- 4 Connect the power supply to the control box, which is the black box attached to the bottom of the bed.
- 5 Assemble the legs using any combination of the 3", 4", and 8" leg sections to choose your bed's desired height. All legs must be the same height.
- 6 Attach the legs to the threaded holes in each corner of the frame. Tighten until secure, but do not over-tighten.
- 7 Next, the remote control will need to be paired to the bed. Put the included AAA batteries into the battery compartment on the remote control.
- 8 Find the pairing button on the control box on the underside of the bed. Plug the power cord into the wall outlet, and then press and hold the pairing button for three seconds. A light will flash to indicate the bed is ready for pairing. Press any button on the remote control (except the flashlight button). A beep will sound that indicates the remote has been paired with the base.
- 9 Unplug the bed from the power outlet. With two people, turn the bed over so that the legs are on the floor. Do not rest the bed on the legs while flipping it over, as that can cause damage.
- 10 Make sure the cords do not interfere with operation of the bed. Plug the power cord into a grounded electrical outlet. A surge protector (not included) is recommended. Verify that the bed is operational by using each function on the remote. Then return the bed to a flat position.
- 11 Insert the mattress retainer bar into the two holes at the foot end of the bed. Place your mattress and bedding on top. Your adjustable bed is now ready to use.



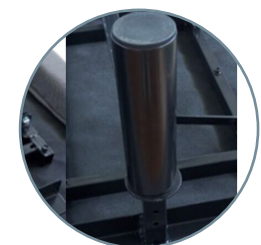
Input power cord and power supply



Connect power supply to control box



Use the pairing button on the control box



Attach legs to discs on the bed's frame

NOTE: For safety reasons, any lifting of the adjustable bed must always be performed by two (2) people. The unit should be on a flat surface before opening.

Installation guide

Assembling the headboard bracket (optional)

Note: headboard bracket kit is sold separately (order as SKU 2310014).

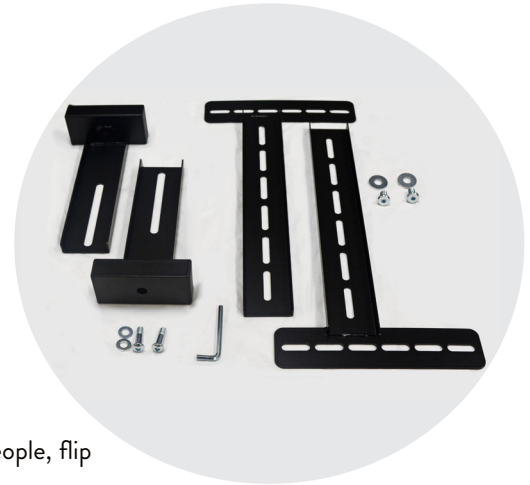
Parts included in headboard bracket kit:

- Inner headboard brackets (small) (2)
- Outer headboard brackets (large) (2)
- Small screws (for inner headboard bracket) (2)
- Large screws (for outer headboard bracket) (2)
- Small washers (for inner headboard bracket) (2)
- Large washers (for outer headboard bracket) (2)

Hardware to attach headboard to brackets is not included.

- 1 If the bed is in use, remove all bedding and the retainer bar. With two people, flip the adjustable bed over so that the top side faces the floor.
- 2 Remove both of the legs from the head section of the bed by turning them in a counterclockwise direction.
- 3 Slide the short, inner headboard bracket over the round panel where the leg was. Make sure the bracket opening is on the outside of the bed. Then, re-attach the leg to the bed by putting the screw in the leg through the bracket and into the hole in the round panel. Turn the leg clockwise to secure.
- 4 Place the open side of the large, outer headboard bracket over the inner headboard bracket end piece. The long slots on the outer headboard bracket should line up with the screw hole of the inner headboard bracket. The vertical part of the outer bracket should be on the outside of the bed, as shown.
- 5 Secure the outer headboard bracket to the inner headboard bracket using a large screw and washer. The width of the outer headboard bracket should align to the width of your headboard. Repeat on the other side. Once both brackets are aligned properly, tighten the screw with an Allen wrench (included with the headboard bracket kit).
- 6 Attach the legs of your headboard to the vertical sections of the outer headboard brackets using the headboard attachment hardware. Any necessary hardware should be included with your headboard and is not included with the headboard bracket kit.

The headboard brackets can be adjusted for optimal distance between the headboard and your adjustable bed. We recommend leaving a distance of 1.5" to 2" between the bed base and the headboard bracket.





NOTE: The slots of the vertical end of the outer headboard brackets should align with the slots on the leg of your headboard. If the slots are not aligning, adjust the width by unscrewing the outer headboard bracket to realign with your headboard's slots.



Remote control guide



Head or foot position adjustments (1 & 2)

Press the UP  or DOWN  arrows on the "H" and "F" buttons to raise or lower the head or foot sections of your adjustable bed.

Head and foot position adjustments (3)

Press the UP  or DOWN  arrows on the "T" button to raise or lower the head and foot sections together.

Flashlight (4)

Press this button to activate the flashlight on the remote control. Press the button again to turn the flashlight off.

NOTE: Make sure your bed is in a flat position before using it. Press the Flat button on the remote control after plugging in the power cord.

Remote control guide

Safety lock (5)

Press and hold for 3 seconds to lock the controls on the remote so that no adjustments can be made. Press again and hold for 3 seconds to unlock.

Presets

FLAT (6)

Press this button to return the bed to a flat position.

ZERO GRAVITY (7)

Press this button to activate the zero gravity position. This preset position elevates the legs slightly higher than the chest, in effect, allowing the blood to flow back to the heart to help reduce stress and fatigue.

TV (INCLINE) (8)

Press this button to activate the incline position. This preset raises the head section to an ideal position for watching TV, reading, or laptop use.

LOUNGE (LEISURE) (9)

Press this button to adjust the bed into a chaise lounge position to help remove stress and tension from your lower back.

Memory preset buttons (10)

You can store new head and foot positions by customizing the preset buttons: M1, M2, and M3. These can be reprogrammed with your desired positions at any time.

- 1 Move the head and/or foot sections to your desired position.
- 2 Press and hold one of the preset buttons until you hear a beep. The new bed position is now stored in your selected preset button.

You can choose to save over this setting by repeating the steps above with a new position.

Head or foot massage (11 & 12)

Press the + or - on the "H" button to operate the upper (+) or lower (-) head massage.

Press the + or - on the "F" button to operate the upper (+) or lower (-) foot massage.

Massage options

TIMER (13)

When the massage is on, use this button to set a time. Press this button once for a 10 minute massage, twice for a 20 minute massage, and 3 times for a 30 minute massage. Pressing the button a fourth time will cancel the timer.

STOP (14)

Press this button to disable any active massage.

WAVE MODE (15)

Wave mode massage changes the pattern of the massage from a constant vibration to a patterned, wave vibration.

Remote control guide

Using two bases with one remote

To operate two bases together as one bed.

- 1 Set up both bases and position them next to each other following the instructions on page 6.
- 2 Make sure both beds are plugged in, then raise the heads of both beds to access the control boxes under the beds.
- 3 Carefully unplug both beds.
- 4 Find the pairing button on the control box on the underside of the first bed. Plug the power cord into the wall outlet, and then press and hold the pairing button for three seconds. A light will flash to indicate the bed is ready for pairing. Press any button on the remote control (except the flashlight button). A beep will sound that indicates the remote has been paired with the base.
- 5 Plug in the second bed and repeat the actions in step 4 on the second bed, using the same remote.
- 6 Before using the adjustable base, make sure that the cords don't interfere with any of the bed's operations.
- 7 Both bases should now operate as one bed.



Use the pairing button on the control box

Mobile app guide

How to download the mobile app

To operate the adjustable bed from your mobile device

- 1 Install the mobile app on your phone. iPhone users: go to the App Store and search for "Rize Beds ." Android users, find "Rize Beds" on Google Play.
- 2 If you're not able to find the app, you can use a QR reader to scan the QR code on the right to take you directly to the download option.
- 3 After the app is installed, go to your device settings and allow the app to use your location and Bluetooth@settings.
- 4 Make sure your bed is plugged in and that you are within 6 feet of it.
- 5 Open the Rize Beds app. You will see a welcome page and then should be taken to the "Scan" screen. If not, the "Scan" icon is the first one on the left.
- 6 Select "+Add Device" and the app should automatically locate your bed.
- 7 The option will then appear to choose the room the bed is in. Choose either "Masterroom" or "Guest room".
- 8 You now have the option to use the app to operate your base. You can change positions and move the head and foot up and down from the "Positions" screen. To control the massage, select the "Massage" screen.



Download Rize Beds apk/app

Scan the QR code on your mobile device



Use the icons at the bottom of the screen to navigate in the app

Warranty



Limited Warranty For Adjustable Beds

RIZE® WARRANTS THAT IT WILL, AT THEIR OPTION, REPLACE OR REPAIR THE PURCHASER'S ADJUSTABLE BED PARTS IF THEY ARE DEFECTIVE DUE TO FAULTY WORKMANSHIP OR MATERIALS, SUBJECT TO THE LIMITATIONS DESCRIBED IN THIS WARRANTY.

THIS WARRANTY APPLIES ONLY TO THE CLARITY II-ENHANCED MODEL OF ADJUSTABLE BED. THE MODEL MAY BE IDENTIFIED BY THE SERIAL NUMBER ON THE PRODUCT.

5-Year Period for All Labor: This warranty will apply for 5 years for labor on the bed frame, all components, and parts, including, without limitation, electronics, electrical components, drive motors, WiFi module, power supply and power cords, and massage motors.

5-Year Period for All Components: The warranty will apply for 5 years for the bed frame, all components and parts, including, without limitation, electronics, electrical components, drive motors, WiFi module, power supply and power cords, and massage motors.

20-Year Period for Bed Frame: The warranty will apply for 20 years prorated to the bed frame, defined as follows: the metal structure of the adjustable bed system only, and specifically does not include its cover, side rails, decking or legs, or other attachments thereto, such as actuator lift motors, control box, WiFi modules, power supply, power cords, control box or other electrical or mechanical components. For years 6 through 20 the warranty will be reduced by one-fifteenth (1/15) for each year beyond the fifth year.

Start of Warranty Period: The warranty periods stated above will commence on the date of the first retail purchase of the adjustable bed system from an authorized Rize® reseller, provided that proof of purchase and warranty registration occur within the time and in the manner set forth below. In the case of replacement parts provided by Rize, the warranty will apply to the original warranty period and will not extend beyond such period.

NO OTHER WARRANTY EXPRESS OR IMPLIED: The foregoing express warranty is the only warranty by Rize and all other express warranties or warranties implied by law or otherwise (including without limitation, any implied warranty of fitness for a particular purpose) are

hereby denied and disclaimed to the full extent permitted by applicable law.

EXCLUSIONS FROM WARRANTY: Loss, damage, malfunctions or other defects caused in whole or in part by any one or more of the following are not covered by any warranty and neither Rize nor the seller shall be responsible for them: ordinary wear and tear; damage not directly caused by a defect covered by this express warranty; failure to comply with this user Manual and/or any other user instructions issued by Rize for use and maintenance, including without limitation, weight limits and operation; modifications not performed by Rize; use of any parts, components, or accessories that are not supplied by Rize for the specific product and installed by an authorized Rize service provider; use of the product for purposes or in a manner not expressly intended by Rize as described in this Manual or any other misuse or abuse; storage or use outside of home or other exposure to the elements; dampness; or transportation or other handling by anyone other than Rize.

EXCLUSIVE LIMITED REMEDY: The sole and exclusive remedy for any item which fails to meet the express written warranty set forth above shall be, at Rize's option, either repair or replacement of the defective item. Rize may require reasonable evidence of the existence of a defect, and Rize customer service staff will discuss specific requirements with the purchaser based on the defects identified by the purchaser. Replacement parts will be provided at no cost to the purchaser, provided that the defective parts are delivered to Rize, unless Rize instructs otherwise in the claims process (see below). Subject to advance approval by Rize, it will also pay reasonable shipping costs for returns requested by Rize and replacement parts or bedding systems.

CLAIMS PROCESS: Prior to contacting Rize, please ensure that use and maintenance instructions in this Manual have been followed. **The following process must be followed to initiate a warranty claim:** (1) during the applicable warranty period stated above, contact Rize customer service to initiate the claim and provide proof of status as the original retail purchaser from an authorized Rize® products reseller and prior timely registration of the product (see PRODUCT REGISTRATION on the next page); (2) identification of suspected defect and compliance with Rize requests for documentation or other evidence of the defect, such as return of parts to Rize, the

Registration



Warranty Registration Form

Name: _____

Phone: _____

Street address: _____

City: _____

State: _____

Zip code: _____

Email address: _____

Store where purchased: _____

Serial no: _____

Invoice no: _____

Model no: _____

Survey

Age:

18-30 31-40 41-50 51-60 61-70 71 & up

Reason for purchasing an adjustable bed:

Health Comfort Other

How did you find out about our beds?

Advertising A friend Store Article Internet Other

Please mail to:
Rize®
Customer Service
31050 Diamond Parkway
Solon, OH 44139

**You can also register your bed
online at www.rizebeds.com.**

cost of which will be paid by Rize if the defect is confirmed by it or inspection by an authorized Rize service technician or other person approved in writing for that purpose by Rize; and (3) remedy by Rize as stated herein.

LIMITATION OF LIABILITY: In no event shall Rize be liable for incidental or consequential damages of any kind or nature whatsoever caused by or arising out of any product defects, and the sole and exclusive remedy shall be repair or replacement of defective items within warranty to the extent and in the manner provided herein.

Some states do not allow the exclusion or limitation of incidental or consequential damages, so the above limitation or exclusion may not apply. This warranty gives the Purchaser specific legal rights, and the purchaser may also have other legal rights, which may vary from state to state. This warranty is valid in all 50 states, Puerto Rico, and Canada.

If you experience any problem with your Rize bed during the warranty period, please contact Rize Customer Service by calling the telephone number located on the back cover of this manual.



IF YOU EXPERIENCE ANY TROUBLE WITH YOUR BED PLEASE CALL CUSTOMER
SERVICE AT THE FOLLOWING TOLL FREE NUMBER:

1-800-444-8444

Or email warranty@rizebeds.com. Please have your receipt ready and available.

Thank you and enjoy your adjustable bed!