

# DRINK E-Z



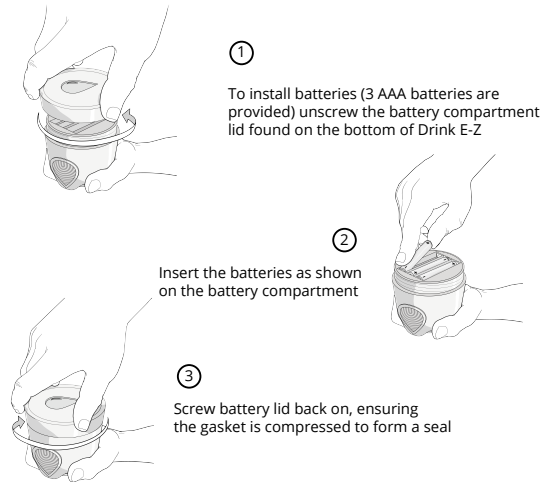
Instruction Manual  
+  
Cleaning Instructions  
+  
Warranty Information

## READ ALL INSTRUCTIONS BEFORE USING

WARNING - TO REDUCE THE RISK OF INJURY OR HARM TO PERSONS OR DAMAGE TO THE PRODUCT:

- DO NOT drink hot water from the Drink E-Z Bottle
- DO NOT use any blended drinks in the Drink E-Z Bottle
- DO NOT use abrasive cleaning agents to clean or wash the Drink E-Z Bottle
- ALWAYS follow the cleaning instructions diligently and frequently

## QUICK START GUIDE HOW TO USE



①

To install batteries (3 AAA batteries are provided) unscrew the battery compartment lid found on the bottom of Drink E-Z

②

Insert the batteries as shown on the battery compartment

③

Screw battery lid back on, ensuring the gasket is compressed to form a seal

Test the Drink E-Z by pressing the momentary on/off switch (what are you calling it for the consumer?). You will hear the pump activate. If the pump does not activate, check the batteries were installed correctly. Change the speed of the pump (3 speeds are provided) by pressing the speed selector switch until the low speed setting is found. Do not run the Drink E-Z pump dry for more than a few seconds. When run dry the pump may make a squealing sound. This will stop as soon as the Drink E-Z is run with liquid in it.

## Filling the Bottle: Option 1

①

Install the straw by press-fitting it into the hole located directly in the center of the base BEFORE screwing on the bottle body



②

Screw on the bottle body to the base



Fill with preferred drinking liquid



④

Thread the straw through the lid and screw on the lid to the bottle body

## Filling the Bottle: Option 2

①

Screw on the bottle body



②

Install the straw by press-fitting it into the hole located directly in the center of the base

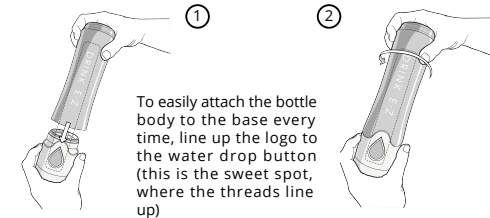


③



## TIPS & TRICKS

### Attaching Body to Base



To easily attach the bottle body to the base every time, line up the logo to the water drop button (this is the sweet spot, where the threads line up)

### Changing the Flow Rate (Speed Control)

Choose your desired flow rate/speed by pressing the variable speed control button located on the opposite side of the main push button. The speeds vary from Speed 1, Speed 2, and Speed 3



### Activating the Pump and Drinking

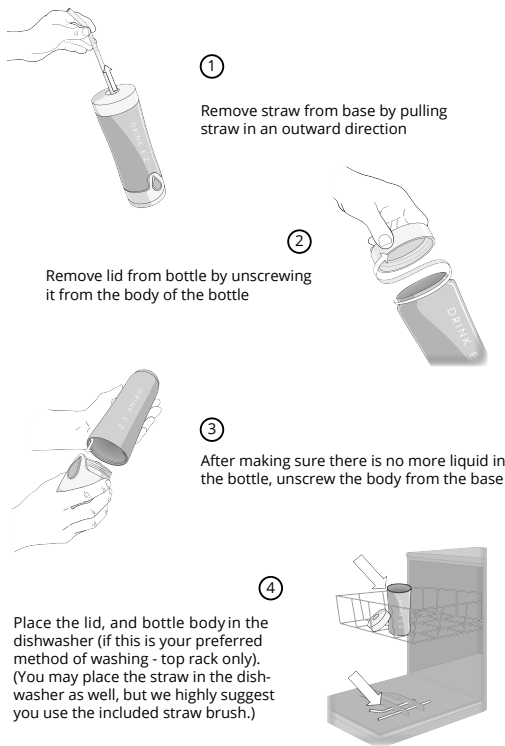


Bring the straw up into your mouth, and seal your lips around the straw. Push the main button for the desired time (a 1 second pulse is suggested to start), while keeping your lips sealed around the straw. The sensation of powered drinking will be very strange for the first few times and may take some time for the new user to become comfortable with it.

## HOW TO CLEAN

Keeping your Drink E-Z bottle clean and sanitary is important, please follow the cleaning instructions provided in this manual. A portion of the Drink E-Z bottle is top rack dishwasher safe; however please make sure that you thoroughly read the cleaning instructions below before washing your bottle. To prolong the life of Drink E-Z, it is recommended that it be hand washed.

\*Ensure to wash your bottle before using it for the first time\*



① Remove straw from base by pulling straw in an outward direction

② Remove lid from bottle by unscrewing it from the body of the bottle

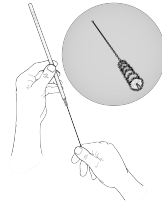
③ After making sure there is no more liquid in the bottle, unscrew the body from the base

④ Place the lid, and bottle body in the dishwasher (if this is your preferred method of washing - top rack only). (You may place the straw in the dishwasher as well, but we highly suggest you use the included straw brush.)



⑤ Turn on the dishwasher

To properly clean your straw. We have included a straw cleaning brush - please use this after each use to ensure best cleaning practice

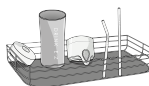


The Drink E-Z base is watertight (as long as you don't open the battery compartment & the lid is on tight) - we suggest filling your sink or a bowl with hot, soapy water or a natural cleaning solution like water and vinegar, immersing the base in the water and holding down the main button to activate the pump for about 20 seconds.

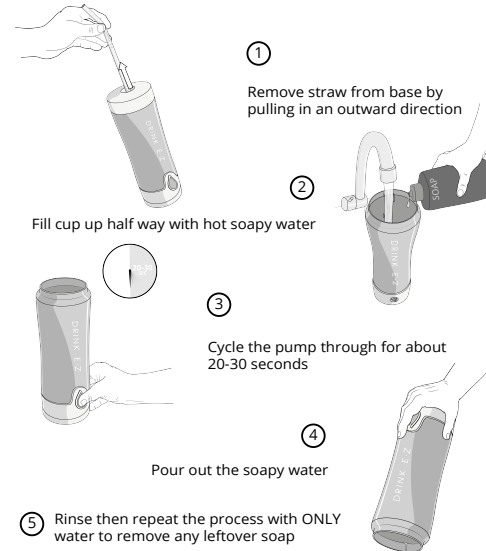


⑧ Remove base from cleaning water and submerge the pump housing in clean rinse water and activate the pump for a few seconds to rinse out any cleaning water. Remove the pump base from the rinse water and run the pump upside down to expel any remaining water.

Air dry in a dish rack facing downwards, so the remaining water can drain out



## QUICK CLEAN



① Remove straw from base by pulling in an outward direction

② Fill cup up half way with hot soapy water

③ Cycle the pump through for about 20-30 seconds

④ Pour out the soapy water

⑤ Rinse then repeat the process with ONLY water to remove any leftover soap

## NOTE'S & TROUBLESHOOTING

- It is possible that the paint finish on your stainless steel bottle be scratched by using harsh abrasive cleansers. To help prevent the bottle finish from being scratched, never use abrasive agents to clean it.
- For liquids that leave a film, ie. protein drinks - please take extra time to make sure the pump is properly cleaned after each use.
- After drinking protein or sugary based drinks, if you cannot clean it right away, please run water through the pump to reduce the opportunity for bacteria growth inside the pump
- Once every couple weeks, please do a thorough clean with your everyday household vinegar (minimum 5% Acetic Acid) or another approved food safe cleaning product.
- For best performance, please always use high quality, trusted batteries only.
- To order replacement straws and/or brushes, please visit our online store at [www.drink-e-z.com](http://www.drink-e-z.com) or call us at 1-866-374-6539
- If the pump will not operate or is seized, even after inserting fresh batteries into the unit, try to use the brush that is included in the Drink E-Z package to gently dislodge any material that may be stuck in the inlet/outlet area inside the pump. Another possible solution is to place hot water into the bottle to allow any dried drink that may be in the pump housing to soften and dissolve. After the system has sat for a few minutes try the pump button again to circulate the water and clean the pump. NOTE: Do not submerge the entire unit in hot water. Only place the hot water into the bottle with the pump base attached.
- If you hear a squeal from your Drink E-Z bottle this is due to the pump being dry. Fill the bottle with water or drink and the squeal will stop.

## WARRANTY

Drink E-Z Products Inc sells its products with the intent that they are free of defects in manufacture and workmanship for a period of 30 days from the date of original purchase, except as noted below.

Drink E-Z Products Inc warrants that its products will be free of defects in material and workmanship under normal use and service. This warranty extends only to consumers and does not extend to Retailers.

To obtain warranty service on your Drink E-Z Products Inc product, please contact us by telephone at 1-866-374-6539 for assistance - or send us an email at [info@drink-e-z.com](mailto:info@drink-e-z.com) with the subject "WARRANTY". Please be sure to have the model number of the product available (if applicable), the date of purchase, and proof of purchase.

No COD refunds or shipments will be accepted or processed.

Drink E-Z Products Inc does not authorize anyone, including, but not limited to, Retailers, the subsequent consumer purchaser of the product from a Retailer or remote purchasers, to obligate Drink E-Z Products Inc in any way beyond the terms set forth herein. This warranty does not cover damage caused by misuse or abuse; accident; the attachment of any unauthorized accessory; alteration to the product; improper installation; unauthorized repairs or modifications; improper use of electrical/power supply; loss of power; dropped product; malfunction or damage of an operating part from failure to follow manufacturer's recommended maintenance; transportation damage; theft; neglect; vandalism; or environmental conditions; loss of use during the period the product is at a repair facility or otherwise awaiting parts or repair; or any other conditions whatsoever that are beyond the control of Drink E-Z Products Inc.

This warranty is effective only if the product is purchased and operated in the country in which the product is purchased. A product that requires modifications or adoption to enable it to operate in any other country than the country for which it was designed, manufactured, approved and/or authorized, or repair of products damaged by these modifications is not covered under this warranty.

THE WARRANTY PROVIDED HEREIN SHALL BE THE SOLE AND EXCLUSIVE WARRANTY. THERE SHALL BE NO OTHER WARRANTIES EXPRESS OR IMPLIED INCLUDING ANY IMPLIED WARRANTY OF MERCHANTABILITY OR FITNESS OR ANY OTHER OBLIGATION ON THE PART OF THE COMPANY WITH RESPECT TO PRODUCTS COVERED BY THIS WARRANTY. DRINK E-Z PRODUCTS INC SHALL HAVE NO LIABILITY FOR ANY INCIDENTAL, CONSEQUENTIAL OR SPECIAL DAMAGES. IN NO EVENT SHALL THIS WARRANTY REQUIRE MORE THAN THE REPAIR OR REPLACEMENT OF ANY PART OR PARTS WHICH ARE FOUND TO BE DEFECTIVE WITHIN THE EFFECTIVE PERIOD OF THE WARRANTY. NO REFUNDS WILL BE GIVEN. IF REPLACEMENT PARTS FOR DEFECTIVE MATERIALS ARE NOT AVAILABLE, DRINK E-Z PRODUCTS INC RESERVES THE RIGHT TO MAKE PRODUCT SUBSTITUTIONS IN LIEU OF REPAIR OR REPLACEMENT.

This warranty does not extend to the purchase of opened, used, repaired, repackaged and/or resealed products, including but not limited to sale of such products on Internet auction sites and/or sales of such products by surplus or bulk resellers. Any and all warranties or guarantees shall immediately cease and terminate as to any products or parts thereof which are repaired, replaced, altered, or modified, without the prior express and written consent of Drink E-Z Products Inc.

This warranty provides you with specific legal rights. You may have additional rights which may vary from country to country. Because of individual country regulations, some of the above limitations and exclusions may not apply to you.