



# WOOD LOOK ALUMINUM CHAIR

---

**When designing a chair there is a system we like to follow. From Design, Structure, Material, Parts, Workmanship, to the Finished Product and Packing, each step is very important.**

## **BRIEF PROFILE**

### **1. Safe and reliable:**

- 1-1. Material (raw materials)
- 1-2. Structure and parts

### **2. Key process:**

- 2-1. Polishing
- 2-2. Pickling
- 2-3. Ground color coating
- 2-4. Wood color proceeding:
  - 2-4.1. Paper cutting
  - 2-4.2. Attaching paper
  - 2-4.3. Reinforcing paper
  - 2-4.4. Heating
  - 2-4.5. Paper cleaning

## 1-1. Material

Safety is very important for chairs. To ensure safe and good quality products, we only choose reliable raw material.

Material is essential for safety. We always choose the raw material with enough thickness, and never use recycled material.

The aluminum thickness we use for our chairs is 2.0mm or above.

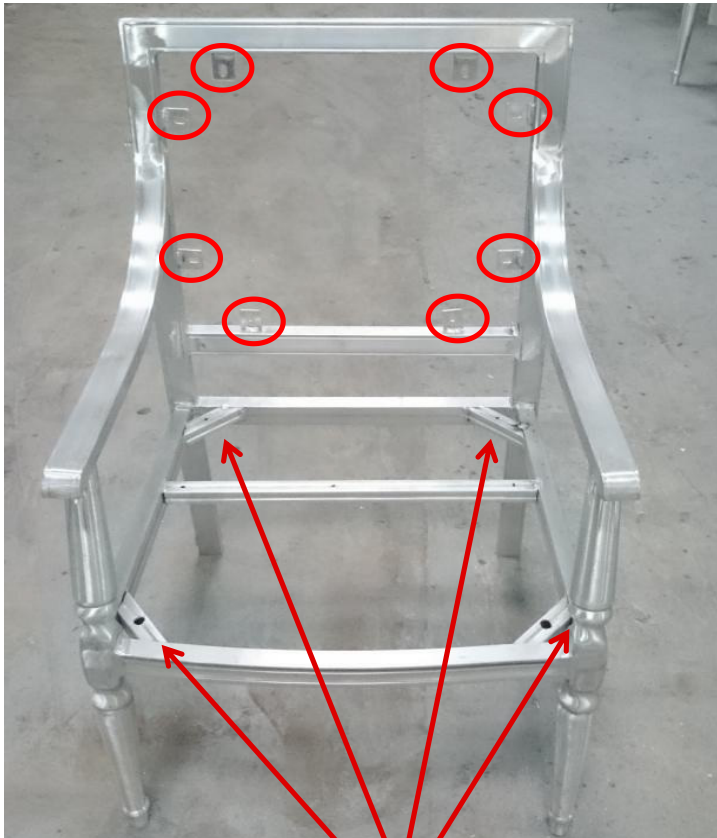


## 1-2. Structure

Reasonable and durable furniture is our first choice.

All chairs have a 6pcs 2.0 mm thickness that loops back.  
Seat has 4 triangular structures providing strong support.  
Aluminum bar is 2.0 mm thick.

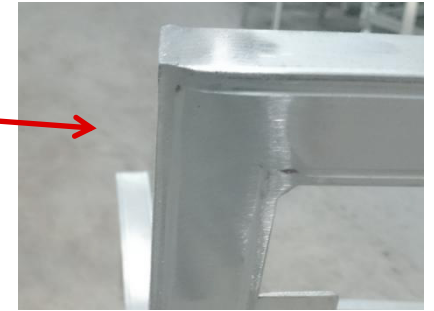
For side chair legs, we add extra reinforcement going from the top of the chair down to the legs. That way the legs do not break easily.





## 2-1. Polishing

Detailing produces a higher level of quality. We take our time to make sure every surface and joint is smooth and polished. The surface will give the product a more wood like texture.



## 2-2. Pickling

The key preparation for the surface process is using a powder coat, paint coat and wood look coat.

Pickling removes the oils from the metal surfaces and adds a layer of chemical protection on the surface.

This step is very important because the thickness of the chemical layer determines the adhesion strength of metal to the surface coating.

Years of experience and continuous research we have mastered the exact thickness, maximizing the absorption capacity of the metal.



## 2-3. Ground color coating

Each wood color is produced by the powder coat and wood like paint. In case the ground color is poor quality the result wood look color would be bad.

Hand polish to ensure the surface is smooth



Spray ground color



Chair stays in the auto heating oven flow line for some time



Frames after cool-down



## 2-4. Wood color proceeding

The first step is to print the paint on paper, next the paper is glued on the frame, and lastly the heat is used to transfer the paint to the metal frame.

**2-4.1. Paper cutting:** The wood texture on the paper is cut precisely that way the texture looks natural. Once the product is done the product will resemble wood.

**2-4.2. Paper attaching:** Our team will carefully attach the paper to the frame, including joints.

**2-4.3. Reinforcement:** The frame is wrapped ensuring the paper will truly transfer, especially on the curved parts and joints.

**Wood texture paper cut**



**Paper is adhered to the frame**



**Paper is reinforced with wrapping**





We are one of the first manufacturers to produce metal furniture resembling wood. This method of production is becoming very popular in today's market.

**2-4.4. Heating:** Temperature and time is very crucial of how the final product will look. Our engineers have mastered the method that way each finished product has the same quality as the next.

**2-4.5. Paper cleaning:** The product goes under inspection 3 times ensuring the paint is well adhered and paper is cleaned completely.

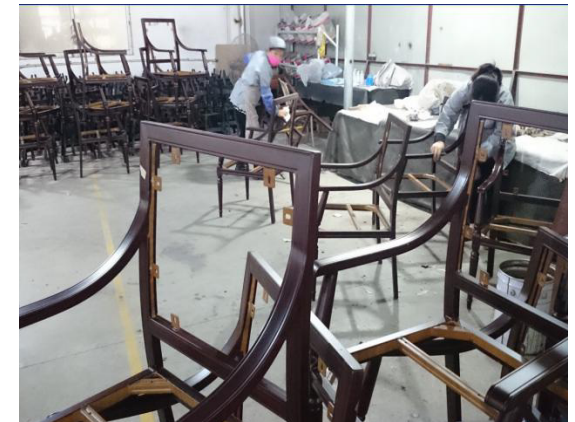
**Chairs are added to the auto heating line**



**Chairs are rotated on the heat line for 2-3 hours**



**Finished color inspection**





The finished product looks so realistic that most of our clients cannot tell the difference.



