
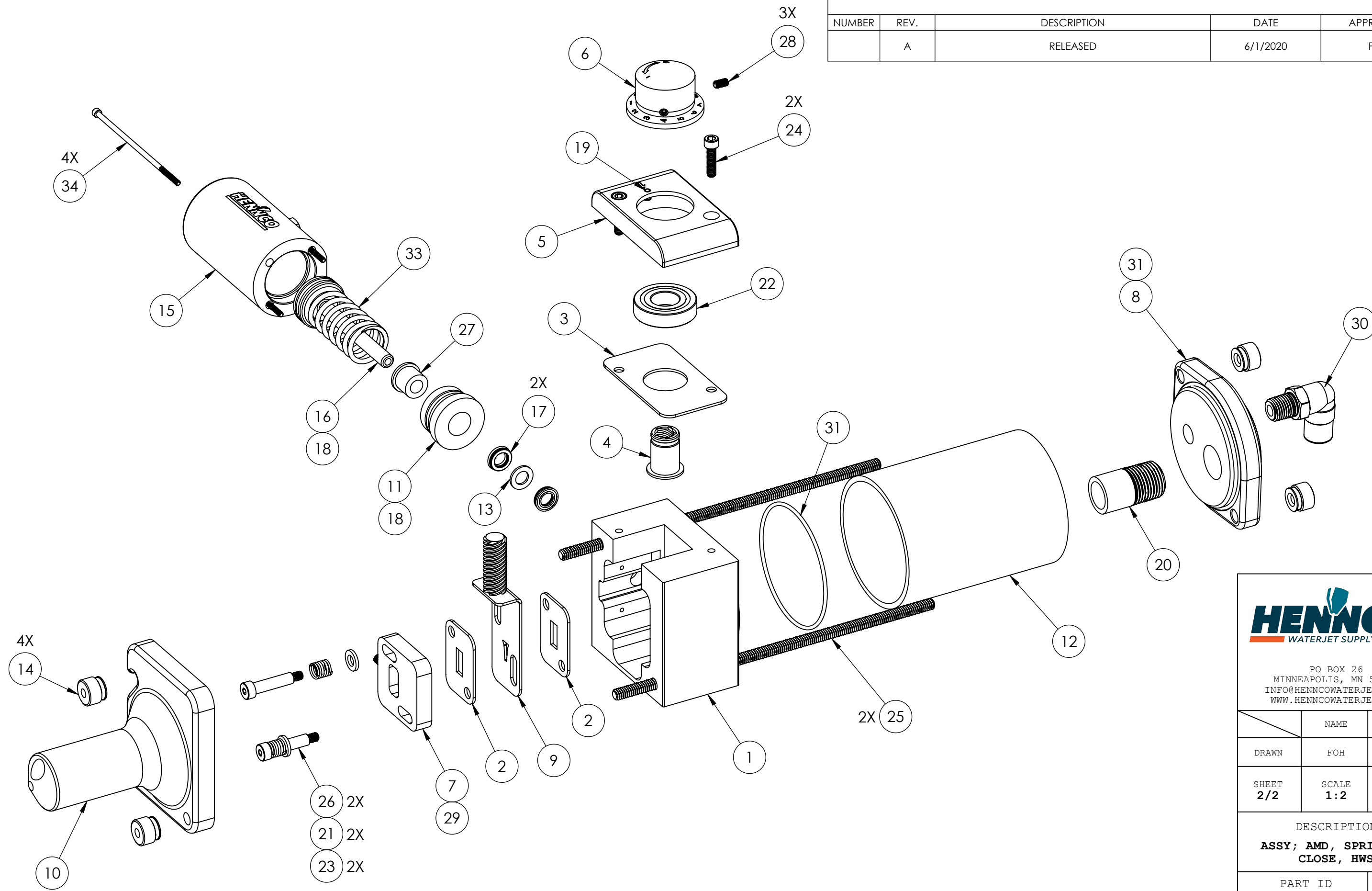


ITEM NO.	PART NUMBER	DESCRIPTION	QTY.
1	19002	BASE; AMD, HWS	1
2	19005	BEARING PLATE; AMD, HWS	2
3	19006	RETAINER; AMD ADJUSTMENT KNOB BEARING, HWS	1
4	19007	NUT; AMD ADJUSTMENT KNOB, HWS	1
5	19008	BEARING HOUSING, AMD, HWS	1
6	19009	KNOB; AMD ADJUSTMENT, HWS	1
7	19010	PLATE; AMD ON/OFF, HWS	1
8	19011	CAP; AMD, HWS	1
9	19012	APPERTURE ASSY; AMD, HWS	1
10	19013	BOTTOM COVER; AMD, HWS	1
11	19016	SEAL; AMD AIR CYLINDER, HWS	1
12	19017	ACRYLIC TUBE; AMD, STANDARD CAPACITY, HWS	1
13	19018	WASHER; AMD PISTON SEAL BACKUP, HWS	1
14	19019	NUT; 1/4-20 KNURLED THUMB NUT, SS	4
15	19029	HOUSING; AMD AIR CYLINDER, STC, HWS	1
16	19030	PISTON; AMD AIR CYLINDER, STC, HWS	1
17	99010	SEAL; U-CUP, .3125 X .5625 X .125	2
18	99010-119	O-RING; BUNA-N, 70A, -119	2
19	99011	FST; BALL PLUNGER, #8-32 X .375, SS	1
20	99015	PIPE FTG; NIPPLE, 1/2" NPTM X 1-1/2", SINGLE END, SS	1
21	99017	SPRING; .360 OD X .750 LG, .041 WIRE DIA,	2
22	99018	BALL BEARING; SEALED, 1.375 X .625 X .344	1
23	99020	FST; FW, 1/4", SS	2
24	99023	FST; SHCS, #10-32 X .750, SS	2
25	99025	FST; ROD, 1/4-20 X 8.000F, SS	2
26	99026	FST; SHSS, #10-32 X .250, .250 X 1.000, SS	2
27	99027	BEARING; FLANGED SLEEVE, .5625 X .3125 X .500, BRONZE	1
28	99028	FST; SSS, CP, #8-32 X .313, SS	3
29	99039	FST; STUD, #10-32 X .750, BO	1
30	99058	TUBE FTG; ELBOW, 1/4" NPTM X 3/8" TUBE, PTC	1
31	99059	O-RING; BUNA-N, 70A, 2.0MM X 69MM	2
32	99071	PIPE FTG; 1/8MNPT, BREATHER, NPS	1
33	99076	SPRING; .970 OD X 2.000 LG, .1051 WIRE DIA, C&G ENDS	1
34	99080	FST; SHCS, #4-40 X 3.500, BO	4

		
PO BOX 26 MINNEAPOLIS, MN 55304 INFO@HENNCOWATERJET.COM WWW.HENNCOWATERJET.COM		
	NAME	DATE
DRAWN	FOH	5/26/2020
SHEET 1/2	SCALE 1:2	SIZE A
DESCRIPTION <b>ASSY; AMD, SPRING TO CLOSE, HWS</b>		
PART ID <b>19031</b>		REV <b>A</b>

REVISIONS				
NUMBER	REV.	DESCRIPTION	DATE	APPROVED
	A	RELEASED	6/1/2020	PTF



**HENNCO**  
WATERJET SUPPLY

PO BOX 26  
MINNEAPOLIS, MN 55304  
INFO@HENNCOWATERJET.COM  
WWW.HENNCOWATERJET.COM

	NAME	DATE
DRAWN	FOH	5/26/2020
SHEET 2/2	SCALE 1:2	SIZE B
DESCRIPTION		
ASSY; AMD, SPRING TO CLOSE, HWS		
PART ID 19031	REV A	