



# WaterWorx Tank Adaptors

## Technical Data Sheet

External thread Gas cylindrical ISO 228/1.

WaterWorx tank adaptors are manufactured from glass fibre reinforced polypropylene for added strength and durability. Available in sizes 3/4" to 2" BSP.

Designed for simple and quick installation. Used extensively for pipe and valve connections in storage tanks, vessels, pumping stations, IBC containers and water butts.

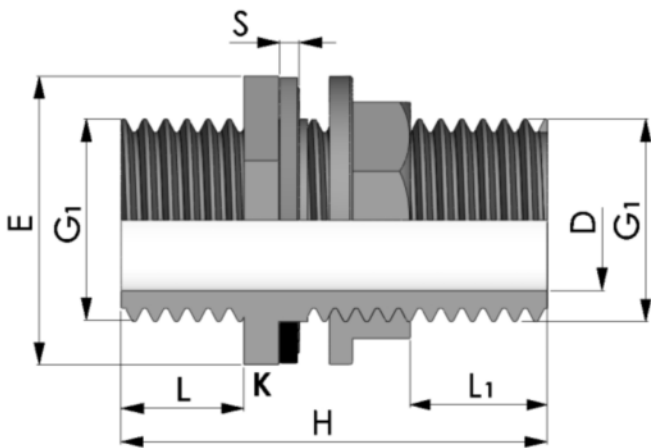
The design offers a male threaded connection both internally and externally meaning you can connect your valves, pipes and fittings to both threaded ends of the connector both inside and outside of the storage tank.

### Technical Specification.

- Material: Glass Fibre reinforced polypropylene with EPDM gasket.
- Colour: Black (RAL 9011)
- Operating Pressure: 10 bar at 20° C
- Max working Temperature: 80° C

### Torques

| Threads         | 1/2" | 3/4" | 1" | 1 1/4" | 1 1/2" | 2" |
|-----------------|------|------|----|--------|--------|----|
| Max Torque (Nm) | 6    | 8    | 10 | 15     | 20     | 25 |



| Article Nr | G1     | L  | L (1) | D    | S   | H  | E    | K  |
|------------|--------|----|-------|------|-----|----|------|----|
| 997005     | 1/2"   | 14 | 23    | 13   | 2.5 | 62 | 41   | 38 |
| 997075     | 3/4"   | 15 | 26    | 18   | 2.5 | 65 | 48   | 45 |
| 990100     | 1"     | 18 | 29    | 25   | 2.5 | 70 | 54   | 50 |
| 990125     | 1 1/4" | 20 | 31    | 29.5 | 2.5 | 75 | 65   | 60 |
| 990150     | 1 1/2" | 20 | 31    | 34.5 | 2.5 | 75 | 70.5 | 65 |
| 990200     | 2"     | 24 | 36    | 43.5 | 2.5 | 84 | 86.5 | 80 |

Above measurements in (mm)