

## ***...installed in Seconds, lasts a lifetime...***

New generation of feed-through tank fittings. QwikFit push-in Polypropylene (PP) connection for tanks and containers in PE, steel, aluminium and IBC containers to store and transport water and other fluids.

### **Benefits compared to traditional tank connections**

#### **Versatility**

The QwikFit tank connector is push-fitted exclusively from the outside of the wall making it unnecessary to work on both sides of the tank wall. Fittings can also fit all plastic or steel tanks for storing liquids, with a wall thickness of between 2 and 10 mm.

#### **Speed**

It is possible to push-fit the QwikFit connection in just five seconds from the outside of the tank with the commitment of only a single installer. Save on time as well as labour!

#### **Variety**

The large variety of materials (PP, St/St and Brass) is matched by a wide range of sizes, from 1/2" to 2" inches, with male or female threads. The techno-polymers used and the different types of gaskets allow for use of these fittings in the automotive sector, for shaped tanks, for oil and diesel.

#### **Performance**

QwikFit tank connectors, thanks to the gasket adaptable to the surface of the hole and variable in its cross-section, also guarantee water tightness on irregular walls with variations in thickness. They are the optimal solution for the maintenance and replacement of faulty metal inserts, guaranteeing maximum tightness reliability.

#### **Accessories**

Fast and simple installation of QwikFit fitting using the QwikFit socket wrench specifically designed for use with a drill. See page 6 for more details.



No need to enter the tank for installation



Only 1 installer required to fit QwikFit tank connections



Speed up installation even more by using the QwikFit socket wrench system

**...installed in Seconds, lasts a lifetime...**

## Applications

Tanks for industry, including water treatment, rainwater harvesting, automotive, petrochemical, pharmaceutical, food industrial machinery, fuel distributors.

Tanks for water, food, drinking water, fluid transport, swimming pools, aquaculture.

Tanks for agriculture including fertilisers, irrigation, water storage, water troughs.

## Installation

1) The portion of rubber seal between the hole and the fitting allows the fitting to be perfectly installed, absorbing the forces due to the water hammers and adapting perfectly to the deformations of the tank/pipe, thus avoiding breakages or leaks.

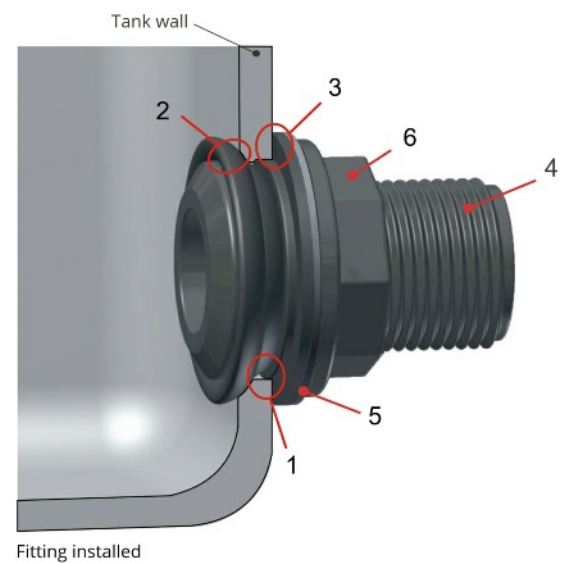
2) The seal perfectly achieves the seal, adhering to the internal and external surfaces of the hole. The increase in the diameter of the gasket, in the wall, ensures that a perfect watertight seal is achieved, even at high pressures. The fitting can be re-extracted by unscrewing the nut externally.

3) It allows the seal to tighten and its optimal installation, exercising the seal on the outer surface of the wall.

4) It is the central body of the fitting. The internal groove locks the gasket at the top, while, through the thread, the necessary force is exerted to perfectly adapt it to the wall.

5) Simple washer that acts as a bearing, avoids the frictions that would be created between the nut and the rubber that could compromise the proper functioning of the assembly.

6) Screwing the nut allows you to shape the gasket by threading, ensuring a seal. By reversing the screwing direction, you can pull out the fitting.

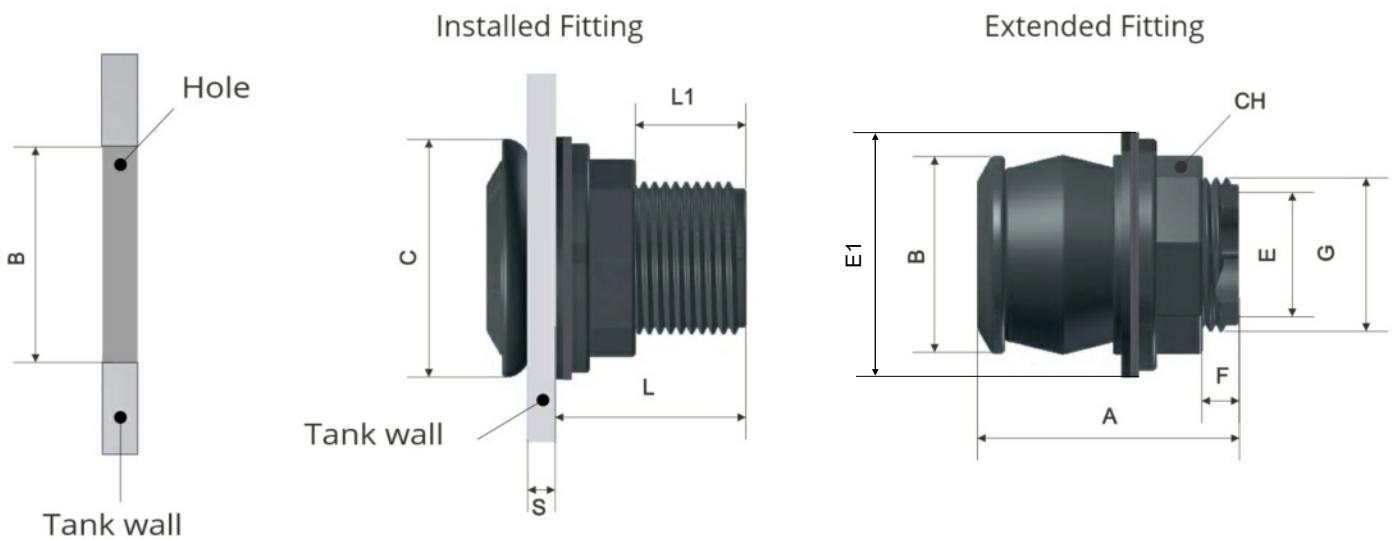


	1/2"	3/4"	1"	1 1/4"	1 1/2"	2"
S min	2	2	2	4	4	4
S max	8	9	10	12	12	12

The above diagram and table showing tank wall thickness. All measurements in mm.

QwikFit connections are made from Polypropylene & Fibreglass for extra strength and durability and are available in sizes 1/2" to 2" BSP. Standard QwikFit gasket is EPDM, but is also available in NBR and FKM.

Article Nr	Ø Hole (Mm)	Size	Bag Qty	Carton Qty
990005	29	1/2"	10	180
990075	35	3/4"	10	100
990100	43	1"	10	70
990125	52	1 1/4"	5	40
990150	59	1 1/2"	5	30
990200	70	2"	5	16



G	B	E1	CH	A	E	F	L1
1/2"	29	37	28	49	13	5	13-19
3/4"	35	43	32	52	18	4	15-22
1"	43	53	41	56	24	7	19-27
1 1/4"	52	62	50	65	29.5	6	21-29
1 1/2"	59	68	57	75	34.5	16	31-39
2	70	80	70	91	45.5	31	46-54

*...installed in Seconds, lasts a lifetime...*

## Instructions for assembly

### Step 1...

Before drilling the holes into the tank, decide on the best locations for your tank connections and mark with a marker pen. Drill tank hole either using QwikFit countersink tool which is designed for 1/2", 3/4" and 1" tank outlets (29-35-43mm) For bigger sizes use the correct sized holesaw. QwikFit connections are supplied with with complete instructions. Sand drilled hole with abrasive paper and remove burrs and any sharp edges.

### Step 2...

Insert the QwikFit tank connector into the pre-drilled hole on the tank.

### Step 3...

Hand-tighten the nut till the QwikFit tank connector grips on the tank wall.

### Step 4...

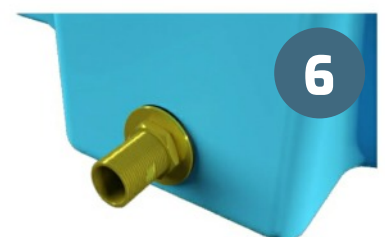
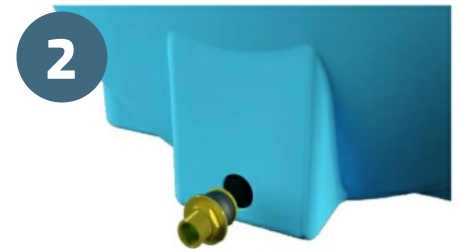
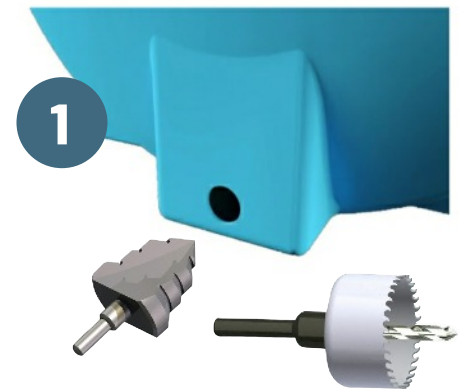
Using the correct socket wrench tighten the tank connector to get a good seal. Please note that we strongly recommend you use a drill with an adjustable torque setting.

### Step 5...

When the tank connector is installed properly the QwikFit tank connector should look like (fig. 5) from inside the tank.

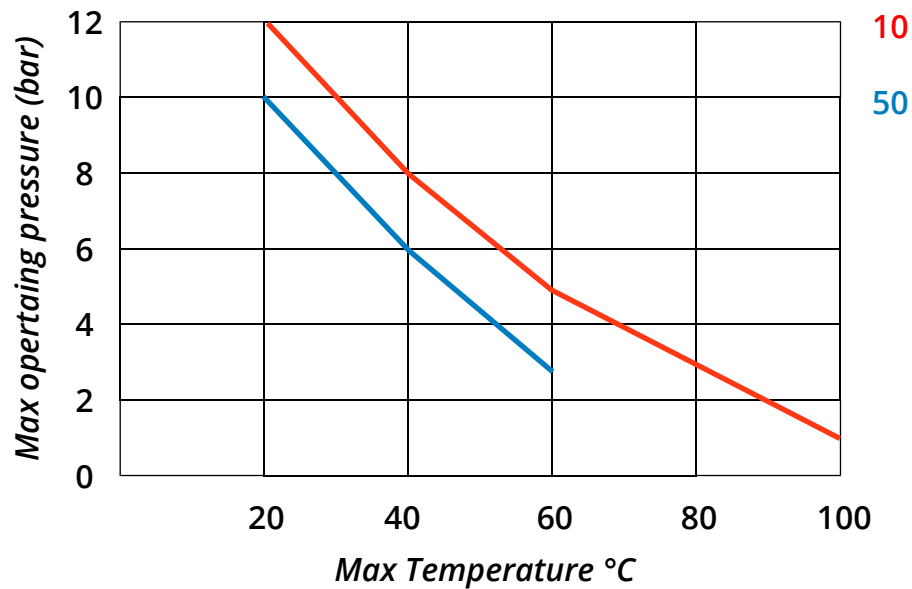
### Step 6..

You have now successfully installed a QwikFit tank connector as shown in (fig.6)

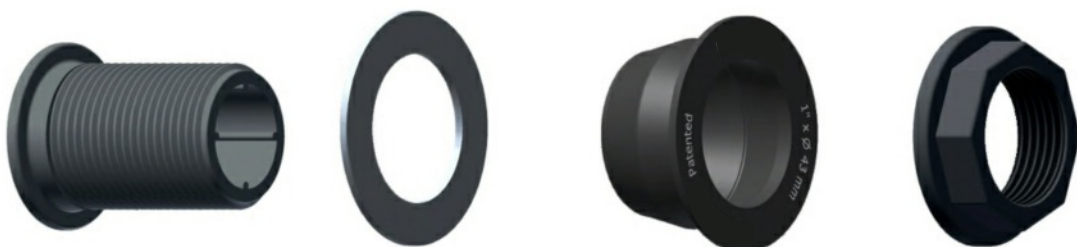


## Maximum operating conditions

Diagram of the change in pressure as a function of the temperature for water or fluids in respect of which PP are classified chemically suitable



Max. Temperature	Operating pressure maximum
20° C	10 bar
40° C	8 bar
60° C	5 bar
80° C	2.5 bar
100° C	1.5 bar



QwikFit connections are made from Polypropylene & Fibreglass for extra strength and durability and are available in sizes of 1/2" to 2" BSP. Standard QwikFit gasket is EPDM, but is also available in NBR and FKM.

Article Nr	Ø Hole (Mm)	Size	Bag Qty	Carton Qty
990005	29	½"	10	180
990075	35	¾"	10	100
990100	43	1"	10	70
990125	52	1 ¼"	5	40
990150	59	1 ½"	5	30
990200	70	2"	5	16



The Aluminium wrench socket is designed to be used with our QwikFit fittings. It is used in combination with a drill with adjustment tightening torque - Installation takes place in just 5 seconds! Only one installer, directly from the outside, will be able to install hundreds of fittings in a few hours, in maximum safety. Set the tightening torque according to your needs (recommended 8-10 Nm)

Article Nr	Socket size Ø (Mm)	Size	Box Qty
991005	37	½"	1
991175	43	¾"	1
991100	53	1"	1
991125	62	1 ¼"	1
991150	68	1 ½"	1
991200	80	2"	1



This particular trunk-conical cutter, made of hardened stainless steel, is designed to facilitate the installation of QwikFit tank connectors. It allows you to drill a hole on a wall or thanks to the taper, easily widen an existing hole, to adapt it to the diameters of the QwikFit tank connectors. It is suitable for large volumes of work. There is no need to remove the crown of material that remains attached the cutter after drilling, moreover, there is no need to sand the hole made. Designed for use on plastic tanks.

Article Nr	Socket size Ø (Mm)	Size	Box Qty
992943	29-35-43	½" ¾" 1"	1

