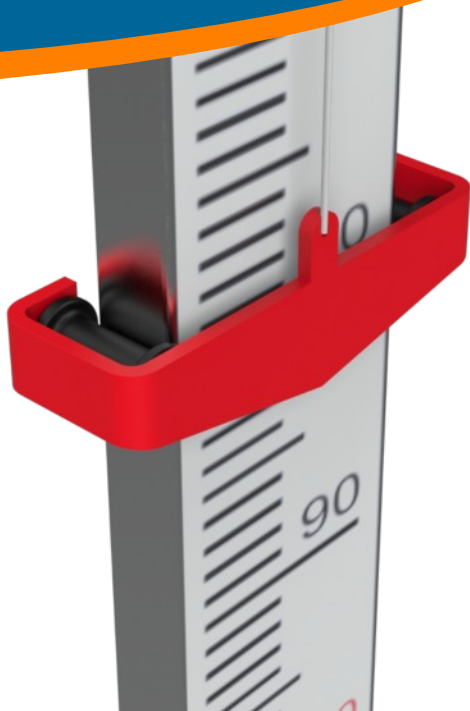


LiquiLevel STFB

Tank Level Indicator & Gauge Board for
Safe, reliable level monitoring



The only Float and Board tank level indicator to show the actual tank level, unlike other gauges that read back-to-front!

This visual tank level gauge when installed together with **LiquiLevel STXL** is used to measure and indicate liquid levels in industrial facilities for water, water treatment, fire fighting storage tanks, Rainwater harvesting and power generation. This level gauge is mostly used in checking storage, maintaining constant water levels, and measuring certain amounts of liquids in batch processes.

Application

- Water storage: Rainwater, waster water, drinking water, elevated water storage tank
- Power plant: Water and distillation tank
- Fire fighting water tanks for industrial and commercial buildings
- Water treatment: waterworks and sewage facilities, waste water
- Food Industry: Beer, Liquor, soy sauce,
- Dam: water gauge, gate opening indicator.

Technical Specification

Range	The level indicator is available in 2 options. STXL level for tanks up to 5 mtrs & STXL fr tanks up to 10 metres
Travel	Full range
Tank Level Indicator	Stainless Steel 316
Max Temperature	80°C Polypropylene
Max Pressure	Atmospheric
Float	80mm \varnothing solid PP with cord fastener
Float cord/ wire	PP x 3mm \varnothing
Calibrated gauge board	100mm wide (4") aluminium with black/red graduations and numbers. Available in cm & mtrs or feet and inches
Level Indicator	Red powder coated steel with cord fastener
Pulley wheels	POM Nylon with stainless steel shaft
Gauge board Brackets	Stainless Steel 303
Gauge Board Length:	Supplied in 1 mtr lengths for cm and mtr, and 3' lengths for feet & inches
Tank top	Can be installed to tanks up to 35°
Counterweight	Stainless steel 316

LiquiLevel STFB

Tank Level Indicator & Gauge Board for
Safe, reliable level monitoring

- Simple visual level gauge using a weighted balance/level indicator to be read in either cm/mtrs or inches/feet units.
- Designed for easy and quick installation to storage tanks on-site with minimum DIY knowledge and minimal tools.
- Simple calibration.
- When installed with LiquiLevel STXL tank level indicator, it will always indicate the actual water level in the tank, unlike other gauges which read back-to-front.
- Aluminium gauge board profile with stainless steel brackets and fixings designed for long trouble-free life.

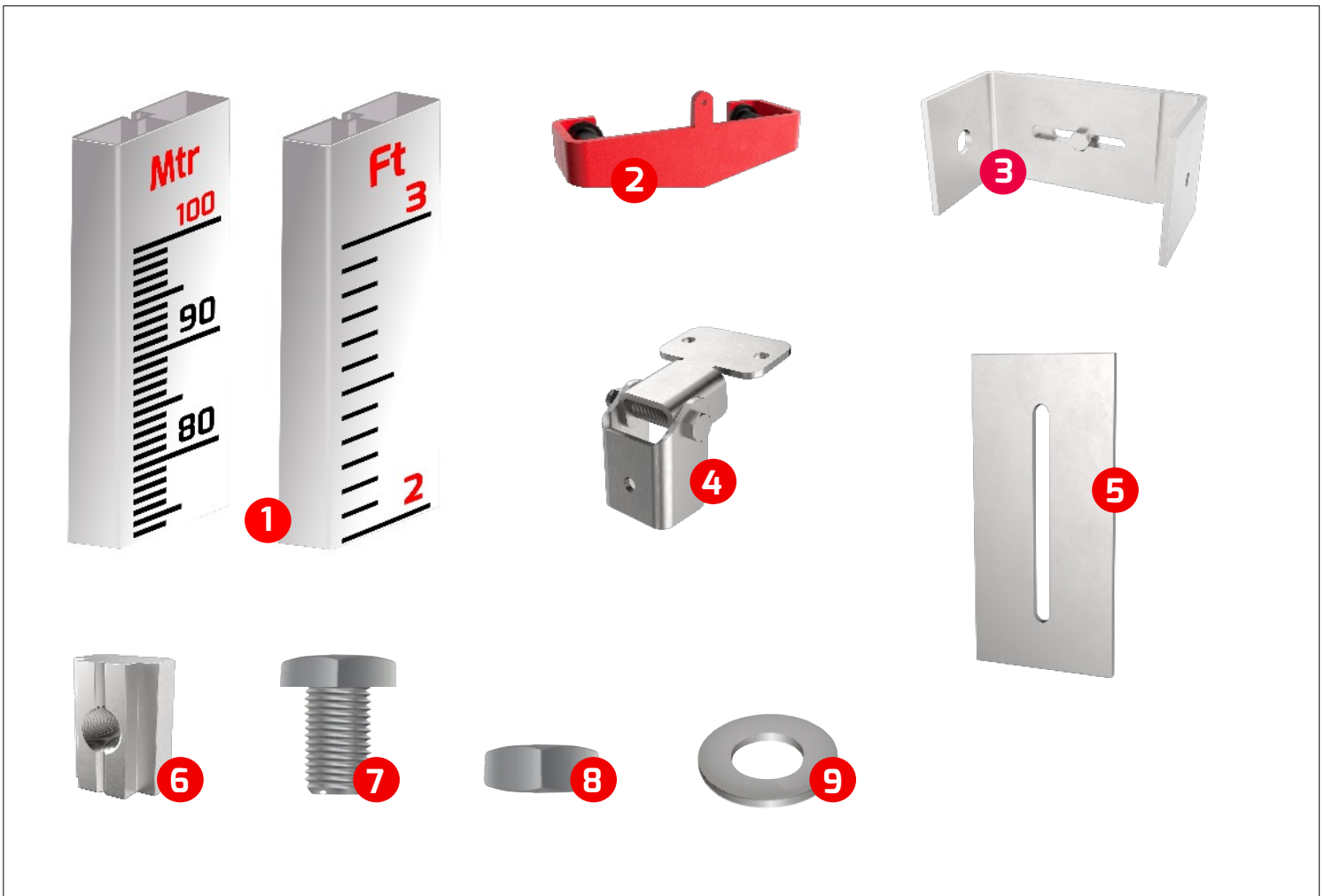


STFB Tank level indicator float on the surface of the liquid in the tank floats at a certain submerging depth where the weight of the float, the buoyancy of the float, and the tank counterweight and level indicator maintain their equilibrium. Measured levels are indicated by the external red level indicator which will always show actual water level within the tank as well as measurements in either imperial or metric measurements (cm/inches)



Technical Specification

1. Pulley housing in stainless steel. This is installed at the top of the tank and is designed for flat and angled tank tops of up to 35°. The pulleys are installed inside the housing and are protected from the elements for a trouble-free operation.
2. Polypropylene 80mm diameter float with cord fastener for easy and quick installation.
3. Stainless steel 316 counterweight that is connected and finely balanced to both the level indicator and the float, ensuring the Level indicator always shows the accurate and true level of the fluid in the tank.
4. Red stainless steel, powder coated level indicator with heavy duty rollers for smooth operation up and down the gauge board.



Gauge Board Components

No: Product description	Qty per system	Qty per 3'/ 1mtr	Aluminium	St. Steel
1. Gauge board with calibrated level marking.		1	●	
2. Powder coated level indicator.	1			●
3. Adjustable Gauge board & Tank Bracket.	1			●
4. Adjustable indicator & gauge board bracket.		1		●
5. Gauge Board connector		2		●
6. M6 Tee nuts.		3		●
7. M6 x 14mm Hex Bolt		6		●
8. M6 Hex Nut		3		●
9. Plain Washer		5		●

The liquilevel STGB Gauge board system is supplied in kit form designed for simple and quick assembly to storage tanks on-site. Full installation and instruction manual is supplied with all LiquiLevel tank level indicators to cover installation of Level indicator to your storage tank. This manual explains the installation of the Gauge board to your storage tank.

Gauge Board

Article number: 11023. Cm and metres

Article number: 11023. Inches & feet

The Gauge board is available in 2 options:-

A) Metric CM and Metres. Length of each gauge board: 1 mtr

B) Imperial inches and feet. Length of each gauge board: 3'

The Aluminium gauge board has been specifically designed for visual tank level monitoring. Strong, and weather resistant this gauge board is lightweight yet very strong and durable making installation safe and simple.

Fixing brackets and fixings to the gauge board is simple thanks to the slotted rail on the reverse side of the gauge board. Everything is fixed to the gauge board using this rail system and M6 tee nuts.

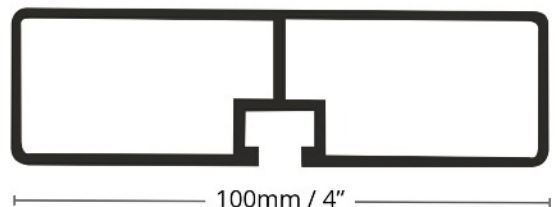
No fixings protrude through the face of the gauge board ensuring smooth running of the level indicator up and down the gauge board.

Gauge board with: 100mm / 6"

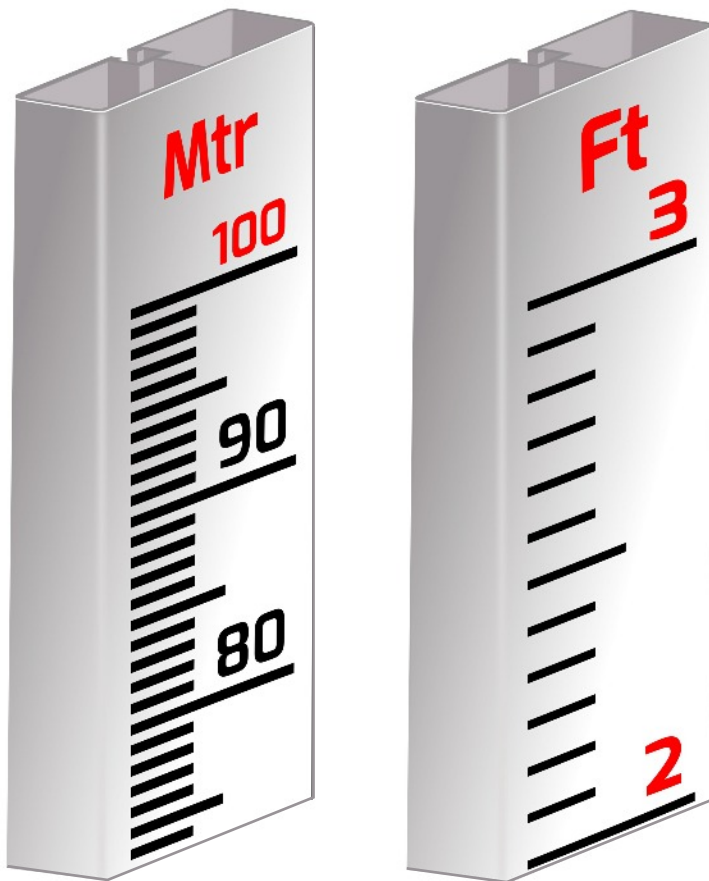
Gauge Board Fixings

All brackets including the level indicator are installed using a M6 Tee nuts designed to fix to the back of the gauge board for quick installation on site.

Tee nuts are supplied with the installation pack.



Ribbed design adds strength and durability to the aluminium profile.



Back of Aluminium gauge board showing M6 tee nut which can slide and be fixed at any point along its length.



Technical Specification

Product	Metric	Imperial	Note
Gauge board article number	11023	11024	
Installation pack article number	11033		
STXL Tank level indicator system	10080 for tanks up to 5 mtrs/16' high	10085 for tanks up to 10 mtrs/32' high	Sold separately
Measuring Range	0 - 10mtrs	0 - 33'	
Gauge Board Length	1mt / 1000mm	3'	
Gauge Board width	100mm	4"	
Gauge Board Depth	30mm	1 1/8"	
Net weight per Gauge Board	1.4 kg per 1mtr/3' length		
Material	Aluminium		
Calibration markings and numerals	Vinyl cut heavy duty label to suit both metric and imperial systems		
Level Indicator	5mm thick laser cut & folded stainless steel plate with Red powder coated finish		
Level indicator bearings	Black heavy duty Nylon roller with stainless steel shaft/screw		
Fixing method	brackets and gauge board profile uses M6 channel tee nuts		
Brackets	Stainless steel		
Fixings	Stainless steel		
Tank bracket adjustment	+/-50mm/2"		
Fixing Size	M6		
Spanner/ratchet size: mm	10		
Tank cover/top	90° - 130°		