

LiquiLevel

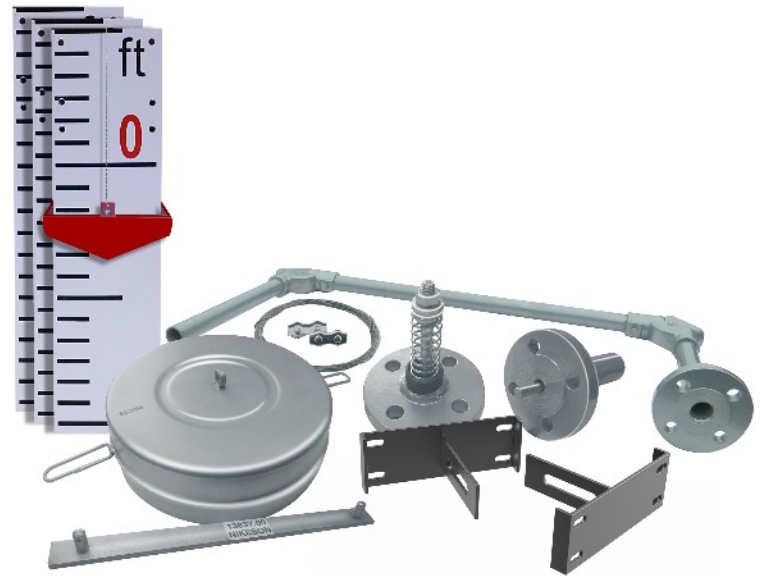
TANK LEVEL INDICATORS

FB Tank Level Indicator Industrial series

LiquiLevel FB series tank level indicators are easy to install, and offer a economical solution where a reliable mechanical liquid level indicator is required on bulk storage tanks operating under atmospheric or low pressure. The system is assembled on-site, and installed to both new and existing tank installations.

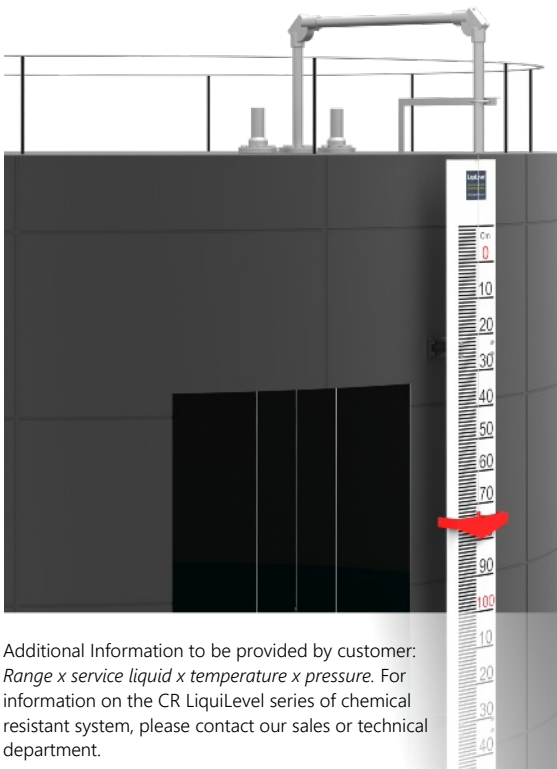
- Durable Aluminium powder coated gauge board in white with black graduations and numbers
- Level indication in both Ft. And inches (imperial) or metric mtrs and centimetres.
- Accurate to 5cm.
- Guided float as standard. Unguided float available on request

The FB system consists of a float connected to a an external tank level indicator via a cord and a set of pulleys. The indicator has nylon roller glides which enables the indicator to ride smoothly up and and down the gauge board which is positioned parallel to the tank. The float accurately follows the liquid variations in the tank. The horizontal float movement is restricted by two guide wires firmly anchored to the tank base. When the indicator as at the top position when the tank is empty and the bottom position when the tank is full. The gauge board is supplied in 1 metre lengths and multiple gauge board are connected by bracket joiners as per the ordered measuring range.



TECHNICAL SPECIFICATION

Range	Guided up to 7.5 mtr with 200mmø float and 15 mtr with 350mmø float
Travel	Full range
Graduations	5 mm
Max Temperature	150°C stainless steel, 80°C Polypropylene
Max Pressure	Atmospheric
Float	SS304/SS316
Float cord/ wire	SS304/SS316 x 1.6mmø multistrand, PP x 3mmø
Calibrated gauge board	150mm wide (6") aluminium powder coating with black/red graduations and numbers
Level Indicator	Red powder coated steel with cord fastener
Protection conduit	Vertical and horizontal pipe in galvanised steel pipe Vertical pipe - 20NB x 285mm & 295mm (2 No:s) Horizontal pipe - 20NB x 650mm long (1 No)
Pulley Elbow	Cadmium plated steel with PTFE bush and stainless steel shaft housed in weatherproof enclosure
Guide Wire Tensioners	Cadmium plated steel spring housed in CS
Float Anchor	1 weldable SS304/SS316 plate 25mm x 6mm thick
Float cord fixings	SS304/SS316
Gauge brackets	Powder coated steel
Alarm (optional)	Micro-switch - 5A 230 V in ABS enclosure (IP65)



Additional Information to be provided by customer:
Range x service liquid x temperature x pressure. For information on the CR LiquiLevel series of chemical resistant system, please contact our sales or technical department.

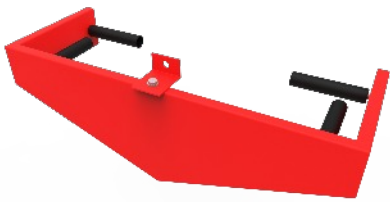
LiquiLevel

TANK LEVEL INDICATORS

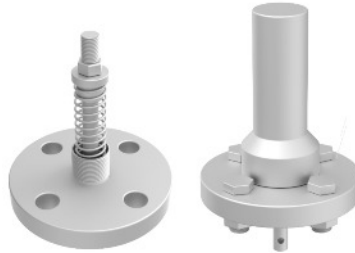
FB Tank Level Indicator Industrial series

The LiquiLevel FB system is assembled and packaged and shipped safely to customers around the Globe. We use only high quality materials for this system and can build a solution for almost any Bulk Storage Tank requirement. We supply the complete system ready to install on-site or can offer individual components to meet the specific requirements of our customers.

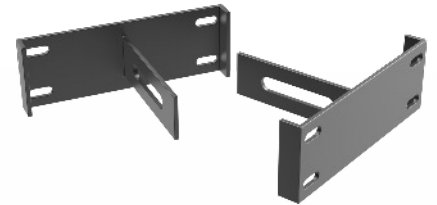
MAIN COMPONENTS



Heavy duty powder coated steel gauge board level indicator with nylon rollers for smooth and accurate operation of the indicator.



Powder coated steel spring tensioners for tensioning guide wire for smooth operation of the float. Flange PN20 x 3/4" BSP. Tension assembly fully enclosed for maximum protection.



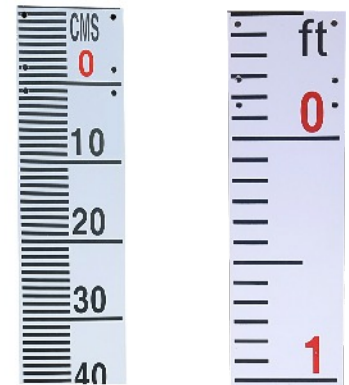
Gauge Board brackets made from steel. Used for both joining the brackets together and for fixing gauge board back to storage tank.



Cadmium steel powder coated 90 degree pulley elbows complete with inspection cover for maintenance and inspection. Connection size: 3/4" Other material available on request.



Stainless steel 303 float complete with guide wire lugs for guiding float up and down the guide wire system for smooth accurate operation.



Gauge Boards in powder coated white aluminium profile with vinyl cut out calibrations in either metric or imperial. Pre drilled hole for mounting gauge board brackets.

The LiquiLevel FB system operates accurately using stainless steel braided wire which is supplied with each system. BZP fasteners and full instruction manual and user manual provided. Level switches can also be installed to the gauge board for switching of pumps, controls and alarms.



Conduit pipe to connect the system together is made from powder coated galvanised steel pipe work in 3/4" BSP. Conduit dimensions can change depending on customers tank connections and pipe work configurations etc. For more info please contact our sales team.

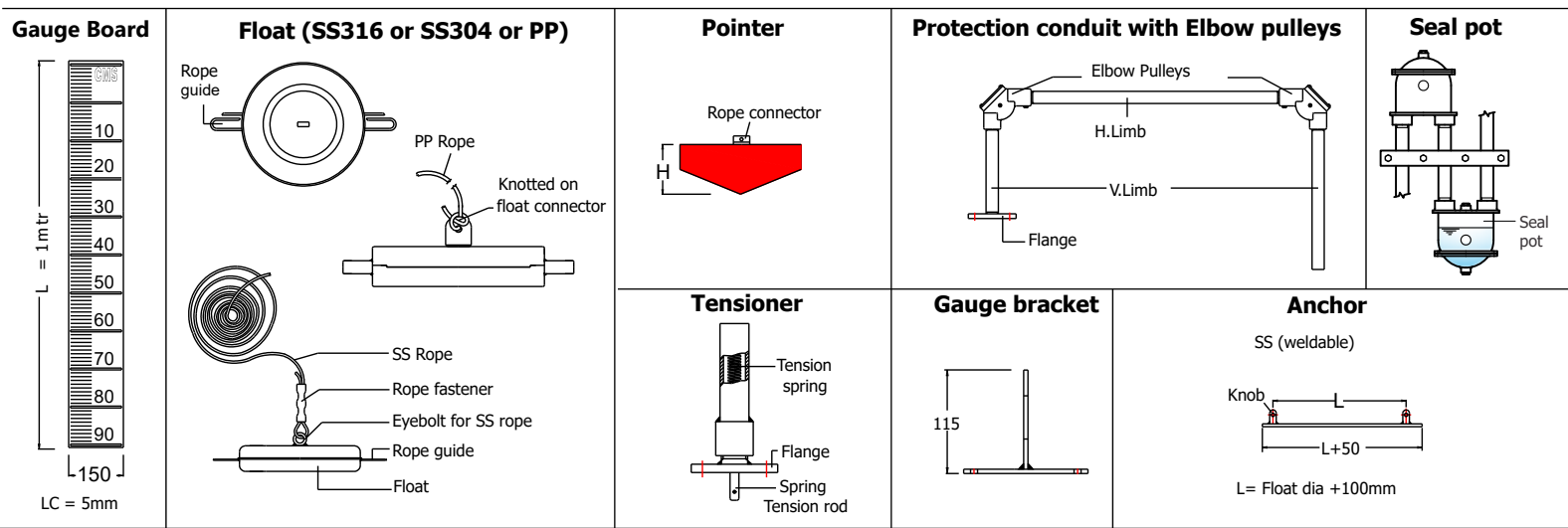


LiquiLevel FB System is packaged safely in cardboard cartons for maximum protection of the components and safely delivered to a wide range of customers around the globe. For projects involving a qty of units, we offer Box identification for ease of installation which is beneficial to the installer.

LiquiLevel

TANK LEVEL INDICATORS

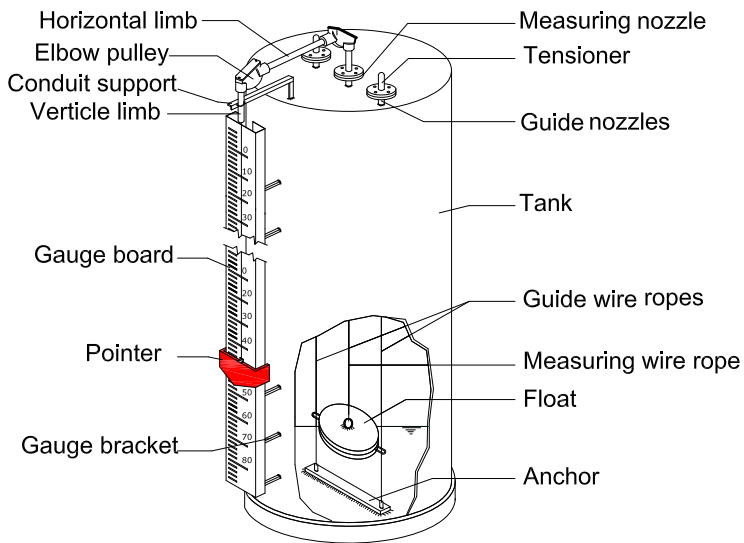
Components & Sub Assemblies



Installation

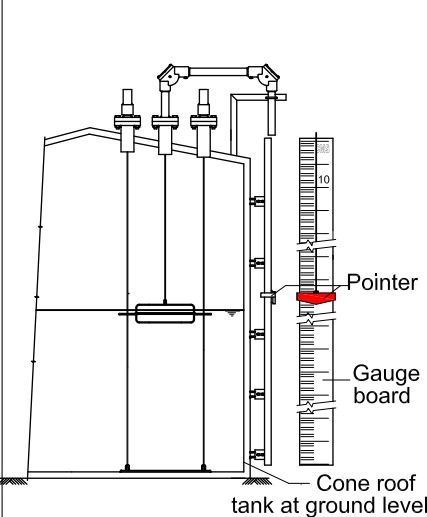
ASSEMBLY & INSTALLATION

Fig. 1



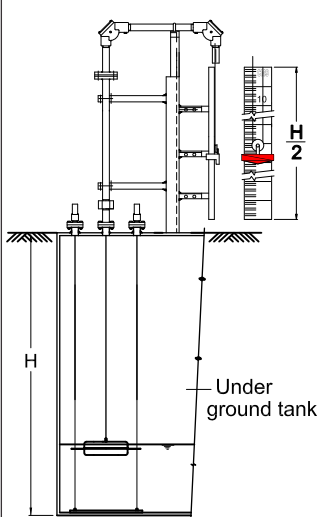
GUIDED CONSTRUCTION WITH FULL TRAVEL

Fig. 2



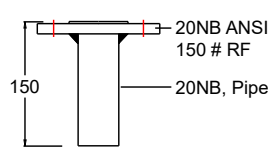
GUIDED CONSTRUCTION WITH HALF TRAVEL

Fig. 3

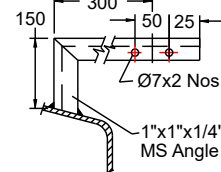


Components to be fabricated by 'customer'

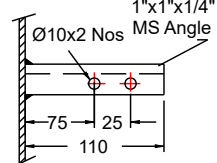
Guide/tank connection



Conduit support



Gauge bracket support



Model Identification

FB:

--	--	--	--	--

 X Range (mm)

Construction

Guided ————— G

Unguided ————— C

Float x Dimensions

SS 304 x Ø200mm ————— N1

SS 304 x Ø350mm ————— N2

SS316 x Ø200mm ————— S1

SS316 x Ø350mm ————— S2

PP x Ø200mm ————— P1

PP x Ø350mm ————— P2

Seal Pot

50mm WC ————— 1

200mm WC ————— 2

Without ————— W

Alarm Switches

Adjustable Microswitch x 1 ————— 1

Adjustable Microswitch x 2 ————— 2

Without ————— W

Installation

Ground Level Tank ————— G

Under Ground Tank (Sump) ————— U

Overhead Tank ————— H

FB : Full travel scale. FB(H) : Half travel scale