

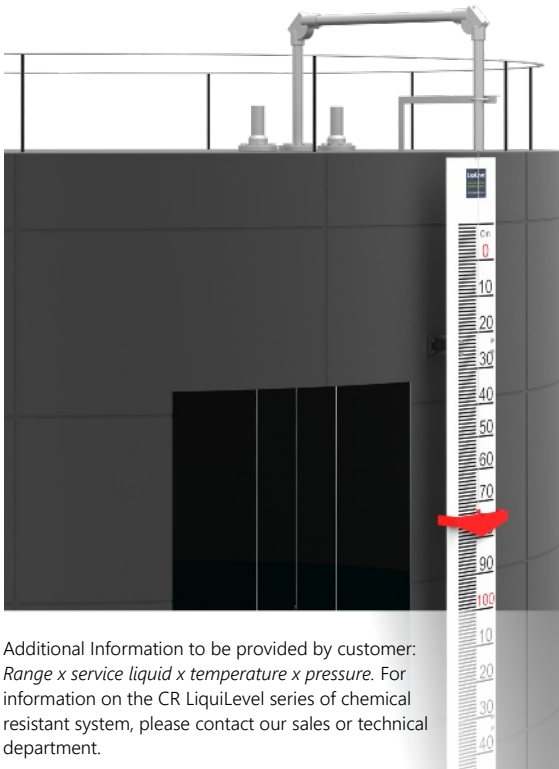
# LiquiLevel FBS

## TANK LEVEL INDICATORS

**LiquiLevel FBS series** tank level indicators are easy to install, and offer a economical solution where a reliable mechanical liquid level indicator is required on bulk storage tanks operating under atmospheric or low pressure. The system is assembled on-site, and installed to both new and existing tank installations.

- Durable Aluminium powder coated gauge board in white with black graduations and numbers
- Level indication in both Ft. And inches (imperial) or metric mtrs and centimetres. (Metric is standard)
- Accurate to 5cm.
- Guided float as standard. Unguided float available on request

The FBS system consists of a float connected to a an external tank level indicator via a cord and a set of pulleys. The indicator has nylon roller glides which enables the indicator to ride smoothly up and and down the gauge board which is positioned parallel to the tank. The float accurately follows the liquid variations in the tank. The horizontal float movement is restricted by two guide wires firmly anchored to the tank base. When the indicator as at the top position when the tank is empty and the bottom position when the tank is full. The gauge board is supplied in 1 metre lengths and multiple gauge board are connected by bracket joiners as per the ordered measuring range.



Additional Information to be provided by customer: Range x service liquid x temperature x pressure. For information on the CR LiquiLevel series of chemical resistant system, please contact our sales or technical department.

## FBS Tank Level Indicator Industrial series



### Technical Specification

Range	Guided up to 7.5 mtr with 200mms float for tank up to 10 mtr
Travel	Full range
Graduations	5 mm
Max Temperature	150°C stainless steel, 80°C Polypropylene
Max Pressure	Atmospheric
Float	SS304
Float cord/ wire	SS304 x 1.6mms multistrand, PP x 3mms
Calibrated gauge board	100mm wide (4") aluminium with black/red graduations and numbers. Available in cm & mtrs or feet and inches
Level Indicator	Red powder coated steel with cord fastener
Protection conduit	Vertical and horizontal pipe in galvanised steel pipe Vertical pipe - 20NB x 150mm & 150mm (2 No:s) Horizontal pipe - 20NB x 650mm long (1 No)
Pulley Elbow	Cadmium plated steel with PTFE bush and stainless steel shaft housed in weatherproof enclosure
Guide Wire Tensioners	Cadmium plated steel spring housed in CS
Float Anchor	1 weldable SS304/SS316 plate 25mm x 6mm thick
Float cord fixings	SS304
Gauge brackets	Adjustable Aluminium
Alarm (optional)	

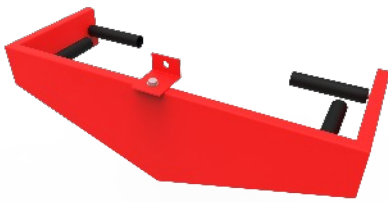
# LiquiLevel FBS

## TANK LEVEL INDICATORS

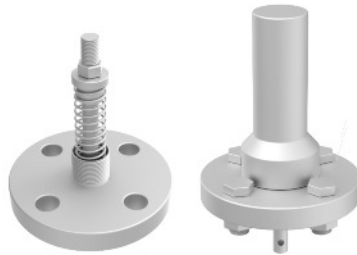
## FBS Tank Level Indicator Industrial series

The LiquiLevel FBS system is assembled and packaged and shipped safely to customers around the Globe. We use only high quality materials for this system and can build a solution for almost any Bulk Storage Tank requirement. We supply the complete system ready to install on-site or can offer individual components to meet the specific requirements of our customers.

### Main Components



Heavy duty powder coated steel gauge board level indicator with nylon rollers for smooth and accurate operation of the indicator.



Powder coated steel spring tensioners for tensioning guide wire for smooth operation of the float. Flange PN20 x 3/4" BSP. Tension assembly fully enclosed for maximum protection.



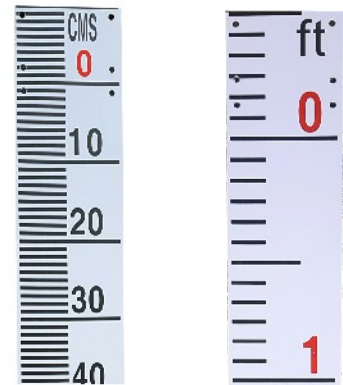
Gauge Board brackets made from SS316. Used for both joining the brackets together and for fixing gauge board back to storage tank.



Cadmium steel powder coated 90 degree pulley elbows complete with inspection cover for maintenance and inspection. Connection size: 3/4" Other material available on request.



Stainless steel 303 float complete with guide wire lugs for guiding float up and down the guide wire system for smooth accurate operation.



Gauge Boards in Aluminium profile (100cm wide/4") with vinyl cut out calibrations in either metric or imperial.

The LiquiLevel FBS system operates accurately using stainless steel braided wire which is supplied with each system. BZP fasteners and full instruction manual and user manual provided. Level switches can also be installed to the gauge board for switching of pumps, controls and alarms.



Conduit pipe to connect the system together is made from powder coated galvanised steel pipe work in 3/4" BSP. Conduit dimensions can change depending on customers tank connections and pipe work configurations etc. For more info please contact our sales team.



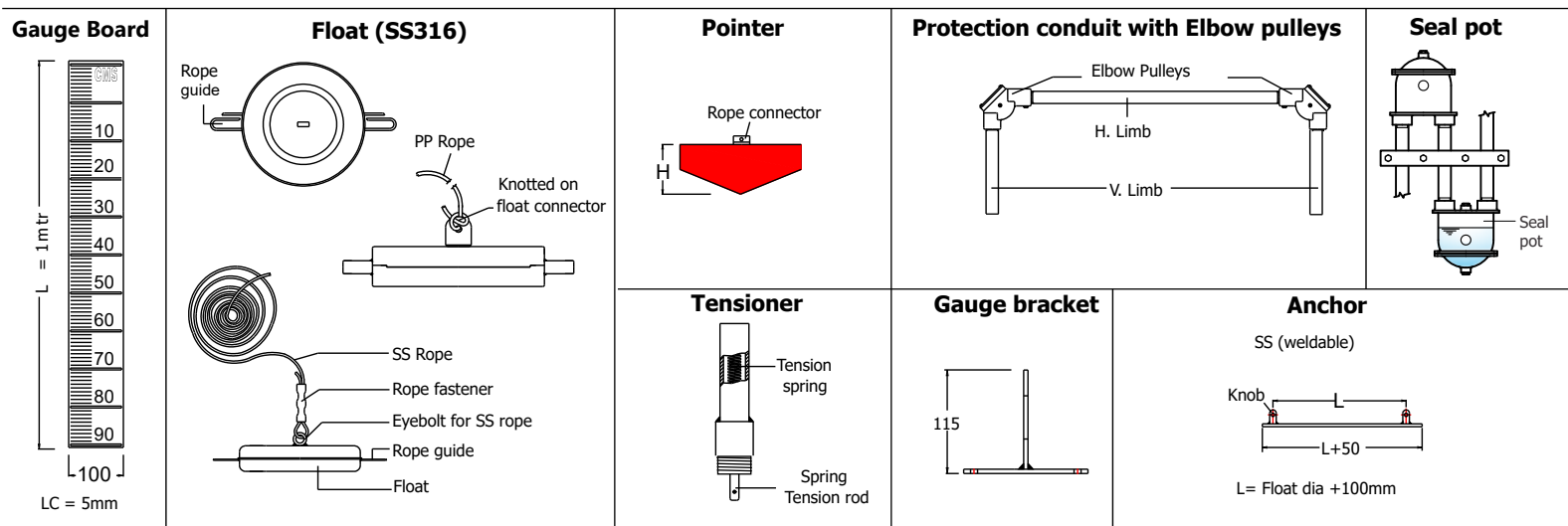
LiquiLevel FBS System is packaged safely in cardboard cartons for maximum protection of the components and safely delivered to a wide range of customers around the globe. For projects involving a qty of units, we offer Box identification for ease of installation which is beneficial to the installer.

# LiquiLevel FBS

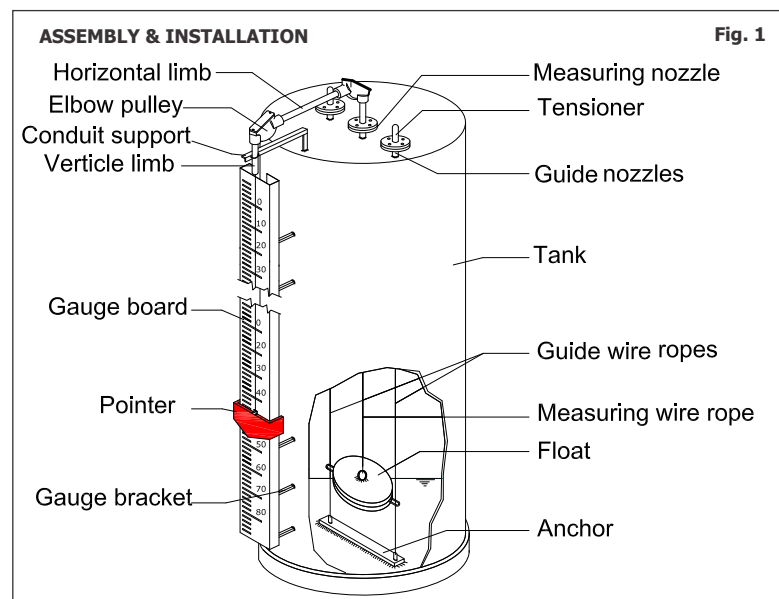
## TANK LEVEL INDICATORS

Components to be fabricated by 'customer'

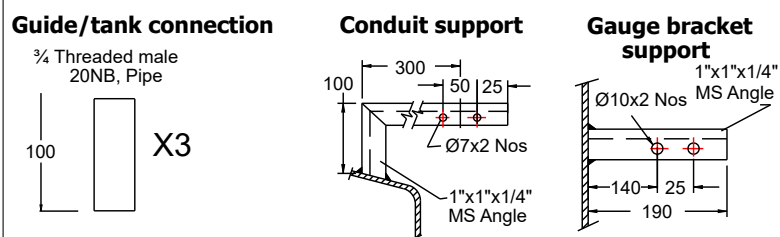
Components & Sub Assemblies



### Installation



### Components to be fabricated by customer



### Model Identification

