

LiquiLevel CR

LIQUID LEVEL INDICATORS FOR
CHEMICAL & PROCESS TANKS

The **LiquiLevel CR** tank level indicator system, allows easy and precise reading of the fluid level in your storage tank. Float system within tank is suspended by a cable, supported by 2 No: 90 degree PVC Elbow pulleys. Thanks to the counter pulley system, the volume of liquid in the tank is shown by a Red counterweight/level indicator inside vertical clear PVC pipe which is installed parallel to the tank. Recommended for virtually any liquid and tank.

Features

- PVC Pipe and fittings. Easy to install solvent weld system.
- Can be used with magnetic level control switches for pumps, alarms etc..
- Metric and Imperial systems
- No sidewall tank penetrations.
- Maintenance free.
- Fits standard PVC piping systems
- Gas/ Vapour tight.



Installation

The LiquiLevel CR tank level indicator system is supplied either as a complete kit ready for installation, or parts can be purchased separately for customer specific applications. Optional extras such as magnetic level switches and solid floats are available.

System

The CR LiquiLevel system uses 40mm pipe and fittings as standard. For larger tanks, we also offer a guide pipe 2" system.

System requirements

- 1x 40mm plain PVC solvent weld pipe adaptor connection at the top of the tank, 90 degrees to ground level.
- A tank access hatch of at least 150mm diameter is also necessary for installation of the float.

For more information on the LiquiLevel CR tank gauge system, please contact us Today!

LiquiLevel CR

LIQUID LEVEL INDICATORS FOR
CHEMICAL & PROCESS TANKS

LiquiLevel CR Tank level indicator Systems



LiquiLevel CR Basic system

The basic kit includes essential components with customer sourcing clear PVC pipe and pipe clips. Kit contents also include 40mm tank/bulkhead adaptor, 40mm pipe cap, Polypropylene cord for tanks up to 5 mtrs high.



LiquiLevel CR Basic system

The complete kit includes all Products to install The liquiLevel Tank level indicator into tanks up to 3 metres high, including 4x 1 metre lengths of 40mm PVC pipe, 3x 40mm PVC pipe connectors and 5x 40mm PVC pipe clips. Please note that 2 float options are available. Standard float is a 150mm diameter hollow Ball type. Option: 80mm diameter Polypropylene solid float.

LiquiLevel CR Tank level indicator components



90°Pulley elbow

PVC pulley elbow with anti-jump cord system, including pipe union. 2 required per tank.

Available in 40, 50mm & 1.25", 2"
Standard size: 40mm
Art. Nr: 10901



Red PVC Counterweight/Level indicator

30mm diameter Red PVC Counterweight with cord connector and built-in magnet for switching of alarms and controls etc. Designed for 40mm/1.25" clear tube

Art. Nr: 10915



Polypropylene Float Ball with eyelet

150mm diameter hollow ball float with Eyelet for cord. Float includes M8 fill point for adding weight to float

Art. Nr: 10913



Polypropylene Solid Float

45/80mm diameter Polypropylene cylindrical float with screw-on cord connector. 80mm supplied with all systems

80mm Art. Nr: 10914
45mm Art. Nr: 10930



PVC Bulkhead fitting

Tank adaptor fitting c/w tank seal.

Art Nr: 10920. 40mm x 1 1/2"
Art Nr: 10941. 1 1/4"x 32mm



Plexiglass - 40mm

40mm x 1 metre lengths. Connect together using 40mm PVC couplers
Wall thickness: 3mm

Stock number: 10985

LiquiLevel CR

LIQUID LEVEL INDICATORS FOR
CHEMICAL & PROCESS TANKS

LiquiLevel CR Tank level indicator components



Bistable Micro-switch for alarms and controls

Designed for use with LiquiLevel CR system for mounting externally on PVC guide tube. The changeover contact switches depend on the position of the Red PVC counterweight. Typical applications include limit value recording or 2-point control (min/max) on containers and storage tanks. 4...250V AC, 30 VDC

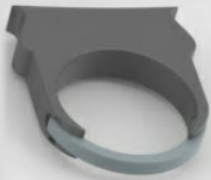
Art. Nr: 10990



Polypropylene cord

3mm diameter white 8 braided chemical resistant cord.

Art. Nr: 10908



PVC pipe clip

40mm PVC pipe clip for fixing guide tube to storage tank or vessel.

Art. Nr: 10924



90 degree pulley elbow

We can supply 90 degree elbow with own-branding label options. We offer design of label and supply of complete product to customer specifications. Label size: 30mm

Art. Nr: 10900

Your company Logo



Knowing the liquid level in your storage tank is vital. We recommend using LiquiLevel CR tank level indicator on all chemical and process tanks, as it offers optimum safety and protection of liquid. No batteries or electrical required. A simple, reliable mechanical tank level indicator offering instant check of liquid level at a glance. The LiquiLevel CR system is manufactured to a very high standard and can be adapted to most chemical tank applications. We offer both metric and imperial systems to suit a wide range of standard PVC pipe systems. For more information please contact us today. info@nikeson.com. Or call us +46 371 390110.

LiquiLevel CR

LIQUID LEVEL INDICATORS FOR
CHEMICAL & PROCESS TANKS

LiquiLevel CR Tank level indicator System

- Vapour tight cable operated level indicator.
- Easy to install
- Designed for viscous, aggressive and waste liquids
- Adjustable on site, easy to install
- For any tank height up to 3.5 metres tall
- No electrical or battery requirements

The System

Pulley are built in to PVC elbows with a special cable 'no jump' system. Elbows are glued on site to PVC tubes. The magnetic counterweight allows for easy tank monitoring and level reading. It is guided in a transparent PVC tube. Assembly is connected to the tank with a PVC 40mm solvent weld pipe coupling. Figure No:3

Components

A 40mm plain PVC solvent weld pipe adaptor connection at the top of the tank, 90 degrees to ground level. A tank access hatch of at least 150mm diameter is also necessary. 40mm pipe connector and clear PVC guide tube in 1 mtr Lengths.

2x 40mm PVC guide tube x 1 mtr length. **No:5**

1x 80mm PVC Solid float with cable connection. **No:8**

1x Ø 3mm x 5 mtr Polypropylene cable. **No:6**

2x 40mm 90 degree PVC Pulley elbows. **No:1**

1x magnetic counterweight. **No:4**

1x 40mm pipe socket. **No:10**

2x 40mm pipe unions. **No:2**

1x 40mm PVC end cap. **No:7**

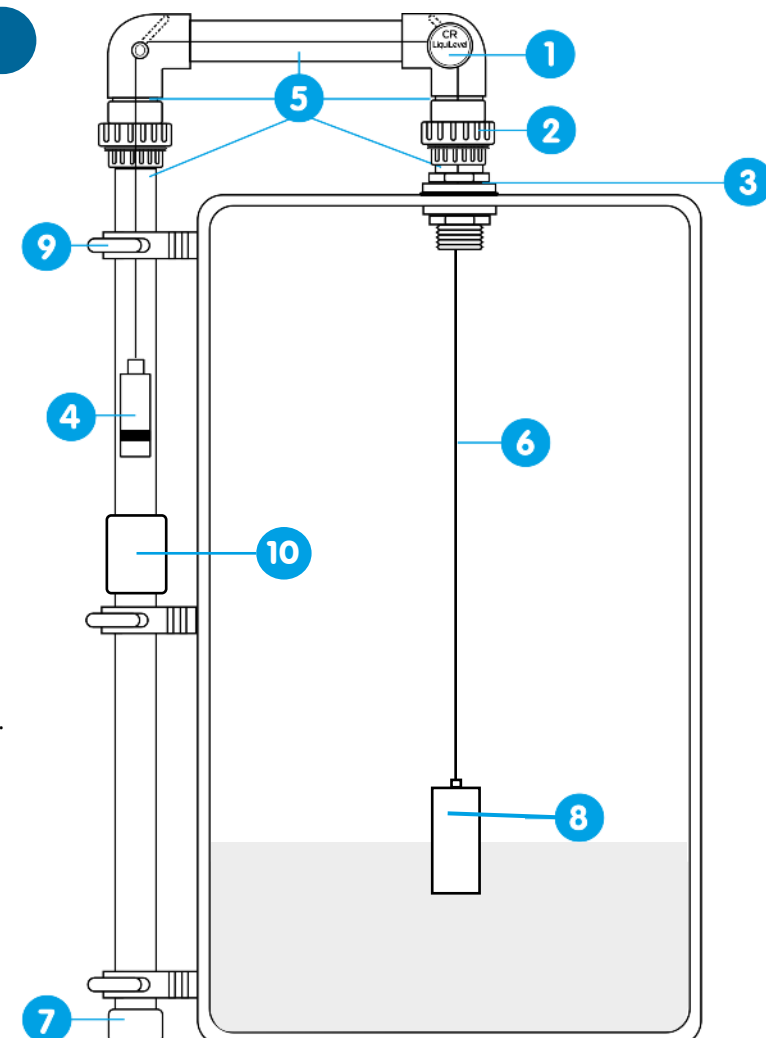
4x 40mm PVC pipe clips. **No:9**

1x 40mm Tank Adapter. **No:3**

Optional extras

- Magnetic level switches for operating controls, alarms
- 2" Guide tube system for tall tank
- Company branding on 90 degree elbow.
- We offer CAD drawings of component parts. Available on request.

We also offer a wide range of images for marketing purposes. Please contact us today.



LiquiLevel CR

GAUGE BOARD FOR SIMPLE RELIABLE
TANK LEVEL MONITORING

LiquiLevel CR Gauge Board designed for use with reverse float tank level indicator system (LiquiLevel CR) as a depth gauge/level indicator. Manufactured from glass reinforced plastic (GRP) making it ideal for a wide variety of applications including corrosive and aggressive environments.

High quality cut vinyl labels are applied for calibrated markings and numerals. Supplied in 1 mtr or 3 ft lengths, easily extended and cut to suit your tank height.

DESCRIPTION

- Manufactured from GRP Box section for added strength and durability, offering good chemical resistance.
- Simple and quick to install. Designed to clip on to the clear vertical level indicator pipe (40mm)
- Supplied in kit form in lengths (1mtr or 3 ft) complete joiners and fasteners.
- Designed for use with LiquiLevel CR reverse float tank level indicator system.
- Lightweight and durable

Gauge Board Dimensions:

Width: 80mm

Depth: 40mm

Lengths: 1000mm or 3 feet

Profile Thickness: 3mm



Stock No:	Description
10988	Gauge Board 80 x 40 x 1000 mm kit complete with Profile connectors and fasteners
10991	Gauge Board 3 1/8" x 1 5/8" x 3' kit complete with Profile connectors and fasteners

LiquiLevel CR

GAUGE BOARD FOR SIMPLE RELIABLE
TANK LEVEL MONITORING

LiquiLevel CR Gauge Board designed for a wide variety of applications where a visual level indicator is required. Available in both metric (fig 1.1) and imperial measurements (fig. 1.2) joining kits including fasteners are included.

The joining kit (fig 1.3) is made from PVC and is simply inserted inside the GRP gauge board profile and fastened with M6 slotted pan head screws. A 40 mm plastic pipe clip is included for fastening to level indicator guide tube.

Gauge boards can be extended to suit specific tank heights. All gauge boards are pre drilled for simple and quick installation of the joining brackets. (Fig 1.4)

All components are included for a easy and professional installation (Fig 1.5) of the gauge board.

Tools required for installation are:-

- Tape measure
- Big slotted screwdriver
- Hand saw to cut gauge board to correct length.

The LiquiLevel CR Gauge board has been designed for installation to the LiquiLevel CR tank level indicator. For more information on our products, please visit www.nikeson.com.

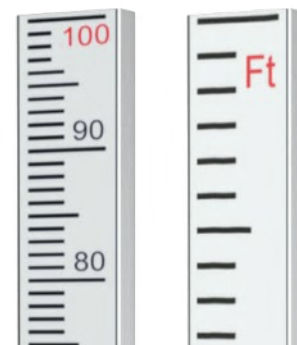


Fig. 1.1

Fig. 1.2



Fig. 1.3



Fig. 1.4

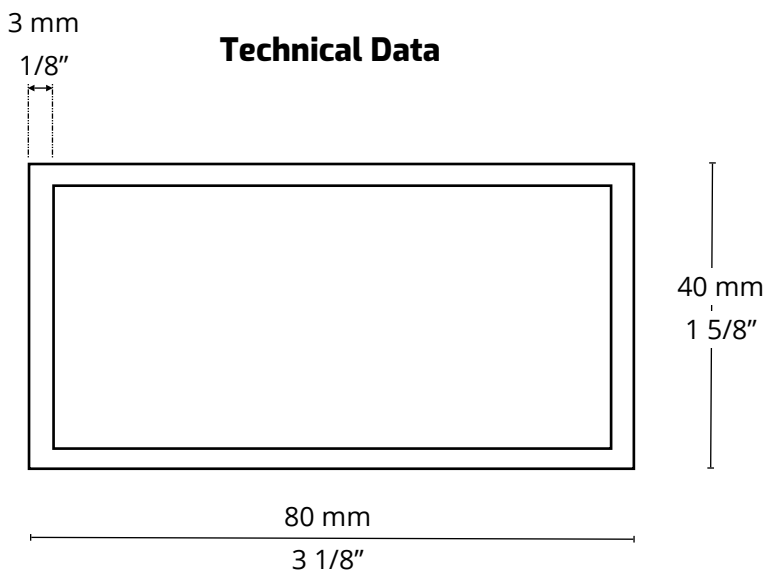


Fig. 1.5