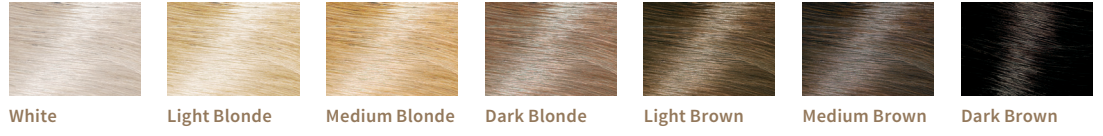


KHADI COLOR TABLE

NOTES BELOW



YOUR INITIAL HAIR COLOR



	White	Light Blonde	Medium Blonde	Dark Blonde	Light Brown	Medium Brown	Dark Brown
Senna / Cassia							
Golden Hint							
Light Blonde							
Sunrise							
Medium Blonde							
Dark Blonde							
Pure Henna							
Henna Amla & Jatropa, Red							
Golden Brown							
Light Brown							
Medium Brown							
Natural Hazel							
Ash Brown							
Dark Brown							
Black							
Pure Indigo							

1 Step 1: Pre-coloring (see table below) 30 = 30-minute exposure
 2 Step 2: Coloring with the selected shade 60 = 60-minute exposure time

Please note that the results dependent on your initial hair color, your individual hair structure and the exposure time.

Your selected khadi shade:	If pre-coloring is recommended (see image numbering), use the following khadi shade:
khadi Ash Brown	khadi Golden Hint
khadi Dark Brown	khadi Pure Henna
khadi Black	khadi Pure Henna
khadi Pure Indigo	khadi Pure Henna