

Mechanical Transplanter Co.
INSTRUCTION MANUAL
SUNUP Reflective Film Layer



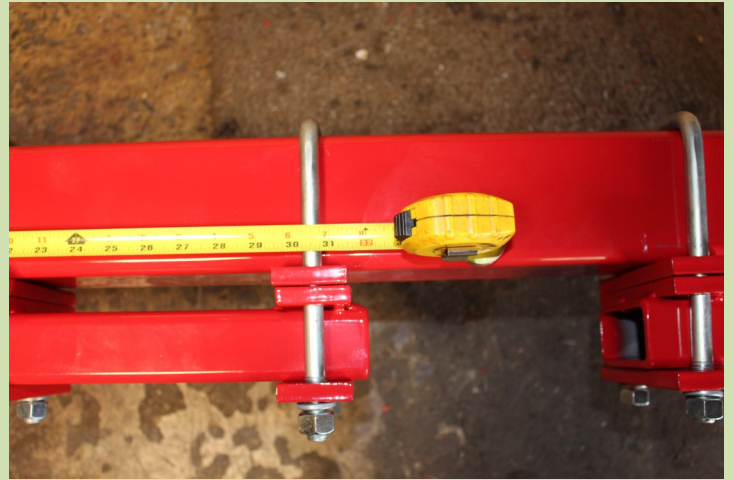
Mechanical Transplanter Co.

1150 Central Ave - Holland, MI 49423 * Phone 616-396-8738 * Fax 616-396-3619

Website: www.mechanicaltransplanter.com



60" Roll



1) Support 72" toolbar off the ground at least 16".

2) Attach roll adjustment arms to toolbar. Use the following measurements:

60" wide roll – 32" from each end

80" wide roll – 22" from each end

100" wide roll – 12" from each end

****Secure using the 5/8" long U-bolts, lock washers, and nuts. Must add 1 loose plate in the middle for a 1" gap. Use another securing plate to secure end of U-bolt



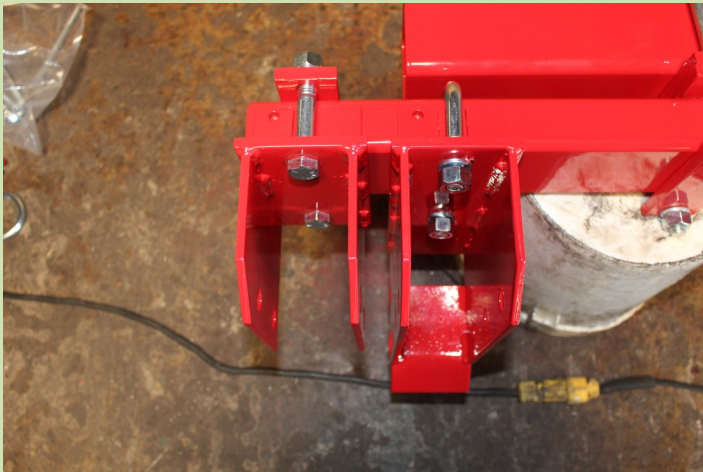
80" Roll



100" Roll



3) Attach short side arm clamp to roll adjustment arms. These are attached to the ends using the 5/8 x 4 bolts, securing plates, lock washers, and nuts.



4) Attach roll holding arm clamp $\frac{3}{4}$ " inside the side arm clamp. Secure with short 5/8" u-bolt, lock washers, and nuts.





5) Attach the pair of gauge wheels to the front toolbar. These are best set behind the tractor tires, but can be set almost anywhere.

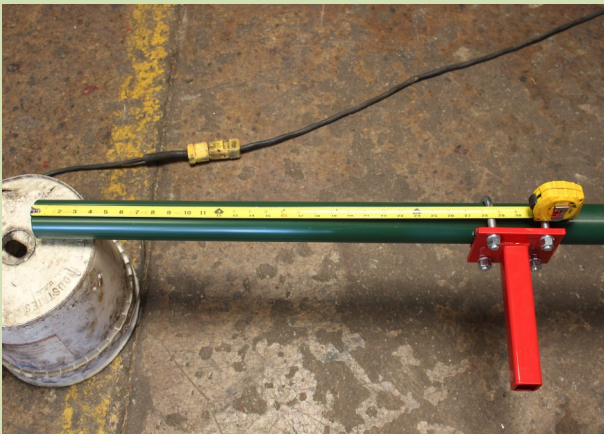
- A) Locate gauge wheel alignment bracket and place on toolbar
- B) Assembly gauge wheel tire to each bracket. Use two 7/8" narrow washers on the inside and one narrow washer on outside and lock in with cotter key.
- C) Place slotted gauge wheel bracket on alignment bracket.
- D) Secure with 1/2 x 6-1/2" bolts, flat washers, and nuts.
- E) Final height will have to be set in the field.



6) Attach long green side arm to side arm clamps. Use top hole with a 3/4 x 4-1/2" bolt and nylock nut.
 NOTE: We prefer to use only one bolt to allow side arms to float. Your heavier ground conditions may need extra bolts to lock arms, not included.



7) Attach rolls arms to clamp. Secure with $\frac{3}{4}$ x 4-1/2" bolt and nylock nut through silver bushing in arm. Leave nut a bit loose to allow arm to float up and down. Slip silver roll holder in roll arms. Large set collar will need to be adjusted depending on roll core.



8) Attach smooth wheel extension arm to green side arm 27-1/2" from end. Secure with round u-bolts, lock washers, and nuts.

9) Place smooth wheel holder on extension arm with round tube towards the rear. Secure with attached set screw about 1" from end.



10) Assembly smooth wheel to silver "L" shaped axle. Use a narrow rim washer and 7/8" set collar on both sides. Set wheel in center of axle shaft.

11) Place smooth wheel axles into smooth wheel holder. Fasten in place using the set screws leaving 5" out the top. The may have to be adjusted once in the field.



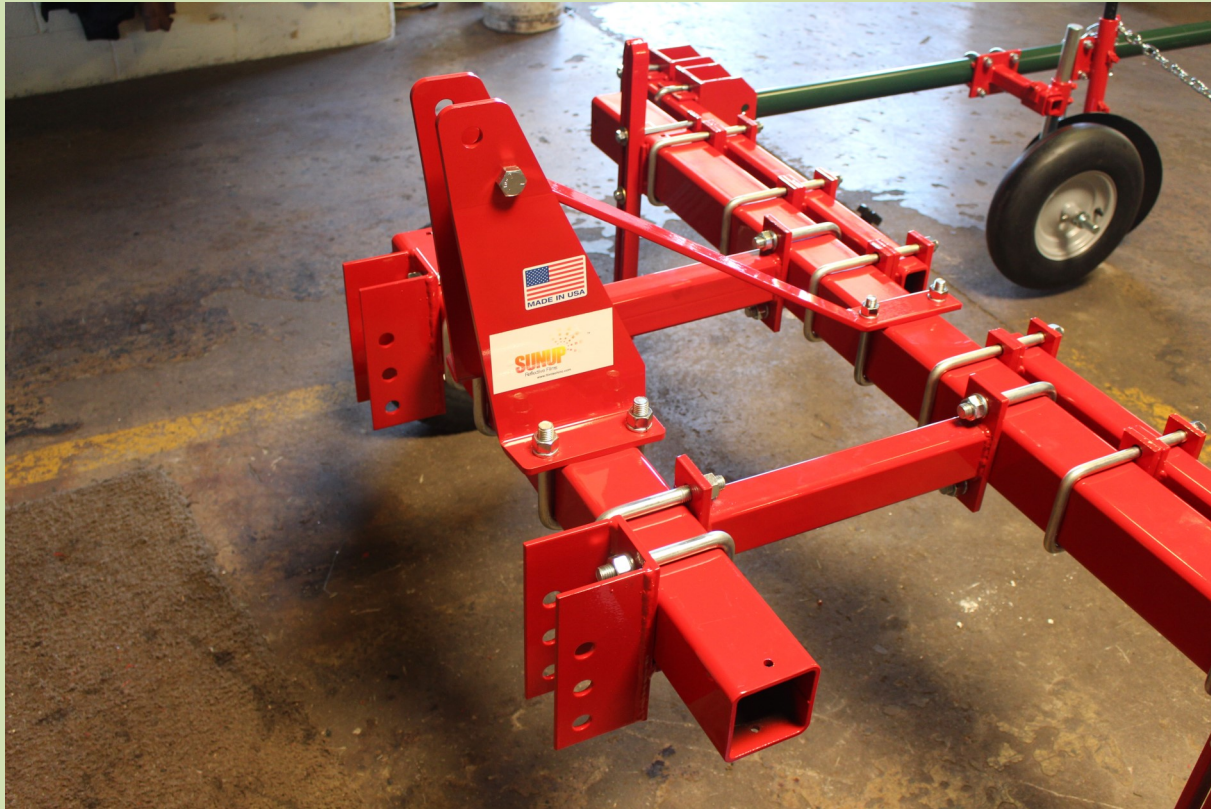
12) Attach covering disc mounting bracket to green side arm. This must be done 15" from the back side of the arm. Secure the front side with round u-bolts, lock washers, and nuts. Secure back side with the chain hook. Secure with ½" u-bolt and nuts.



13) Insert covering discs in disc mounting brackets. Leave about 5" of shank out the top of the tubing. This may need to be adjusted once in the field. Secure with set screws.



14) Attach chain across the back and into the chain hooks. The chain is long enough for up to a 100" wide roll. Tighten as much as possible. This can easily be taken loose to make it easier to get the new roll in place.



15) Mount 3 point stringers to the 6' toolbar. These should be mounting 9" left and right of center of the toolbar. Secure with $\frac{3}{4}$ " u-bolts, lock washers, and nuts.

16) Center 40" toolbar on stringers. Use $\frac{3}{4}$ " u-bolts, lock washers, and nuts.

17) Assemble the lower lift links on the short bar. For Cat. I hitches, mount these 13" left and right of center and Cat. II, 16". Secure with $\frac{3}{4}$ " u-bolts, lock washers and nuts.

18) Place the 3 point uprights centered on the toolbar. These should be about 2-1/2" apart at the top. Secure in place with $\frac{3}{4}$ " u-bolts, **BUT DO NOT TIGHTEN YET**. Attach the 3rd arm support from the uprights down to the 72" toolbar. Secure on the toolbar with a 5/8" u-bolt. Secure on the upright with a $\frac{3}{4}$ " x 4-1/2" bolts. Now tighten the uprights and the 3 arm support bracket.

Safety Precautions

1. Make sure tractor is stopped and in neutral with the transplanter lowered to the ground before getting on /off the unit.
2. No operator is allowed to be on the unit as it is raised and lowered.
3. No operator is allowed on the transplanter as it is transported to or from the field.
4. All operators must be seated before movement begins and remain seated until the transplanter is completely stopped.
5. Never leave the transplanter in the raised position
6. Keep all shields and guards in place when operating the transplanter.
7. Never attempt repairs or maintenance while the transplanter is in motion.
8. Never put the tractor in reverse while the transplanter is on the ground.
9. Follow all safety instructions supplied by the tractor manufacturer to which the transplanter is mounted.

MACHINE IMPROVEMENTS

MECHANICAL TRANSPLANTER CO. IS ALWAYS STRIVING TO MAKE IMPROVEMENTS ON THEIR LINE OF EQUIPMENT. MECHANICAL TRANSPLANTERCO. RESERVES THE RIGHT TO MAKE IMPORVEMENTS AND CHANGES AT ANY TIME WITHOUT INCURRING OBLIGATIONS TO MAKE SUCH CHANGES OR ADDTIONS TO EQUIPMENT PREVIOUSLY SOLD.

Limited Warranty

Mechanical Transplanter Company, LLC warrants each item of new equipment manufactured by Mechanical to be free from defects in material and workmanship under normal use and service.

The obligation of Mechanical Transplanter Company, LLC under this LIMITED WARRENTY is limited to repairing or replacing as Mechanical may elect, any parts that prove, in Mechanical's judgement, to be defective in material and workmanship within the first season's use of 45 consecutive days after initially placing equipment in operation, whichever occurs first. Any outside work or alterations without Mechanical's written approval will render the LIMITED WARRANTY void.

Mechanical's obligation specifically excludes any liability for consequential damages, such as loss of profits, delays, expenses, damage to goods or property used in connection with or processed in or by the product sold, or damage to the product sold from whatsoever cause, whether or not such loss is due to negligence of selling dealer of Mechanical Transplanter Company, LLC.

This limited warranty shall not apply to any item or machine which shall have been operated in a manner not recommended by the Company nor which shall have been repaired, altered, misused, damaged in an accident, neglected, tampered with or used in any way which in the Company's opinion adversely affects its performance and results.

No person is authorized to give any other warranties or to assume any other liability on behalf of Mechanical Transplanter Company, LLC unless made in writing by Mechanical Transplanter Company, LLC.

This limited warranty covers repair or replacement of Mechanical's equipment only and does not cover crop loss, downtime, labor, damage to other equipment, etc.

This limited warranty does not apply to exterior finishes, tires, chain links, bearings, or any other items sold by Mechanical Transplanter Company, LLC, but warranted by the original manufacturer except to the extent of their individual manufacturer's warranty.

THIS LIMITED WARRANTY IS IN LIEU OF ALL OTHER WARRANTIES, EXPRESSED OR IMPLIED. WARRANTIES OF MERCHANT ABILITY AND FITNESS FOR PARTICULAR PURPOSE ARE EXCLUDED, AS ARE ALL OTHER REPRESENTATIONS TO THE USER-PURCHASER, AND ALL OTHER OBLIGATIONS OR LIABILITIES, INCLUDING LIABILTY FOR INCIDENTAL AND CONSEQUENTIAL DAMAGES, ON THE PART OF MECHANICAL OR THE SELLER.