

Models CT-4 & CT-5 Parts List

22AL	Left axle for rear drive	641	Wide plant stand
22AR	Right axle for rear drive	645-CT5	Scalper blade with shank for CT-5
22CF	Frame for rear drive	649DCT	Diagonal shoe brace for CT-4 and CT-5
32S	Drive chain for rear drive (21 links)	649F	Front shoe brace
313	1/4x1-1/2" Cotter pin	649RCT	Rear shoe brace for CT-4 and CT-5
329	Pipe spacer between uprights	680	Front frame for CT-4
348	3/4" Lower shaft, 8" long	681	Pivot shaft
355	Lower sprocket	682	Coulter swivel mount
355T	Top sprocket for Model 1000 and CT-4	683	Coulter swivel post
362	Nylon bushing for 348 lower shaft	684	Top post collar
373	Chain tightener spring	685	Bottom post collar
374S	51S Attachment link	686	Coulter yoke
376S	Short tension spring	687	20" Coulter
377S 6CT	6 Pocket chain for CT-4	688	Coulter hub
378	5/16" U-bolt	689	Pipespacer
379	Upper conveyor sprocket for CT-5	690	Front frame for CT-5
380T	Top sprocket shaft	691	Front frame plate
381	7 Tooth spacing sprocket	692	Scalper bracket
382	8 Tooth spacing sprocket	693	Scalper bracket cross brace
383	9 Tooth spacing sprocket	726	"L" seat brace
384	10 Tooth spacing sprocket	735	3/4" U-bolts for units
385	11 Tooth spacing sprocket	1037	Front pipe stand
387	Marker blade	1909	Short pocket stabilizing bar
408CT	Dirt shield for shoe	1919	1-1/4" Oilite bearing for hub
416	3/4" Oilite bearing	2009	Long pocket stabilizing bar
423	Spring hook for row marker	FC167	5/16x2" Carriage bolt
434	7/8" Oilite bushing	FC205	3/8x3/4" Carriage bolt
436B	L-bolt for pocket guide	FC209	3/8x1" Carriage bolt
436RL	Pair of guides for CT-5	FC213	3/8x1-1/2" Carriage bolt
436RLX	Pair of guides for CT-4	FC335	1/2x1-1/2" Carriage bolt
440	Spring with UHMW rollers	FH159	5/16x1" Hex head cap screw
445	Double neoprene gripper	FH179	5/16x3-3/4" Hex head cap screw
450	Pocket main frame	FH189	5/16x5-1/2" Hex head cap screw
452	Pocket attaching bolt	FH209	3/8x1" Hex head cap screw
453	Pocket chain upright	FH213	3/8x1-1/2" Hex head cap screw
454	Galvanized rear drive spring clip	FH227	3/8x3-1/4" Hex head cap screw
460N	Floating clamp hitch for 2-1/2" diamond	FH239	3/8x5-1/2" Hex head cap screw
461	J-bolt for wheel sprocket	FH240	3/8x5-1/2" Hex head cap screw(special thread)
462	11 Tooth wheel sprocket	FH335	1/2x1-1/2" Hex head cap screw
520	Chain tightener arm	FH363	1/2x6" Hex head cap screw
521	Roll pin	FMB500	7/8" Machinery Bushing
522	Clip pin	FNH150	5/16" Hex nut
523	Clevis pin	FNH300	1/2" Hex nut
524	Cotter pin	FNW150	5/16" Wing nut
529	Scraper blade	FP213	3/8x1-1/2" Plow bolt
530	Scraper mounting bracket	FSC500	7/8" Set collar
636R	Red cushion seat bracket	FW300	1/2" USS flat washer
639	Rear drive packing wheel with sprocket	SP-6	6 Pocket chain spaing bar
640	16" Wide plant box	V-3D	Nylon roller pocket less spacing bar

Mechanical Transplanter Company, LLC

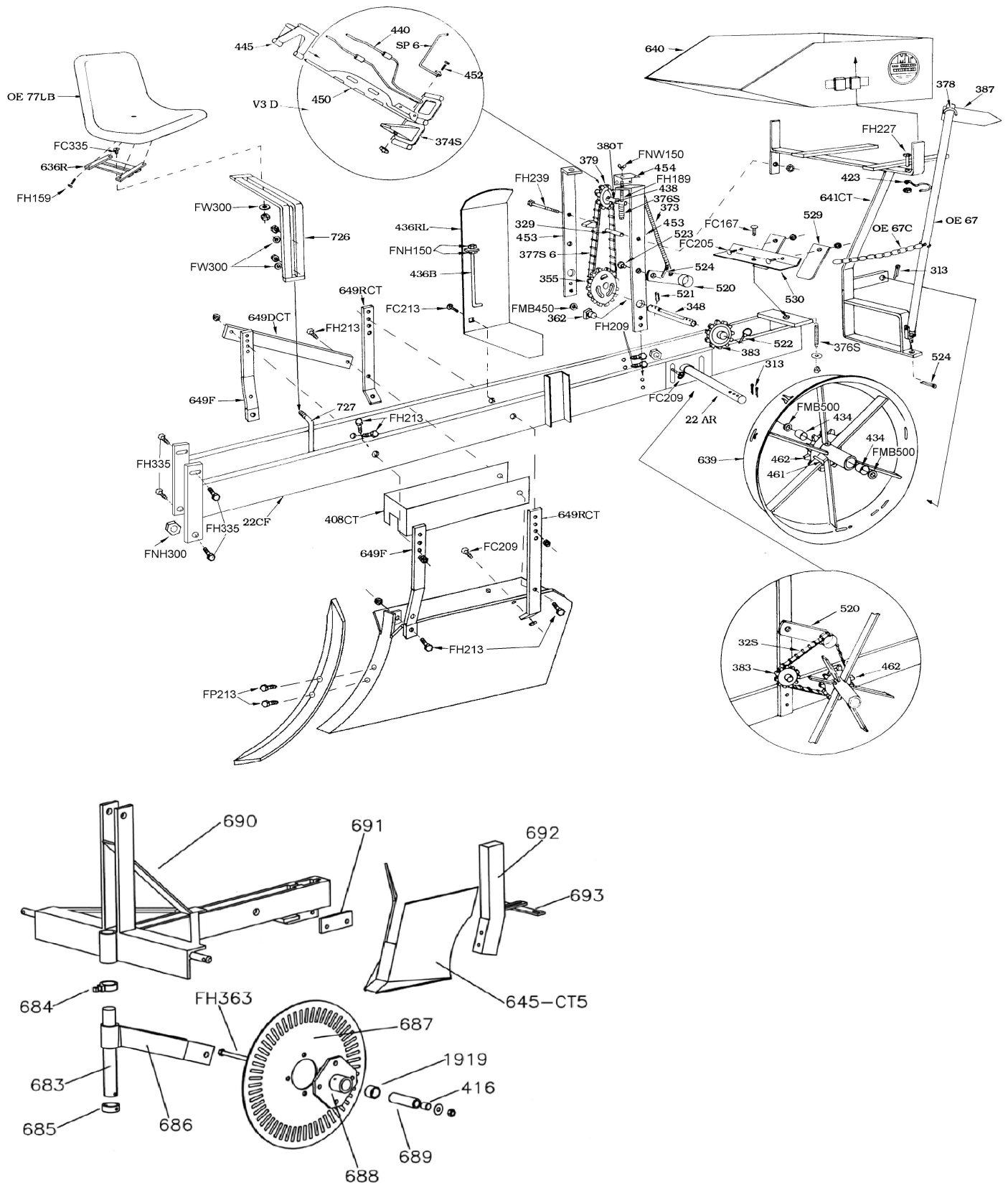
1150 Central Avenue

Holland, Michigan 49423

Phone: (616) 396-8738 * Fax: (616) 396-3619

www.mechanicaltransplanter.com * mtc@mechanicaltransplanter.com

CT 5 Parts Breakdown



Safety Precautions

1. Make sure tractor is stopped and in neutral with the transplanter lowered to the ground before getting on and off the unit.
2. No operator is allowed to be on the unit as it is raised and lowered.
3. No operator is allowed on the transplanter as it is transported to or from the field.
4. All operators must be seated before movement begins and remain seated until the transplanter is completely stopped.
5. Never leave the transplanter in the raised position.
6. Keep all shields and guards in place when operating the transplanter.
7. Never attempt repairs or maintenance while the transplanter is in motion.
8. Never put the tractor in reverse while the transplanter is on the ground.
9. Follow all safety instructions supplied by the tractor manufacturer to which the transplanter is mounted.

MACHINE IMPROVEMENTS

MECHANICAL TRANSPLANTER CO. IS ALWAYS STRIVING TO MAKE IMPROVEMENTS ON THEIR LINE OF EQUIPMENT. MECHANICAL TRANSPLANTER CO. RESERVES THE RIGHT TO MAKE IMPROVEMENTS AND CHANGES AT ANY TIME WITHOUT INCURRING OBLIGATIONS TO MAKE SUCH CHANGES OR ADDITIONS TO EQUIPMENT PREVIOUSLY SOLD.

Limited Warranty

Mechanical Transplanter Company warrants each item of new equipment manufactured by Mechanical to be free from defects in material and workmanship under normal use and service.

The obligation of Mechanical Transplanter Company under this LIMITED WARRANTY is limited to repairing or replacing as Mechanical may elect, and any parts that prove, in Mechanical's judgment, to be defective in material and workmanship within the first season's use or 45 consecutive days after initially placing equipment in operation, whichever occurs first. Any outside work or alterations without Mechanical's written approval will render the LIMITED WARRANTY void.

Mechanical's obligation specifically excludes any liability for consequential damages, such as loss of profits, delays, expenses, damage to goods or property used in connection with or processed in or by the product sold, or damage to the product sold from whatsoever cause, whether or not such loss is due to negligence of selling dealer of Mechanical Transplanter Company.

This limited warranty shall not apply to any item or machine which shall have been operated in a manner not recommended by the Company nor which shall have been repaired, altered, misused, damaged in an accident, neglected, tampered with or used in any way which in the Company's opinion adversely affects its performance and results.

No person is authorized to give any other warranties or to assume any other liability on behalf of Mechanical Transplanter Company, unless made in writing by Mechanical.

This limited warranty covers repair or replacement of Mechanical Transplanter Co. equipment only and does not cover crop loss, downtime, labor, damage to other equipment, etc.

This limited warranty does not apply to exterior finishes, tires, chain links, bearings, or any other items sold by Mechanical Transplanter Co., but warranted by the original manufacturer except to the extent of their individual manufacturer's warranty.

THIS LIMITED WARRANT IS IN LIEU OF ALL OTHER WARRANTIES, EXPRESSED OR IMPLIED. WARRANTIES OF MERCHANT ABILITY AND FITNESS FOR PARTICULAR PURPOSE ARE EXCLUDED, AS ARE ALL OTHER REPRESENTATIONS TO THE USER-PURCHASER, AND ALL OTHER OBLIGATIONS OR LIABILITIES, INCLUDING LIABILITY FOR INCIDENTAL AND CONSEQUENTIAL DAMAGES, ON THE PART OF MECHANICAL OR THE SELLER.