

Mechanical Transplanter Company



Parts Book for Model CT-12

328	3/4" flange block	8435	Packing wheel securing plate
373	Spring for chain tightener	8436	Bracket support for packing wheels
379	Sprocket for chain tightener	8439	Left footrest
383	9 tooth sprocket	8440	Right footrest
434	7/8" oillite bearing	8441	40A20x1-1/2" sprocket
634U	1/2" U-bolt	8442	Pocket drive shaft
636	Cushion seat bracket	8443	10 tooth gear w/3/4" hole(bottom)
726	L-bracket for seat	8444	Pocket chain guard
726U	1/2" U-bolt for toolbar clamps	8445	Pocket chain bracket
738	1/2" U-bolt	8448	Right pocket guide
740	7/8" U-bolt	8449	Left pocket guide
1907	Pocket wire	8451	Right root shield
1908	Double neoprene gripper	8452	Left root shield
1919	1-1/4" oillite bearing	8455	Shoe brace
1974	Coulter hub only	8459	Pocket chain
1975	Inside pipe of coulter hub	8461	Pocket offset bracket
1991	55S pocket attachment link	8475	Rubber packing wheel
1993	9 tooth gear with bearing (top)	8476	Steel cement packing wheel
2009	Pocket stabilizing bar	8477	CT 12 plant box
8400	CT 12 planter frame	8478	Left drive chain bracket
8401	CT 12 toolbar	8479	Right drive chain bracket
8403	Category II pin	8480	Pocket complete w/stabilizer bars
8404	Weight bracket	8481	Pocket less stabilizer bars
8408	Drive wheel hub with sprocket	8482	Pocket chain tightener bracket
8409	Sprocket for drive wheel	8483	Pocket chain tightener sprocket
8410	Planter pipe stand	8485	CT-12 pocket frame
8411	CT 12 drive tire and rim	8490	CT 12 shoe only
8413	Clamp for pipe stand	8491	Hitch bracket for third arm
8416	Rod for pressure spring	8492	Dirt shield
8417	Pressure spring	8493	Shoe point only
8418	Sleeve for pressure spring	8494	Yoke mounting bracket
8419	Axle for drive wheel	8495	Yoke for coulter
8421	Plate for support bracket and drive axle	8496	Yoke spacer
8422	Drive wheel support	8497	32" Coulter blade
8423	17 tooth sprocket	8498	Yoke assembly for coulter
8426	Jackshaft	8499	Rear weight bracket
8427	51S drive chain	FH483	5/8x10-1/2" hex head bolt
8428	#40 roller chain for pocket drive	FMB650	1-1/4" machinery bushing
8429	L-shaped footrest bracket	FSC650	1-1/4" set collar
8430	Roller chain tightener sprocket	FW400	5/8" U.S.S. flat washer
8431	Left chain guard	FW650	1-1/4" U.S.S. flat washer
8432	Right chain guard	MT-AE	Left drop hitch bracket
8433	T-shaped plant box holder	MT-AF	Right drop hitch bracket
8434	L-shaped plant box holder	OE-77	Cushion seat with bracket

Mechanical Transplanter Co.

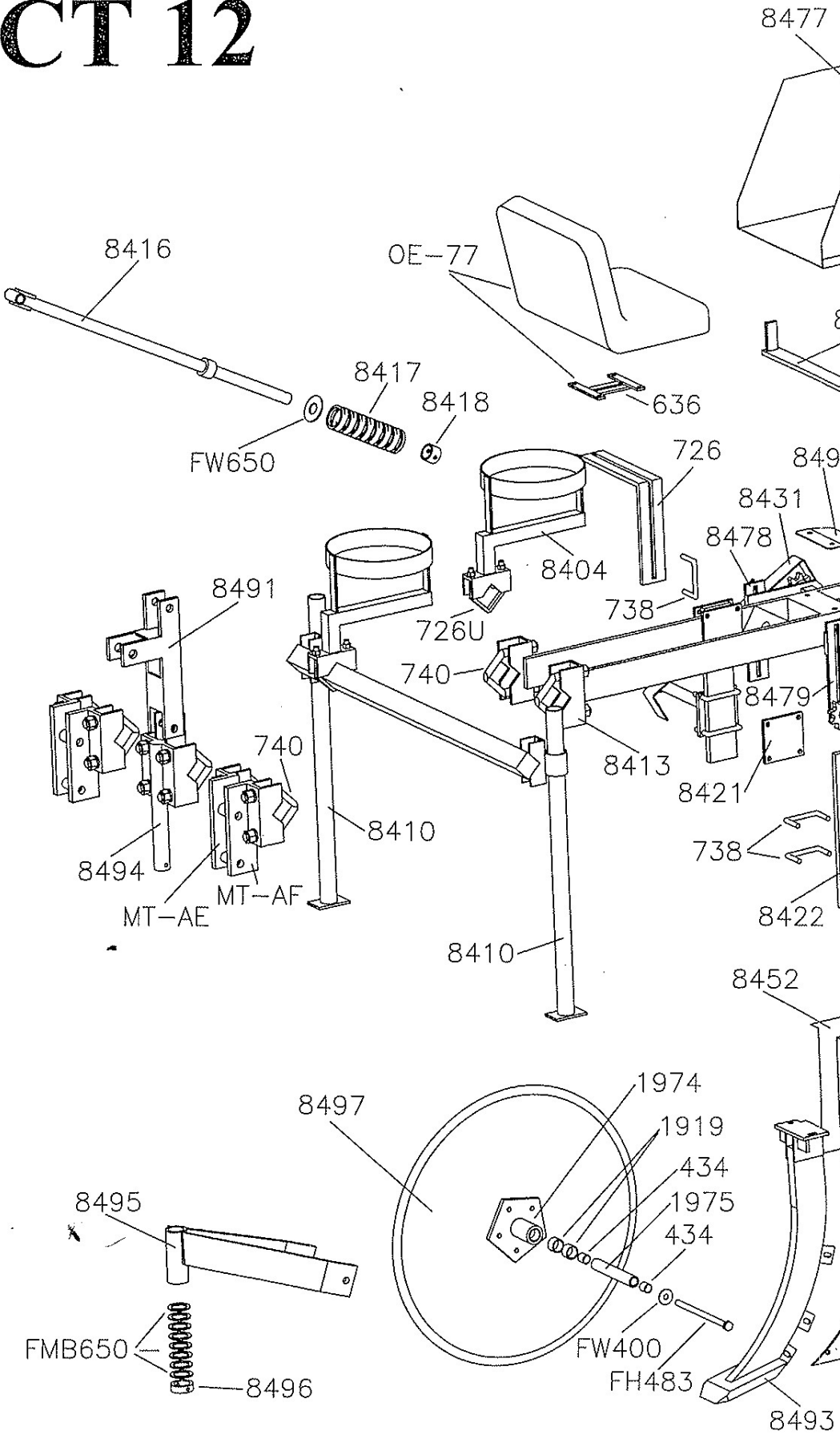
1150 Central Ave Holland, MI 49423

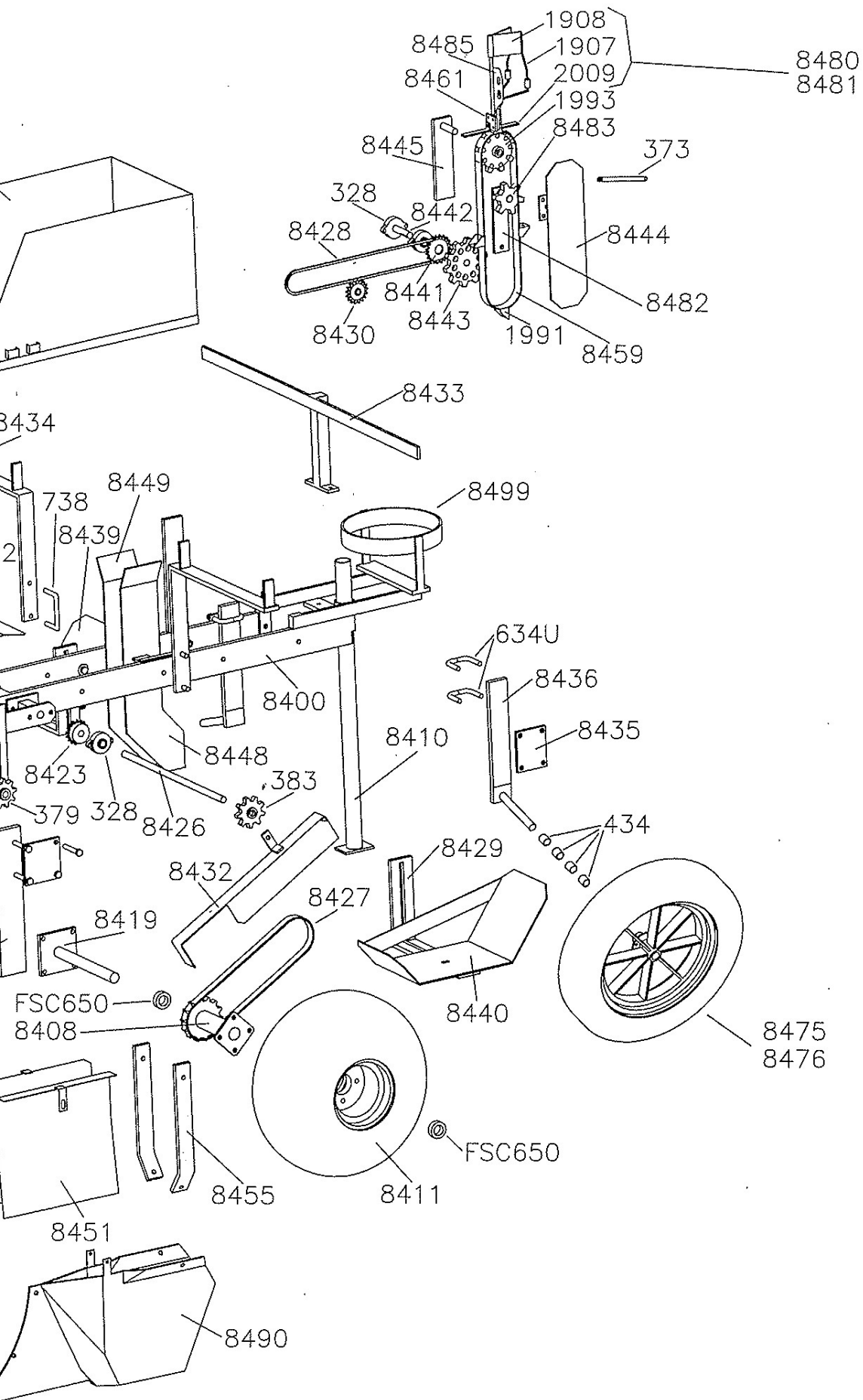
Phone 616-396-8738 ~ Fax 616-396-3619

Website: www.mechanicaltransplanter.com

E-Mail: mtcparts@egl.net

Model CT 12





Safety Precautions

1. Make sure tractor is stopped and in neutral with the transplanter lowered to the ground before getting on /off the unit.
2. No operator is allowed to be on the unit as it is raised and lowered.
3. No operator is allowed on the transplanter as it is transported to or from the field.
4. All operators must be seated before movement begins and remain seated until the transplanter is completely stopped.
5. Never leave the transplanter in the raised position
6. Keep all shields and guards in place when operating the transplanter.
7. Never attempt repairs or maintenance while the transplanter is in motion.
8. Never put the tractor in reverse while the transplanter is on the ground.
9. Follow all safety instructions supplied by the tractor manufacturer to which the transplanter is mounted.

MACHINE IMPROVEMENTS

MECHANICAL TRANSPLANTER CO. IS ALWAYS STRIVING TO MAKE IMPROVEMENTS ON THEIR LINE OF EQUIPMENT. MECHANICAL TRANSPLANTERCO. RESERVES THE RIGHT TO MAKE IMPORVEMENTS AND CHANGES AT ANY TIME WITHOUT INCURRING OBLIGATIONS TO MAKE SUCH CHANGES OR ADDTIONS TO EQUIPMENT PREVIOUSLY SOLD.

Limited Warranty

Mechanical Transplanter Company, LLC warrants each item of new equipment manufactured by Mechanical to be free from defects in material and workmanship under normal use and service.

The obligation of Mechanical Transplanter Company, LLC under this LIMITED WARRENTY is limited to repairing or replacing as Mechanical may elect, any parts that prove, in Mechanical's judgement, to be defective in material and workmanship within the first season's use of 45 consecutive days after initially placing equipment in operation, whichever occurs first. Any outside work or alterations without Mechanical's written approval will render the LIMITED WARRANTY void.

Mechanical's obligation specifically excludes any liability for consequential damages, such as loss of profits, delays, expenses, damage to goods or property used in connection with or processed in or by the product sold, or damage to the product sold from whatsoever cause, whether or not such loss is due to negligence of selling dealer of Mechanical Transplanter Company, LLC.

This limited warranty shall not apply to any item or machine which shall have been operated in a manner not recommended by the Company nor which shall have been repaired, altered, misused, damaged in an accident, neglected, tampered with or used in any way which in the Company's opinion adversely affects its performance and results.

No person is authorized to give any other warranties or to assume any other liability on behalf of Mechanical Transplanter Company, LLC unless made in writing by Mechanical Transplanter Company, LLC.

This limited warranty covers repair or replacement of Mechanical's equipment only and does not cover crop loss, downtime, labor, damage to other equipment, etc.

This limited warranty does not apply to exterior finishes, tires, chain links, bearings, or any other items sold by Mechanical Transplanter Company, LLC, but warranted by the original manufacturer except to the extent of their individual manufacturer's warranty.

THIS LIMITED WARRANTY IS IN LIEU OF ALL OTHER WARRANTIES, EXPRESSED OR IMPLIED. WARRANTIES OF MERCHANT ABILITY AND FITNESS FOR PARTICULAR PURPOSE ARE EXCLUDED, AS ARE ALL OTHER REPRESENTATIONS TO THE USER-PURCHASER, AND ALL OTHER OBLIGATIONS OR LIABILITIES, INCLUDING LIABILTY FOR INCIDENTAL AND CONSEQUENTIAL DAMAGES, ON THE PART OF MECHANICAL OR THE SELLER.