

# 803 4HF ASSEMBLY INSTRUCTIONS



1. Take bundle apart and lay all pieces out. Refer to the master packing list to insure all parts are included.

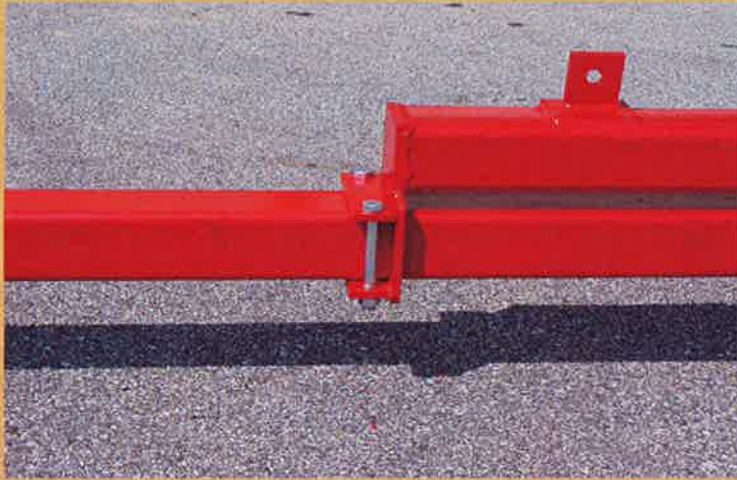
2. Set main frame on stands or blocks. Slide tongue through square plates under main frame.



3. Place two 1/2 x 1" safety bolts in holes on back of tongue. Hold bolts in place with lock nuts. Set tongue length to allow clearance of tractor ties when turning.



**# 4**



4. Secure tongue to main frame using 1/2 x 2 x 6" plate and two 5/8 x 6-1/2" bolts and lock washers.

**# 5**



5. Slide both axles into square plates under main frame. Secure axles to frame with two 1/2 x 2-1/2 x 6" plates and four 3/4 x 6" bolts and lock washers (Photo #5A). To plant on flat ground, spindles must be up. To plant on beds or for higher trailer profile, spindles must be in down position. Measure and set wheel centers.

**# 5A**

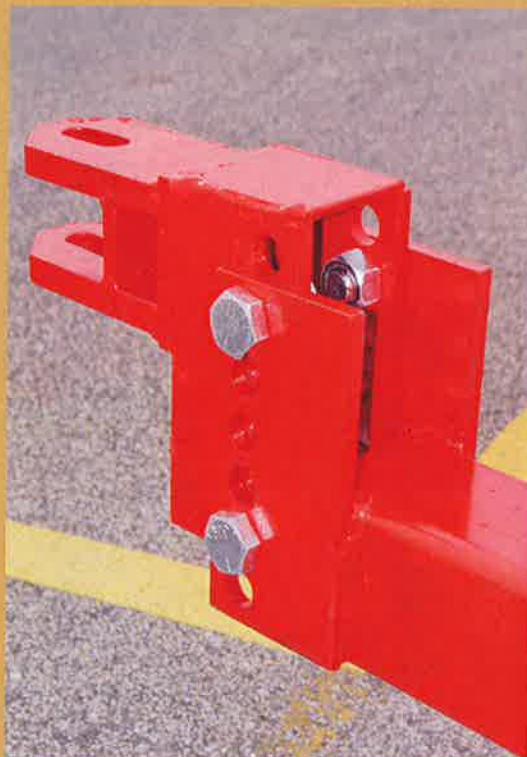


**# 6**

6. Fasten jack to tongue with clip ring.



**# 7**



7. Bolt hitch to end of tongue using four 7/8 x 2" bolts and lock washers. Bolt hitch on as shown to plant on flat ground and flip hitch over to plant on beds.

**# 8**

8. Bolt 11:00 x 15" tires and wheels to hubs using twelve 1/2" wheel studs.







**# 9**

9 Before cutting wire tie on 3-Point hitch, lay hitch on mainframe. Center and use four  $5/8 \times 2-1/2 \times 7$ " plates and four  $7/8 \times 10$ " bolts and lock washers to secure it to the frame.

**# 10**

10. Bolt hydraulic cylinder bracket to rockshaft using one  $7/8 \times 4$ " bolt and lock nut. The end with  $7/8$ " hole goes up and end with  $1-1/8$ " hole faces down toward ground.



**# 11**

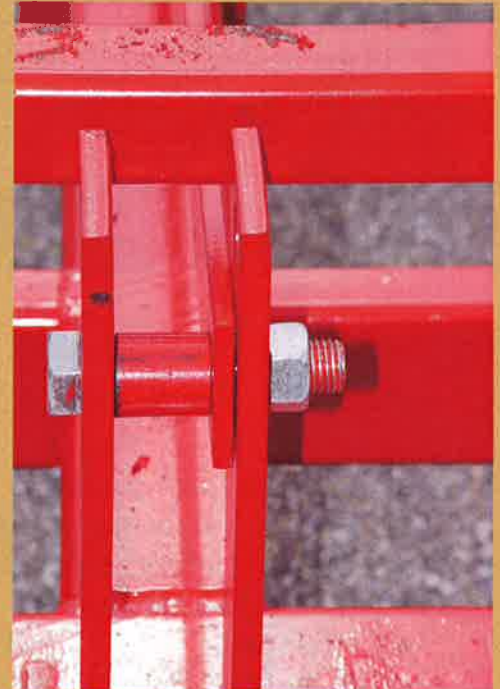
11. Loosen wire holding 3-Point Hitch up and let it drop down carefully.





# 12

12. Install support brace from 3-Point Hitch upright to upright on front of main frame. Use  $7/8 \times 2$ " bolt and lock washer on front support. On 3-Point upright end put brace against side of upright and use  $1-5/8$ " pipe spacer,  $7/8 \times 4-1/2$ " bolt with lock washer (Photo 12A).



# 12A



# 13

# 13A

13. SADDLE ASSEMBLY. LEAVE BOLTS LOOSE UNTIL FURTHER ADVISED!  
Set rear saddle bracket on main frame. Fasten with two  $3/8 \times 1-1/2 \times 4$ " plates, four  $1/2 \times 5-1/2$ " bolts and lock nuts.  
(Photo 13A)







# 14

# 14A

14. First assemble saddle frames by bolting arches with handles to saddle main frame end without booster block and arches without handles to end with booster block (Photo 14A). Use sixteen  $3/8 \times 1-1/4$ " bolts and lock nuts.



# 15



15. Bolt one stand spacer to welded booster bracket on each saddle base using eight  $1/2 \times 1-1/2$ " bolts and lock nuts (Tighten these bolts).



16. Set saddle cross brace on top of main frame about 1" back of 3-Point support bracket. Hold in place using one 3/8 x 5 x 6" top plate with uprights and one 3/8 x 5 x 6" plate for bottom. Secure with for 1/2 x 7-1/2" bolts and lock nuts. Do not tighten. **# 16**



**# 17**

17. Set saddles onto main frame. In back use four 5/8 x 1-1/2 bolts and lock washers. On front use two 3/8 x 5 x 6" plates and eight 1/2 x 3-1/2" bolts and lock nuts (Photo 17A). **# 17A**



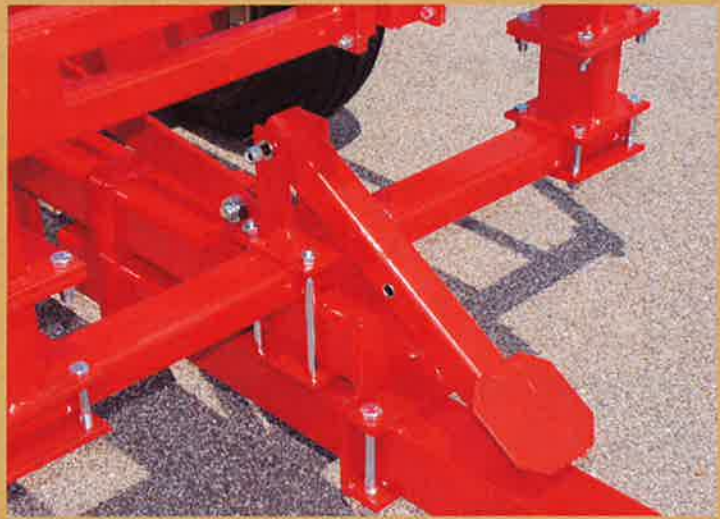
**# 18**

18. Put inside saddle stringers on center posts. Bolt both stringers together using two 3/8 x 4-1/2" bolts and lock nuts. (Do not tighten)



## # 19

19. Put two #43 bushings into step uprights. Slip step petal between uprights and use 1/2 x 4-1/2" bolt and lock nut. Insert 2" pipe spacer into center hole of step petal.



## # 20

20. Bolt step brackets to front of tank saddle by inserting two #43 bushings in insides of each step and use four 1/2 x 1-1/2" bolts and lock nuts.

## # 21

21. Insert four #43 bushings into outside holes of step petal arms. Bolt top of step arm to step using two 1/2 x 1-1/2" bolts and lock nuts. Bolt bottom of arms to step petal using 1/2 x 4" bolt and lock nut (Photo 21A).

## # 21A







# 22

22. Insert #43 bushing into 2-1/2 x 6" step lock plate. Bolt plate to right side of right step using 1/2 x 1-1/2" bolt and lock nut. Tighten all step bolts. Raise step when planting so tractor tires do not hit on tight turns. (Photo 22A) shows step locking plate in the up or locked position.

# 22A



23. Tighten main saddle bolts. Start first with the back 4 bolts to pull saddle up tight to 3-Point Hitch. Tighten the lower four bolts on the main frame. Then tighten the 12 front bolts on the cross piece. Wait with the tank support brackets until the tanks are in the saddles.



# 24

24. Set the tanks into saddles. They will fit tight and you may want to use a rubber mallet. Install outside saddle stringers using four 3/8 x 2-1/2" bolts and lock nuts (Photo 24A). Tighten all remaining saddle bolts.



# 24A



# 25

25. Turn four bushings and elbows into bottom of tanks.

# 26

26. Trailer is complete. Now add the 4x7 A-Frame to the toolbar (See instructions in A-Frame Box). Mount hydraulic cylinder under main frame. Fasten hoses to tanks and mount units to toolbar.





# **803 4HF PACKING LIST**

- 1 - Tongue**
- 1 - Main Frame**
- 1 - Rockshaft**
- 1 - 3-Point Hitch brace**
- 1 - Saddle assembly bracket**
- 2 - Saddle frames with handles**
- 2 - Saddle frames without handles**
- 2 - Saddle frames**
- 1 - Saddle cross brace**
- 4 - Saddle stringers**
- 2 - Steps**



## Fasteners

32	3/8 x 1
4	3/8 x 2-1/2
2	3/8 x 4-1/2
15	1/2 x 1-1/2
10	1/2 x 4
4	1/2 x 5-1/2
4	1/2 x 7-1/2
4	5/8 x 1-1/2
2	5/8 x 6-1/2
4	3/4 x 6
5	7/8 x 2
1	7/8 x 4
1	7/8 x 4-1/2
4	7/8 x 10
38	3/8" Nylock Nut
33	1/2" Nylock Nut
6	5/8" Nut
4	3/4" Nut
10	7/8" Nut
1	7/8" Nylock Nut
12	Wheel Stud Bolt
6	5/8" Lock Washer
4	3/4" Lock Washer
10	7/8" Lock Washer
12	#43 Bushing

# **803-4HF CARTON PACKING LIST**

## Plates and Accessories

2	3/8 x 1-1/2 x 4
1	1/2 x 2 x 6
2	1/2 x 2-1/2 x 6
4	5/8 x 2-1/2 x 7
1	3/8 x 2-1/2 x 6 notched end
3	3/8 x 5 x 6
2	3/8 x 1-1/2 x 14-1/2 straps bent on both ends
1	3/4 OD x 2 Pipe Spacer
1	1-3/8 OD x 1-3/4 Pipe Spacer
1	Hitch End
1	Jack and Snap Ring
1	Top Link 3rd Arm
2	Tank Riser
1	Step Plate
1	Step Arm
4	1-1/4" Bushing for tank
4	Elbows
8	Hose Clamps
2	1" Pins
2	7/16" Clip Pin