

Model 5000W Parts List

43	1/2" Shoulder bushing	5141	Twin cup mounting complete
373	Unit chin tightener and kicker spring	5149	Pin for mounting chain guard
376S	Tension spring	5156	Shoe adjustment bolt assembly
434	7/8" Oilite bushing	5189	Hose barb
529CO	5000W wheel scraper blade	5190	Coupler
533CO	Wheel scraper assembly	5191	90 degree elbow
610 89	Air valve float ball	5193	Thumb screw
611	Nylon water valve seat	5195	Large inside dial
612L	Ball valve with brass pin (after 2000)	5196	Small outside dial
639AHDD	Adjustable packing wheel hub	5197	Water dial guard
926	Sealed bearing	5198R	Rollers and bolt for trip arm
1000VS	Water valve shut off	5199	Trip channel on pump rod
4610	10 tooth, 5/8" bore sprocket	5501	Side plate, guard side
5000K	Kicker deflector	5502	Side plate, water side
5000WWS	Plastic shield only	5503	Front plate
5001	Water valve cap	5504	Back plate
5006	Water valve "T"	5505	Top plate with gear box mounting
5009L	Water pump rod (after 2000)	5506	Inspection plate
5019	Mounting Bracket	5507	Wheel yolk
5020	1" Flange block bearing	5508	Long nut for wheel adjustment
5026	Adjustable shoe	5509	Crank assembly
5026DDS	Double disc shoe	5510	Front shoe mount bracket
5026DDSP	Poly sided double disc shoe	5512	Footrest bracket
5026P	Poly sided adjustable shoe	5513	Footrest mounting plate
5026S	Shoe skag	5514	Adjustable footrest bracket
5035	Hex locking plate	5515	Footrest
5036	Center post for cups	5516	Lower scissor hitch arm
5037	Cup mounting bracket	5517	Upper scissor hitch arm
5038	Plastic deflector cap for cups	5518	Seat post
5039	Cup tube	5519	Guard support bracket
5040	90 Tooth spur gear	5520	5000W axle, right
5041	2 Shaft gear box	5521	5000W axle, left
5042	Cup trip bracket	5522	3-1/2" Wide packer wheel
5044	15 Tooth spur gear	5523	3" Wide packer wheel
5045	5/8" Flange block bearing	5524	L-bracket for wheel scrapers
5047	Aluminum kicker	5525	Wheel scraper small mounting bracket
5054	Lift chain on scissor hitch	5526	Kicker arm mounting plate
5056	Kicker cam	5527	Kicker arm
5063	Front chain guard	5528	Spur gear guard
5065	Swing arm for seat	5529	Water valve housing
5067	Shoe cleaner	5530	Water valve roller trip assembly
5070	Windshield	5531	Drop tube
5072	Leveling arm	5532	Water valve for 5000W
5073	Front toolbar securing plate	5533	Carrousel base
5074	Stainless steel shaft (per foot)	5534	Unit drive chain
5095	Cup door spring	FC167	5/16x2" Carriage bolt
5096	Door hinge pin	FH211	3/8x1-1/4" Hex head bolt
5097	Door for cup	FH333	1/2x1-1/4" Hex head bolt
5098	1" "Love-joy" coupler	FH521	3/4x3-1/2" Hex head bolt
5099	Pipe timing lock	FMB400	5/8" Machinery bushing
5111	1" Transtorque bushing	FSC200	3/8" Set collar
5112	35 Tooth sprocket	FSC500	7/8" Set collar
5124	1-1/2" Chain tightener roller	FW200	3/8" U.S.S. flat washer
5140	Complete top	FW450	3/4" U.S.S flat washer

Mechanical Transplanter Company, LLC

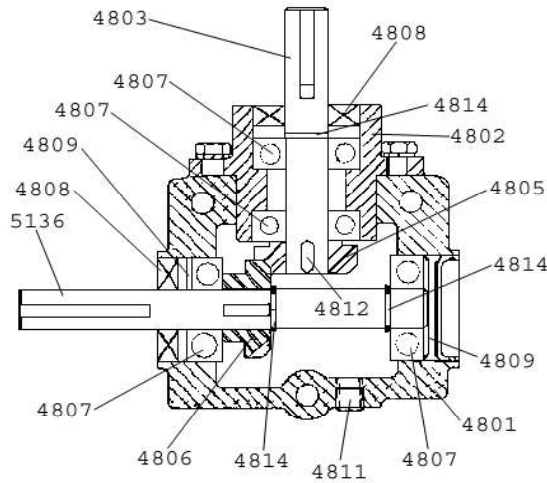
1150 Central Avenue * Holland, Michigan 49423

Phone: (616) 396-8738 * Fax: (616) 396-3619

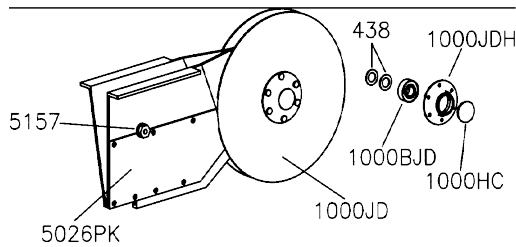
www.mechanicaltransplanter.com * mtc@mechanicaltransplanter.com

Gearbox Parts

4801	Gear box main housing
4802	Gear box pinion housing
4803	Gear box pinion shaft
4805	Gear box pinion shaft gear
4806	Gear box gear shaft gear
4807	Gear box bearing
4808	Gear box seal
4809	Gear box large snap ring
4811	Gear box pipe plug
4812	Gear box key
4814	Gear box small snap ring
5136	Gear box input shaft

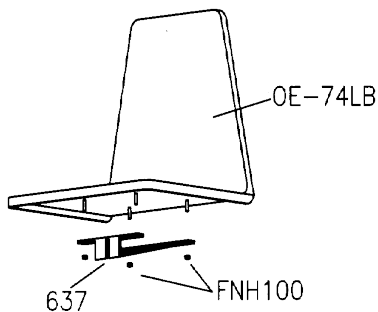


5026DDS & 5026DDSP Double Disk/Poly Double Disk Shoe



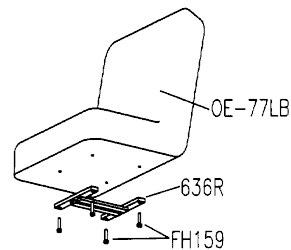
438	3/4" machinery bushing
1000BJD	Double disc bearing
1000HC	Double disc hub cap
1000JD	Disc with hub
1000JDH	Hub with fasteners
5026PK	Poly kit
5157	Shoe adjustment bolt assembly

OE-74 Fiberglass Seat



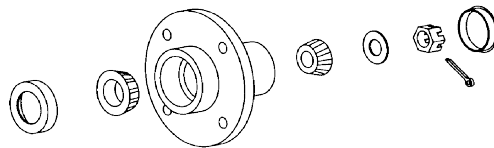
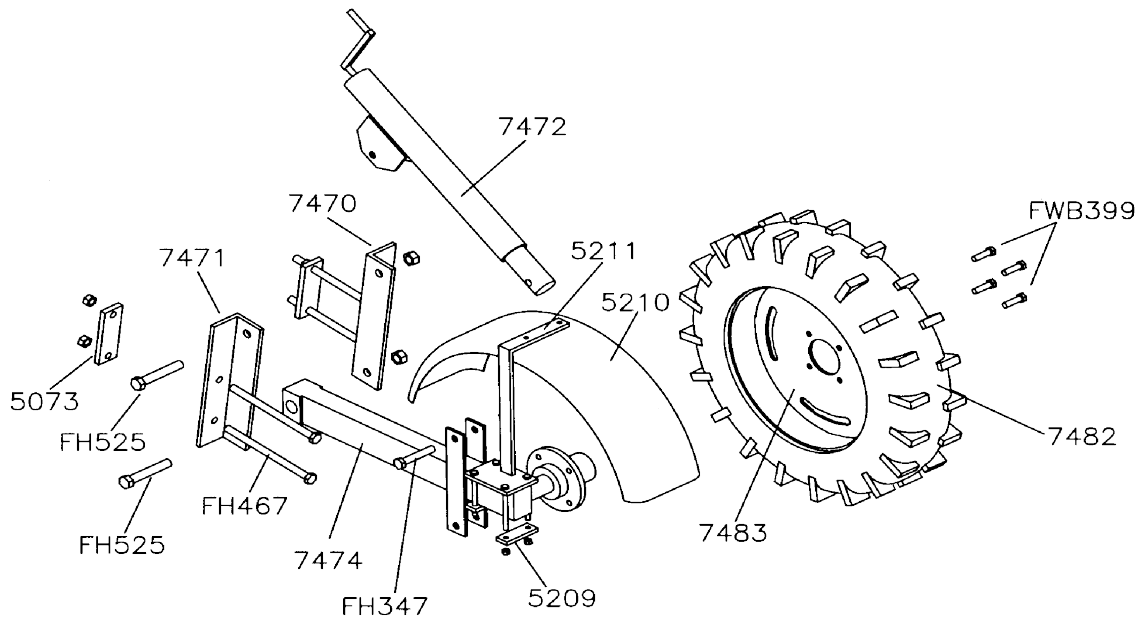
Cushion seat bracket (red)
 Fiberglass seat bracket
 Fiberglass seat less bracket
 Cushion seat less bracket
 5/16x1" hex head cap screw
 1/4" hex nut

OE-77 Cushion Seat

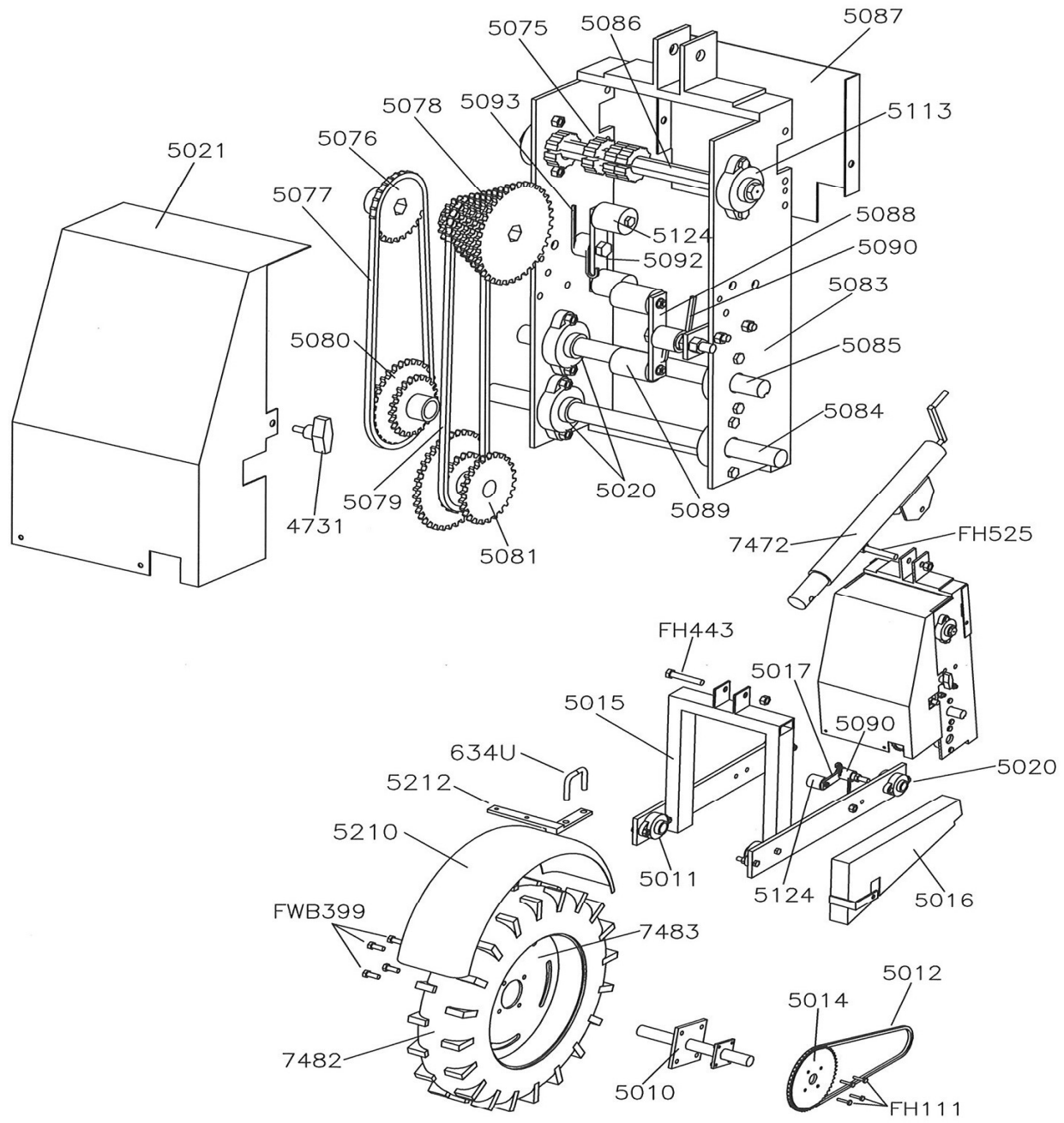


OE 90 Gauge Wheel Drive Parts

- | | | | |
|------|--------------------------------|--------|---------------------------------------|
| 4731 | Bolt with handle for guard | 5087 | Small drive guard |
| 5010 | Drive wheel hub | 5088 | Chain tightener bracket |
| 5011 | 1-1/4" Flange block bearing | 5089 | 2" Roller for chain tightener |
| 5012 | Drive wheel chain | 5090 | 7 Coil chain tightener spring |
| 5014 | 50 Tooth drive sprocket | 5092 | Chain tightener bracket |
| 5015 | Main drive wheel frame | 5093 | 5 Coil chain tightener spring |
| 5016 | Rear drive sprocketchain guard | 5113 | 7/8" Hex flange block bearing |
| 5017 | Chain tightener arm | 5124 | Chain tightener roller (1-1/2" long) |
| 5020 | 1" Flange block bearing | 5210 | Fender less mounting bracket |
| 5021 | Large drive guard | 5211 | Dummy guage wheel fender bracket |
| 5075 | Rubber spacer | 5212 | Drive wheel fender mounting bracket |
| 5076 | Single hex bore sprocket | 5213 | Fender assembly for dummy guage wheel |
| 5077 | Double sprocket cluster chain | 5214 | Fender assembly for drive wheel |
| 5078 | Six sprocket cluster | 7472 | Crank jack |
| 5079 | Six sprocket cluster chain | 7482 | 5.90x15 Traction tire |
| 5080 | Double sprocket cluster | 7483 | Wheel rim only |
| 5081 | Triple sprocket cluster | FH111 | 1/4x1-1/4 Hex head bolt |
| 5083 | Drive frame | FH525 | 3/4x4" Hex head bolt |
| 5084 | Lower drive shaft | FH443 | 5/8x3-1/2" Hex head bolt |
| 5085 | Middle drive shaft | FWB399 | 9/16x1-3/4" Wheel stud bolt |
| 5086 | Upper hex drive shaft | | |

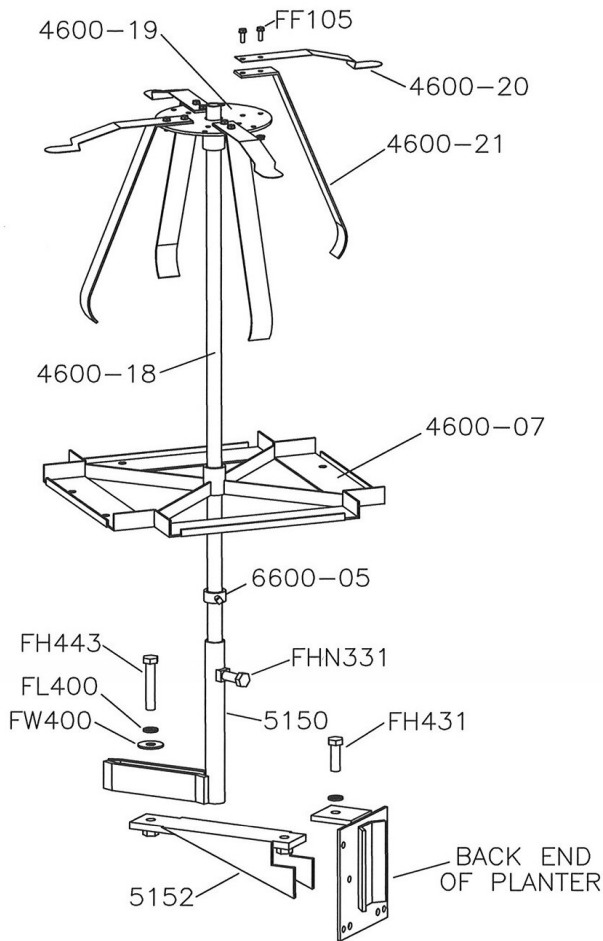


COMPLETE HUB ASSEMBLY — PART #7475
BEARINGS AND SEALS — PART #7476

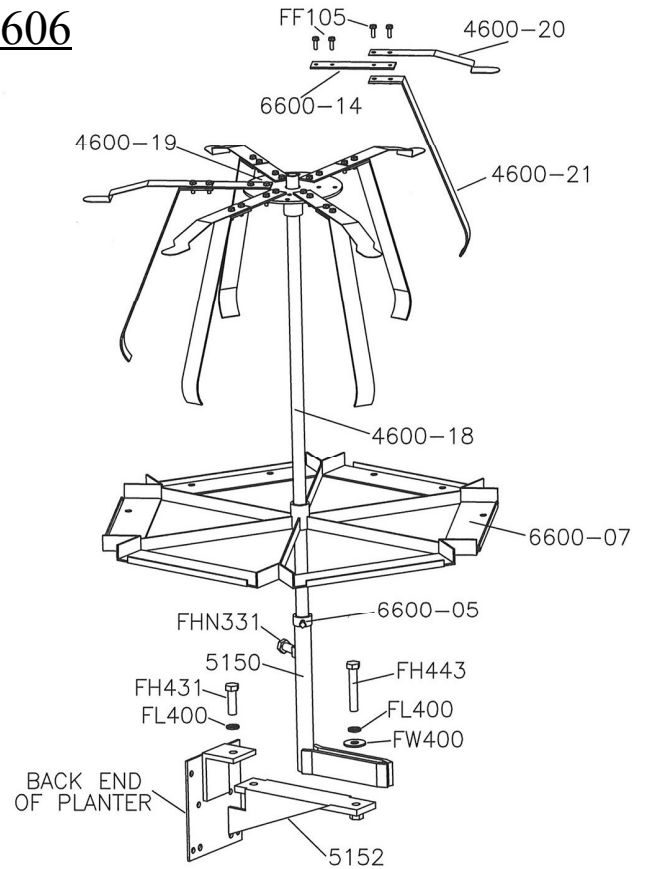


Carrousel Tray Holders

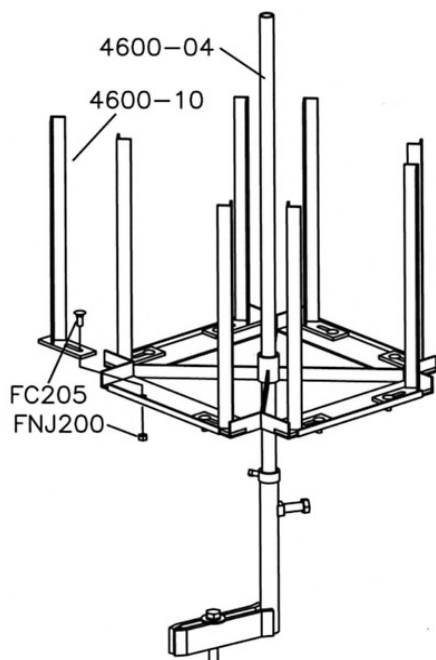
5600



5606



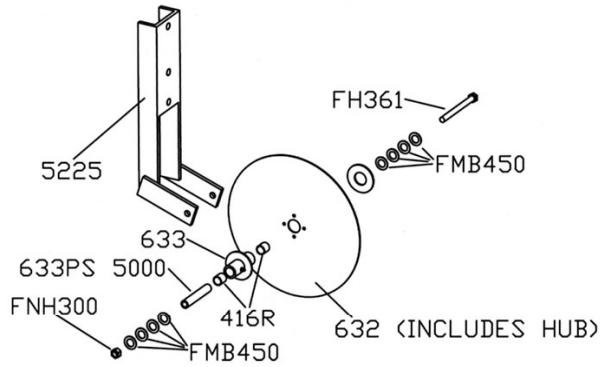
5601



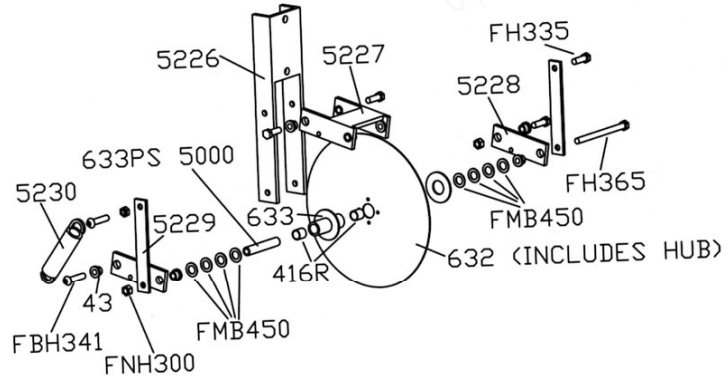
- 4600-04 Plastic Tray Pipe
- 4600-07 4 Place Bottom Tray
- 4600-10 Plastic Tray Holder Arm
- 4600-18 Carrousel Pipe
- 4600-19 Top Disc
- 4600-20 Top Spring Plate
- 4600-21 Back Spring Plate
- 5150 Carrousel Arm
- 5152 Carrousel Base
- 6600-05 Carrousel Collar
- 6600-07 6 Place Bottom Tray
- FC205 3/8x3/4" Carriage Bolt
- FF105 1/4x3/4" Flange Bolt
- FH431 5/8x2" Hex Head Bolt
- FH443 5/8x3-1/2" Hex Head Bolt
- FHN331 1/2x1" Nylon Hex Head Bolt
- FL400 5/8" Lock Washer
- FNJ200 3/8" Jam Nut
- FW400 5/8" Flat Washer

Coulter Options

OE 65 5000



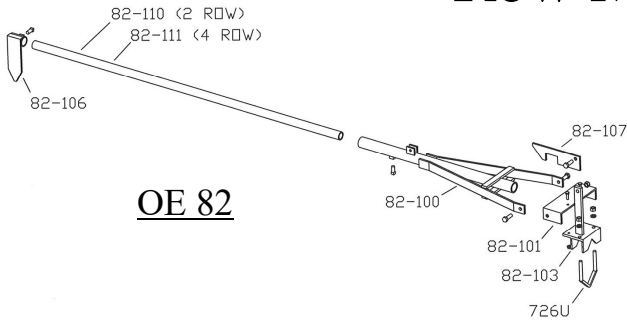
OE 65 5000SP



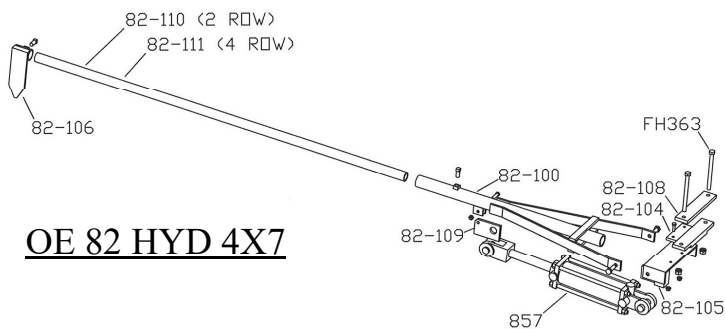
- 43 1/2" Bushing with Shoulder
- 416R 3/4" Bushing for Coulters
- 632 14" Coulter with Hub
- 633 Coulter Hub (Includes 416R's)
- 633PS 5000 Pipe Spacer
- 5225 Bracket for Rigid Coulter Assm.
- 5226 Bracket for Spring Loaded Coulter Assm.
- 5227 Top Scissor Arm

- 5228 Bottom Scissor Arm (ea)
- 5229 Back Leg for Scissor
- 5230 Coulter Spring
- FBH341 1/2x2-1/4" Button Head Bolt
- FH335 1/2x1-1/2" Hex Head Bolt
- FH361 1/2x5-1/2" Hex Head Bolt
- FH365 1/2x6-1/2" Hex Head Bolt
- FMB450 3/4" Machinery Bushing
- FNH300 1/2" Hex Nut

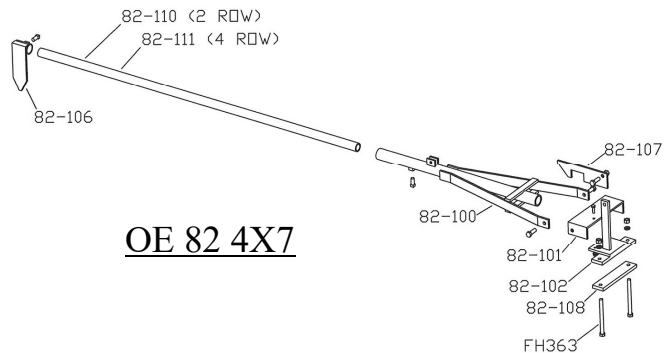
Row Marker Options



OE 82



OE 82 HYD 4X7

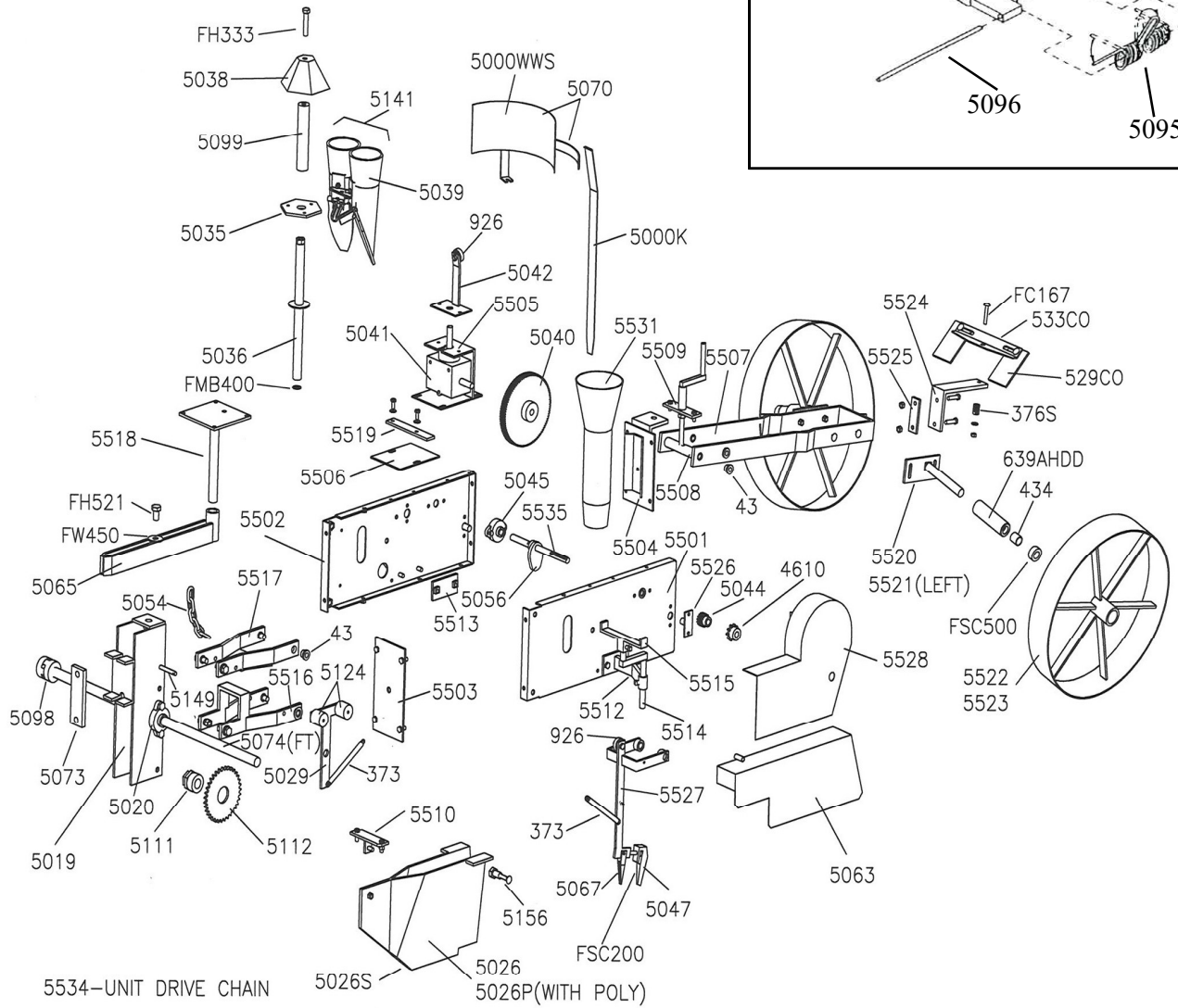
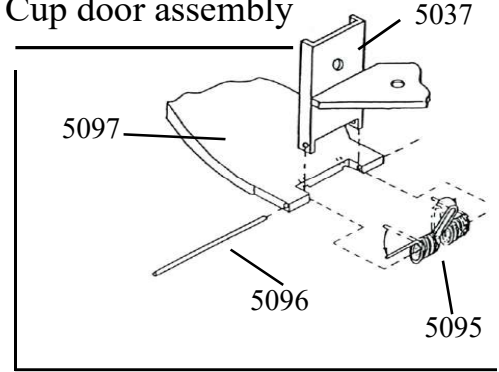


OE 82 4X7

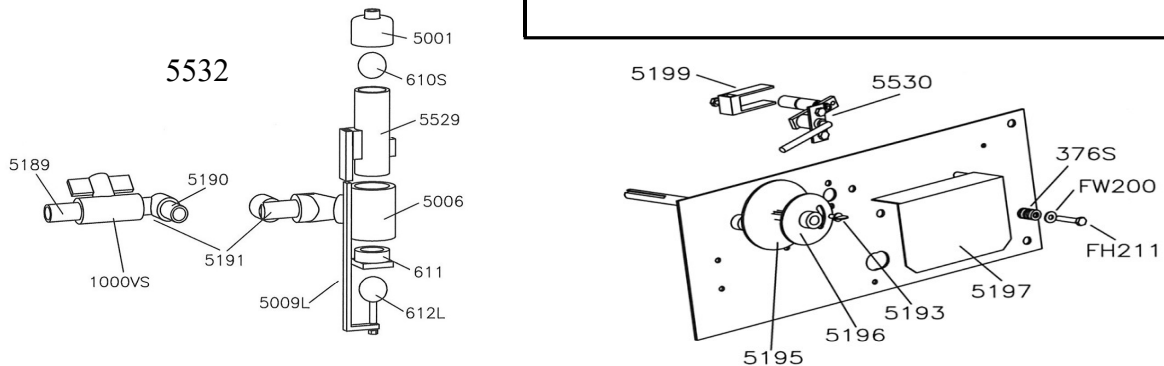
- 82-100 A-Frame
- 82-101 Swivel Bracket
- 82-102 Latch Bracket for 4x7 Bar
- 82-103 Latch Bracket for Diamond Bar
- 82-104 Toolbar Mounting Bracket
- 82-105 Swivel with Cylinder Mount
- 82-106 Marker Point
- 82-107 Latch

- 82-108 1/2 x 2 x 9-1/8 Securing Plate
- 82-109 Cylinder Swivel
- 82-110 2-Row Pipe
- 82-111 4-Row Pipe
- 726U 1/2" U-Bolt for Toolbar Clamps
- 857 3 x 8" Hydraulic Cylinder
- FH363 1/2 x 6" Hex Head Bolt

Cup door assembly



Watervalue and trip parts



Safety Precautions

1. Make sure tractor is stopped and in neutral with the transplanter lowered to the ground before getting on and off the unit.
2. No operator is allowed to be on the unit as it is raised and lowered.
3. No operator is allowed on the transplanter as it is transported to or from the field.
4. All operators must be seated before movement begins and remain seated until the transplanter is completely stopped.
5. Never leave the transplanter in the raised position.
6. Keep all shields and guards in place when operating the transplanter.
7. Never attempt repairs or maintenance while the transplanter is in motion.
8. Never put the tractor in reverse while the transplanter is on the ground.
9. Follow all safety instructions supplied by the tractor manufacturer to which the transplanter is mounted.

MACHINE IMPROVEMENTS

MECHANICAL TRANSPLANTER CO. IS ALWAYS STRIVING TO MAKE IMPROVEMENTS ON THEIR LINE OF EQUIPMENT. MECHANICAL TRANSPLANTER CO. RESERVES THE RIGHT TO MAKE IMPROVEMENTS AND CHANGES AT ANY TIME WITHOUT INCURRING OBLIGATIONS TO MAKE SUCH CHANGES OR ADDITIONS TO EQUIPMENT PREVIOUSLY SOLD.

Limited Warranty

Mechanical Transplanter Company warrants each item of new equipment manufactured by Mechanical to be free from defects in material and workmanship under normal use and service.

The obligation of Mechanical Transplanter Company under this LIMITED WARRANTY is limited to repairing or replacing as Mechanical may elect, and any parts that prove, in Mechanical's judgment, to be defective in material and workmanship within the first season's use or 45 consecutive days after initially placing equipment in operation, whichever occurs first. Any outside work or alterations without Mechanical's written approval will render the LIMITED WARRANTY void.

Mechanical's obligation specifically excludes any liability for consequential damages, such as loss of profits, delays, expenses, damage to goods or property used in connection with or processed in or by the product sold, or damage to the product sold from whatsoever cause, whether or not such loss is due to negligence of selling dealer of Mechanical Transplanter Company.

This limited warranty shall not apply to any item or machine which shall have been operated in a manner not recommended by the Company nor which shall have been repaired, altered, misused, damaged in an accident, neglected, tampered with or used in any way which in the Company's opinion adversely affects its performance and results.

No person is authorized to give any other warranties or to assume any other liability on behalf of Mechanical Transplanter Company, unless made in writing by Mechanical.

This limited warranty covers repair or replacement of Mechanical Transplanter Co. equipment only and does not cover crop loss, downtime, labor, damage to other equipment, etc.

This limited warranty does not apply to exterior finishes, tires, chain links, bearings, or any other items sold by Mechanical Transplanter Co., but warranted by the original manufacturer except to the extent of their individual manufacturer's warranty.

THIS LIMITED WARRANTY IS IN LIEU OF ALL OTHER WARRANTIES, EXPRESSED OR IMPLIED. WARRANTIES OF MERCHANTABILITY AND FITNESS FOR PARTICULAR PURPOSE ARE EXCLUDED, AS ARE ALL OTHER REPRESENTATIONS TO THE USER-PURCHASER, AND ALL OTHER OBLIGATIONS OR LIABILITIES, INCLUDING LIABILITY FOR INCIDENTAL AND CONSEQUENTIAL DAMAGES, ON THE PART OF MECHANICAL OR THE SELLER.

Mechanical Transplanter Company * 1150 Central Avenue * Holland, MI 49423
Phone: 616-396-8738 or Fax: 616-396-3619