

# MODEL 33-6000

## Assembly Manual

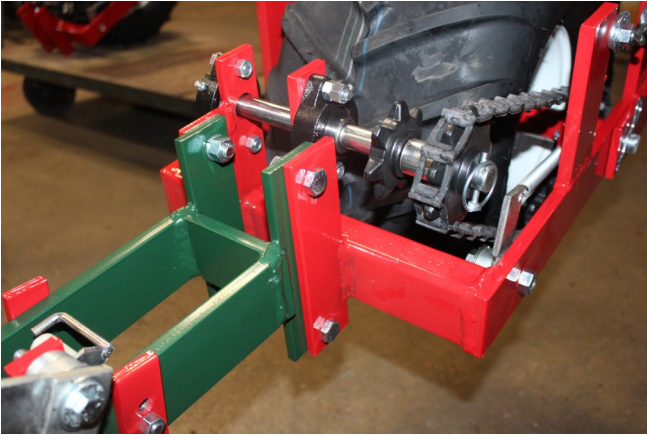


### **Mechanical Transplanter Co.**

1150 Central Ave - Holland, MI 49423 \* Phone 616-396-8738 \* Fax 616-396-3619

Website: [www.mechanicaltransplanter.com](http://www.mechanicaltransplanter.com)

E-mail: [mtcparts@egl.net](mailto:mtcparts@egl.net)



1. Install the drive system onto the unit by using four 1/2 x 1 1/2 hex head bolts , lock washers and nuts.



2. Remove the clip pin and sprocket package from drive



3. Install the seat bracket onto unit by using one 727 U-Bolt, flat washers, lock washers and hex nuts.



4. Install the inside chain guard by removing the outside 3/8 hex nut on the drive.



5. Re-install hex nut onto drive. Secure the other end of the guard by using one 3/8 x 1 hex head bolt and nut, inserting it through the frame of the unit and guard.

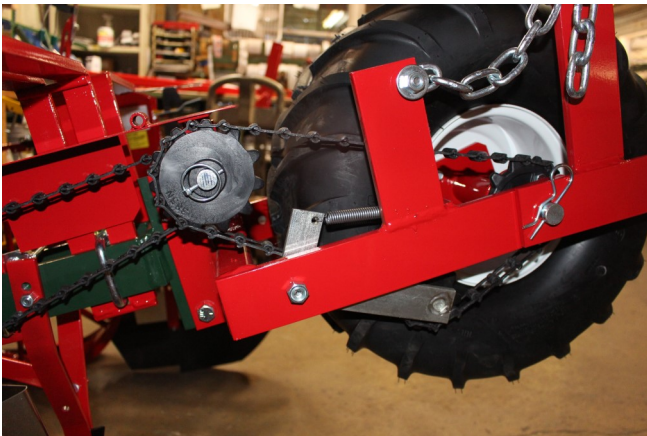


6. Refer to spacing chart on guide for desired plant spacing. IE - For 18" plant spacing you would use the following sprockets:

- 11 tooth (385) on the outside jackshaft of the drive.
- 7 tooth (381) on the inside of the jackshaft.
- 7 tooth (381) on the unit lower conveyor sprocket.



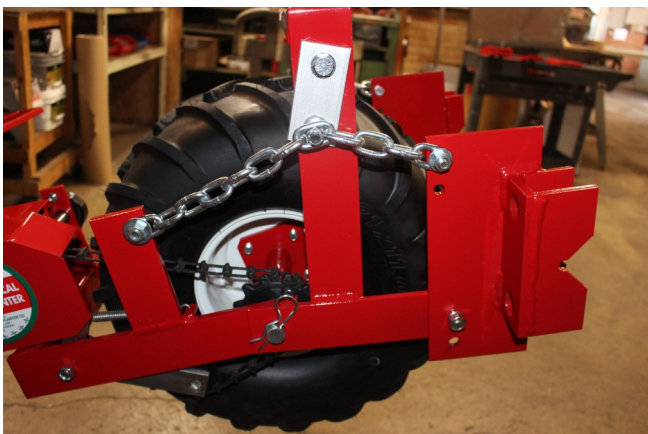
7A. Install the unit drive chain as shown.



7B. Note for this spacing, you will need to add the extra links attached to the drive for it to fit properly.



8. Install the outside chain guard and secure with two #17 clip pins.



9. Install the drive clamps by using two 1/2 x 1 1/2 hex head bolts, two #43 bushings, lock washers and hex nuts.

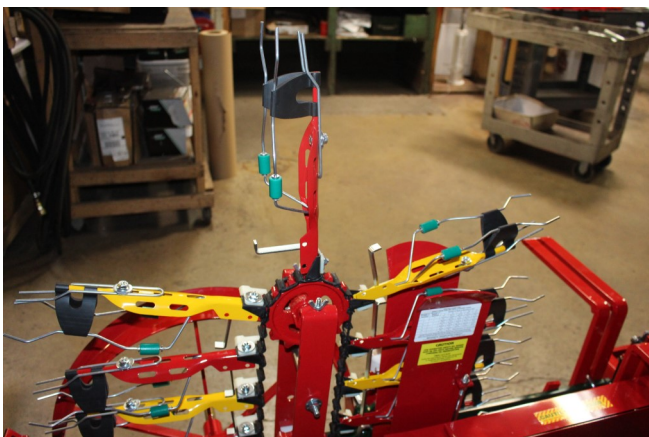
Note- Use the top holes of the clamp. Attach the lift chains by using two 7/16 x 1 1/4 hex head bolts, two flat washers and hex nuts.



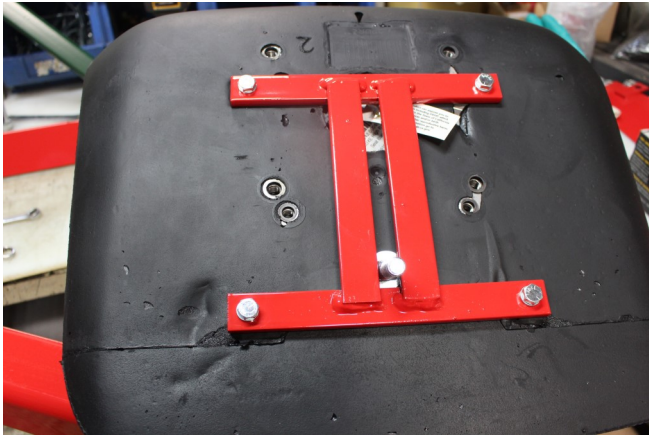
10. If using a single row hitch, secure the hitch with two 7/8 U-Bend, 740 U-Bolts, lock washers and nuts. Center the hitch by using the drive wheel as a reference point and tighten.



11. Install the hitch pins and pipe stands onto the hitch.



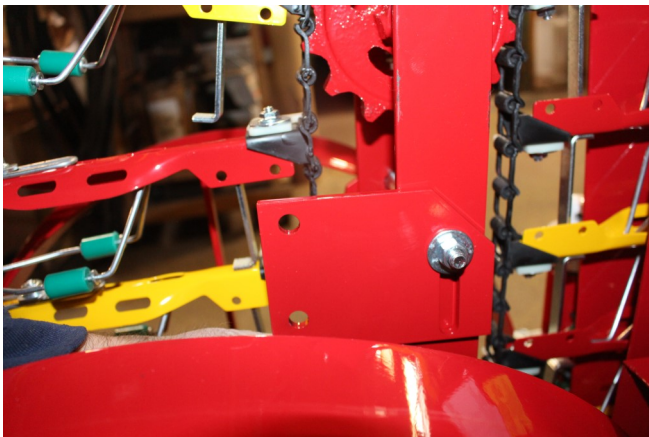
12. Install the extra pocket if needed by using a 7/16 wrench.



13. Install the seats.

If you are using cushion (OE77), secure the red bracket to the bottom of the seat by using four 5/16 x 1" hex head bolts and lock washers. Insert the 1/2 x 1 1/2 carriage bolt into the bracket first.

If you are using fiberglass (OE74), use four 7/16 serrated flange nuts and ONE 1 1/2 carriage bolt, flat washer, lock washer and nut.



14. Installing the plant stands: Install the flat plate on the upright as shown; leave loose.



15. Remove the outer cotter pin on the packing wheel axle.



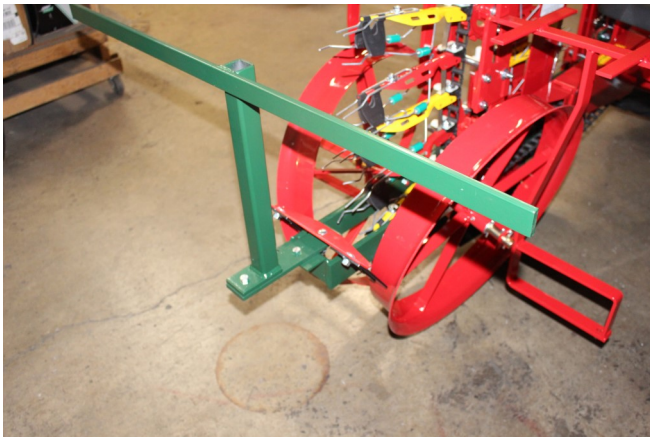
16. Install plant stand on the unit by sliding the lower plate onto the axle. Reinstall cotter pin and bend over longer leg to secure.



17. Install upper part of plant stand onto plate. Attach with two 3/8 x 1 hex head bolts and serrated flange nuts. Leave loose until you have both sides on, then tighten.



18. Install the adjustable plant box tub by using one 3/8 x 1 hex head bolt and serrated flange nut.



19. Install the rear shelving "T" by using one 3/8 x 1 1/4 hex head bolt, lock washer and nut.



20. Install the trays



## For Multi Row Application



1. Layout the tool bar and find the center of the bar. Mark the row centers and drops for the 3-point hitch. Note- refer to the sing row set up for the unit.



2. For this application we are turning the clamps to the inside to be able to fit on the toolbar. Align the mark made on the tool bar with the center of the drive wheel and tighten.



3. Install the parking stand brackets and stands by using two 726 U-bolts, lock washers and hex nuts. Leave enough room for the second unit you can slide next to it once you have the drive installed. Now your unit will stand on its own



4. Install second drive onto tool bar. See set up for single row instructions.



5. Assemble the A-frame uprights by using one 7/8 x 5 hex head bolt, spacer, lock washer and hex nut.



6. Install on toolbar by using two 7/8 U-Bolts, lock washers, and nuts. Center on toolbar and tighten.



7. Install hitch pins into the A-frame drops using lower holes. The pins can be installed facing in or out of the bracket.



8. Install lower A-Frame drops on the toolbar, centering the hitch pin on the mark you made on the toolbar.



Completed two row.

Shown below with optional drip attachment.



## Safety Precautions

1. Make sure tractor is stopped and in neutral with the transplanter lowered to the ground before getting on /off the unit.
2. No operator is allowed to be on the unit as it is raised and lowered.
3. No operator is allowed on the transplanter as it is transported to or from the field.
4. All operators must be seated before movement begins and remain seated until the transplanter is completely stopped.
5. Never leave the transplanter in the raised position
6. Keep all shields and guards in place when operating the transplanter.
7. Never attempt repairs or maintenance while the transplanter is in motion.
8. Never put the tractor in reverse while the transplanter is on the ground.
9. Follow all safety instructions supplied by the tractor manufacturer to which the transplanter is mounted.

### **MACHINE IMPROVEMENTS**

***MECHANICAL TRANSPLANTER CO. IS ALWAYS STRIVING TO MAKE IMPROVEMENTS ON THEIR LINE OF EQUIPMENT. MECHANICAL TRANSPLANTERCO. RESERVES THE RIGHT TO MAKE IMPORVEMENTS AND CHANGES AT ANY TIME WITHOUT INCURRING OBLIGATIONS TO MAKE SUCH CHANGES OR ADDTIONS TO EQUIPMENT PREVIOUSLY SOLD.***

## Limited Warranty

Mechanical Transplanter Company, LLC warrants each item of new equipment manufactured by Mechanical to be free from defects in material and workmanship under normal use and service.

The obligation of Mechanical Transplanter Company, LLC under this LIMITED WARRENTY is limited to repairing or replacing as Mechanical may elect, any parts that prove, in Mechanical's judgement, to be defective in material and workmanship within the first season's use of 45 consecutive days after initially placing equipment in operation, whichever occurs first. Any outside work or alterations without Mechanical's written approval will render the LIMITED WARRANTY void.

Mechanical's obligation specifically excludes any liability for consequential damages, such as loss of profits, delays, expenses, damage to goods or property used in connection with or processed in or by the product sold, or damage to the product sold from whatsoever cause, whether or not such loss is due to negligence of selling dealer of Mechanical Transplanter Company, LLC.

This limited warranty shall not apply to any item or machine which shall have been operated in a manner not recommended by the Company nor which shall have been repaired, altered, misused, damaged in an accident, neglected, tampered with or used in any way which in the Company's opinion adversely affects its performance and results.

No person is authorized to give any other warranties or to assume any other liability on behalf of Mechanical Transplanter Company, LLC unless made in writing by Mechanical Transplanter Company, LLC.

This limited warranty covers repair or replacement of Mechanical's equipment only and does not cover crop loss, downtime, labor, damage to other equipment, etc.

This limited warranty does not apply to exterior finishes, tires, chain links, bearings, or any other items sold by Mechanical Transplanter Company, LLC, but warranted by the original manufacturer except to the extent of their individual manufacturer's warranty.

THIS LIMITED WARRANTY IS IN LIEU OF ALL OTHER WARRANTIES, EXPRESSED OR IMPLIED. WARRANTIES OF MERCHANT ABILITY AND FITNESS FOR PARTICULAR PURPOSE ARE EXCLUDED, AS ARE ALL OTHER REPRESENTATIONS TO THE USER-PURCHASER, AND ALL OTHER OBLIGATIONS OR LIABILITIES, INCLUDING LIABILTY FOR INCIDENTAL AND CONSEQUENTIAL DAMAGES, ON THE PART OF MECHANICAL OR THE SELLER.