

3-Point Hitch Mounting Instructions

For JH3, JH6 , JH6W

(for Jang Seeder Models JP-3, JP-6, JP6W)



**** For video instructions, please visit www.mechanicaltransplanter.com ****
Link is located on the "Video" tab.



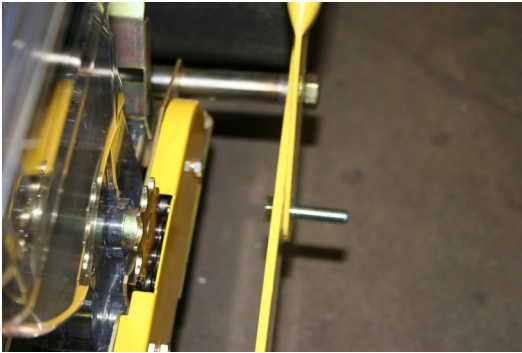
Distributed by: MECHANICAL TRANSPLANTER CO.

1150 Central Ave, Holland, Michigan 49423

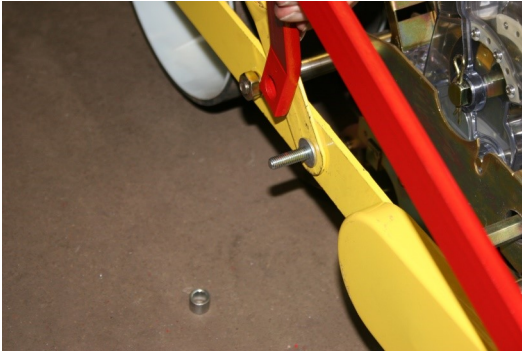
P= (616)-396-8738 F= (616)396-3619

Website www.mechanicaltransplanter.com

E-mail mtc@mechanicaltransplanter.com



1) On the seeder, remove the bolts that attach the handle to the seeder frame. Replace with the 8 x 35mm bolts supplied, threading them from the inside of the frame to the outside as shown, with lock washer between the head of the bolt and the seeder frame.



2) Slide on a washer and tighten on a nut. Repeat on the other side of unit.

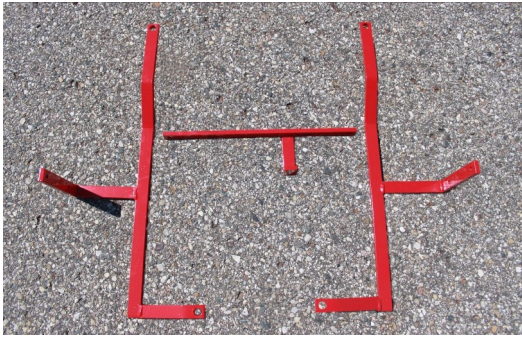


3A

3) Stretch frame over bolts. Insert bushing followed by washer and secure with a nut.



3B



4) Lay outside arms and cross pieces as shown in photo. **
The L-bracket on the cross piece must face backward toward the back of the side arms. The cross piece dimensions are as follows:

- A) 3-row is 16" long
- B) 6-row is 27" long
- C) 6W-row is 40" long.



5) Use four 5/16 x 1" bolts and four lock washers, along with two flat washers for over the two center slots. Thread bolts into the side arm holes and tighten.



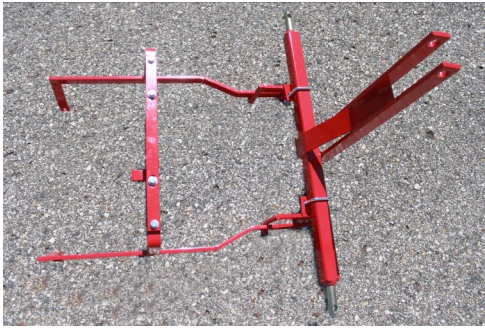
6A

6) Take a 3/8 x 1 -1/2 bolt and slide a 3/8" washer, then a 7/16" long steel bushing onto the bolt. Now place it on the front hole of the side arm so that the bolt is sticking out the inside of the side arm.

Place another 3/8" washer on the bolt. Slide the lift arm over the bolt. The round L-bracket must go under inside of side arm. Now tighten with 3/8" lock nut. Repeat above assembly on the other sidearm.



6B



7A

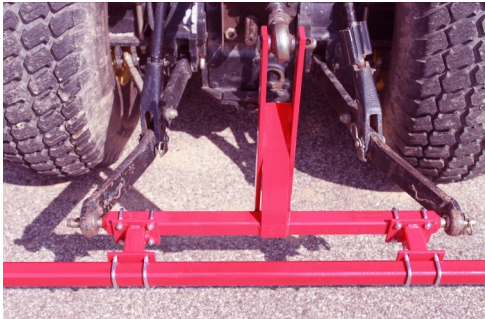
- 7) **For JP3,JP6**
 Center the 3-Point hitch on pads of lifting brackets.
 Use two U-bolts and four flange nuts to secure 3-point on pads.



7B

For the JP6W
 Use 8 U-bolts, 16 flange nuts to fasten set back bracket to the 3-point hitch. * Note: JP6W may be centered or offset on toolbar.

Use four remaining U-bolts to fasten toolbar to set back bracket.
 Center the 3-Point hitch on pads of lifting brackets.
 Use two U-bolts and four flange nuts to secure 3-point on pads.



7B



Multiple seeders may also be assembled on a longer toolbar to plant separate beds at a time

