

SOCCER WATCH

INSTRUCTION MANUAL

FEATURES:-

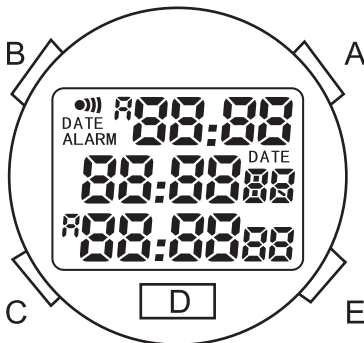


Fig.1

- hour, minute, second, month, date, weekday, and alarm (user option day alarm)
- auto calendar
- soccer timer and stoppage timer to keep track of stoppage time
- presettable timer with range 99minutes
- electro-luminescent backlighted LCD
- 12/24 hour display and month/day reversal by user option

NORMAL DISPLAY

The normal display is as shown in Fig. 1. In this display, the hour, minute and second are shown on the lower row. The month, date and weekday are shown on the middle row and the alarm hour and minute are shown on the top row.

TIME SETTING

When the watch is in the NORMAL display, pressing and holding B for 2 seconds allow us to go into the TIME SETTING mode with the SEC digits flashing. Pressing A will reset the SEC to 00 and start again right away. Press C to select sequentially HOUR, MINUTE, YEAR, MONTH, DATE, and 12/24HR. When the digits are selected, they flash, press A to advance these selected digits. When the setting is completed, press B to complete the TIME SETTING and the display will return to the NORMAL DISPLAY. (When the 12/24HR is set to 12 hr, the time will be displayed in 12 hour system with the middle row displayed in MONTH, DATE and WEEKDAY. When it is set to 24hr, the time will be displayed in 24 hour system with the middle row displayed in DATE, MONTH and WEEKDAY, as shown in Fig.2)

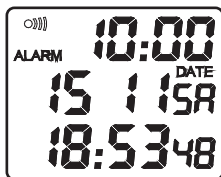


Fig. 2. 24hr system

ALARM

From NORMAL DISPLAY, press C to display the ALARM time, as shown in Fig.3.



Fig.3. Alarm Time Display

Press and hold B for 2 seconds to go into the ALARM SETTING mode with the ALARM HOUR digits flashing. Press A to set the ALARM HOURS. Press C to select sequentially ALARM MINUTES, MONTH and DATE and press A to advance. Press B to complete the settings. When the digits are selected, they flash. When the month or date is not set (remain ----), the alarm will sound everyday at the preset alarm time. When the month or date is set, the alarm will sound only at the preset time at that preset date or month. When the digits have been advanced, the alarm is automatically armed. Pressing A in the ALARM mode will enable or disable the alarm. When the speaker icon at the top left corner is ON, this means that the alarm is enabled.

When the normal time matches the ALARM time, the alarm sounds 30X2 short beeps. When the alarm sounds, we can stop it by pressing any buttons.

SOCCER TIMER

From the ALARM time display, press C to go into the SOCCER TIMER display mode, as shown in Fig. 4.



Fig.4. Soccer Timer Mode

In the SOCCER TIMER mode, the hour, minute and second are displayed on the lower row, the SOCCER TIMER on the middle row and the STOPPAGE TIMER on the upper row. The SOCCER TIMER is preset to 45 minutes (can be set to other values by pressing and holding B for 2 seconds when the timer is not counting down.). Pressing B can start the countdown function. The STOPPAGE TIMER is a count-up timer for keeping track of the stoppage time. Press A to start in stoppage times and press A again to stop when the play resumes. When the STOPPAGE TIMER is counting, the 4 digits are flashing together. At 30 and 15 minutes before the countdown reaches 00:00 00, the timer will give 1 single beep. After crossing 00, the SOCCER TIMER will start counting up. At 30 seconds before the time of the STOPPAGE TIMER, the timer will give 15X 4 short beeps to alert the user that the play time is almost up. When the SOCCER TIMER and the STOPPAGE TIMER matches, the timer will give 10X3 short beeps to tell the user that the playing time is finished. Pressing any button can stop the sound. The SOCCER TIMER keeps running until B is pressed. Press and hold B for 2 seconds will reset the SOCCER TIMER to the previously set countdown time. Press and hold A for 2 seconds will reset the STOPPAGE TIMER. When the SOCCER TIMER is reset, press and hold B for 2 seconds, we can then go into the SET SOCCER TIMER mode and the MINUTE digits will flash, as shown in Fig. 5.



Fig. 5. Set Soccer Timer

Press A to set the timer minutes, maximum range 99 minutes. Press C to go to the SET SEC and press A to set the timer seconds, maximum 59 seconds. When the SOCCER TIMER has been set, press B to complete the SET SOCCER TIMER mode and return to the SOCCER TIMER display mode.

Electro-luminescent backlighted LCD

In this watch, button D and button E carry the same function. When pressing either button D or E, the LCD will light.

CARE OF YOUR STOPWATCH

***WATER-RESISTANCE**

The stopwatch is designed and manufactured to withstand accidental contact with water such as splashes or rain, but it is not designed for swimming or diving.

*TEMPERATURE

Do not leave your stopwatch under direct sunlight or in very high temperatures for a long time, or the display may become black. Do not leave your stopwatch in very low temperature as this may cause a slight time loss or gain and the change of digits becomes slow. In both cases the above conditions will be corrected when the stopwatch returns to normal temperature.

*SHOCKS

Be careful not to drop your stopwatch or hit it against hard surfaces as it may cause mechanical damages.

*STATIC ELECTRICITY

The integrated circuit in your stopwatch can be affected by static electricity. If the static electricity is very strong a permanent damage can occur. Be careful of the screen of the TV set and the wearing of clothing made of synthetic materials in dry weather; in such cases a very strong static electricity can be generated.

*MAGNETISM

Not affected.

*CHEMICALS

Do not expose your stopwatch to solvents such as gasoline and alcohol, spray of cosmetics, cleaners, paints etc as they may cause damage to the stopwatch.

BATTERY CHANGE

When the display becomes dim or turned off, battery replacement is necessary. We recommend you to go to your dealer or a qualified technician. Replace with Lithium battery CR2016 or equivalent.

TROUBLESHOOTING

If for any reason the stopwatch display becomes freeze up, press all 4 buttons at the same time to reset the stopwatch. If the problem still exists, take back the stopwatch to an authorized servicing center for service. **Do not** try to repair it yourself.

CALIFORNIA, USA ONLY

This Perchlorate warning applies only to primary CR(Manganese Dioxide) Lithium coin cells sold or distributed ONLY in California USA.

*Perchlorate Material-special handling may apply. See www.dtsc.ca.gov/hazardouswaste/perchlorate."

BK137.1(D973P)
Printed in China