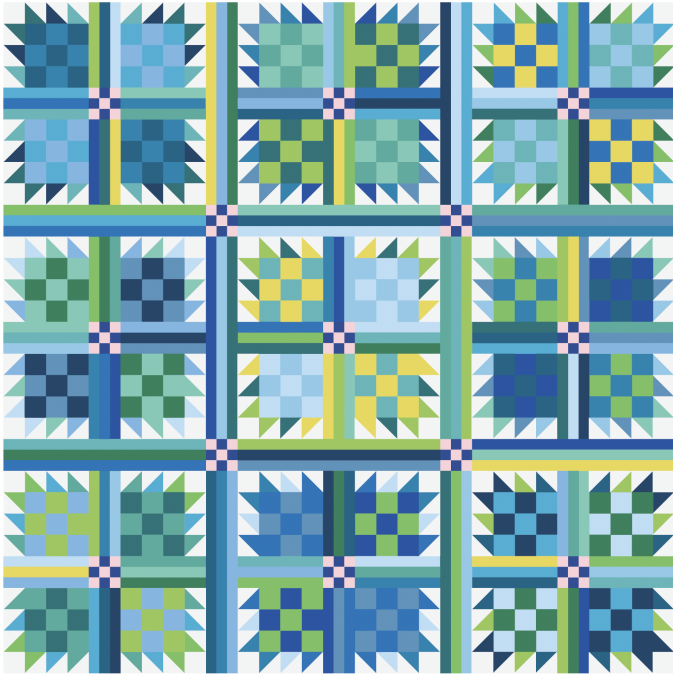




# GOLDIE QUILT

Color Inspiration in Bella Solids

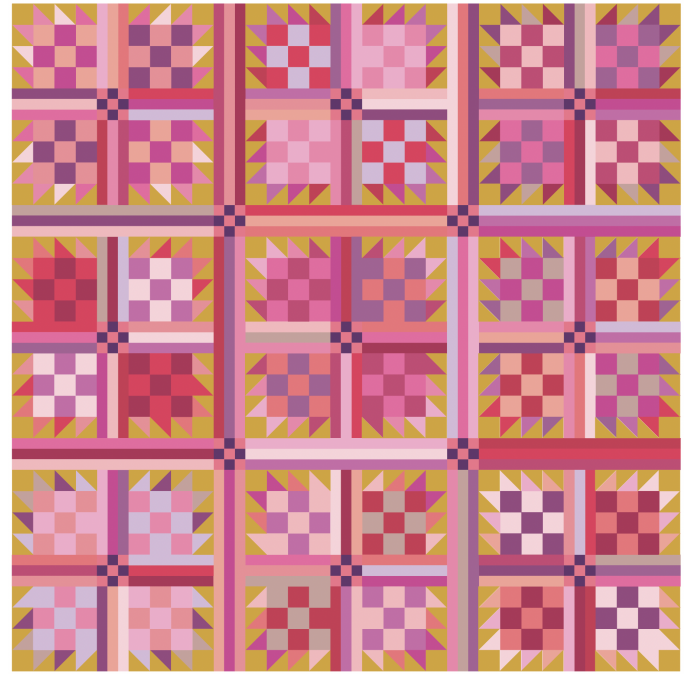
TWENTY FABRICS EACH plus BACKGROUND YARDAGE



Solid Fabric Names:

18 FQs for the blocks: Lagoon, Poolside, Caribbean, Citrine, Sea Glass, Bright Turquoise, Capri, Horizon Blue, Summer Sky, Wasabi, Bright Sky, Surf, Coastal, Emerald, Harbor, Pastel Blue, Kiwi, Azure

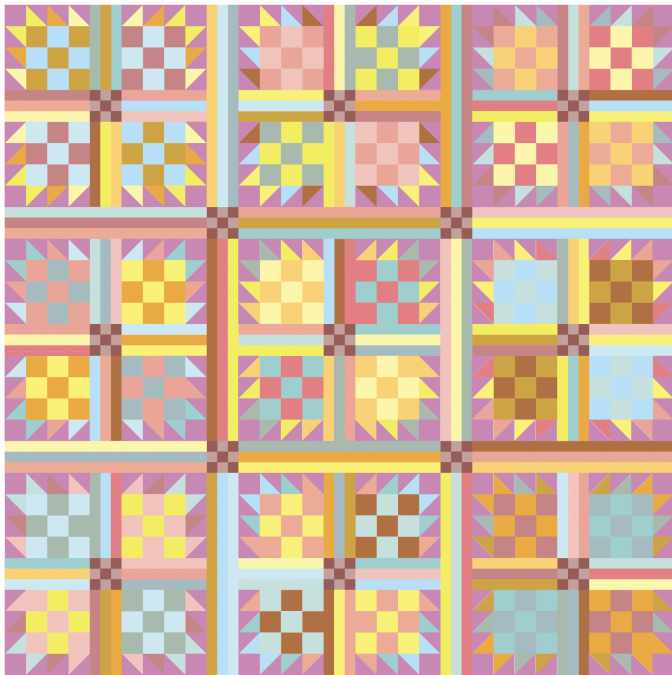
9 Patch Cornerstone F8: Regatta, Sisters Pink // BG fabric: Feather



Solid Fabric Names:

18 FQs for the blocks: Petunia, Bettys Pink, Azalea, 30s Pink, Princess, Fuschia, Magenta, Violet, Lotus, Sisters Pink, Bunny Hill Pink, Lipstick, Cameo, Amelia Pink, Freesia, Cyclamen, Pomegranate, Honeysuckle,

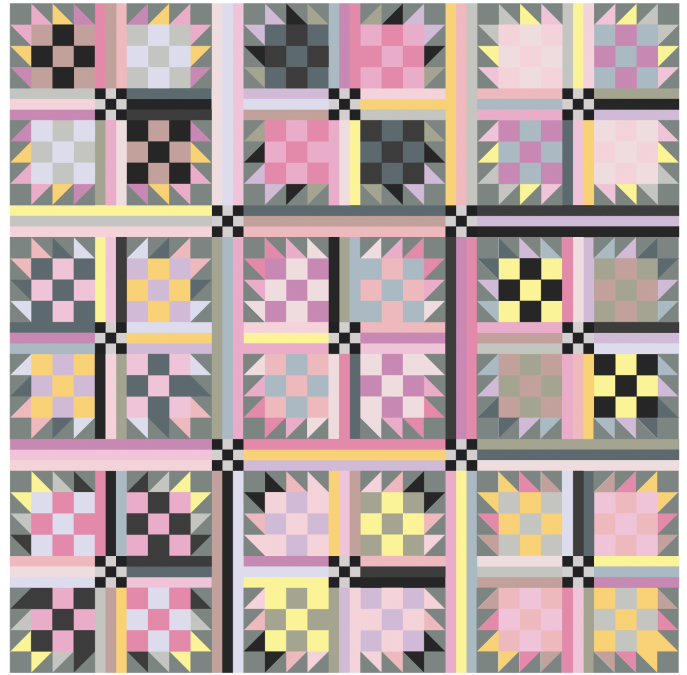
9 Patch Cornerstone F8: Rose, Iris // BG fabric: Saffron



Solid Fabric Names:

18 FQs for the blocks: Saffron, Buttercup, Canary, Lemon, Electric Lemon, Marigold, Bubblegum, Peach Blossom, Carnation, Tea Rose, Ruby Ice, Hometown Sky, Mist, Frost, Tranquil Aqua, Spray, Amber, Rose Water

9 Patch Cornerstone F8: Coral Rose, Bunny Hill Blue // BG fabric: Sweet Pea



Solid Fabric Names:

18 FQs for the blocks: Super Black, Outerspace, Bunny Hill Blue, Ash, Taupe, Moonbeam, Baby Pink, Sisters Pink, Parfait Pink, Amelia Pink, 30s Yellow, Bunny Hill Pink, Princess, Sweet Pea, Charcoal, Freesia, 30s Pink, Buttercup

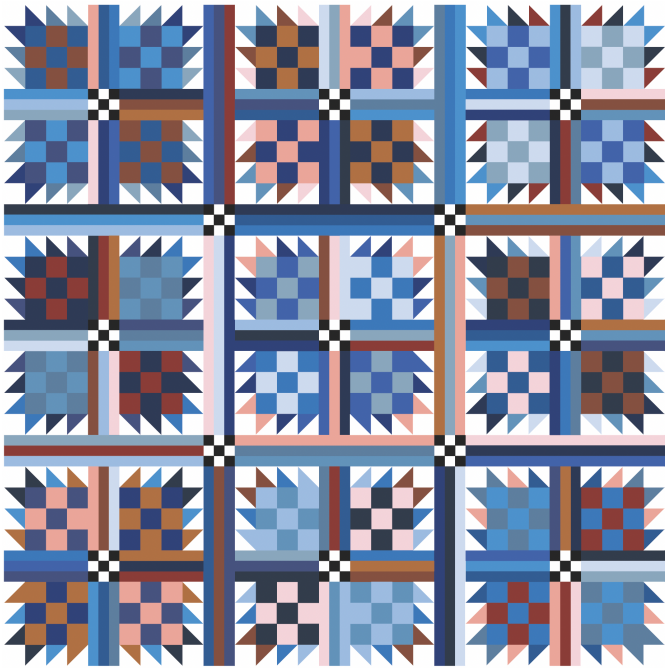
9 Patch Cornerstone F8: Black, Fog // BG fabric: Pewter



# GOLDIE QUILT

Color Inspiration in Bella Solids

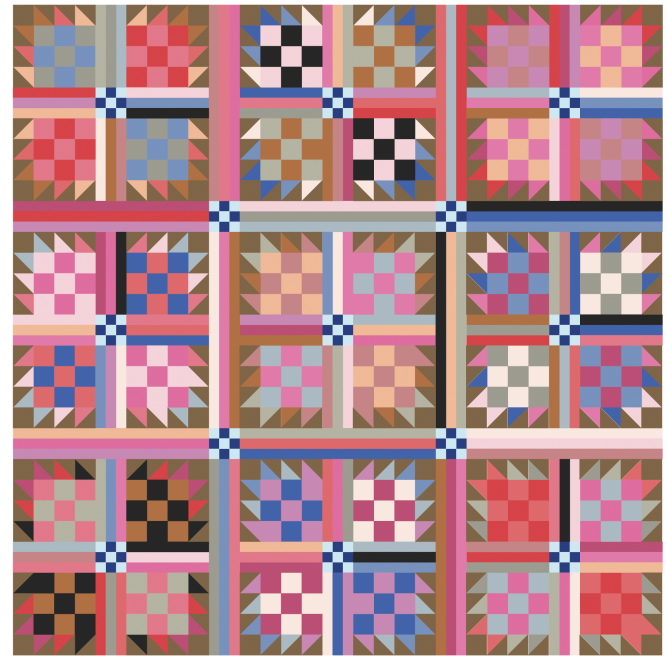
TWENTY FABRICS EACH plus BACKGROUND YARDAGE



Solid Fabric Names:

18 FQs for the blocks: Imperial Blue, Little Boy Blue, Glacier, Coastal, Cornflower, Sapphire, Amelia Blue, Nautical Blue, American Blue, Night Sky, Lt Blue, Waterfall, French Blue, Sisters Pink, Rust, Amber, Carnation, Tomato Soup

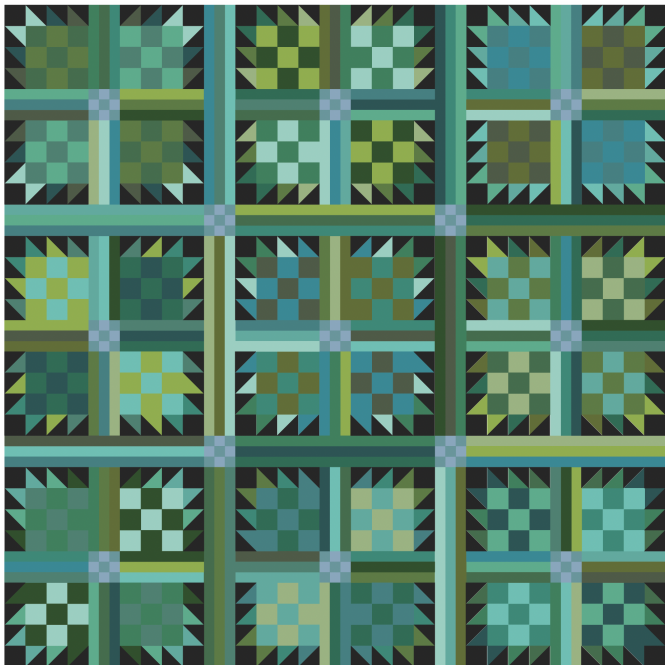
9 Patch Cornerstone F8: Super Black, White// BG fabric: White



Solid Fabric Names:

18 FQs for the blocks: Stone, Flax, Cantaloupe, Sisters Pink, Blue, Amelia Blue, Sweet Pea, Peony, Ruby, Fuschia, Pale Pink, Super Black, Bunny Hill Blue, Amber, Magenta, Rose Water, Flamingo, Rose

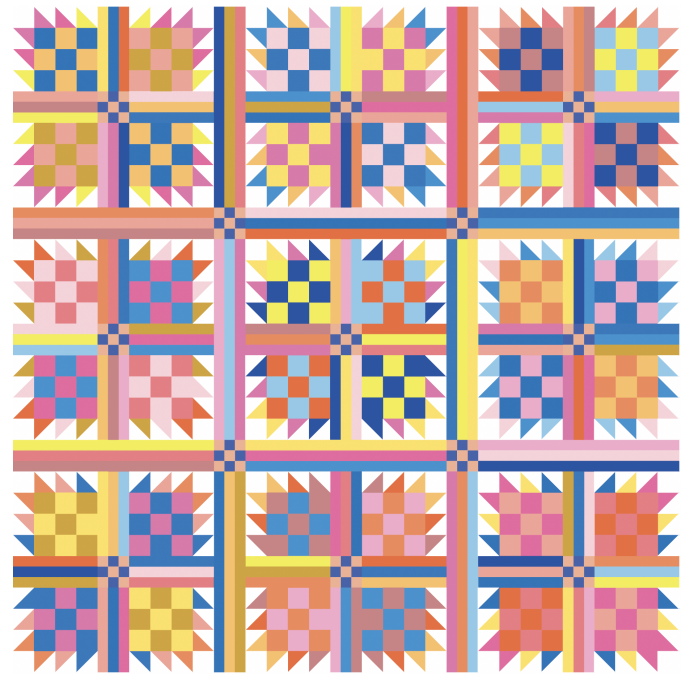
9 Patch Cornerstone F8: Lapis, Frost// BG fabric: Sienna



Solid Fabric Names:

18 FQs for the blocks: Evergreen, Basil, Kansas Green, Cucumber, Spearmint, Jade, Jungle, Emerald, Bermuda, Caribbean, Scuba, Dark Teal, Turquoise, Limeade, Avocado, Dill, Aqua, Bettys Teal

9 Patch Cornerstone F8: Glacier, Teal// BG fabric: Black



Solid Fabric Names:

18 FQs for the blocks: Bright Sky, Little Boy Blue, Surf, Cornflower, Azure, Carnation, Tea Rose, Melon, Tangerine, Petal Pink, Amelia Pink, Fuschia, Sisters Pink, Saffron, Goldenrod, Electric Lemon, Yellow, Rose Water

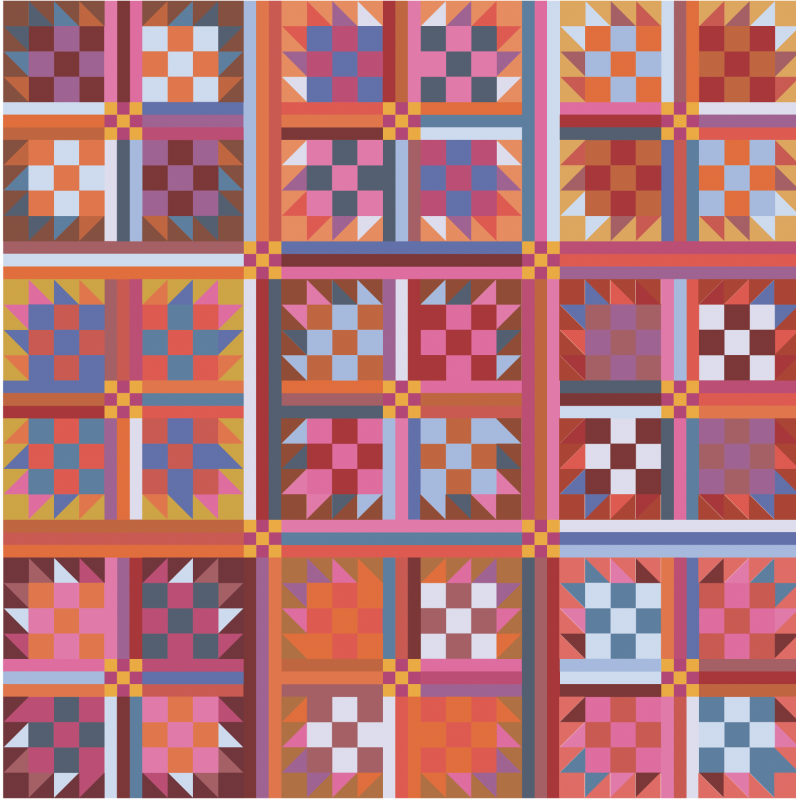
9 Patch Cornerstone F8: Peach, Dusk// BG fabric: White



# GOLDIE QUILT

Color Inspiration in Bella Solids

TWENTY FABRICS EACH plus NINE F8s for BACKGROUND

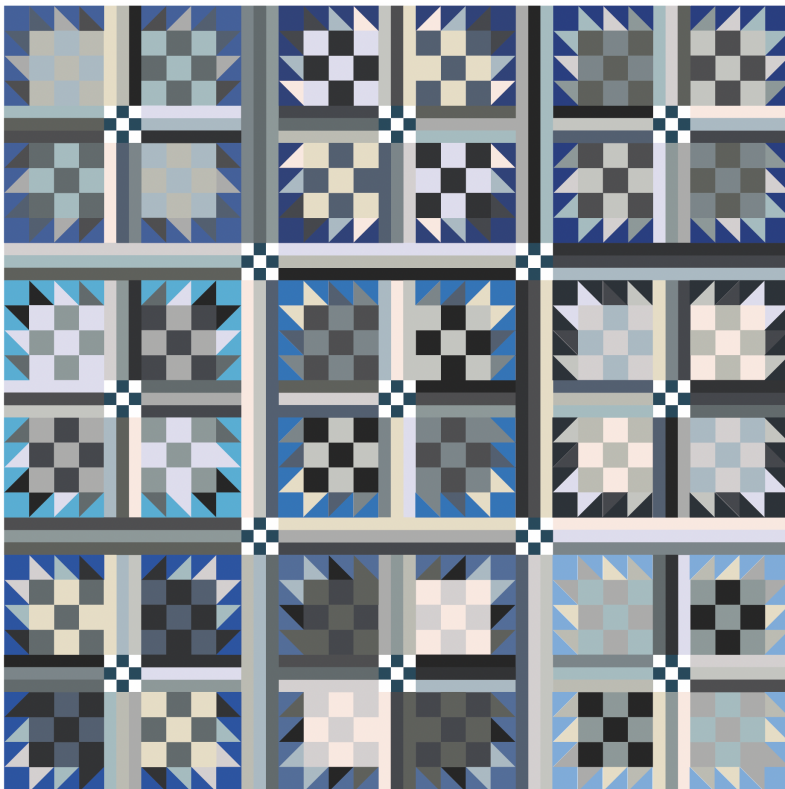


Solid Fabric Names:

18 FQs for the blocks: Magenta, Cherry, Brick Red, Geranium, Persimmon, Longhorn, Clementine, Orange, Blush, Fuschia, Peony, Lt Blue, Baby Blue, Periwinkle, Ash, Indigo, Violet, French Blue

9 Patch Cornerstone F8s: Berrylicious, Marigold

BG fabric F8s: Rust, Melon, Golden Wheat, Betty Orange, Spice, Saffron, Rhubarb, Amber, Nectar



Solid Fabric Names:

18 FQs for the blocks: Bunny Hill Blue, Silver, Driftwood, Super Black, Washed Black, Steel, Moonbeam, Mist, Indigo, Flint, Pale Pink, Graphite, Etchings Slate, Gray, Fog, Ash, Natural, Lead

9 Patch Cornerstone F8s: Prussian Blue, White

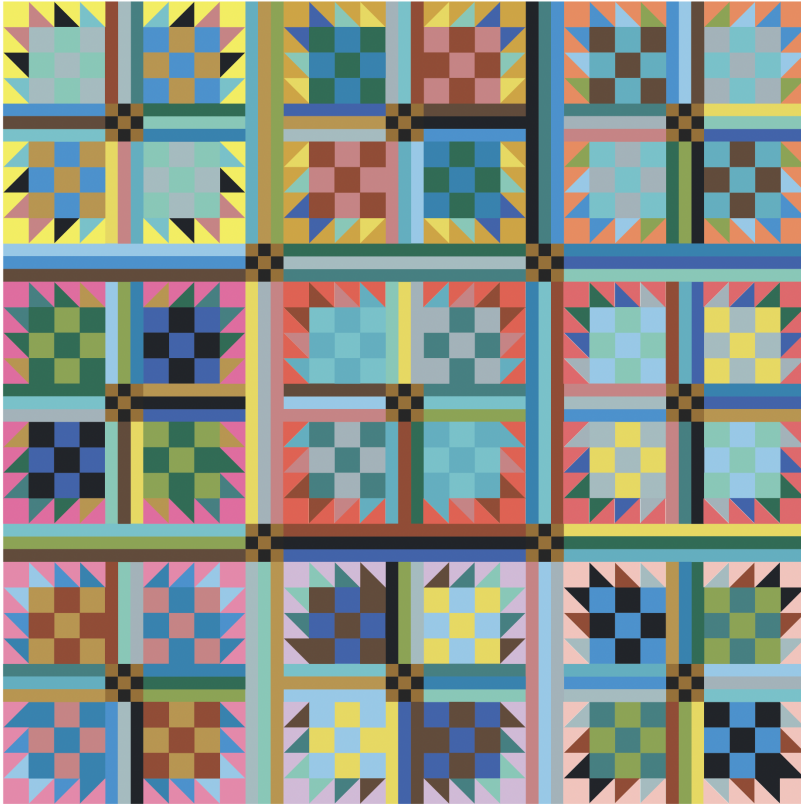
BG fabric F8s: Cobalt, Sapphire, Lapis, Navy, Bright Sky, Capri, Azure, Bettys Blue, Skylight



# GOLDIE QUILT

Color Inspiration in Bella Solids

TWENTY FABRICS EACH plus NINE F8s for BACKGROUND

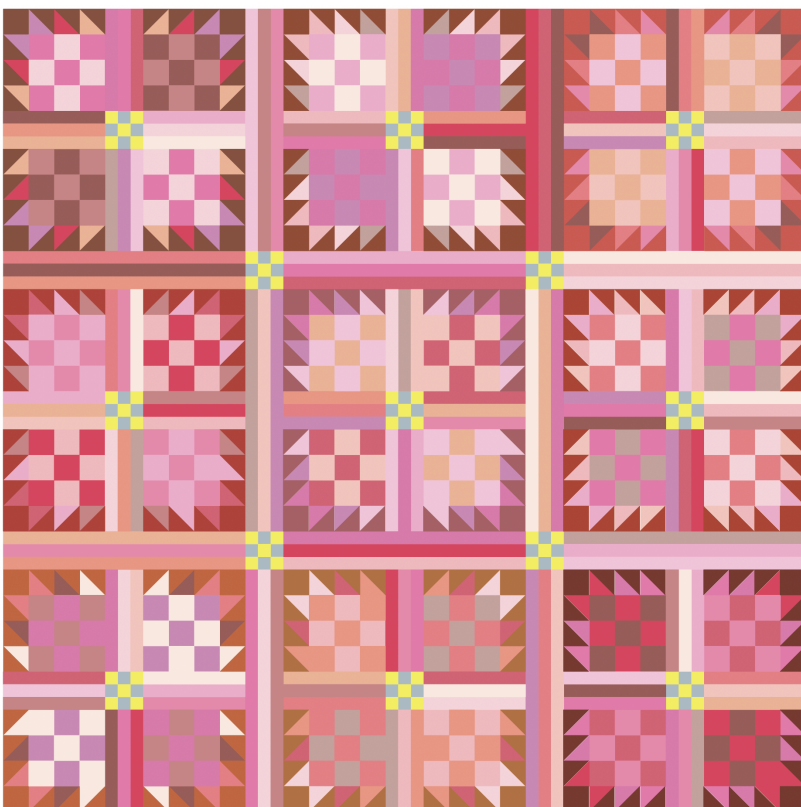


Solid Fabric Names:

18 FQs for the blocks: Mist, Storm, Amelia Blue, Little Boy Blue, Bright Turquoise, Seafoam, Blue Chill, Surf, Leaf, Citrine, Harvest Gold, Rose Water, Spice, Earth, Peacoat, Scuba, Jungle, Seaglass

9 Patch Cornerstone F8s: Caramel, Black

BG fabric F8s: Electric Lemon, Saffron, Melon, Flamingo, Mandarin, Fuschia, 30s Pink, Freesia, Bubblegum



Solid Fabric Names:

18 FQs for the blocks: Sisters Pink, Pale Pink, Parfait Pink, Princess, Bubblegum, Bunny Hill Pink, Rose Water, Coral Rose, 30s Pink, Petal Pink, Peach, Tea Rose, Chrysanthemum, Azalea, Amelia Pink, Peony, Coral, Sweet Pea

9 Patch Cornerstone F8s: Electric Lemon, Bunny Hill Blue

BG fabric F8s: Rust, Spice, Persimmon, Betty Orange, Chiptole, Longhorn, Amber, Cinnamon, Blush