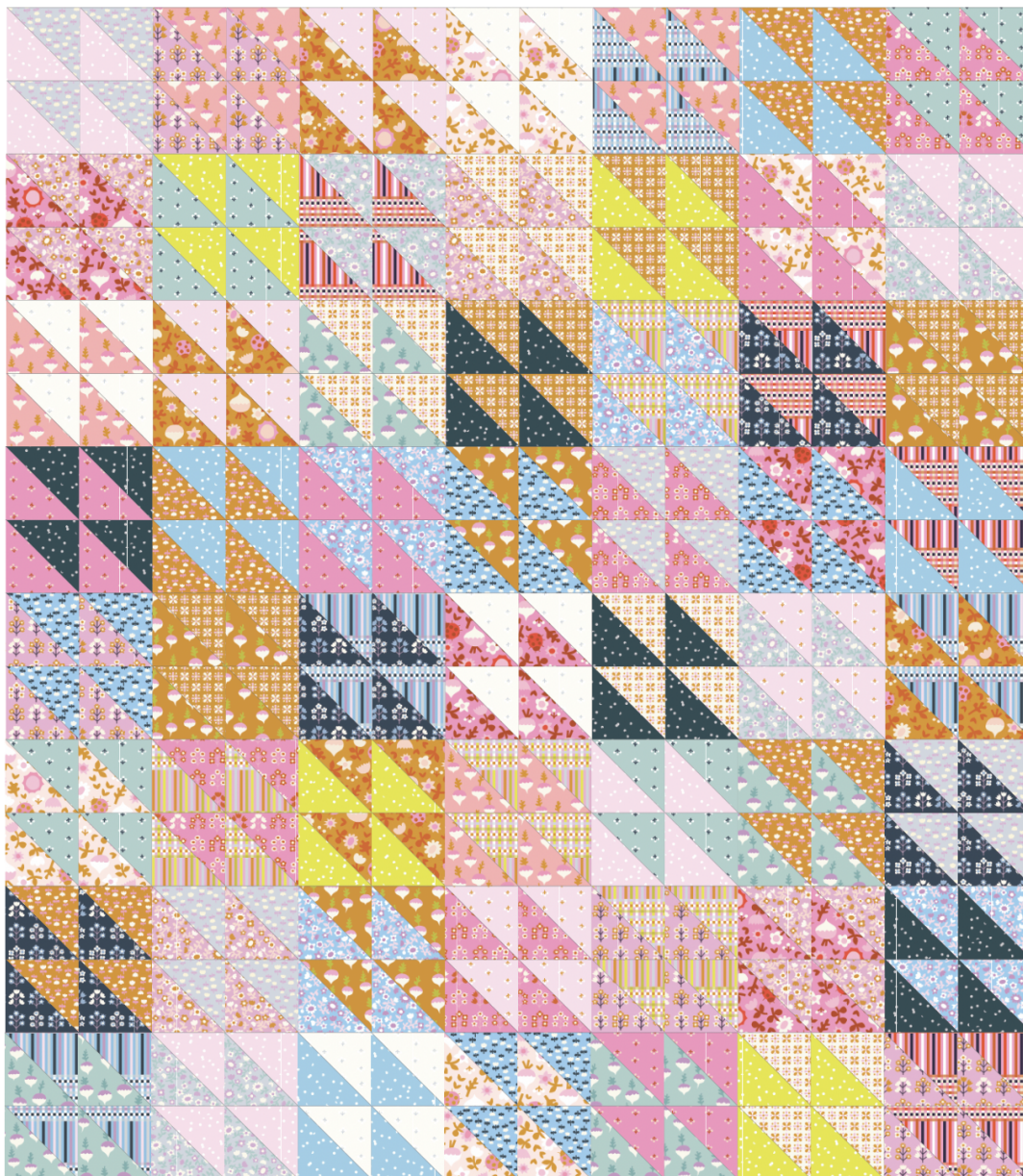




SUGAR QUILT



THEN CAME JUNE

A quilt pattern tutorial by Meghan Buchanan.

Baby 45" x 54" // Sm Throw 54" x 63" // Lg Throw 63" x 72"
Twin 72" x 81" // Queen 99" x 108" // King 108" x 108"



@thencamejune #sugarquilt #thencamejunepatterns

Material Requirements

QUILT SIZE	NO BACKGROUND FABRIC	WITH BACKGROUND FABRIC	FINISHING MATERIALS
BABY SIZE 45" x 54"	30 - F8s 15 - FQs 12 - 1/4 yds 60 - layer cake sqs	1 1/2 yds BG PLUS one of the following: 15 - F8s 8 - FQs 6 - 1/4 yds 30 - layer cake sqs	Backing - 3 yds Binding - 1/2 yd Batting - 49" x 58"
SMALL THROW 54" x 63"	42 - F8s 21 - FQs 17 - 1/4 yds 84 - layer cake sqs	2 1/8 yds BG PLUS one of the following: 21 - F8s 11 - FQs 9 - 1/4 yds 42 - layer cake sqs	Backing - 3 1/2 yds Binding - 1/2 yd Batting - 58" x 67"
LARGE THROW* 63" x 72"	56 - F8s 28 - FQs 23 - 1/4 yds 112 - layer cake sqs	2 3/4 yds BG PLUS one of the following: 28 - F8s 14 - FQs 12 - 1/4 yds 56 - layer cake sqs	Backing - 4 yds Binding - 1/2 yd Batting - 67" x 76"
TWIN 72" x 81"	72 - F8s 36 - FQs 29 - 1/4 yds 144 - layer cake sqs 15 - 1/2 yds	3 1/2 yds BG PLUS one of the following: 36 - F8s 18 - FQs 15 - 1/4 yds 72 - layer cake sqs 8 - 1/2 yds	Backing - 5 yds Binding - 2/3 yd Batting - 76" x 85"
QUEEN 99" x 108"	132 - F8s 66 - FQs 53 - 1/4 yds 264 - layer cake sqs 27 - 1/2 yds	6 yds BG PLUS one of the following: 66 - F8s 33 - FQs 27 - 1/4 yds 132 - layer cake sqs 14 - 1/2 yds	Backing - 9 yds Binding - 7/8 yd Batting - 103" x 112"
KING 108" x 108"	144 - F8s 72 - FQs 58 - 1/4 yds 288 - layer cake sqs 29 - 1/2 yds	6 1/2 yds BG PLUS one of the following: 72 - F8s 36 - FQs 29 - 1/4 yds 144 - layer cake sqs 15 - 1/2 yds	Backing - 9 3/4 yds Binding - 7/8 yd Batting - 112" x 112"

*Large Throw is the cover quilt with no background fabric.

** All Backings calculate 4" of overage for longarm quilting.

NOTE: The Cover Quilt uses a FQ Bundle of Petunia, a line by Kim Kight.

F8 - should measure 9" x 21"
FQ - should measure 18" x 21"
Layer Cake is a 10" square

Basic Instructions

- Please read through all instructions before beginning.
- RST means Right Sides Together.
- HST means Half Square Triangle.
- All seam allowances are 1/4 inch unless otherwise noted.
- WOF means Width of Fabric.
- Pattern assumes WOF is 42" and unwashed.
- For pattern corrections: <http://www.thencamejune.com/pattern-corrections>

Designed by Then Came June.
Website: www.thencamejune.com
Email: thencamejune@gmail.com

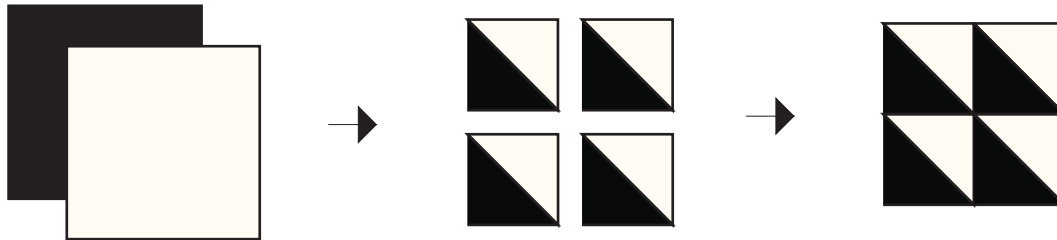
Please do not copy or redistribute. Copyright May 2022.

**Please share progress on social media with #sugarquilt #thencamejunepatterns

Pattern Information

The Sugar Quilt Pattern is a fun, simple Half Square Triangle (HST) Quilt. I created this pattern as an exercise in meditative sewing that uses a single repeating quilt block - the HST. You can customize this pattern so easily to use your stash, your fabric FQ bundle, layer cakes, yardage or scraps! Also, the Sugar Quilt Pattern makes it easy to jump in and out of working on it. You can sew a little or a lot at a time.

The Sugar Quilt Block is made using 4 of the same HSTs. They are then sewn together to make a 4 patch of HSTs. The HSTs are made using the Quad method where you make 4 at a time. And every single starting square in this pattern is an 8" cut.



The Sugar Quilt Pattern can be made using No Background fabric - it creates a fun scrappy looking quilt top. OR, you can make this pattern using one consistent background fabric that will be half of each HST. The other half of the HSTs are made using other fabrics - F8s, FQs, 1/4 yards, layer cakes etc.

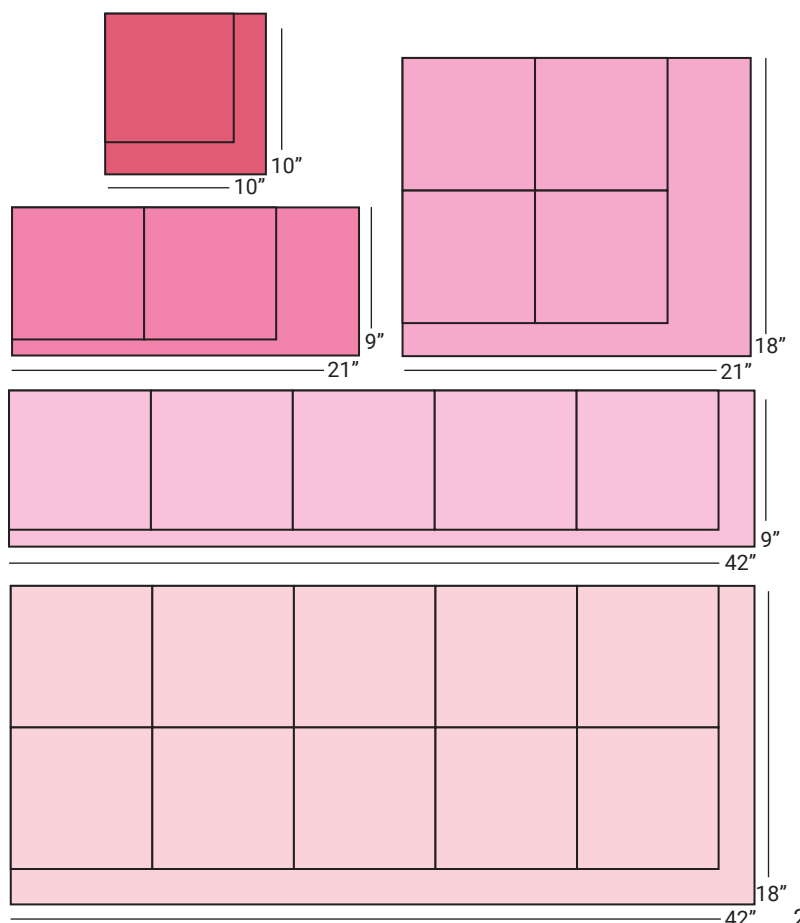
Cutting Instructions

NO BACKGROUND FABRIC QUILT

Cut the following number of 8" squares per size:

BABY - 60
SMALL THROW - 84
LARGE THROW - 112
TWIN - 144
QUEEN - 264
KING - 288

You can get the following number of 8" squares from each type of fabric material:



WITH BACKGROUND FABRIC QUILT

Cut the following number of 8" squares per size:

BABY - 30
SMALL THROW - 42
LARGE THROW - 56
TWIN - 72
QUEEN - 132
KING - 144

NOTE: The smaller cuts of fabric create a more scrappy look. The larger the cut of fabric the more consistent the quilt will look.

Cutting Instructions

WITH BACKGROUND FABRIC QUILT

Cut the following number of 8" squares per size out of your background fabric:

BABY - Cut (6) 8" x WOF strips. Subcut (30) 8" squares.

SMALL THROW - Cut (9) 8" x WOF strips. Subcut (42) 8" squares.

LARGE THROW - Cut (12) 8" x WOF strips. Subcut (56) 8" squares.

TWIN - Cut (15) 8" x WOF strips. Subcut (72) 8" squares.

QUEEN - Cut (27) 8" x WOF strips. Subcut (132) 8" squares.

KING - Cut (29) 8" x WOF strips. Subcut (144) 8" squares.

BINDING

You will cut the following 2.5" x WOF strips per size:

BABY - 6

SMALL THROW - 6

LARGE THROW - 7

TWIN - 8

QUEEN - 11

KING - 11

Sewing Instructions

Now that all of our 8" squares are cut, it is time to pair them up! Two 8" squares will make (4) HSTs and one single Sugar Block. If you are making the NO Background Fabric Quilt, you will pair up any two 8" squares together. If you are making the WITH Background Fabric Quilt then each pair needs to have one 8" BG square and one 8" other fabric square. The following number of pairs is needed per size:

BABY - 30 pairs

TWIN - 72 pairs

SMALL THROW - 42 pairs

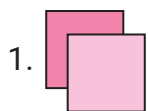
QUEEN - 132 pairs

LARGE THROW - 56 pairs

KING - 144 pairs

MAKE THE QUAD HALF SQUARE TRIANGLES

To make one single Sugar Block, follow the instructions below.



1. Place two 8" squares, RST.



2. Pin squares together to keep in place.



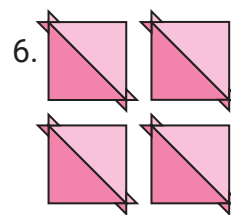
3. Sew a 1/4" seam continually around the outside edges, turning at 1/4" away from the corners.



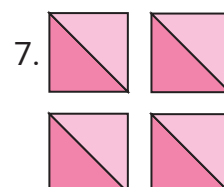
4. Cut 2 times diagonally from corner to corner.



5. Now you have 4 HST.



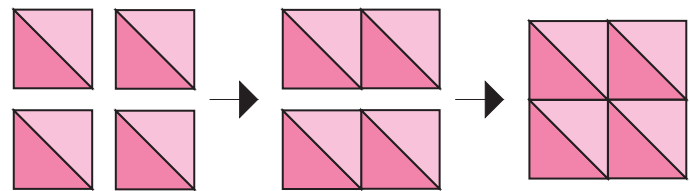
6. Press seams open.



7. Trim each HST to 5" for each size.

Sewing Instructions

8. Take the 4 HSTs and lay them out according to the diagram. All 4 should have the diagonal seam facing the same direction.



9. Pin and sew, RSTs, per row. Press seams open.

10. Pin and sew, RSTs the two rows. Press seam open. The Sugar Block should measure a 9 1/2" square.

You will need the following amount of Sugar Blocks per size:

BABY - 30 blocks

TWIN - 72 blocks

SMALL THROW - 42 blocks

QUEEN - 132 blocks

LARGE THROW - 56 blocks

KING - 144 blocks

Quilt Assembly

Once all the Sugar Blocks are made, now it's time to play with your layout! The Sugar Quilt is laid out in a grid and can be sewn together in rows. The rows then get sewn together to finish your quilt top.

BABY - 5 x 6 grid - finishes at 45" x 54"

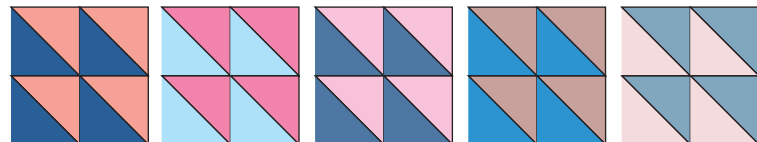
SMALL THROW - 6 x 7 grid - finishes at 54" x 63"

LARGE THROW - 7 x 8 grid - finishes at 63" x 72"

TWIN - 8 x 9 grid - finishes at 72" x 81"

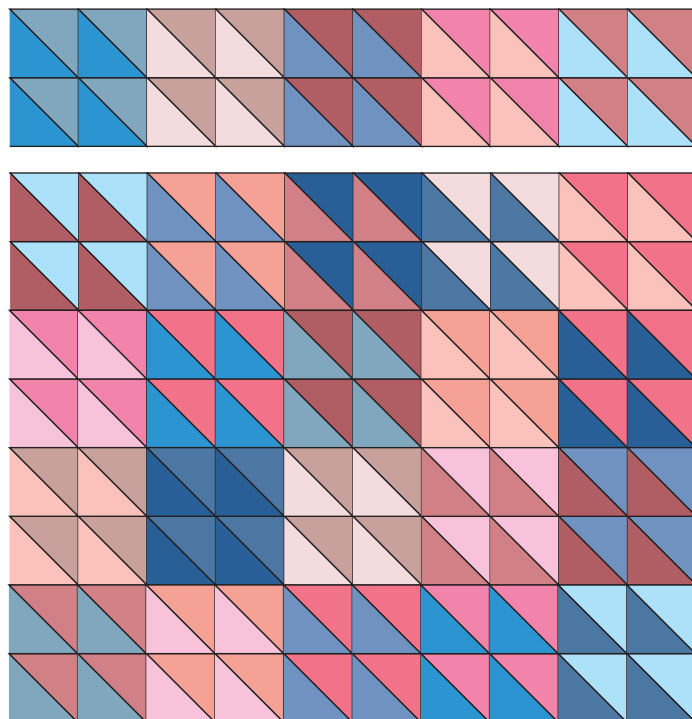
QUEEN - 11 x 12 grid - finishes at 99" x 108"

KING - 12 x 12 grid - finishes at 108" x 108"



BABY SIZE - Pin and sew (5) Sugar Blocks together to form a row. Do this (6) times total. You can press your seams open or you can press each row in the opposite direction of the row above to nest your seams. Then, pin and sew your rows together. Congrats! Your quilt top is complete!

This Sugar Quilt uses NO Background Fabric but 15 FQs.

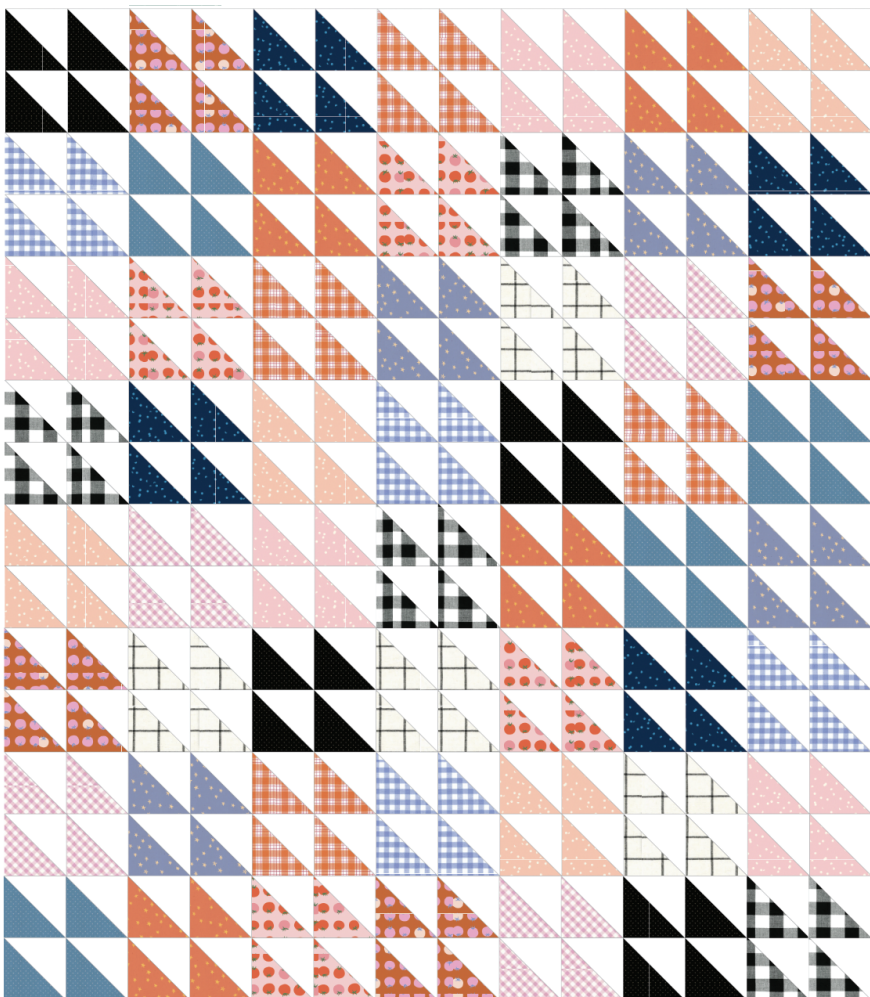
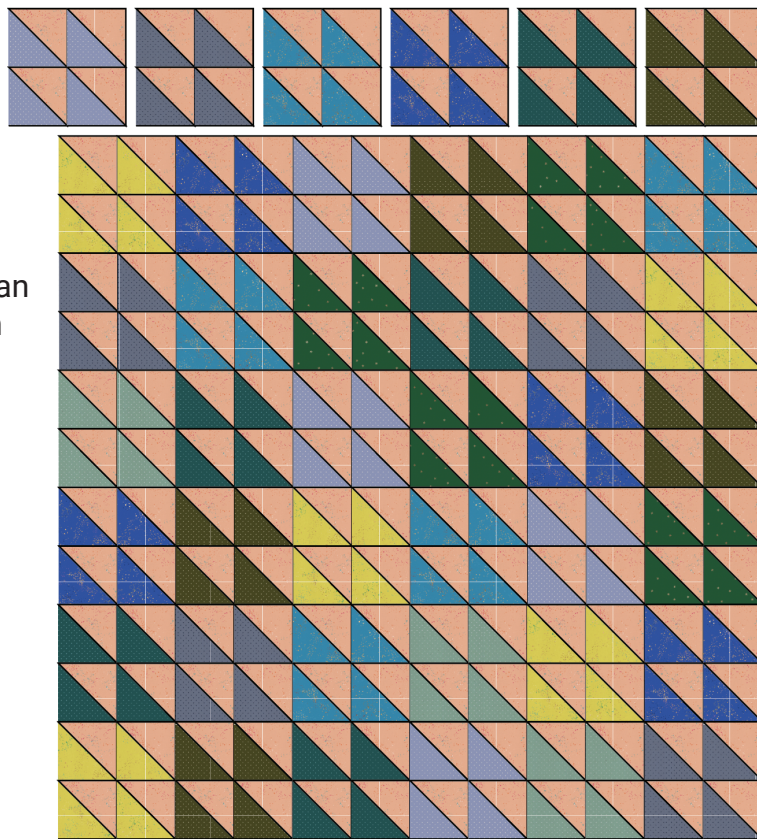


Quilts not to scale.

Quilt Assembly

SMALL THROW SIZE - Pin and sew (6) Sugar Blocks together to form a row. Do this (7) times total. You can press your seams open or you can press each row in the opposite direction of the row above to nest your seams. Then, pin and sew your rows together. Congrats! Your quilt top is complete!

This Sugar Quilt uses WITH Background Fabric at 2 1/8 yards and (9) 1/4 yards.



LARGE THROW SIZE - Pin and sew (7) Sugar Blocks together to form a row. Do this (8) times total. You can press your seams open or you can press each row in the opposite direction of the row above to nest your seams. Then, pin and sew your rows together. Congrats! Your quilt top is complete!

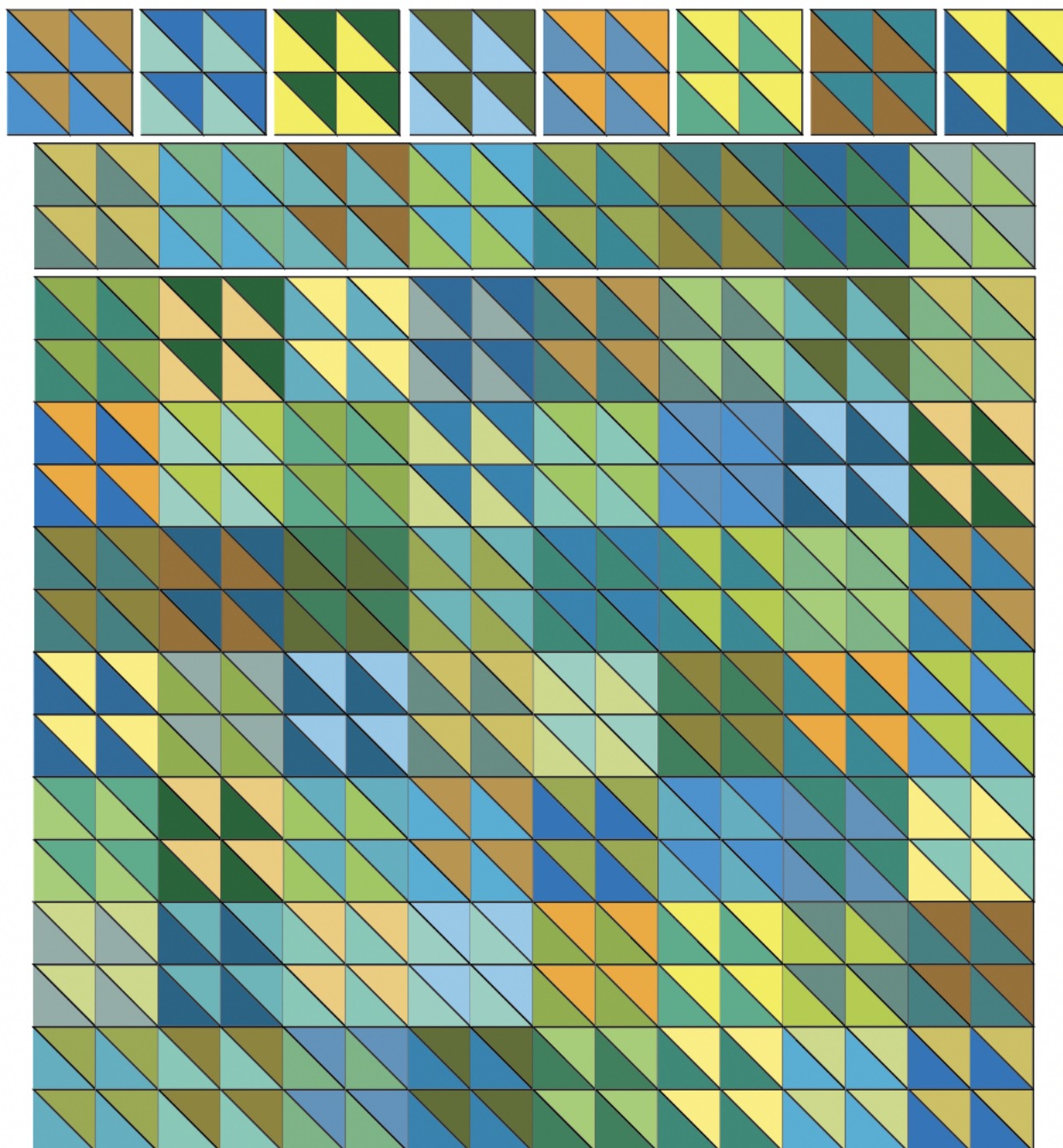
This Sugar Quilt uses WITH Background Fabric at 2 3/4 yards and (14) FQs.

Quilts not to scale.

Quilt Assembly

TWIN SIZE - Pin and sew (8) Sugar Blocks together to form a row. Do this (9) times total. You can press your seams open or you can press each row in the opposite direction of the row above to nest your seams. Then, pin and sew your rows together. Congrats! Your quilt top is complete!

This Sugar Quilt uses NO Background Fabric but (36) FQs.



Quilts not to scale.

Quilt Assembly

QUEEN SIZE - Pin and sew (11) Sugar Blocks together to form a row. Do this (12) times total. You can press your seams open or you can press each row in the opposite direction of the row above to nest your seams. Then, pin and sew your rows together. Congrats! Your quilt top is complete!

This Sugar Quilt uses NO Background Fabric but (27) 1/2 yards.

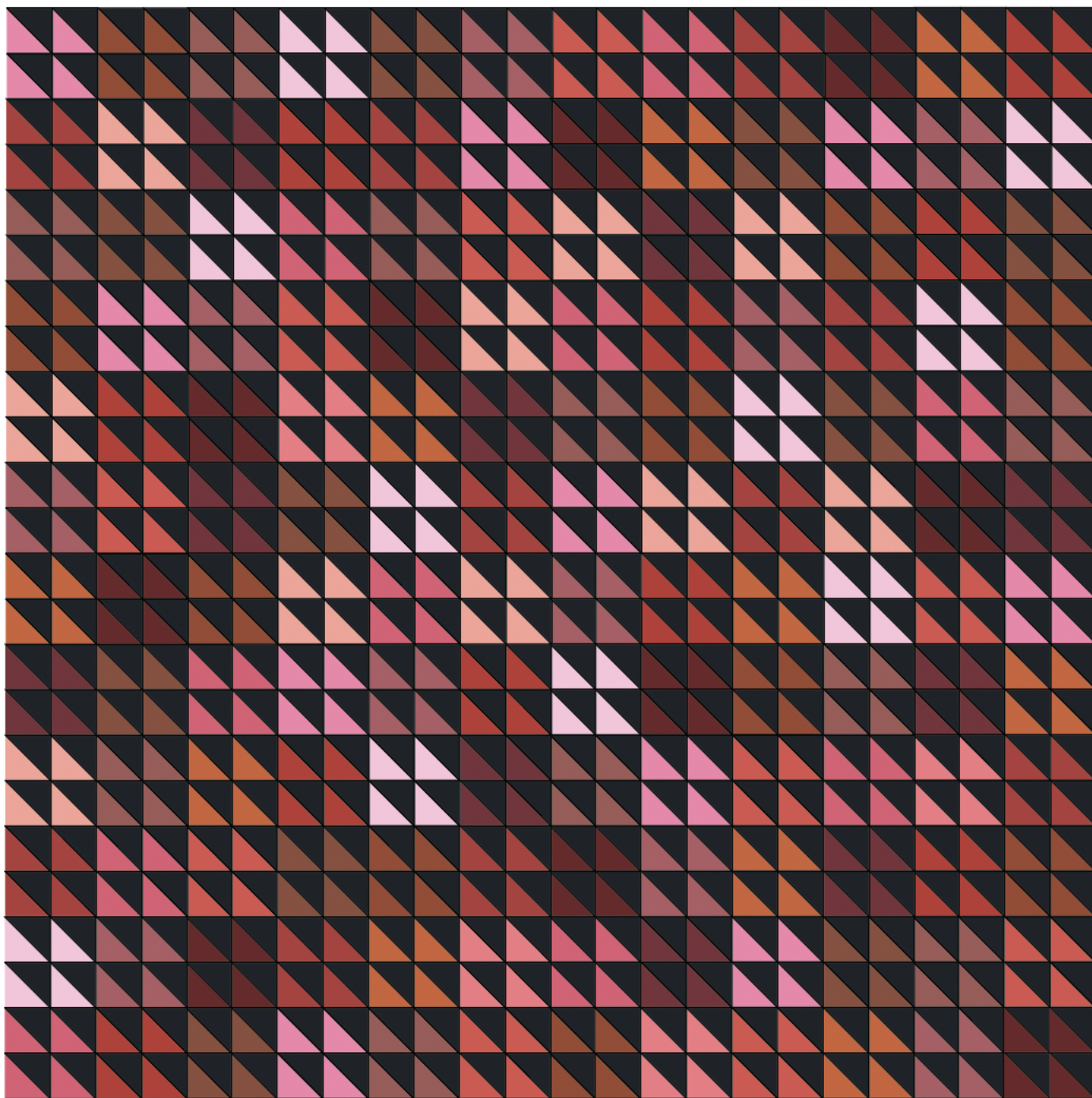


Quilts not to scale.

Quilt Assembly

KING SIZE - Pin and sew (12) Sugar Blocks together to form a row. Do this (12) times total. You can press your seams open or you can press each row in the opposite direction of the row above to nest your seams. Then, pin and sew your rows together. Congrats! Your quilt top is complete!

This Sugar Quilt uses WITH Background Fabric of 6 1/2 yards and (15) 1/2 yards.

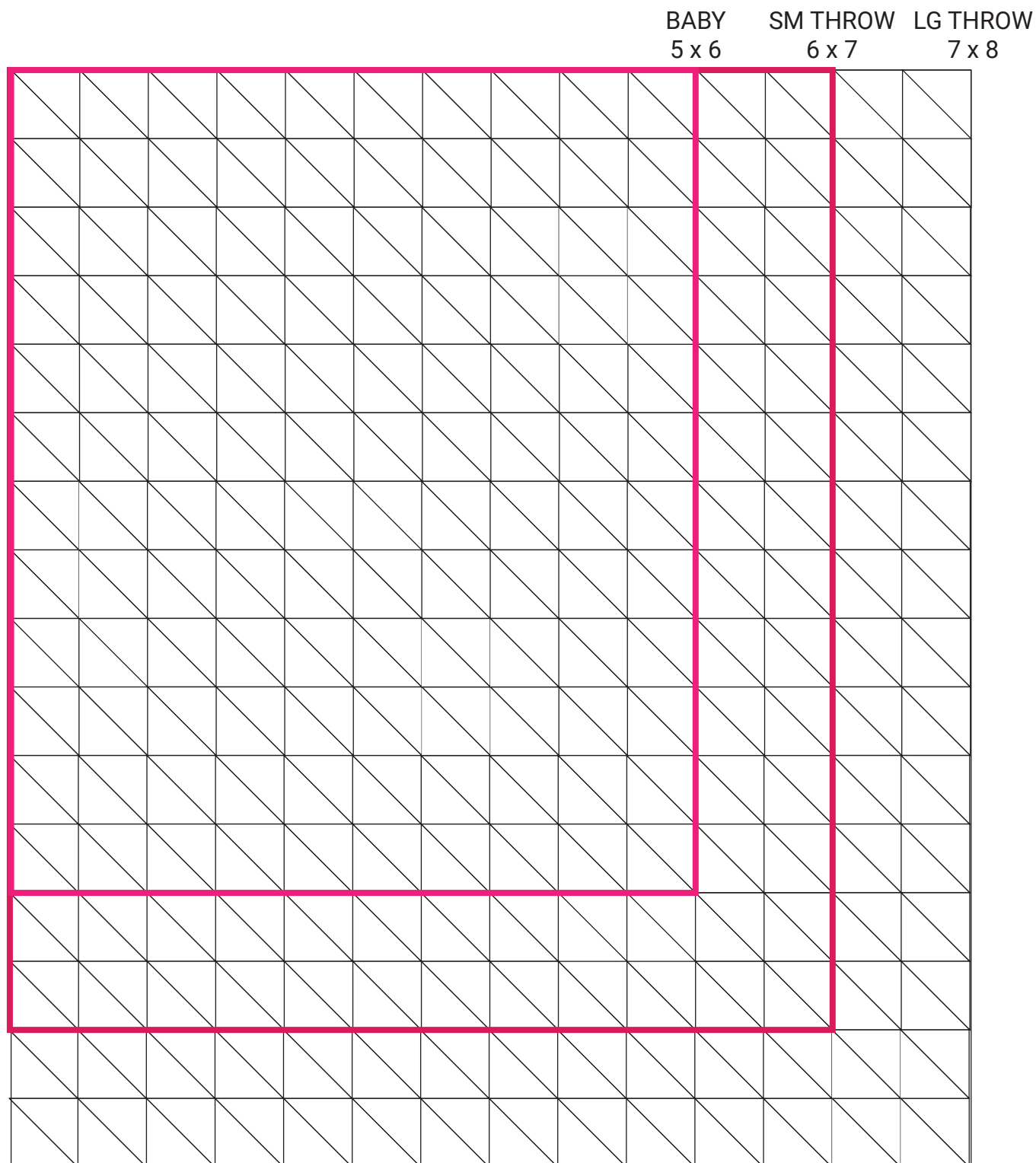


Quilts not to scale.

Finish Your Quilt

1. Piece together backing fabric and press seam(s) open.
2. Layer the backing wrong side up, and the batting and quilt top right side up.
3. Baste as desired and quilt as desired.
4. Trim excess batting and backing. Square quilt.
5. Bind using your 2 1/2" strips.

Color Your Own



TWIN QUEEN KING
8 x 9 11 x 12 12 x 12

