



02 OFFWHITE



09 MOONLIGHT



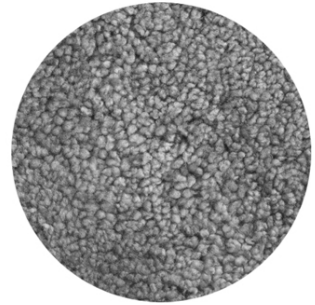
08 HONEY



04 ANTHRACITE



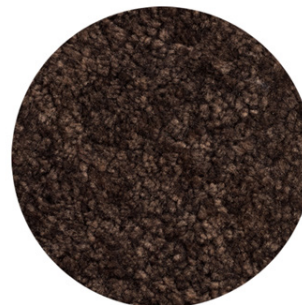
01 BLACK



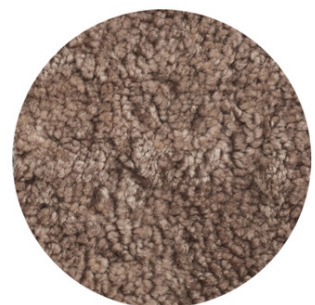
22 SCANDINAVIAN
GREY



14 CHARCOAL



15 ESPRESSO



07 SAHARA

Material fact sheet



SKANDILOCK CURLY 17mm

Art.No 1111001-

Skandilock Curly 17mm is developed for furniture upholstery but can also be used for different furnishing assignments. The wool has a curly texture and is high in density which makes it durable and soft.

Curly 17mm comes in three color collections. In the Classic Collection, the wool has been dyed with highlighted tips and darker base which gives the overall appearance a beautiful marbled finish. In the Standard Collection the wool is dyed in one color tone which gives an even end result that enhances the curly texture of the wool. Limited Collection are colors that varies in stock and therefore the lead times can be longer when ordered in larger quantities.

Origin raw material

Australian Crossbred, Lamb/Sheep

Leather

Thickness: 1-3mm

Wool

Length: 17 mm

Curly character

High density

Tanning process

Offwhite - Synthetic tanned, chrome-free

Remaining colors - Synthetic tanned/Crom III

Color fastness to artificial light

(ISO 105-B02:2014)

Classic collection:	>5
Standard collection:	>5
Limited collection:	>5
Off-White (non-dyed):	4-5
Ruby:	4-5
Moonlight:	3-4

Color fastness to rubbing

(DIN EN ISO 105-X12:2016)

Dry: 4-5 Wet: 3-4

Fire safety

Tested and approved in accordance with:

EN1021-1, EN1021-21, CAL. TB117 (US) , FAR §23.853 (AUS)

Washability

30 degrees Celsius. No bleaching/No ironing

spencer
interiors

spencer interiors
www.spencerinteriors.com