
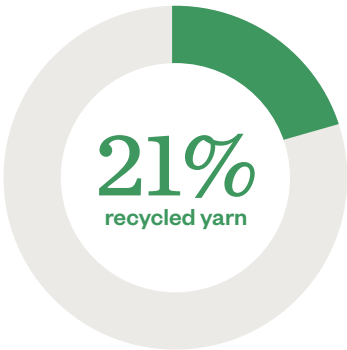



5 years guarantee

General Information	Specifications	Care		
 <p><b>Composition</b> 79%PES 10%PES REC 6%OF REC 5%CO REC</p> <p><b>Width</b> 140 + 4cm</p> <p><b>Weight</b> 467 gr/m<sup>2</sup> ± 5 % 654 gr/lm ± 5 %</p> <p><b>Custom code</b> UE: 5801.36.00 USA: 5801.36.00.20</p> <p><b>Laboratory test number</b> 802.069 / 802.256</p>	<p><b>Seam slippage resistance (mm)</b> Warp: 2,90 Weft: 3,00 EN ISO 13936/2:2004</p> <p><b>Abrasion resistance (End point)</b> 60.000 EN ISO 12947-2:1998</p> <p><b>Abrasion resistance (change of aspect: 3000 cycles)</b> 4 EN ISO 12947/4:1998 and EN 14465:2003 (Annex A)</p> <p><b>Pilling resistance</b> 5 EN ISO 12945/2:2000</p> <p><b>Lightfastness</b> 5-6 EN ISO 105-B02:1998 and 105 B02/A01:2002</p>	<p><b>PERFORMANCE+</b> Easy to clean, longlasting fabrics</p> <p><b>Washing conditions</b> </p> <p><b>Soiling and cleanability</b> 4-5 FORD FLTM BN 112-08:2005</p> <p><b>Dimensional change domestic washing and drying (%)</b> Warp: -1 Weft: -1 EN ISO 3759:2008, EN ISO 6330:2000 and EN ISO 5077:2008</p> <p>When confectioning or washing the sofa cover with velcro please attach a protective cloth.</p> <p><b>Ignitability</b></p> <table border="0"> <tr> <td>BS5852 Source 0 EN1021-Part 1:2006 CAL TB 117:2013 NFPA 260:2013</td> <td>Upon Request: BS5852 Source 1 EN1021-Part 2:2006 BS 7176 Low Hazard UNI 9175 Clase 3IM</td> </tr> </table>	BS5852 Source 0 EN1021-Part 1:2006 CAL TB 117:2013 NFPA 260:2013	Upon Request: BS5852 Source 1 EN1021-Part 2:2006 BS 7176 Low Hazard UNI 9175 Clase 3IM
BS5852 Source 0 EN1021-Part 1:2006 CAL TB 117:2013 NFPA 260:2013	Upon Request: BS5852 Source 1 EN1021-Part 2:2006 BS 7176 Low Hazard UNI 9175 Clase 3IM			

## Environmental considerations

 <p><b>21%</b> recycled yarn</p> <p>10% GRS recycled PET bottles 6% Circular yarn from own waste 5% Recycled CO 79% PES</p>	<p><b>Life cycle analysis</b> Cradle to gate assessment. From raw material extraction to finished fabric: resources, yarn production and dyeing, fabric weaving and finishing, waste recycling.</p> <p><b>Carbon footprint</b> <b>4,82</b> kg CO<sub>2</sub> eq / m 5,3% less since 2020</p> <p><b>Water consumption</b> <b>109,68</b> liters / m 17,52% less since 2020</p>	<p> <b>UNIVERSITAT POLITÈCNICA DE CATALUNYA BARCELONATECH</b> Escola Superior d'Enginyeries Industrial, Aeroespacial i Audiovisual de Terrassa</p> <p>Study realized in collaboration with UPC</p> <p>Methodology: Life Cycle Analysis. ISO 14040 standard.</p> <p>Database: Own data, Ecoinvent 3.6 database and published data.</p> <p>Functional unit: 1 linear meters, 140 cm width.</p> <p>Calculation methodology: ReCiPe Midpoint (H) 2016 v1.0 ReCiPe Endpoint (H) 2016 v1.04 IPCC 2013 GWP 100a v1.03</p>
--	--	---

Designed and Crafted in Terrassa (Barcelona)

## Certificates



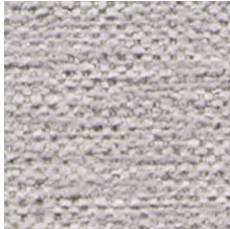
# crevin

## Sublim

## Color Swatches



01



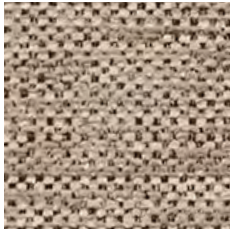
07



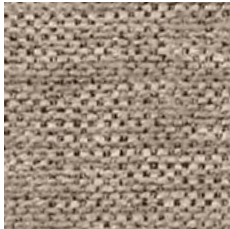
02



05



13



11



75



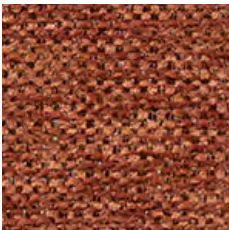
12



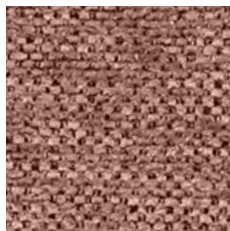
19



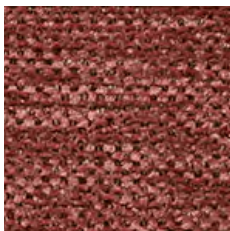
16



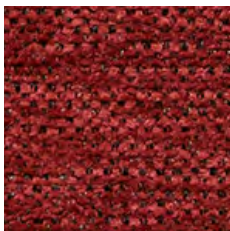
26



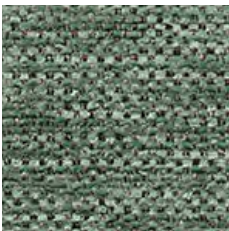
71



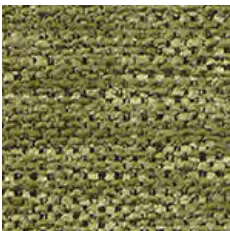
62



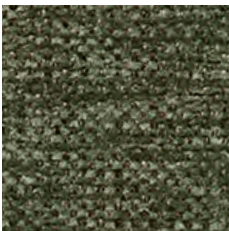
64



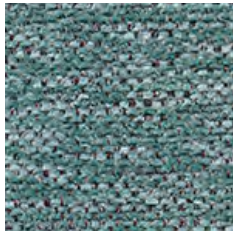
34



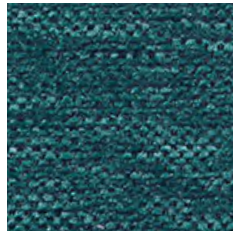
30



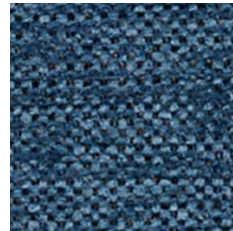
32



40



33



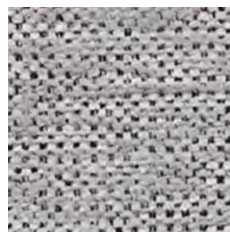
43



45



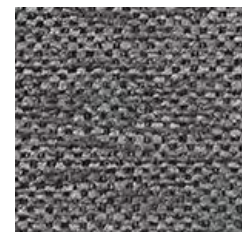
50



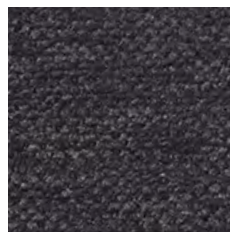
51



54



52



53



N° 01

# crevin

## Sublim

## Color Swatches

---



N° 07



N° 02



N° 05



N° 13





N° 11



N° 75



N° 12

# crevin

## Sublim

## Color Swatches

---



N° 19



N° 16



N° 26



N° 71



N° 62



# crevin

## Sublim

## Color Swatches

---



N° 64



N° 30



Nº 34



N° 32



N° 40



N° 33



N° 43



N° 45





N° 50





N° 54

# crevin

## Sublim

## Color Swatches

---



N° 52



N° 53

**spencer**  
**interiors**

spencer interiors  
[www.spencerinteriors.com](http://www.spencerinteriors.com)