



Why are Crevin
fabrics durable?

crevin
original fabrics

Why are Crevin fabrics durable?

At Crevin we firmly believe that great performance starts with design and is not about applying coatings or adding chemistry. Here we would like to share the two key dimensions of our design philosophy, both crucial to understanding the durability of Crevin fabrics: weave construction and yarn type.

WEAVE CONSTRUCTION

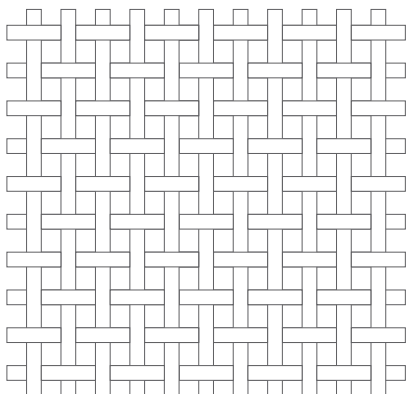
Crevin fabrics are double woven and possess a natural, built-in performance with no need for backings or coatings.

There are many methods to weave yarns into fabrics, all with different appearances, structures and effects on a fabric's durability. There is however one basic distinction to make when talking about weave construction: the difference between **single woven and double woven** fabrics.

Single woven fabrics

Single woven fabrics use a warp (vertical yarn) and weft (horizontal yarn), or sets of warps and wefts, that are interlaced at right angles to each other. For upholstery, single weaves, especially those that are loosely constructed, are often laminated with a lining fabric or coated with latex or flock backings, meant to add stability to the fabric's structure.

Since these backings and linings are simple to apply, they are a widely used constructional method. However, backings and coatings are by no means a guarantee for more durability, and from an environmental point of view, far from being considered a clean, sustainable technology.



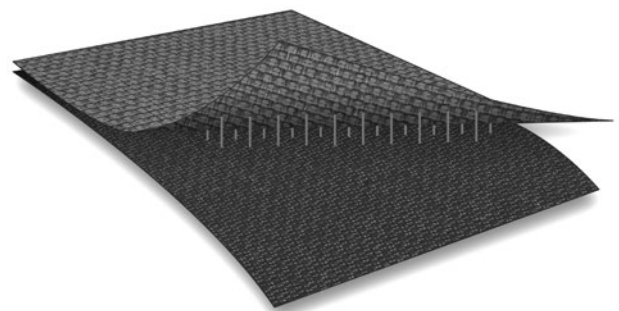
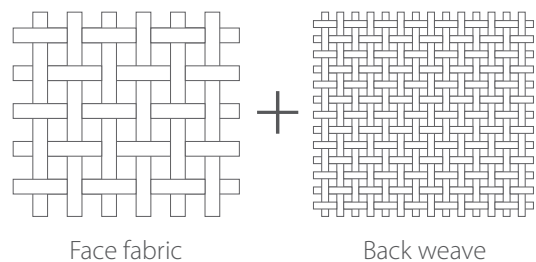
Double woven fabrics

Crevin fabrics are double-woven. Made on a special double warp loom, a double-woven fabric is a weave construction in which two warps are employed that are interconnected with one or more wefts to form a tightly woven, two-layered fabric.

In a double woven structure, the face fabric shows the colour and design, while the back-weave, often in a contrasting colour, works as a "mesh" that provides strength and stability.

A double weave construction helps to maintain the shape and fit of the upholstery, while it protects the fabric against seam slippage and offers better wrinkle and shrink resistance. For these reasons, a double woven fabric tends to be very durable.

In addition, double woven fabrics provide maximum breathability, preventing a general feel of discomfort often associated with backed or coated fabrics, like clamminess in cold or air-conditioned interiors, or a humid and stuffy feel in hot areas.



Why are Crevin fabrics durable?

YARN TYPE

Thanks to the use of locally sourced, premium yarns, Crevin fabrics have a lasting appearance and age beautifully over time.

What people often tend to forget when they purchase a sofa is that an upholstery fabric is subject to everyday wear and tear and that the quality of the fabric will highly determine what a sofa will feel and look like over time.

When an upholstery fabric is not properly designed for its intended usage, a sofa may age quickly and show wear effects like pilling, colour-loss, wrinkling, yarn breakage or soiling.

There is a direct correlation between yarn type and wear resistance. A low-cost fabric may account for a stunning short-term appearance, but the use of low-quality yarn will cause the fabric to deteriorate quickly. Yarn type, as well as fibre content, is also a major contributor to ease of maintenance, washability and colour retention.

In close liaison with local suppliers, our in-house design team participates actively in the development of the yarns used for Crevin fabrics, giving close consideration to how a design will interact with its intended environment (high- traffic, functional, decorative, commercial, outdoor,

etc.), while following the latest trends in material, colour and texture.

Due to the creative, often intuitive process of blending fibres, filaments and colours, Crevin fabrics offer something different from the mainstream, while demonstrating time and again that aesthetics and performance go perfectly hand in hand and true character particularly shows with age.





Why are Crevin
fabrics sustainable?

crevin
original fabrics

Why are Crevin fabrics sustainable?

Produce better, consume less, recycle more

In the light of growing mass production and consumption, sustainability is the term often adopted to indicate that textiles come from responsible suppliers. But the term is equally used as a simple marketing tool. That's why we would like to give insight into why Crevin fabrics are sustainable.

Keeping our business local

In the first decade of the new millennium, facing a rapidly globalizing economy, the textile industry shifted almost exclusively to low-cost economies. At the same time, Crevin kept their manufacturing local. In retrospect, a natural choice. Not just because we wanted to be in control of our production and work with our people, but because we wanted to make fabrics that had a story to tell.

Keeping our business human

While operating from a state-of-the-art mill, the 150-year old textile legacy of our hometown Terrassa is inextricably tied to our brand value and proposition, while the knowhow of three generations of local weavers remain our main source of inspiration.

Keeping our business purposeful

Today, respect for heritage, local materials and knowhow, is synonymous with the concept of sustainability. More

than making a positive impact on the environment, sustainability has evolved into a new approach to manufacturing. A sustainably made product is about the hand that made it, not the machine. It's about dedication and relating to what you do.

Keeping our business environmentally-friendly

Due to mass-production, the textile business has become one of the world's most polluting industries. Since 2010, our manufacturing is certified under ISO 14001, the environmental management system that compiles written principles to maximize resource efficiency and pollution control. Since 2014, we are a zero-waste company.

In sum: why are Crevin fabrics sustainable?

As fabric makers, we think of sustainability as a natural way of doing things. We commit to creating a design product that is timeless, long-lasting and delivered by expertise, the best materials and a creative and inclusive workplace, while we use natural resources responsibly and sensibly. This is the way we are and what moves us forward.

Download our sustainability statement [here](#).





**Sustainability
statement**

crevin
original fabrics

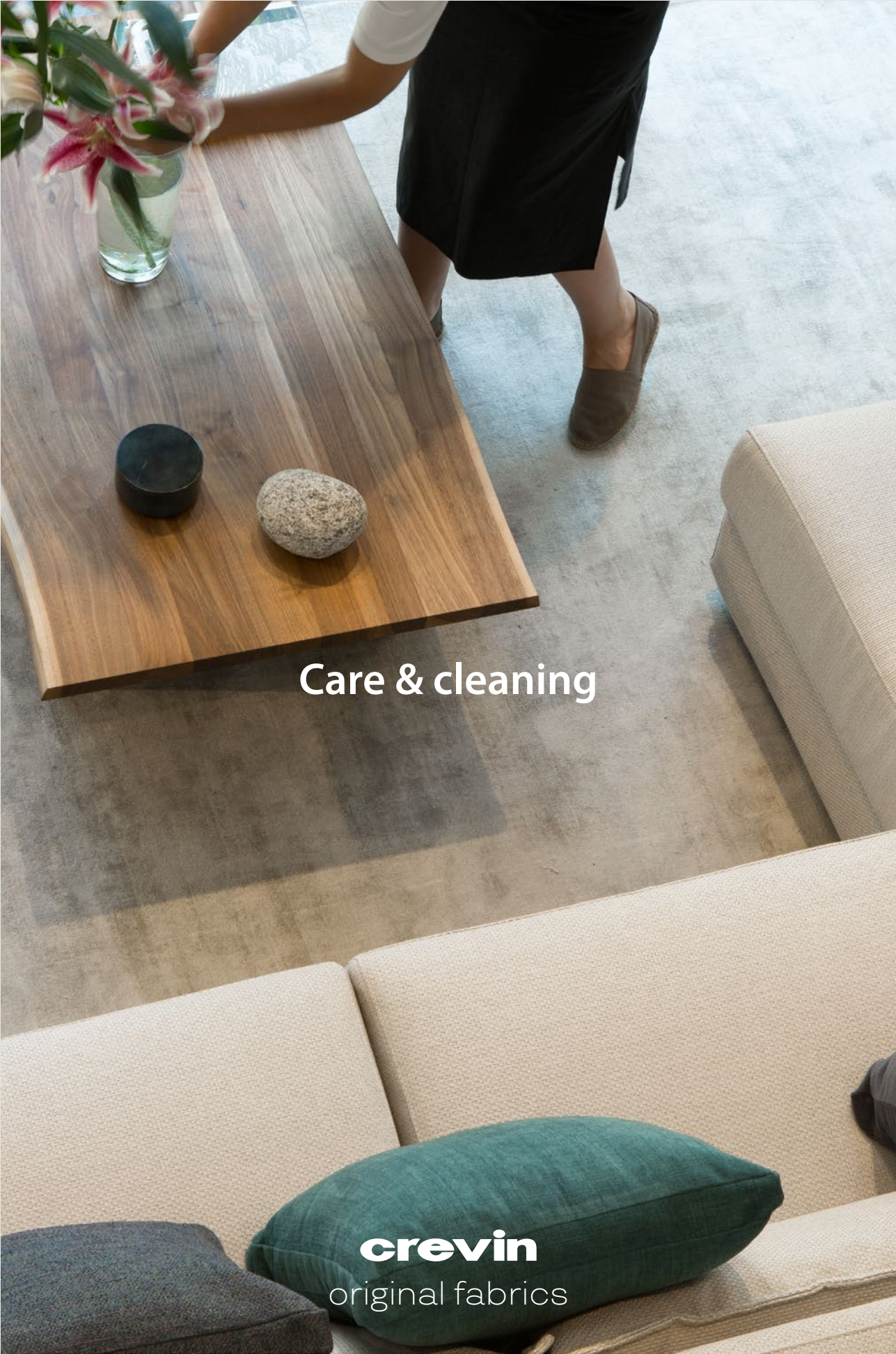
Sustainability statement

Crevin is committed to maintaining a sustainable and environmental-friendly business. The following key principles form part of our corporate identity and work routine.

1. Crevin fabrics are designed and manufactured with superior expertise and the highest of quality materials to ensure their longevity and sustainability.
2. Crevin fabrics possess a long and functional life and do not need to be replaced periodically.
3. The textile heritage and know-how of our local community form the basis for Crevin's design and manufacturing.
4. Crevin ensures that their fabrics are made in a way that the safety of persons and the environment is never put at risk.
5. Crevin is a 100% vertical mill that manufactures their entire product range on site, enabling an exhaustive and constant quality control over all production stages.
6. Crevin fabrics are created in accordance with the highest European product standards and are tested at accredited, independent laboratories.
7. Crevin uses raw materials from suppliers that at any time can provide safety information on chemical substances used, in compliance with REACH, the European regulation on the Registration, Evaluation and Authorization of Chemicals (EC 1907/2006).
8. Crevin's manufacturing process is carried out with the most optimal alignment of production phases from which inefficiencies are eliminated, accounting for less energy consumption, less waste and minimized CO2 emissions.
9. Crevin uses fibers and dyeing processes with the most efficient use of dye stuff and a quick and effective drying, saving in water and gas use.
10. Waste water from Crevin's finishing plant is purified before its disposal.

11. Crevin recycles 100% of their yarn remnants in post-industrial content.
12. Crevin successfully manages an in-house recycling program aimed at the recycling of yarn waste into new yarn in a closed loop process.
13. Crevin re-uses yarn cones and packaging materials internally until their final disposal for reprocessing.
14. Crevin's staff actively participates in electricity-saving programs and the recycling of waste materials like plastics, carton and paper, batteries, plastic water bottles, taps and cups. Specialized companies are contracted for their periodical pick-up and posterior reprocessing.
15. Crevin engages in the constant assessment of waste and excess materials and the identification of new paths for their recycling.
16. In their marketing activities Crevin aim at fostering understanding of a sustainable and environmentally responsible business.
17. Crevin's commitment to manufacturing a high quality product with the least possible impact on the environment has been documented in their ISO 9001 and ISO 14001 certifications.
18. Upon request Crevin shall provide more factual information to their customers concerning the above mentioned strategies and routines.





Care & cleaning

crevin
original fabrics

Care & cleaning

A Crevin fabric is a valuable product that is designed to be enjoyed over a long period of time. To keep furniture in optimal conditions, the upholstery should be used and maintained properly. In order to assure the best cleaning results, carefully follow the care instructions in this guide.

Regular cleaning

Regular vacuuming is indispensable for the maintenance of all kinds of upholstery fabrics. Vacuum cleaning prevents dust and dirt build-up to occur, and is the most effective way of maintaining the original appearance of your upholstered furniture. For an effective cleaning use the smooth suction nozzle of your vacuum cleaner and vacuum at medium power.

Machine-washing

Crevin fabrics from the Efficiency®, Two Worlds® and IN-OUT collections can be machine-washed. Before machine-washing follow the instructions in each corresponding section of this cleaning guide, and carefully check the recommend wash temperature for each fabric on the product sheet that can be downloaded from the Crevin website. Covers should be washed inside out and dried flat at environmental temperature. Use minimum centrifugation (800 rpm) and do not tumble dry. Check the product information on shrinkage; a shrinkage percentage of up to 3% in both warp and weft directions is allowed, so be aware that minor shrinkage may occur. In order to minimize shrinkage, with the cover still in its moist state, stretch in both horizontal and vertical directions.

Stain removal

Efficiency®, Two Worlds®, Naturals and IN-OUT fabrics are all treated for easy stain removal. Please consult each section for a detailed description of how to remove stains. As a general rule, when stains occur, act as quickly as possible. Treat liquid and oily stains first with absorbent paper. Most stains can be treated with soapy lukewarm water, preferably using a PH neutral detergent or handwash. Please note that we can never guarantee complete stain removal, and that some tough stains might be hard to remove. In case of doubts contact us for additional advice regarding your stain.

Dry Cleaning

Most Crevin fabrics can be dry cleaned. Please consult the product sheet of each fabric on this website. When contacting a professional cleaner, mention the fabric's name and refer to the product sheet on the Crevin website. In case of doubts, contact Crevin.

Liability

Crevin is not be held accountable for lack of regular maintenance nor improper cleaning, machine- or dry-washing, or any application of substances or elements such as anti-stain finishes, sprays, solvents or stain removers. As we are unable to establish whether our guidelines have been carried out correctly, the proper cleaning of the upholstered furniture is entirely the responsibility of the end user and is no ground for claims.



Designed for high-traffic areas with an elevated risk of soiling and staining, Efficiency® fabrics are very easy to maintain and practically all kinds of common stains can be easily removed. For easy day-to-day maintenance of your Efficiency® fabric follow the instructions below.

Stain Removal

1. Treat stains as soon as they occur.
2. Remove any excess of soiling material using absorbent paper in the case of spills and oily stains, and a knife or spatula in the case of crusted or dried-on stains.
3. Wipe the stain with a clean cloth using a solution of lukewarm water mixed with a few drops of neutral detergent or handwash.
4. With persistent stains moisten or spray the upholstery fabric directly with soapy water and then rub. Repeat the treatment if necessary.
5. When the stain has disappeared rinse with clear water to remove all soap residue, and rub dry with a clean towel.
6. Let air-dry at room temperature. Do not use hair dryers.

Note: in case water rings or water stains remain after the cleaning, clean the entire surface area of the sofa cover, from seam to seam.

Machine-washing

- Wash the sofa covers inside out and with the zipper closed.

- When the sofa cover uses Velcro instead of a zipper, attach a protective cloth or strip over the Velcro, this to avoid damage to the fabric.
- Use neutral detergents and do not use softener.
- Wash at the recommend temperature (in case of doubt, wash at 30 °C), using a washing program with delicate cycle.
- Use minimum centrifugation (800 rpm).
- Do not wash with other textiles and do not load the washing machine excessively.

Drying

- With the cover still moist stretch in both directions.
- Dry flat at environmental temperature.
- Avoid direct exposure to sunlight.
- Always assure that the cover is completely dry before usage.



Made in Barcelona