

Texturas

10th EDITION

crevin
original fabrics



¿Qué es Efficiency? *What is Efficiency?*

El arte de vivir bien

Efficiency es la marca de fácil mantenimiento de Crevin para hogares y espacios de trabajo cómodos y saludables.

Gracias a su tecnología de doble tela y materiales de primera calidad, los tejidos Efficiency garantizan una estética duradera, incluso en los entornos más dinámicos.

Los tejidos Efficiency están protegidos con el tratamiento antimicrobiano Sanitized® y respaldado por una garantía de 5 años contra el envejecimiento.

Diseñado y fabricado con cero residuos en Terrassa (Barcelona) por Crevin s.a.

The art of living well

Efficiency is Crevin's easy care brand for untroubled and healthful living and working spaces.

Thanks to their double-weave technology and high-quality materials, Efficiency fabrics guarantee long-lasting aesthetics, even in the most dynamic environments.

Efficiency fabrics are protected by the antimicrobial treatment Sanitized® and backed by a 5-year manufacturer's guarantee against aging.

Designed and crafted with zero waste in Terrassa (Barcelona) by Crevin s.a.



Fácil limpieza
Easy clean



Años garantía
Year guarantee



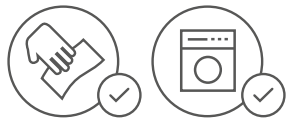
Sostenibilidad
Sustainability



Antimicrobiano
Antimicrobial

crevin
efficiency





Fácil limpieza *Easy clean*

La suciedad y las manchas se eliminan fácilmente de todos los tejidos Efficiency utilizando una simple solución de agua y jabón. La protección de Efficiency es segura y permanente.

- Fácil eliminación de manchas
- Lavable a máquina
- Protección permanente

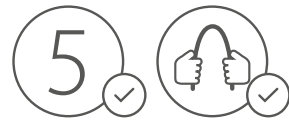
Soils and stains are easily removed from Efficiency fabrics using a simple water-soap solution. The protection of Efficiency is safe and permanent.

- *Easy stain and soil release*
- *Machine-washable*
- *Lifelong protection*



Para consultar las instrucciones de limpieza descargue nuestra guía Cuidado y Limpieza en www.crevin.com/es/descargas

For cleaning instructions download our Care & Clean guide at www.crevin.com/en/downloads



5 años de garantía *5-year guarantee*

Diseñados para resistir el impacto de los espacios interiores más activos, los tejidos Efficiency están avalados por una garantía de 5 años contra el desgaste y el envejecimiento.

- Construcción de doble tejido
- Materiales premium
- Estética duradera

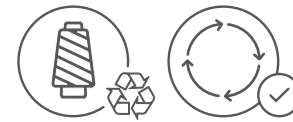
Designed to withstand the impact of the most active interior spaces, Efficiency fabrics are supported by a 5-year guarantee against wear and aging.

- *Double-weave construction*
- *Premium materials*
- *Long-lasting aesthetics*



Lea las condiciones de garantía de Efficiency en www.crevin.com/es/descargas

Read the Efficiency guarantee conditions at www.crevin.com/en/downloads



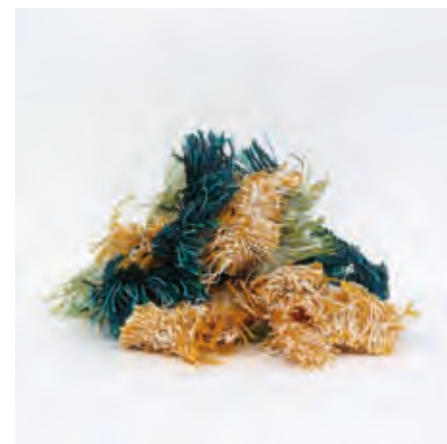
Sostenibilidad *Sustainability*

Los tejidos Efficiency combinan materiales de bajo impacto ambiental con fibra reciclada de restos de algodón, botellas PET y los propios desechos de Crevin.

- Cero residuos
- Uso de materia reciclada
- Manufactura sostenible (ISO 14001)

Efficiency fabrics combine locally sourced, low-impact materials with recycled fibre from cotton rags, pet bottles and Crevin's own yarn waste.

- *Zero-waste production*
- *Use of recycled materials*
- *Sustainably manufactured (ISO 14001)*



Para más información descargue nuestra declaración sostenibilidad en www.crevin.com/en/downloads

For more information download our sustainability statement at www.crevin.com/en/downloads



Antimicrobiano *Antimicrobial*

Los tejidos Efficiency están protegidos contra bacterias, ácaros y olores por Sanitized®, tecnología patentada suiza.

- Higiene y bienestar permanente
- Testado dermatológicamente
- Protección contra microbios

Efficiency fabrics are protected against bacteria, dust-mites and odours by the patented Swiss technology Sanitized®.

- *Permanent hygiene and wellbeing*
- *Dermatologically tested*
- *Protected against microbes*



Este artículo contiene un biocida con sustancia activa: Tetradecyldimoniumsilan (CAS: 41591-87-1).

This article contains a biocidal product with active substance: Tetradecyldimoniumsilan (CAS: 41591-87-1).



Artículo <i>Article</i>	Ancho <i>Width</i>	Peso <i>Weight</i>	Composición <i>Composition</i>	Martindales	Solidez a la luz <i>Lightfastness</i>	Pilling	Condiciones de lavado <i>Washing conditions</i>
CHIC	140	750	53%PES 34%PP 13%CO	60.000	5-6	4-5	
CREDO	140	750	55%PP 39%PES 6%CO	>100.000	6	4-5	
ITO	140	812	71%PES 20%PP 9%CO	>100.000	5-6	4-5	
LIBRA	140	616	50%PP 32%PES 18%CO	66.000	6-7	4-5	
ONIX	140	620	68%PES 24%PP 8%CO	70.000	6	4-5	
TWIN	140	795	76%PP 17%PES 7%CO	35.000	>6	4-5	
VELVETY	140	780	91%PES 9%CO	200.000	5-6	5	



Hilo reciclado
Recycled content



Cero residuos
Zero waste



Libre de biocidas y PFCs
Biocide and PFCs free

OEKO-TEX®
CONFIDENCE IN TEXTILES
STANDARD 100
20200K0217 AITEK





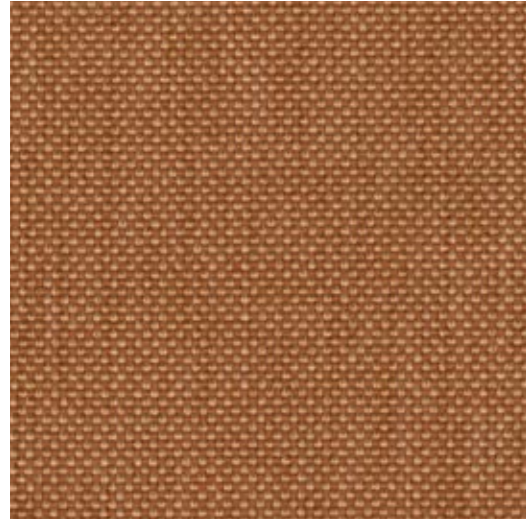
VELVETY 26



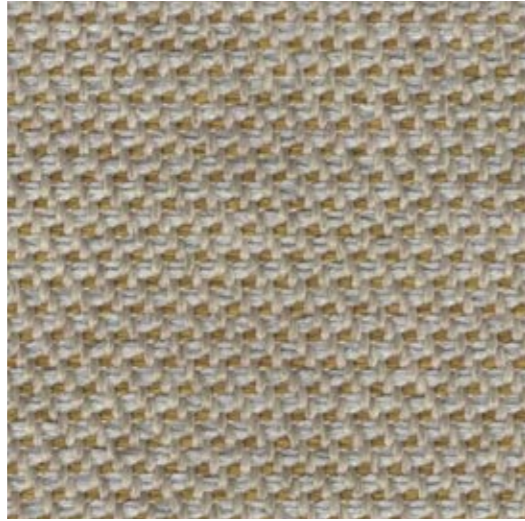
ONIX 20



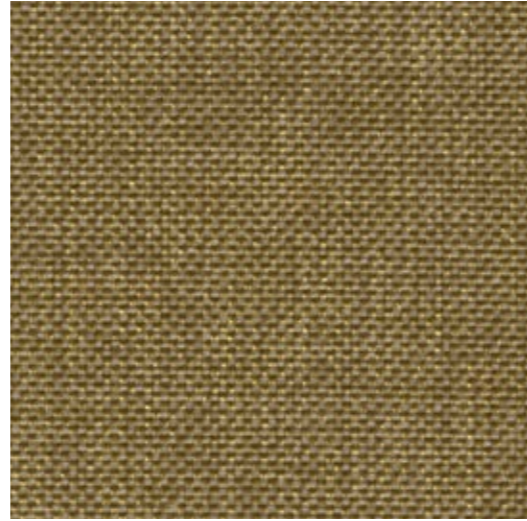
CHIC 20



LIBRA 23



CREDO 20



LIBRA 20



TWIN 20



VELVETY 20



ITO 20





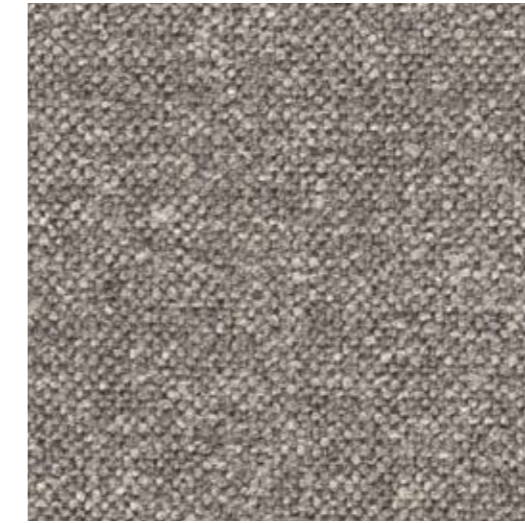
VELVETY 05



ITO 05



TWIN 05



ITO 11



VELVETY 11



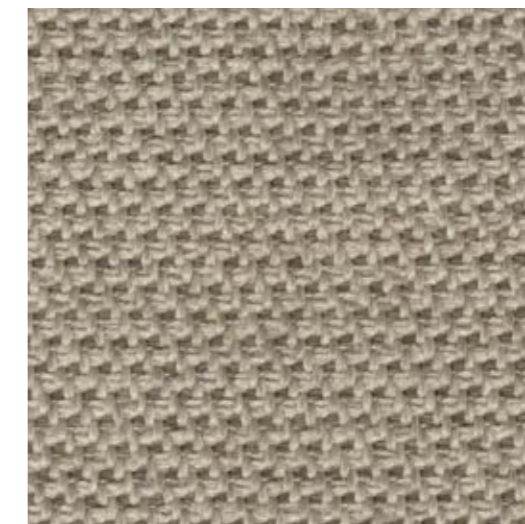
CREDO 02



LIBRA 05



CHIC 05



CREDO 05



ONIX 07



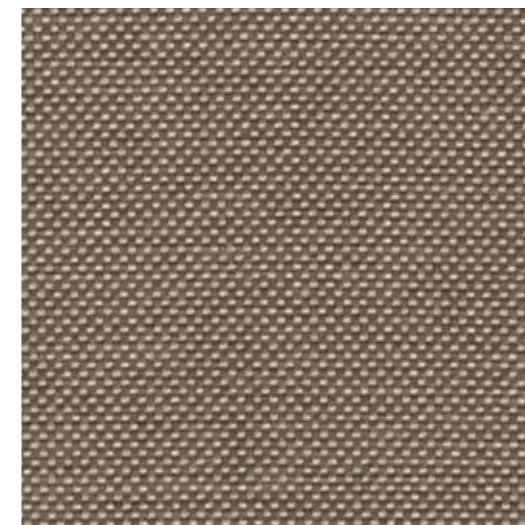
ONIX 05



TWIN 02



VELVETY 07



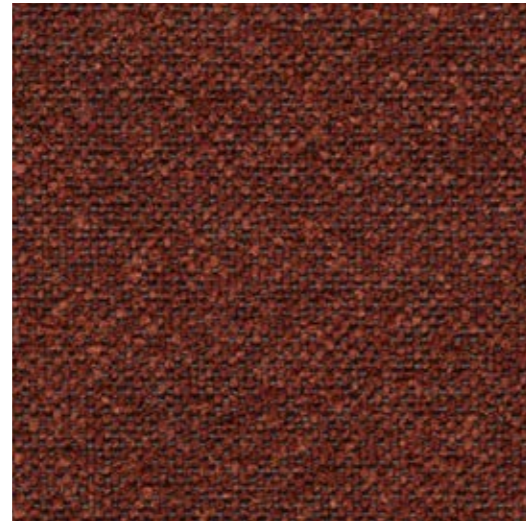
LIBRA 10



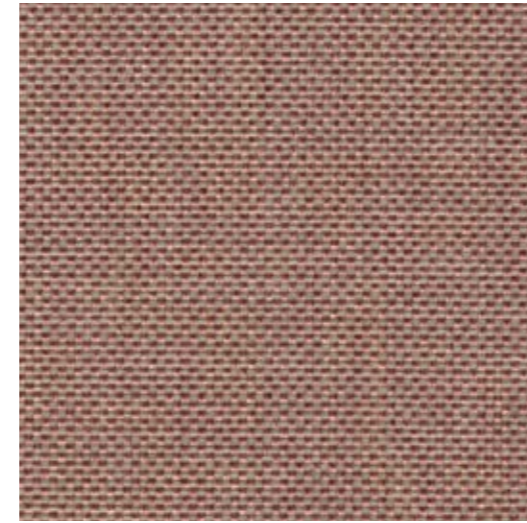
VELVETY 10



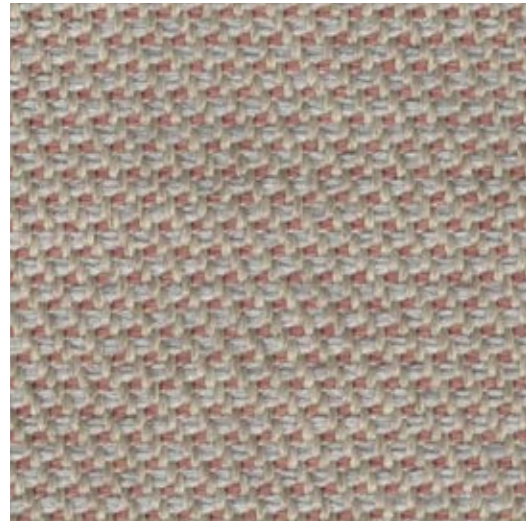
VELVETY 22



ITO 21



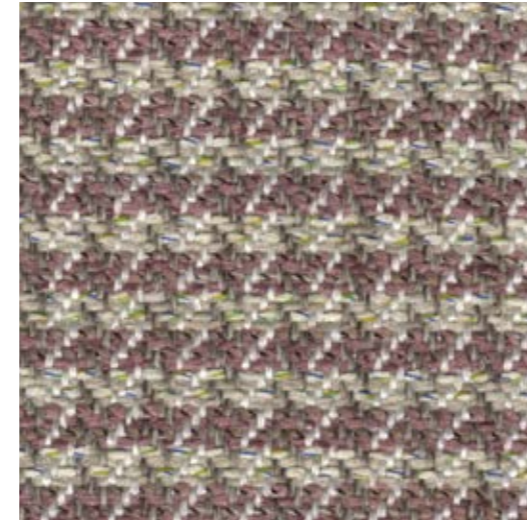
LIBRA 61



CREDO 61



TWIN 69



CHIC 66



ONIX 62



VELVETY 71



ITO 71





CREDO 18



ONIX 11



LIBRA 12



CREDO 11



LIBRA 08



ITO 18



CHIC 10



ONIX 18



VELVETY 12



TWIN 08



VELVETY 18



LIBRA 18



TWIN 11



LIBRA 53



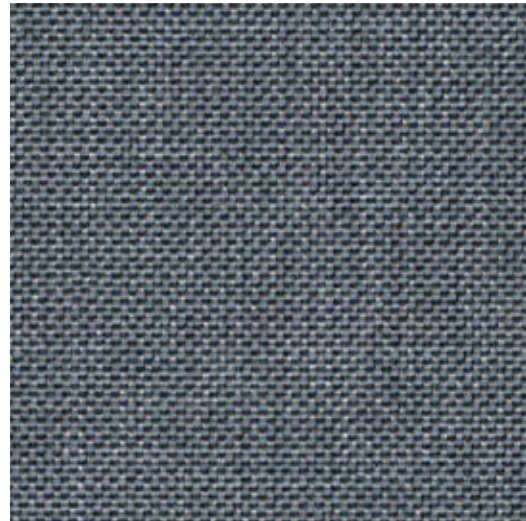
ONIX 47



CHIC 45



VELVETY 45



LIBRA 41



ITO 45



CREDO 45



TWIN 45



VELVETY 43



LIBRA 47

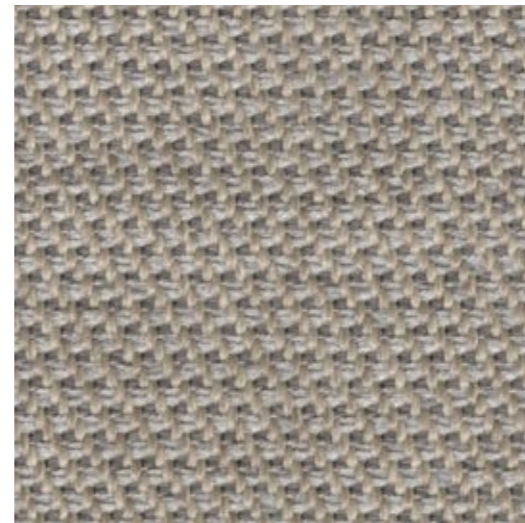




LIBRA 07



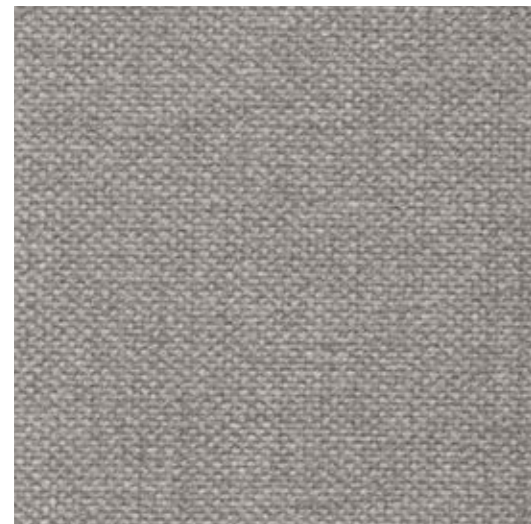
ITO 51



CREDO 51



ONIX 54



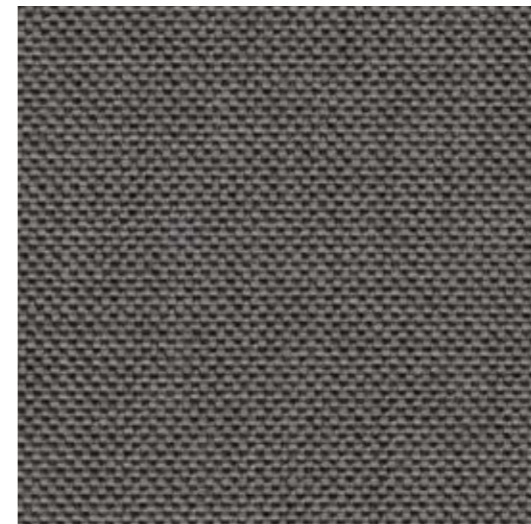
VELVETY 51



TWIN 51



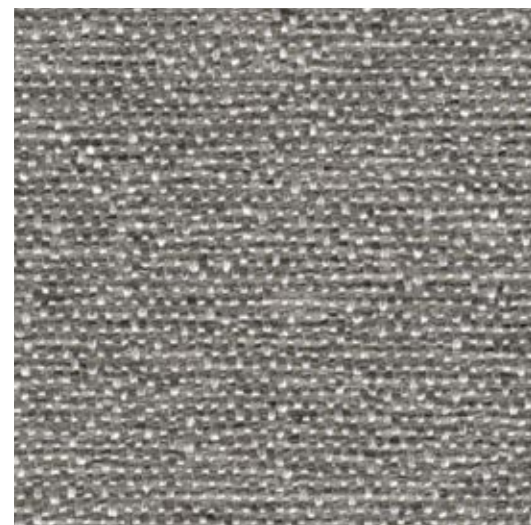
CHIC 52



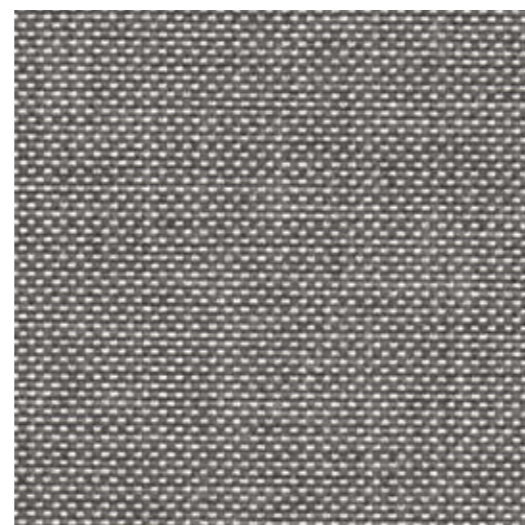
LIBRA 51



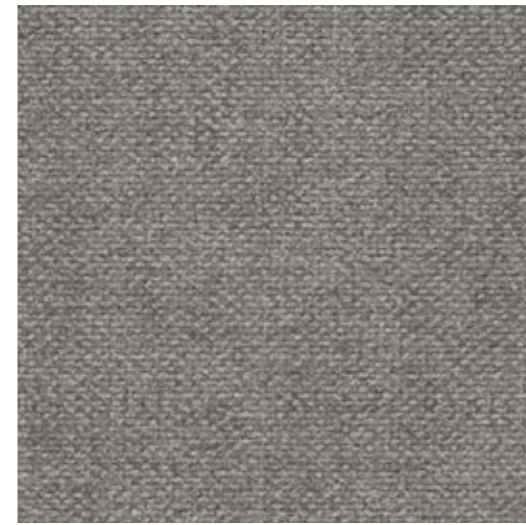
TWIN 54



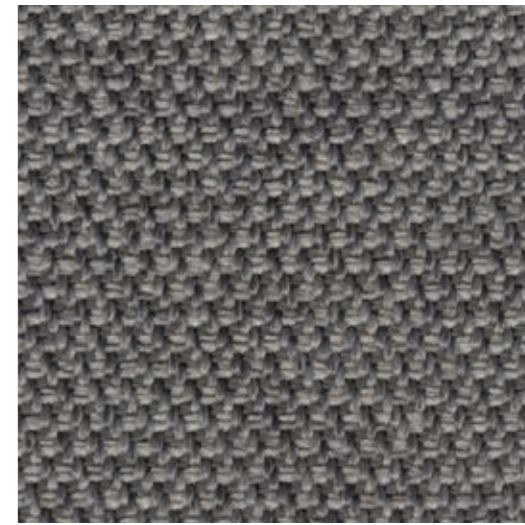
ONIX 50



LIBRA 50



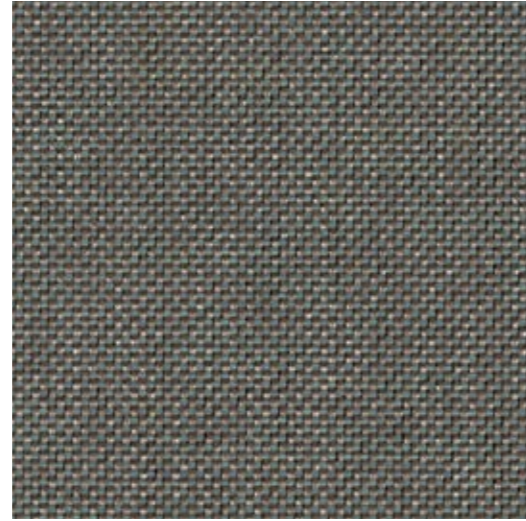
VELVETY 54



CREDO 54



ITO 38



LIBRA 40



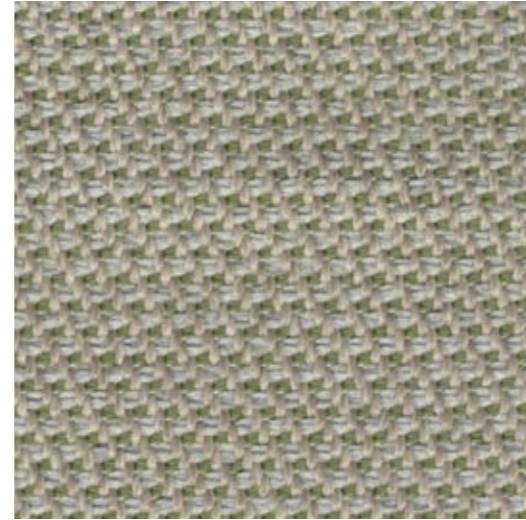
VELVETY 33



TWIN 30



ONIX 32



CREDO 39



LIBRA 30



VELVETY 32

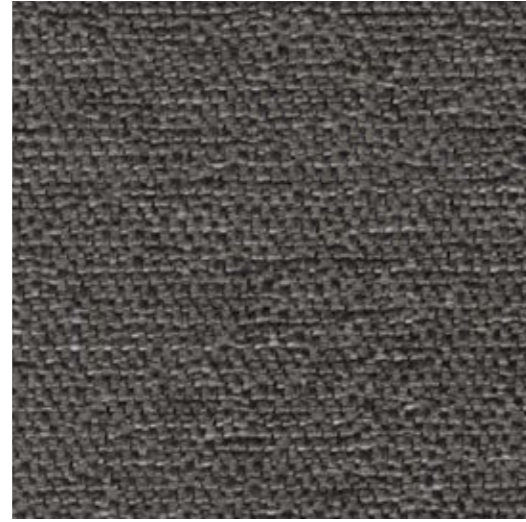


CHIC 38

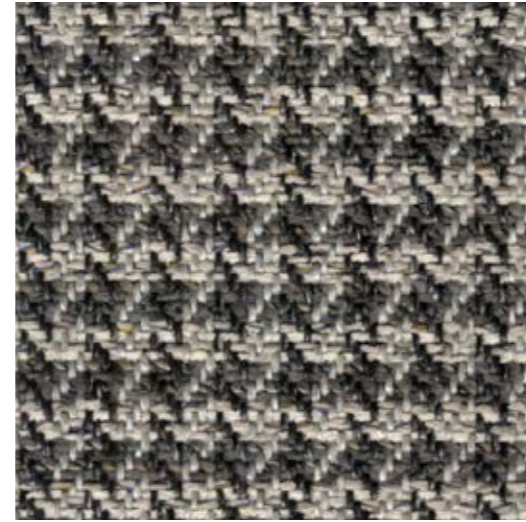




VELVETY 52



ONIX 59



CHIC 53



ITO 53



TWIN 53



CREDO 52



ITO 52



VELVETY 53



LIBRA 59



LIBRA 52



TWIN 59



CREDO 53

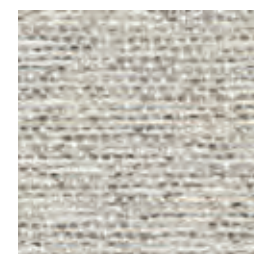


ONIX 53

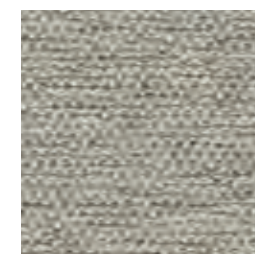
ONIX



07*



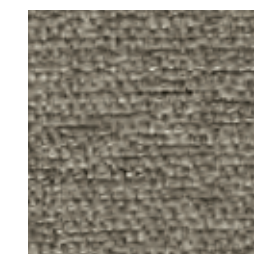
05*



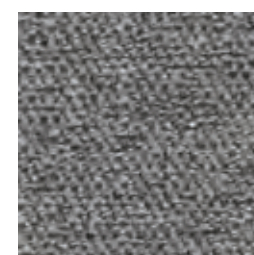
07*



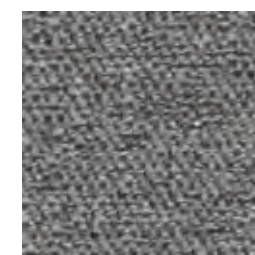
11*



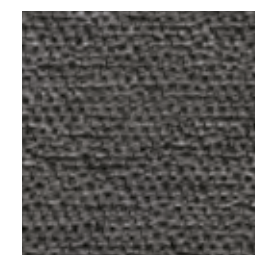
18*



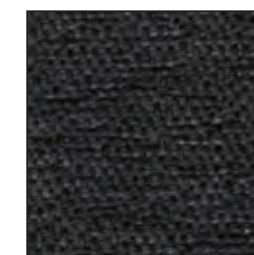
50*



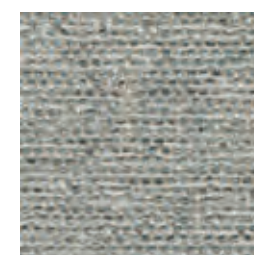
54*



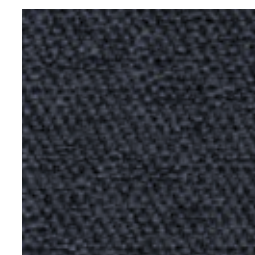
59*



53*



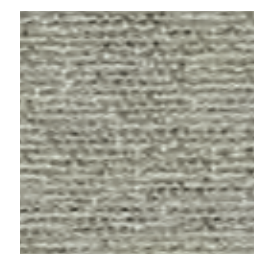
49



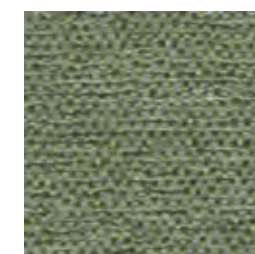
45



47



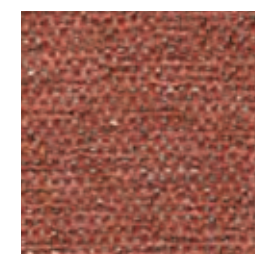
39



32



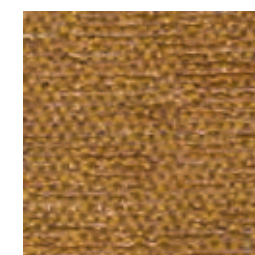
38



62



29



20

*Servicio en stock
*Stock service

ONIX

ONIX

crevin
efficiency



Composición / <i>Composition</i>		68%PES 24%PP 8%CO				
Ancho / <i>Width</i>		140				
Gramaje Lineal / <i>Linear Weight</i>		620 gr/ml ± 5%				
Resistencia al deslizamiento de las costuras (mm) <i>Seam slippage resistance (mm)</i>		<table border="1"> <tr> <th>URD / <i>WARP</i></th> <th>TRM / <i>WEFT</i></th> </tr> <tr> <td>1,5</td> <td>1</td> </tr> </table>	URD / <i>WARP</i>	TRM / <i>WEFT</i>	1,5	1
URD / <i>WARP</i>	TRM / <i>WEFT</i>					
1,5	1					
Resistencia a la abrasión <i>Abrasion resistance</i>	Rotura hilo (A) / Repelado chenilla (B) <i>End point (A) / Fully worn off (B)</i>	70.000 (A)				
	Cambio aspecto 3000c <i>Change aspect 3000c</i>	4-5				
Resistencia al pilling / <i>Pilling resistance</i>		4-5				
Reacción al fuego* <i>Assessment of ignitability*</i>	BS5852 Sche. Part 4 Source 0	PASA / PASS				
	EN 1021 Part 1	PASA / PASS				
	CAL TB 117:2013	PASA / PASS				
	NFPA 260:2013	PASA / PASS				

* Bajo solicitud / *Upon request*: BS5852 Sche. Part 4 Source 1, EN 1021 Part 2, BS7176 Low Hazard, UNI 9175 3IM

Solidez a la luz artificial / <i>Lightfastness</i>	6
--	---

Solidez al frote / <i>Colour fastness to rubbing</i>	SECO / <i>DRY</i>	HUM / <i>WET</i>
	4-5	4-5

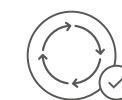
Condiciones de lavado / *Washing conditions*



Sostenibilidad / *Sustainability*



33% hilo reciclado
33% recycled content



Cero residuos
Zero waste



Libre de biocidas y PFCs
Biocide and PFCs free



Made by Crevin
www.crevin.com

VELVETY



07*



05*



07*



11*



10*



18*



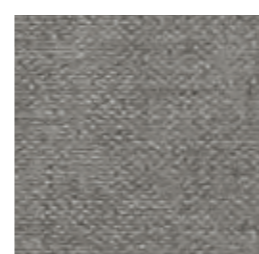
17*



12*



51*



54*



52*



53*



49*



45*



43*



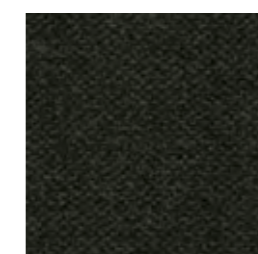
47*



33*



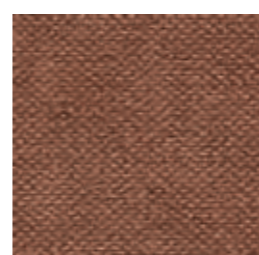
32*



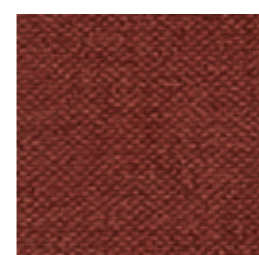
38*



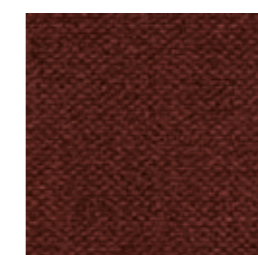
35*



71*



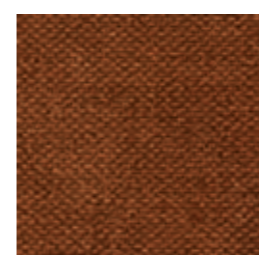
62*



22*



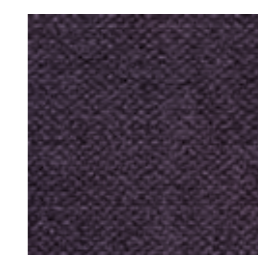
20*



26*



21*



44*



63*

*Servicio en stock
*Stock service



VELVETY

VELVETY

crevin
efficiency



Composición / Composition 91%PES 9%CO

Ancho / Width 140

Gramaje Lineal / Linear Weight 780 gr/ml ± 5%

Resistencia al deslizamiento de las costuras (mm) Seam slippage resistance (mm)	URD / WARP TRM / WEFT	
	1	1

Resistencia a la abrasión Abrasion resistance	Rotura hilo (A) / Repelado chenilla (B) End point (A) / Fully worn off (B)	200.000 (A)
	Cambio aspecto 3000c Change aspect 3000c	4-5

Resistencia al pilling / Pilling resistance 5

Reacción al fuego* Assessment of ignitability*	BS5852 Sche. Part 4 Source 0	PASA / PASS
	EN 1021 Part 1	PASA / PASS
	CAL TB 117:2013	PASA / PASS
	NFPA 260:2013	PASA / PASS

* Bajo solicitud / Upon request: BS5852 Sche. Part 4 Source 1, EN 1021 Part 2, BS7176 Low Hazard, UNI 9175 3IM

Solidez a la luz artificial / Lightfastness 5-6

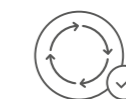
Solidez al frote / Colour fastness to rubbing	SECO / DRY HUM / WET	
	4	4

Condiciones de lavado / Washing conditions

Sostenibilidad / Sustainability



16% hilo reciclado
16% recycled content



Cero residuos
Zero waste



Libre de biocidas y PFCS
Biocide and PFCS free



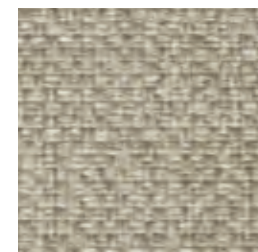
TWIN



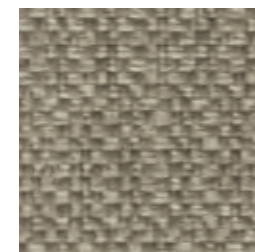
05*



02*



05*



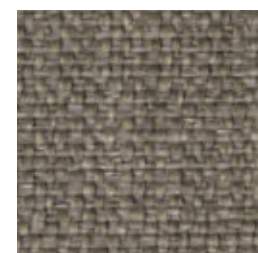
08*



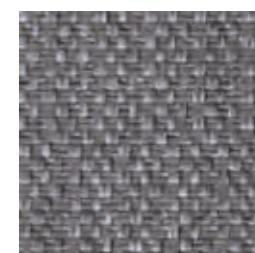
12*



51*



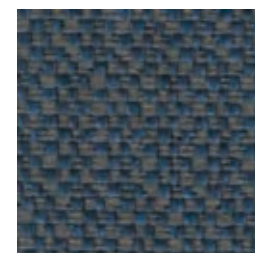
11*



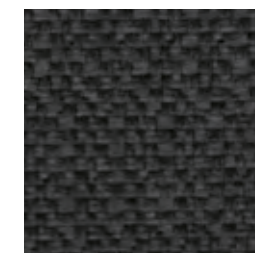
54*



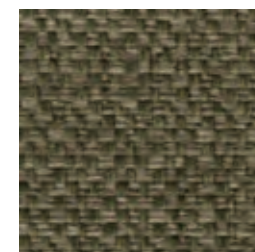
59*



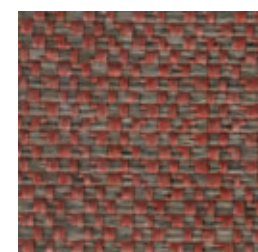
45



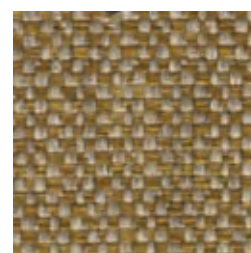
53



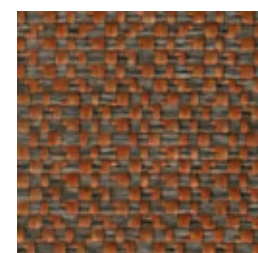
30



69



20



23

*Servicio en stock
*Stock service

TWIN

TWIN

crevin
efficiency



Composición / Composition 76%PP 17%PES 7%CO

Ancho / Width 140

Gramaje Lineal / Linear Weight 795 gr/ml ± 5%

Resistencia al deslizamiento de las costuras (mm) Seam slippage resistance (mm)	URD / WARP	TRM / WEFT
	1,9	1,7

Resistencia a la abrasión Abrasion resistance	Rotura hilo (A) / Repelado chenilla (B) End point (A) / Fully worn off (B)
	35.000 (A)

Resistencia al pilling / Pilling resistance	Cambio aspecto 3000c Change aspect 3000c
	3-4

Resistencia al pilling / Pilling resistance 4-5

Reacción al fuego* Assessment of ignitability*	BS5852 Sche. Part 4 Source 0	PASA / PASS
	EN 1021 Part 1	PASA / PASS
	CAL TB 117:2013	PASA / PASS
	NFPA 260:2013	PASA / PASS

* Bajo solicitud / Upon request: BS5852 Sche. Part 4 Source 1, EN 1021 Part 2, BS7176 Low Hazard, UNI 9175 3IM

Solidez a la luz artificial / Lightfastness >6

Solidez al frote / Colour fastness to rubbing	SECO / DRY	HUM / WET
	4-5	4-5

Condiciones de lavado / Washing conditions

Sostenibilidad / Sustainability

24% hilo reciclado
24% recycled content

Cero residuos
Zero waste

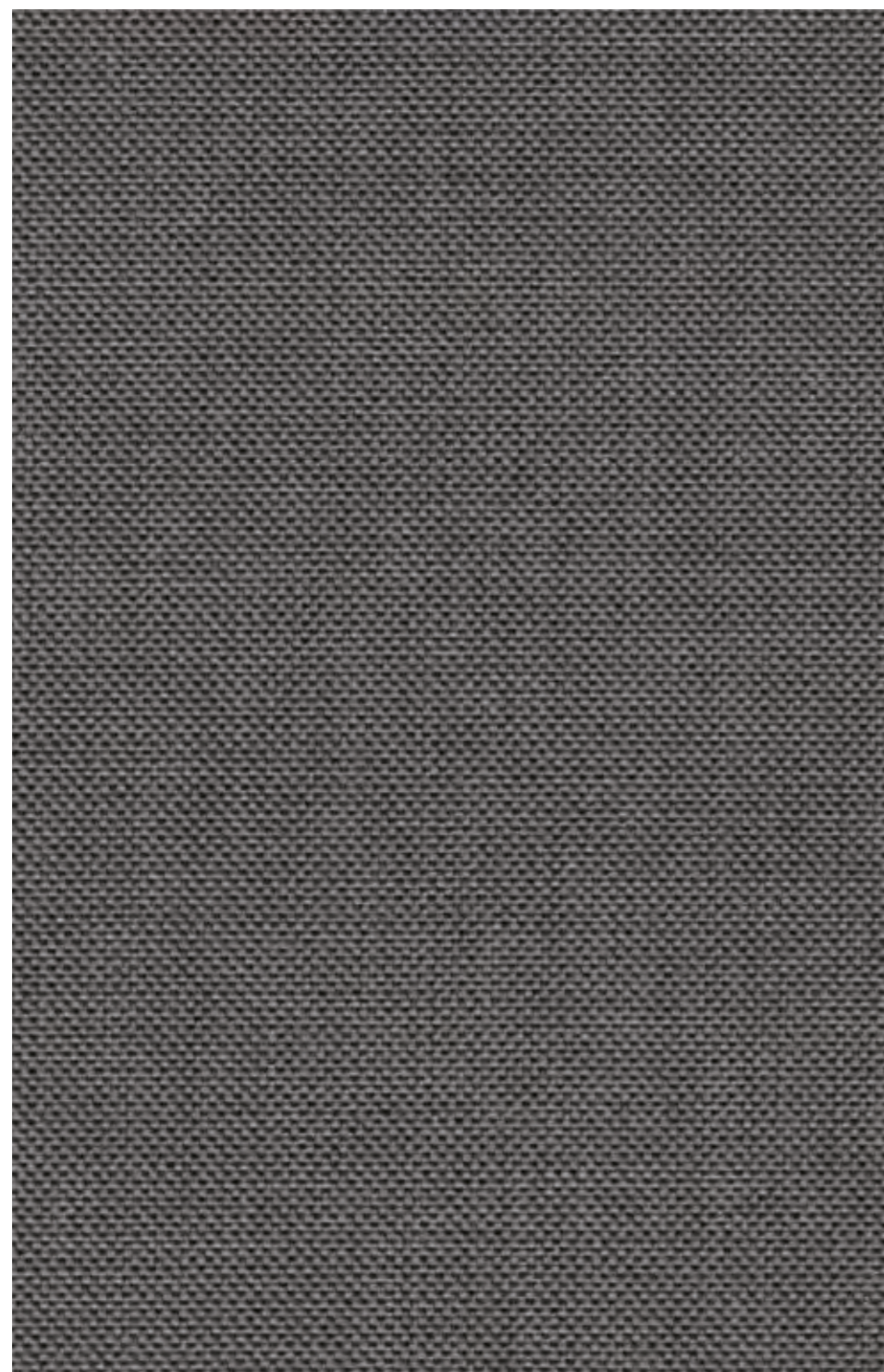
Libre de biocidas y PFCs
Biocide and PFCs free

OEKO-TEX®
CONFIDENCE IN TEXTILES
STANDARD 100
20200K0217 AITEX

REACH
COMPLIANT

MADE IN EUROPE

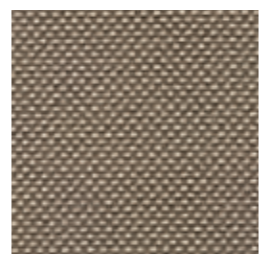
Made by Crevin
www.crevin.com



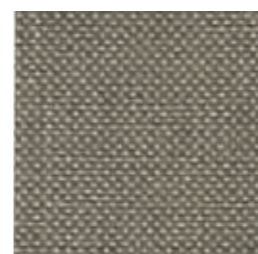
51*



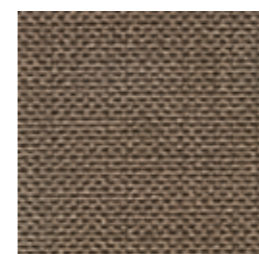
05*



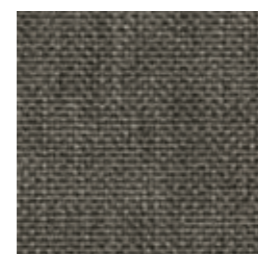
10*



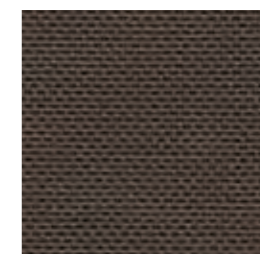
08*



11*



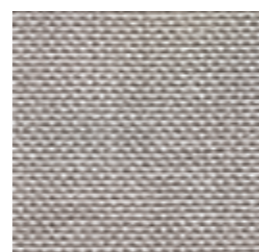
18*



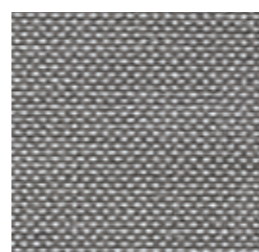
12*



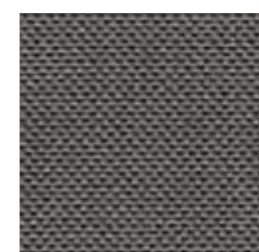
53*



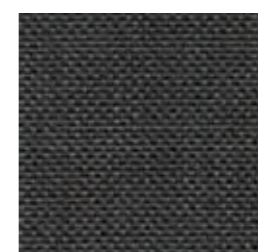
07*



50*



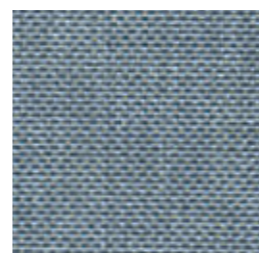
51*



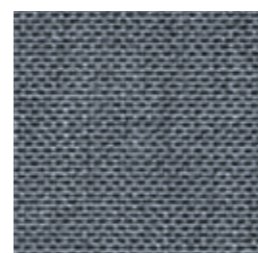
52*



59



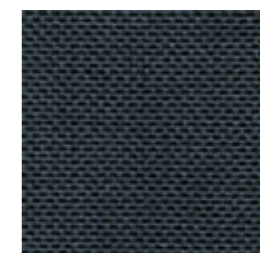
49



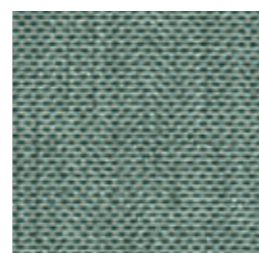
41*



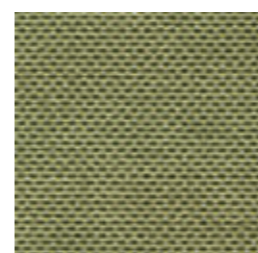
42



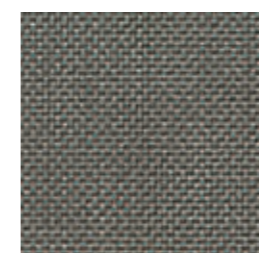
47



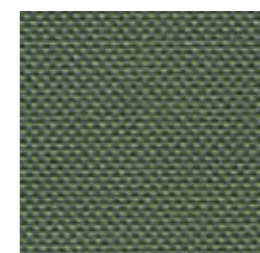
34



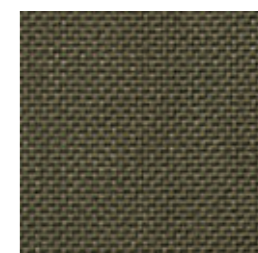
39



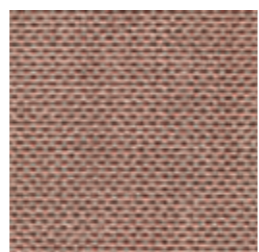
40*



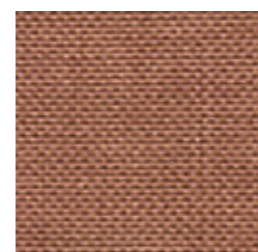
37



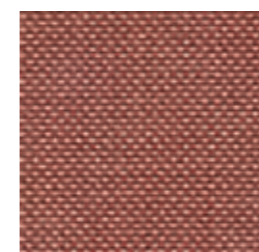
30



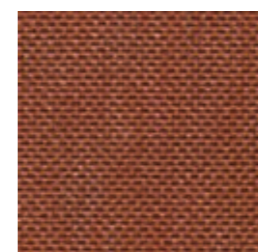
61



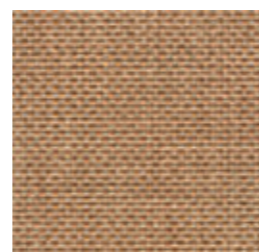
60



62



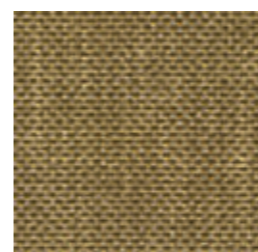
22



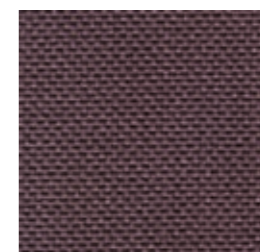
29



23



20



64

LIBRA

LIBRA

crevin
efficiency



Composición / <i>Composition</i>	50%PP 32%PES 18%CO	
Ancho / <i>Width</i>	140	
Gramaje Lineal / <i>Linear Weight</i>	616 gr/ml ± 5%	
Resistencia al deslizamiento de las costuras (mm) <i>Seam slippage resistance (mm)</i>	URD / <i>WARP</i>	TRM / <i>WEFT</i>
	1,6	1
Resistencia a la abrasión <i>Abrasion resistance</i>	Rotura hilo (A) / Repelado chenilla (B) <i>End point (A) / Fully worn off (B)</i>	66.000 (A)
	Cambio aspecto 3000c <i>Change aspect 3000c</i>	4-5
Resistencia al pilling / <i>Pilling resistance</i>	4-5	
Reacción al fuego* <i>Assessment of ignitability*</i>	BS5852 Sche. Part 4 Source 0	PASA / PASS
	EN 1021 Part 1	PASA / PASS
	CAL TB 117:2013	PASA / PASS
	NFPA 260:2013	PASA / PASS
<small>* Bajo solicitud / <i>Upon request</i>: BS5852 Sche. Part 4 Source 1, EN 1021 Part 2, BS7176 Low Hazard, UNI 9175 3IM</small>		
Solidez a la luz artificial / <i>Lightfastness</i>	6-7	
Solidez al frote / <i>Colour fastness to rubbing</i>	SECO / <i>DRY</i>	HUM / <i>WET</i>
	4-5	4-5
Condiciones de lavado / <i>Washing conditions</i>		

Sostenibilidad / *Sustainability*



50% hilo reciclado
50% recycled content



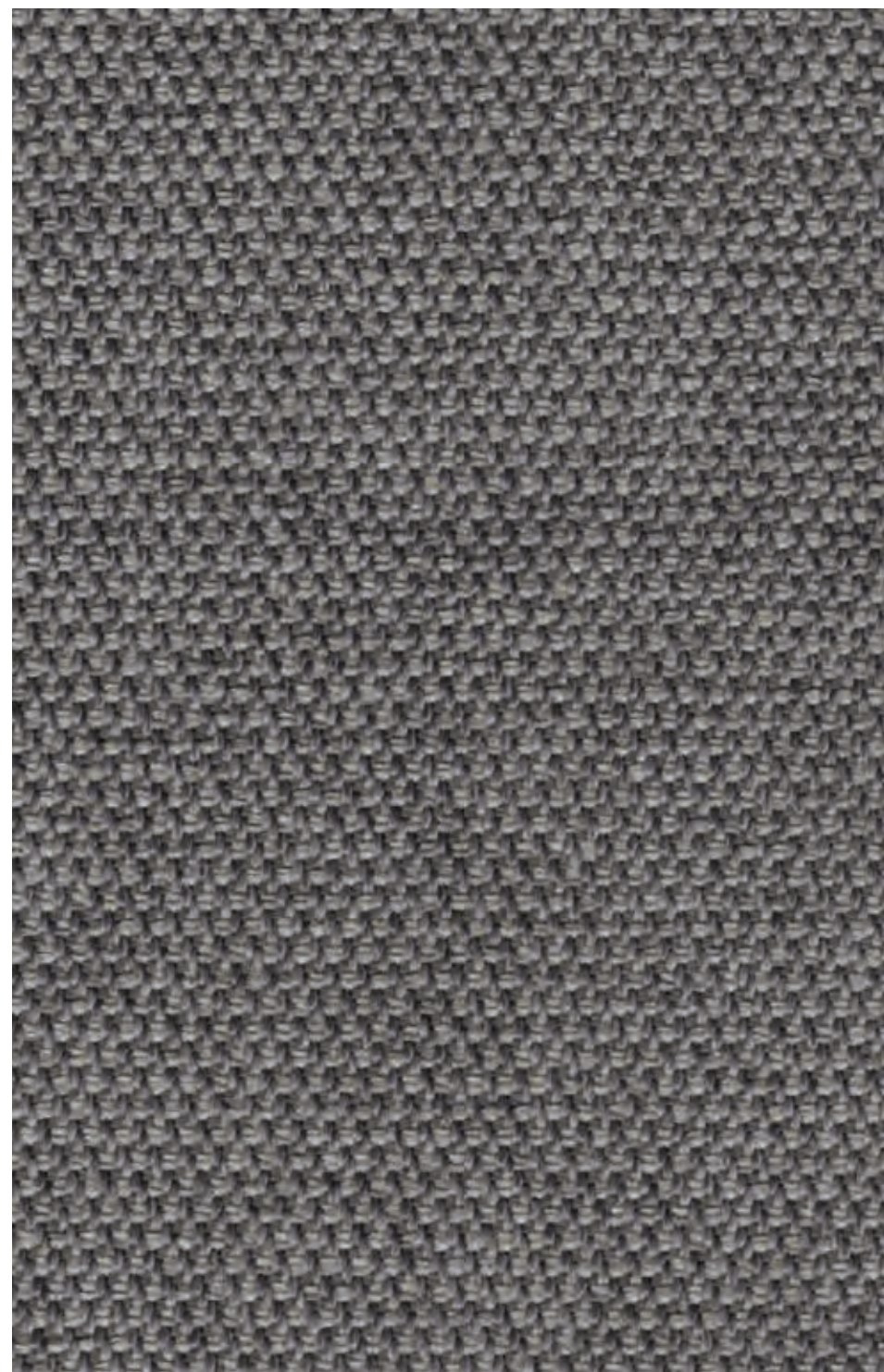
Cero residuos
Zero waste



Libre de biocidas y PFCs
Biocide and PFCs free



CREDO



54*



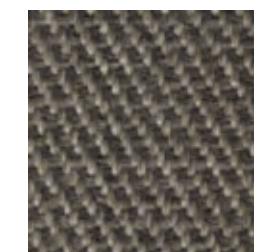
02*



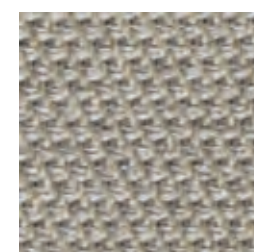
05*



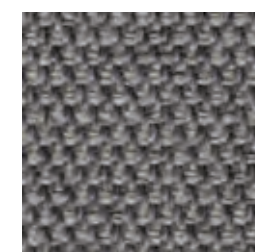
18*



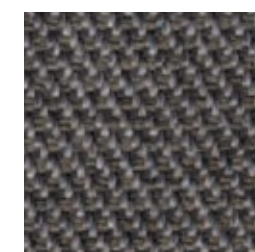
11*



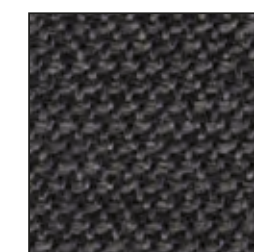
51*



54*



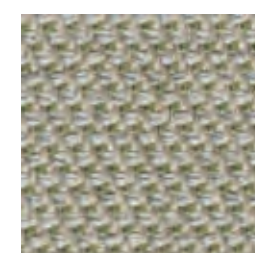
52*



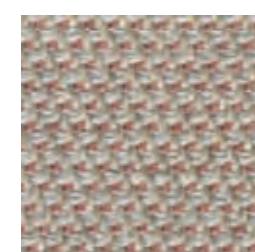
53*



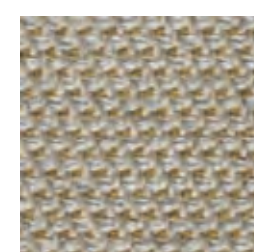
45



39



61



20

*Servicio en stock
*Stock service

CREDO

CREDO

crevin
efficiency



Composición / Composition 55%PP 39%PES 6%CO

Ancho / Width 140

Gramaje Lineal / Linear Weight 750 gr/ml ± 5%

Resistencia al deslizamiento de las costuras (mm) Seam slippage resistance (mm)	URD / WARP	TRM / WEFT
	2	1,6

Resistencia a la abrasión Abrasion resistance	Rotura hilo (A) / Repelado chenilla (B) End point (A) / Fully worn off (B)
	>100.000 (A)

Resistencia a la abrasión Abrasion resistance	Cambio aspecto 3000c Change aspect 3000c
	4-5

Resistencia al pilling / Pilling resistance 4-5

Reacción al fuego* Assessment of ignitability*	BS5852 Sche. Part 4 Source 0	PASA / PASS
	EN 1021 Part 1	PASA / PASS
	CAL TB 117:2013	PASA / PASS
	NFPA 260:2013	PASA / PASS

* Bajo solicitud / Upon request: BS5852 Sche. Part 4 Source 1, EN 1021 Part 2, BS7176 Low Hazard, UNI 9175 3IM

Solidez a la luz artificial / Lightfastness 6

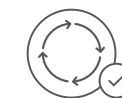
Solidez al frote / Colour fastness to rubbing	SECO / DRY	HUM / WET
	4-5	4-5

Condiciones de lavado / Washing conditions

Sostenibilidad / Sustainability



23% hilo reciclado
23% recycled content



Cero residuos
Zero waste



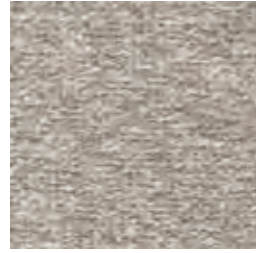
Libre de biocidas y PFCs
Biocide and PFCs free



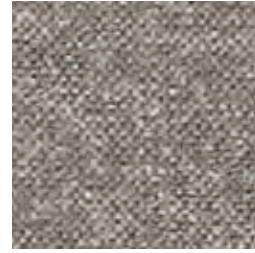
Made by Crevin
www.crevin.com



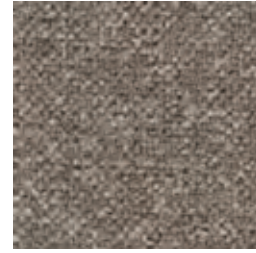
51*



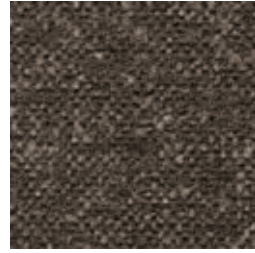
05*



11*



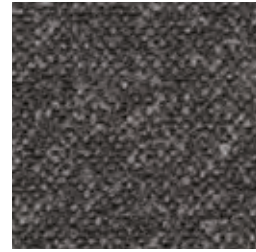
18*



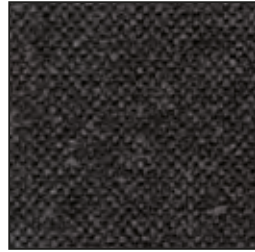
12



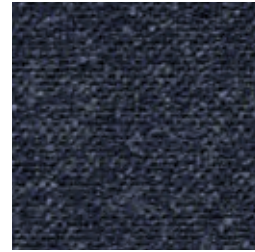
51*



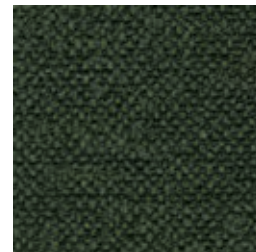
52*



53*



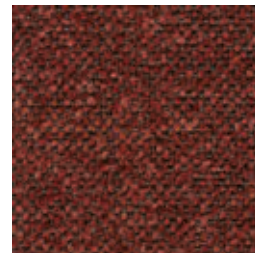
45



38



71



21



20

*Servicio en stock
*Stock service

ITO

ITO

crevin
efficiency



Composición / *Composition* 71%PES 20%PP 9%CO

Ancho / *Width* 140

Gramaje Lineal / *Linear Weight* 812 gr/ml ± 5%

Resistencia al deslizamiento de las costuras (mm) <i>Seam slippage resistance (mm)</i>	URD / <i>WARP</i>	TRM / <i>WEFT</i>
	1,8	2

Resistencia a la abrasión <i>Abrasion resistance</i>	Rotura hilo (A) / Repelado chenilla (B) <i>End point (A) / Fully worn off (B)</i>	>100.000 (A)
	Cambio aspecto 3000c <i>Change aspect 3000c</i>	4-5

Resistencia al pilling / *Pilling resistance* 4-5

Reacción al fuego* <i>Assessment of ignitability*</i>	BS5852 Sche. Part 4 Source 0	PASA / <i>PASS</i>
	EN 1021 Part 1	PASA / <i>PASS</i>
	CAL TB 117:2013	PASA / <i>PASS</i>
	NFPA 260:2013	PASA / <i>PASS</i>

* Bajo solicitud / *Upon request*: BS5852 Sche. Part 4 Source 1, EN 1021 Part 2, BS7176 Low Hazard, UNI 9175 3IM

Solidez a la luz artificial / *Lightfastness* 5-6

Solidez al frote / <i>Colour fastness to rubbing</i>	SECO / <i>DRY</i>	HUM / <i>WET</i>
	4-5	4-5

Condiciones de lavado / *Washing conditions*

Sostenibilidad / *Sustainability*



27% hilo reciclado
27% recycled content



Cero residuos
Zero waste



Libre de biocidas y PFCs
Biocide and PFCs free



Made by Crevin
www.crevin.com



Why are Crevin
fabrics durable?

crevin
original fabrics

Why are Crevin fabrics durable?

At Crevin we firmly believe that great performance starts with design and is not about applying coatings or adding chemistry. Here we would like to share the two key dimensions of our design philosophy, both crucial to understanding the durability of Crevin fabrics: weave construction and yarn type.

WEAVE CONSTRUCTION

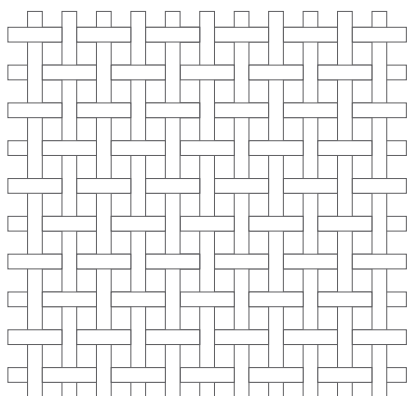
Crevin fabrics are double woven and possess a natural, built-in performance with no need for backings or coatings.

There are many methods to weave yarns into fabrics, all with different appearances, structures and effects on a fabric's durability. There is however one basic distinction to make when talking about weave construction: the difference between **single woven and double woven** fabrics.

Single woven fabrics

Single woven fabrics use a warp (vertical yarn) and weft (horizontal yarn), or sets of warps and wefts, that are interlaced at right angles to each other. For upholstery, single weaves, especially those that are loosely constructed, are often laminated with a lining fabric or coated with latex or flock backings, meant to add stability to the fabric's structure.

Since these backings and linings are simple to apply, they are a widely used constructional method. However, backings and coatings are by no means a guarantee for more durability, and from an environmental point of view, far from being considered a clean, sustainable technology.



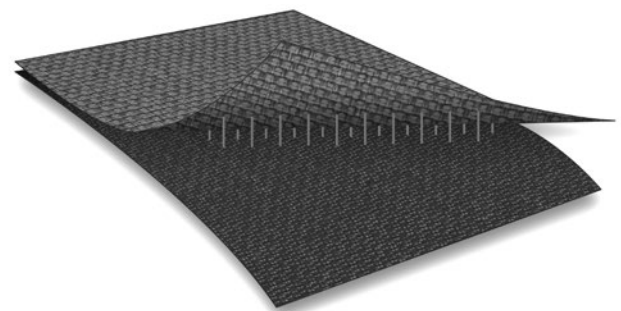
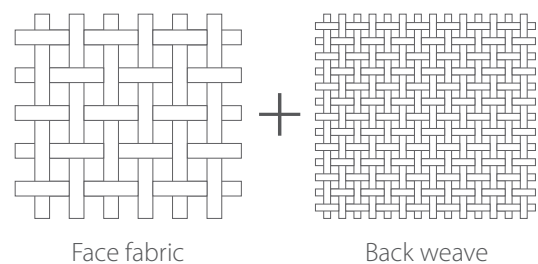
Double woven fabrics

Crevin fabrics are double-woven. Made on a special double warp loom, a double-woven fabric is a weave construction in which two warps are employed that are interconnected with one or more wefts to form a tightly woven, two-layered fabric.

In a double woven structure, the face fabric shows the colour and design, while the back-weave, often in a contrasting colour, works as a "mesh" that provides strength and stability.

A double weave construction helps to maintain the shape and fit of the upholstery, while it protects the fabric against seam slippage and offers better wrinkle and shrink resistance. For these reasons, a double woven fabric tends to be very durable.

In addition, double woven fabrics provide maximum breathability, preventing a general feel of discomfort often associated with backed or coated fabrics, like clamminess in cold or air-conditioned interiors, or a humid and stuffy feel in hot areas.



Why are Crevin fabrics durable?

YARN TYPE

Thanks to the use of locally sourced, premium yarns, Crevin fabrics have a lasting appearance and age beautifully over time.

What people often tend to forget when they purchase a sofa is that an upholstery fabric is subject to everyday wear and tear and that the quality of the fabric will highly determine what a sofa will feel and look like over time.

When an upholstery fabric is not properly designed for its intended usage, a sofa may age quickly and show wear effects like pilling, colour-loss, wrinkling, yarn breakage or soiling.

There is a direct correlation between yarn type and wear resistance. A low-cost fabric may account for a stunning short-term appearance, but the use of low-quality yarn will cause the fabric to deteriorate quickly. Yarn type, as well as fibre content, is also a major contributor to ease of maintenance, washability and colour retention.

In close liaison with local suppliers, our in-house design team participates actively in the development of the yarns used for Crevin fabrics, giving close consideration to how a design will interact with its intended environment (high- traffic, functional, decorative, commercial, outdoor,

etc.), while following the latest trends in material, colour and texture.

Due to the creative, often intuitive process of blending fibres, filaments and colours, Crevin fabrics offer something different from the mainstream, while demonstrating time and again that aesthetics and performance go perfectly hand in hand and true character particularly shows with age.





Why are Crevin
fabrics sustainable?

crevin
original fabrics

Why are Crevin fabrics sustainable?

Produce better, consume less, recycle more

In the light of growing mass production and consumption, sustainability is the term often adopted to indicate that textiles come from responsible suppliers. But the term is equally used as a simple marketing tool. That's why we would like to give insight into why Crevin fabrics are sustainable.

Keeping our business local

In the first decade of the new millennium, facing a rapidly globalizing economy, the textile industry shifted almost exclusively to low-cost economies. At the same time, Crevin kept their manufacturing local. In retrospect, a natural choice. Not just because we wanted to be in control of our production and work with our people, but because we wanted to make fabrics that had a story to tell.

Keeping our business human

While operating from a state-of-the-art mill, the 150-year old textile legacy of our hometown Terrassa is inextricably tied to our brand value and proposition, while the knowhow of three generations of local weavers remain our main source of inspiration.

Keeping our business purposeful

Today, respect for heritage, local materials and knowhow, is synonymous with the concept of sustainability. More

than making a positive impact on the environment, sustainability has evolved into a new approach to manufacturing. A sustainably made product is about the hand that made it, not the machine. It's about dedication and relating to what you do.

Keeping our business environmentally-friendly

Due to mass-production, the textile business has become one of the world's most polluting industries. Since 2010, our manufacturing is certified under ISO 14001, the environmental management system that compiles written principles to maximize resource efficiency and pollution control. Since 2014, we are a zero-waste company.

In sum: why are Crevin fabrics sustainable?

As fabric makers, we think of sustainability as a natural way of doing things. We commit to creating a design product that is timeless, long-lasting and delivered by expertise, the best materials and a creative and inclusive workplace, while we use natural resources responsibly and sensibly. This is the way we are and what moves us forward.

Download our sustainability statement [here](#).





**Sustainability
statement**

crevin
original fabrics

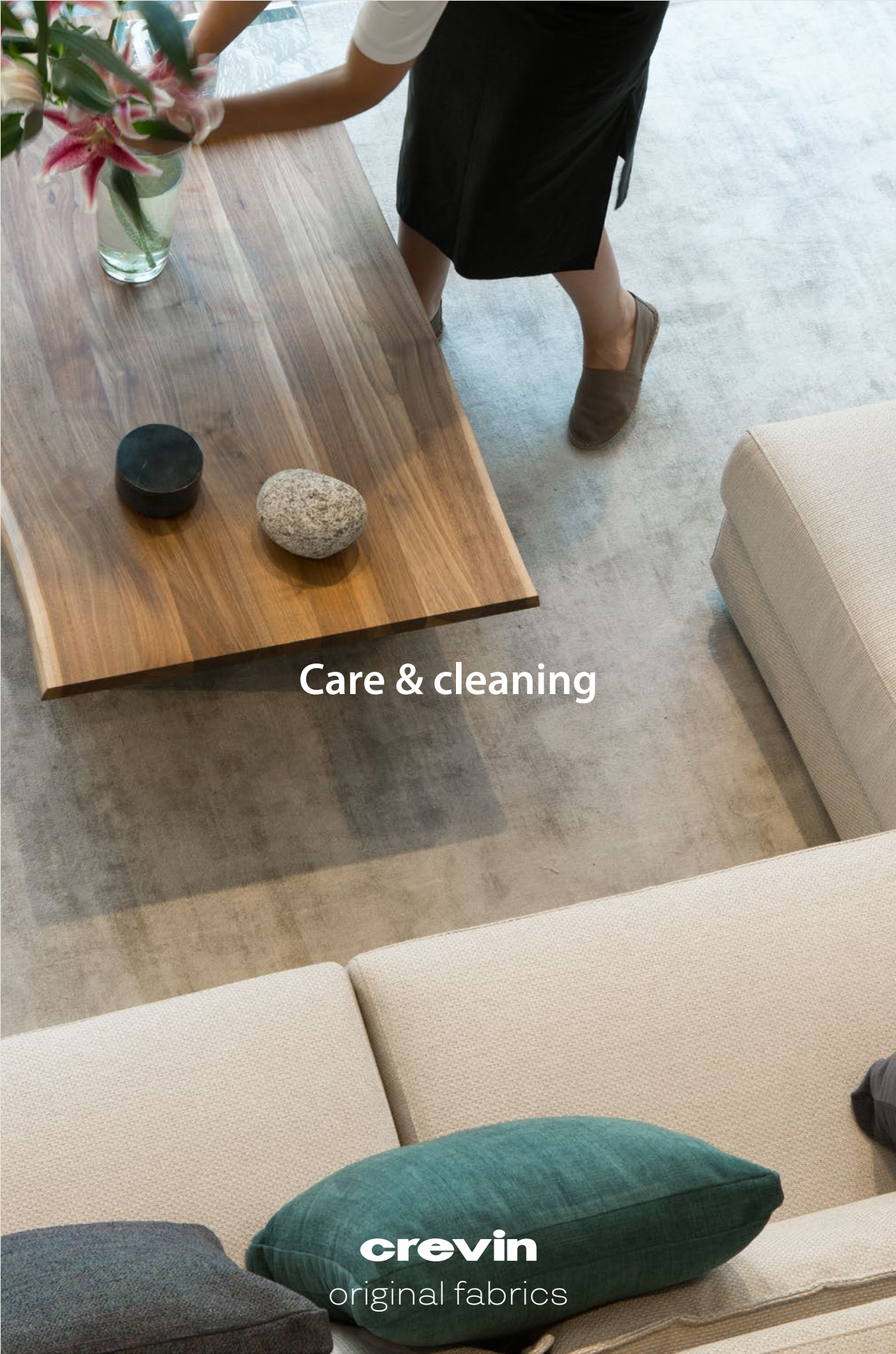
Sustainability statement

Crevin is committed to maintaining a sustainable and environmental-friendly business. The following key principles form part of our corporate identity and work routine.

1. Crevin fabrics are designed and manufactured with superior expertise and the highest of quality materials to ensure their longevity and sustainability.
2. Crevin fabrics possess a long and functional life and do not need to be replaced periodically.
3. The textile heritage and know-how of our local community form the basis for Crevin's design and manufacturing.
4. Crevin ensures that their fabrics are made in a way that the safety of persons and the environment is never put at risk.
5. Crevin is a 100% vertical mill that manufactures their entire product range on site, enabling an exhaustive and constant quality control over all production stages.
6. Crevin fabrics are created in accordance with the highest European product standards and are tested at accredited, independent laboratories.
7. Crevin uses raw materials from suppliers that at any time can provide safety information on chemical substances used, in compliance with REACH, the European regulation on the Registration, Evaluation and Authorization of Chemicals (EC 1907/2006).
8. Crevin's manufacturing process is carried out with the most optimal alignment of production phases from which inefficiencies are eliminated, accounting for less energy consumption, less waste and minimized CO2 emissions.
9. Crevin uses fibers and dyeing processes with the most efficient use of dye stuff and a quick and effective drying, saving in water and gas use.
10. Waste water from Crevin's finishing plant is purified before its disposal.

11. Crevin recycles 100% of their yarn remnants in post-industrial content.
12. Crevin successfully manages an in-house recycling program aimed at the recycling of yarn waste into new yarn in a closed loop process.
13. Crevin re-uses yarn cones and packaging materials internally until their final disposal for reprocessing.
14. Crevin's staff actively participates in electricity-saving programs and the recycling of waste materials like plastics, carton and paper, batteries, plastic water bottles, taps and cups. Specialized companies are contracted for their periodical pick-up and posterior reprocessing.
15. Crevin engages in the constant assessment of waste and excess materials and the identification of new paths for their recycling.
16. In their marketing activities Crevin aim at fostering understanding of a sustainable and environmentally responsible business.
17. Crevin's commitment to manufacturing a high quality product with the least possible impact on the environment has been documented in their ISO 9001 and ISO 14001 certifications.
18. Upon request Crevin shall provide more factual information to their customers concerning the above mentioned strategies and routines.





Care & cleaning

crevin
original fabrics



Designed for high-traffic areas with an elevated risk of soiling and staining, Efficiency® fabrics are very easy to maintain and practically all kinds of common stains can be easily removed. For easy day-to-day maintenance of your Efficiency® fabric follow the instructions below.

Stain Removal

1. Treat stains as soon as they occur.
2. Remove any excess of soiling material using absorbent paper in the case of spills and oily stains, and a knife or spatula in the case of crusted or dried-on stains.
3. Wipe the stain with a clean cloth using a solution of lukewarm water mixed with a few drops of neutral detergent or handwash.
4. With persistent stains moisten or spray the upholstery fabric directly with soapy water and then rub. Repeat the treatment if necessary.
5. When the stain has disappeared rinse with clear water to remove all soap residue, and rub dry with a clean towel.
6. Let air-dry at room temperature. Do not use hair dryers.

Note: in case water rings or water stains remain after the cleaning, clean the entire surface area of the sofa cover, from seam to seam.

Machine-washing

- Wash the sofa covers inside out and with the zipper closed.

- When the sofa cover uses Velcro instead of a zipper, attach a protective cloth or strip over the Velcro, this to avoid damage to the fabric.
- Use neutral detergents and do not use softener.
- Wash at the recommend temperature (in case of doubt, wash at 30 °C), using a washing program with delicate cycle.
- Use minimum centrifugation (800 rpm).
- Do not wash with other textiles and do not load the washing machine excessively.

Drying

- With the cover still moist stretch in both directions.
- Dry flat at environmental temperature.
- Avoid direct exposure to sunlight.
- Always assure that the cover is completely dry before usage.





Acerca / About

+ de 40 años
tejiendo valor

Como fabricantes de tejidos de tercera generación de Terrassa (Barcelona), nos sentimos privilegiados de formar parte de un legado de 150 años de fabricación textil local. Somos una empresa verticalmente integrada, lo que nos permite mantener un control total sobre el desarrollo de nuestros productos, pasando por el tejido, la tintura y el acabado. Fabricamos bajo las normas ISO 9001 e ISO 14001 y exportamos a más de 60 países en todo el mundo.

+ 40 years
adding value

We are a third generation weaving mill from Terrassa (Barcelona), where we have the privilege to form part of a 150 year old legacy of local textile manufacturing. As a vertically integrated company we maintain full control over the development, weaving, finishing and dyeing of our fabrics. We manufacture under ISO 9001 and ISO 14001 and export our fabrics to over 60 countries worldwide.

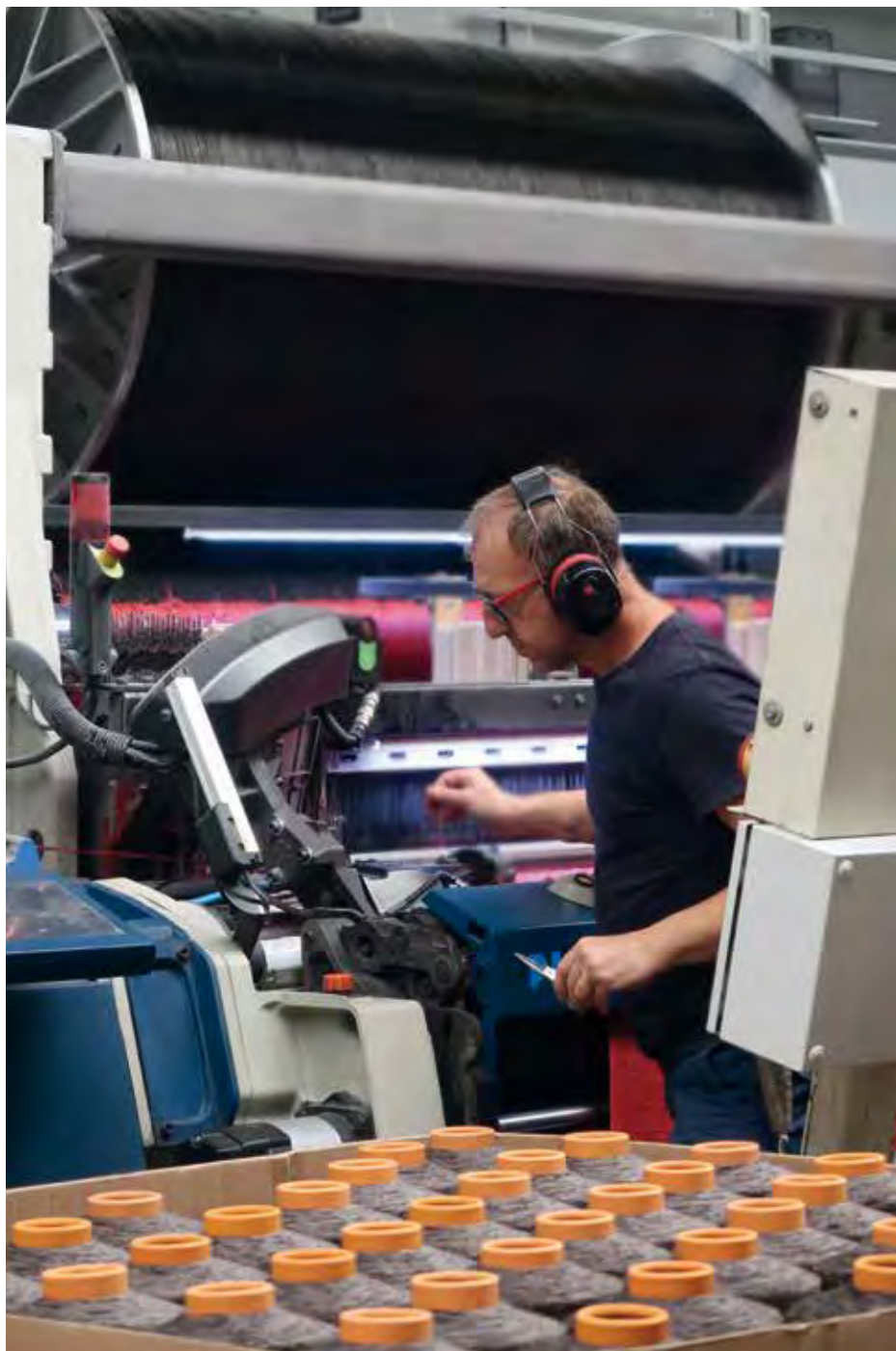


Diseño de altas prestaciones

Estrechamente conectados con la cultura del diseño de Barcelona, los tejidos de Crevin unen las más altas prestaciones técnicas con una refinada estética Mediterránea. La calidad de nuestros tejidos se debe al uso exclusivo de materiales premium, la construcción a partir de una estructura de doble tela, así como una forma específica y única de mezclar hilos, texturas y colores.

Performance by design

Closely connected with the creative community of Barcelona, Crevin fabrics unite the highest quality standards with a refined, Mediterranean aesthetic. Our fabrics are defined by premium materials and double-woven structures, as well as a specific art of blending fibre, colour and texture in beautiful and captivating design.



Creatividad con ADN industrial *Creativity with industrial DNA*

Nuestra experiencia y conocimiento industrial son fundamentales en nuestro proceso creativo. Estamos constantemente explorando nuevas ideas, materiales y técnicas, y es el dominio del proceso de tejeduría y acabado lo que nos permite transformar nuestro know-how en productos de un alto valor añadido.

Our industrial hardware and expertise are fundamental to our design. We constantly explore new ideas, materials and techniques and apply that knowledge to our craft. By mastering the process of weaving and finishing we are able to translate our knowhow into high-quality products, ready to stand the test of time.

Sostenibilidad en armonía

Como diseñadores y fabricantes nos comprometemos a crear un producto atemporal y duradero. Somos una empresa zero-waste, lo que significa que reprocesamos y reciclamos todos nuestros residuos. Inspirados por la economía circular, hemos logrado transformar los restos de nuestra fabricación en hilaturas que se reutilizan para nuevos tejidos. Nuestro proceso productivo está certificado bajo ISO 14001, sistema de gestión medioambiental, y nuestros tejidos ofrecen el más alto nivel de seguridad de producto, certificado por OEKOTEX.

Sustainability in harmony

As fabric makers, we commit to creating a design product that is timeless and long-lasting. We are a zero-waste mill, meaning that all our residues are reprocessed or recycled into post-industrial content. Inspired by the circular economy we turn our weave leftovers into yarn that is reused for new fabric. Under the environmental standard ISO 14001 we commit to manufacturing responsibly and efficiently, while our fabrics offer the highest level of product safety, as certified by OEKOTEX.





Fácil limpieza
Easy clean



Años garantía
Year guarantee



Sostenibilidad
Sustainability



Antimicrobiano
Antimicrobial

spencer
interiors

www.spencerinteriors.com

Made by Crevin

www.crevin.com