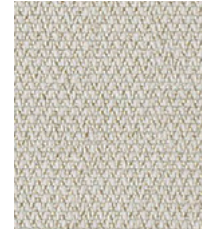


Era

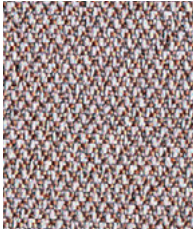
camira



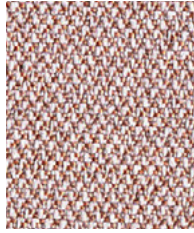
Calendar
CSE19



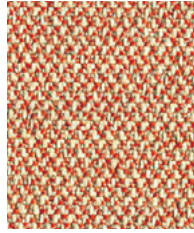
Futurist
CSE01



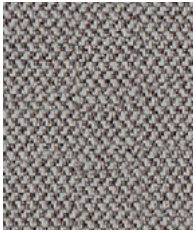
Occurrence
CSE2



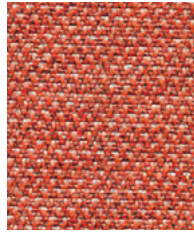
Date
CSE24



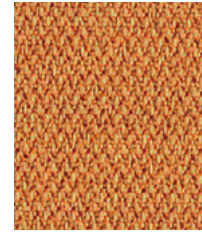
Sequence
CSE25



Generation
CSE02



Turn
CSE26



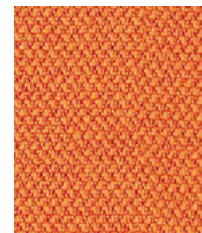
Measure
CSE27



Phase
CSE17



Cycle
CSE06



Span
CSE05



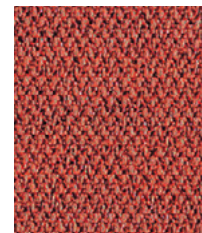
History
CSE21



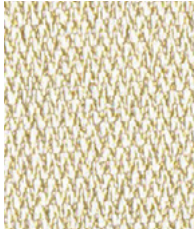
Prime
CSE09



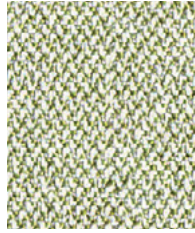
Extent
CSE28



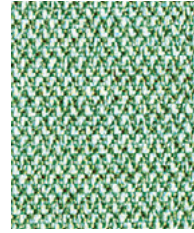
Experience
CSE29



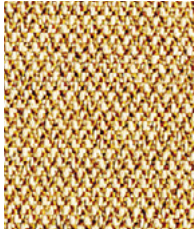
Transition
CSE30



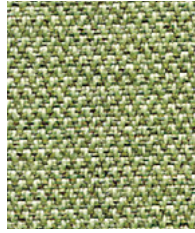
Analogue
CSE33



Notation
CSE36



Splitsecond
CSE31



Endurance
CSE34



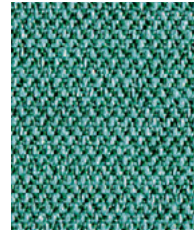
Aeon
CSE20



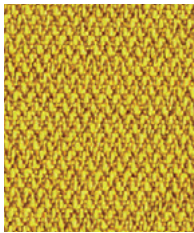
Lifetime
CSE03



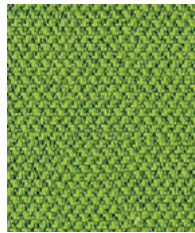
Period
CSE07



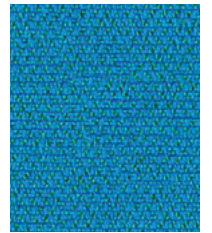
Rest
CSE37



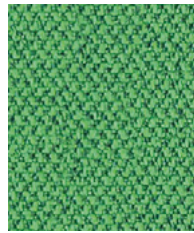
Occasion
CSE32



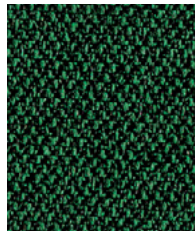
Timelapse
CSE16



Everlasting
CSE10



Event
CSE18

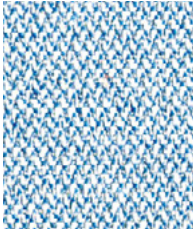


Signature
CSE35

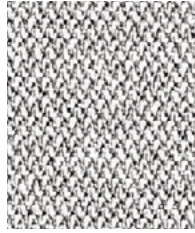


Stage
CSE15

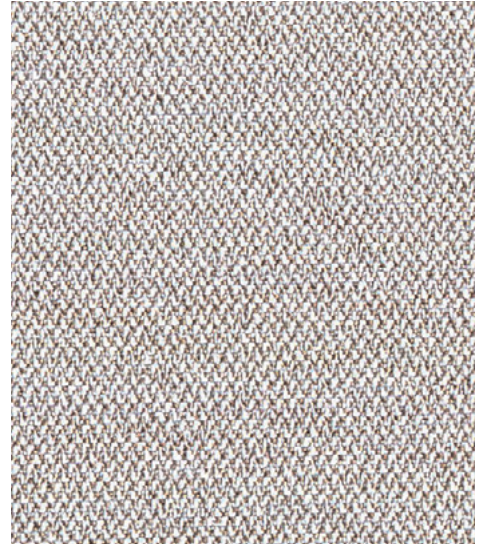
Photographic fabric scans are not color accurate. Always request actual fabric samples before ordering.



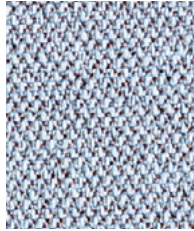
Allowance
CSE38



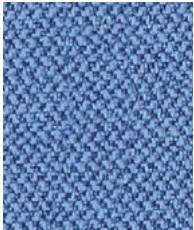
Memo
CSE46



Quota
CSE41



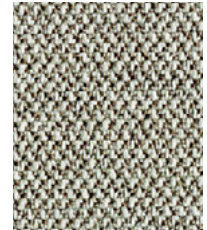
Youth
CSE39



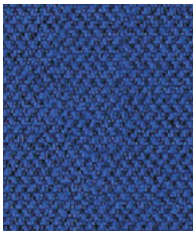
Chapter
CSE08



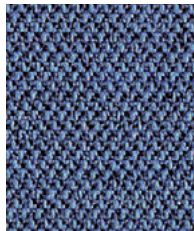
Forecast
CSE11



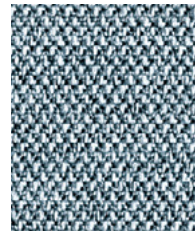
Prompt
CSE45



Perennial
CSE12



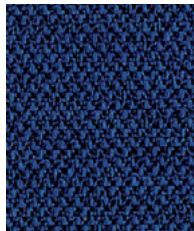
Range
CSE42



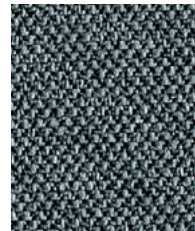
Late
CSE43



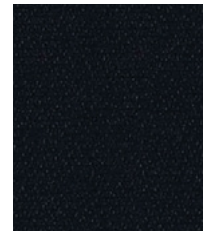
Present
CSE13



Maturity
CSE40



Elapse
CSE44



Forward
CSE14



Task seating



Lounge seating



Panels



Year guarantee

Era is a subtle, two tone polyester fabric containing stretch in both directions for ease of upholstery. The baby herringbone weave offers an understated contemporary texture while its coloring technique provides close up intrigue. The palette incorporates playful brights and sophisticated muted tones.



Era meets the ACT voluntary Performance Guidelines and is classified for Heavy Duty Upholstery. Era is a UL Recognized Component.

Technical information

EN

Composition

100% Polyester. Non metallic dyestuffs.

Environment

Certified to OEKO-TEX® Standard 100

Width

54 inches minimum

Weight

9^{1/2} oz/sq yd ±5% (14^{1/4} oz/running yd ±5%)

Abrasion Resistance*

ASTM D4157 Wyzenbeek method, Heavy Duty Upholstery Independently certified to ≥100,000 double rubs Covered by a full and comprehensive 10 year guarantee (full details available)

Flammability

California Technical Bulletin 117 - 2013
NFPA 260 + UFAC Class 1
BS 7176 Low Hazard
ASTM E84 Class 1 or A (Adhered)
ASTM E84 Class 1 or A (Un-adhered)
UL 723

Note: Flammability performance is dependent on components used. Our certificates show what substrates have been used in our tests. For composite tests customers must ensure their complete furniture meets the necessary standards.

Color Fastness to Light

AATCC-16 (40 hours) Class 4

Color Fastness to Crocking

AATCC-8 (Dry: 4, Wet: 3)

Cleaning

W/S

Clean with a water-based cleaning agent or solvent: Depending on the stain, you can use a dry-cleaning solvent, the foam of a mild detergent, or upholstery shampoo.

*Camira recognizes that the number of Wyzenbeek double rubs do not reflect the actual wear performance of fabrics. We're so confident in the durability of our products that we provide a robust 10 year guarantee (full details available). This product is externally certified, details of which are on our website and available from our customer services team.

Multiple factors affect fabric durability and appearance retention, including end-user application and correct maintenance. Results above 100,000 double rubs have not been shown to be a reliable indicator of increased fabric lifespan.

Batch to batch variations in shade may occur within commercial tolerances. We reserve the right to alter technical specifications without notice. The Unregistered Design Rights and the Copyright in all designs are the exclusive property of Camira Fabrics Limited.

F

Composition

100% Polyester. Teintures non métalliques.

Écologique

Certifié à OEKO-TEX® Standard 100

Largeur

54 pouces minimum

Poids

9^{1/2} oz/sq yd ±5% (14^{1/4} oz/lin.yd ±5%)

Résistance à l'abrasion*

ASTM D4157 Wyzenbeek method, Heavy Duty Upholstery Certificat indépendant ≥100,000 double frottement Avec une garantie totale de durabilité de 10 ans (renseignements complémentaires disponibles)

Flammabilité

California Technical Bulletin 117 - 2013
NFPA 260 + UFAC Class 1
BS 7176 Low Hazard
ASTM E84 Class 1 or A (Adhered)
ASTM E84 Class 1 or A (Un-adhered)
UL 723

Notez: La performance de flammabilité dépend des composantes utilisées. Nos certificats indiquent les substrats utilisés dans nos tests. Pour les tests composites, les clients doivent s'assurer que leurs meubles complets satisfont aux normes nécessaires.

Solidité à la Lumière

AATCC-16 (40 heures) Class 4

Solidité à la Crocking

AATCC-8 (Sec: 4 minimum, Mouillé: 3)

Nettoyage

W/S

Nettoyer avec un produit d'entretien à base d'eau: en fonction de la tâche, vous pouvez nettoyer à sec, à l'aide d'un détergent ou bien avec du shampooing pour meubles.

*Camira reconnaît que le nombre de Wyzenbeek double frottement ne reflète pas la performance de l'usure réelle des tissus. Nous sommes tellement confiants dans la pérennité de nos produits que nous offrons une garantie solide de 10 ans (plus de détails disponibles). Cette gamme est certifiée externe, vous pouvez d'ailleurs trouver plus de détails sur notre site internet ou en contactant un membre de notre Service Clients.

La durabilité d'un tissu et sa capacité à conserver son aspect sont affectées par divers facteurs, y compris son environnement d'installation et son entretien. Un résultat de 100 000 ou plus (Wyzenbeek double frottement) n'est pas un indicateur fiable quant à la longévité d'un tissu.

Une variation de couleurs peut provenir (commerciallement tolérable). Nous réservons le droit de changer les spécifications techniques sans préavis. Les Droits de Conception non-enregistrés et les droits d'auteur de tous les motifs sont la propriété exclusive de Camira Fabrics Limited.

ES

Composición

100% Poliéster. Tintes no metálicos.

Ambiental

Certificado de OEKO-TEX® Standard 100

Ancho

54 pulgadas mínimo

Peso

9^{1/2} oz/sq yd ±5% (14^{1/4} oz/lin.y ±5%)

Resistencia a la abrasión*

ASTM D4157 Wyzenbeek method, Heavy Duty Upholstery independientemente del certificado de ≥100,000 rozamiento doble Con garantía total de uso 10 años (más información disponible bajo consulta)

Inflamabilidad

California Technical Bulletin 117 - 2013
NFPA 260 + UFAC Class 1
BS 7176 Low Hazard
ASTM E84 Class 1 or A (Adhered)
ASTM E84 Class 1 or A (Un-adhered)
UL 723

Nota: El rendimiento de la inflamabilidad depende de los componentes usados. Nuestros certificados muestran qué substratos se han usado en nuestros tests. Para tests compuestos nuestros clientes deben asegurar si sus muebles cumplen la normativa al uso.

Solidez a la Luz

AATCC-16 (40 heures) Class 4

Solidez al Rozamiento

AATCC-8 (Seco: 4, Húmedo: 3)

Limpieza

W/S

Lavar con un producto de limpieza neutro o solvente: en función de la suciedad o mancha, se puede limpiar con un producto de limpieza en seco, espuma templada o producto de limpieza de sofás.

*Camira reconoce que el número de Wyzenbeek doble frotta no refleja el rendimiento real del desgaste de los tejidos. Estamos tan seguros de la durabilidad de nuestros tejidos que ofrecemos una garantía íntegra de 10 años (los detalles completos están disponibles). Esta gama está certificada externamente, todos los detalles están disponibles en nuestra web y en el departamento de atención al cliente.

Muchos factores afectan la durabilidad y el aspecto del tejido, incluyendo el usuario final y el mantenimiento adecuado. Por encima de 100.000 (Wyzenbeek doble frotta), no se ha demostrado que indique una mayor durabilidad de los tejidos.

Se reserva el derecho de modificar las especificaciones técnicas sin previo aviso. Los derechos sobre dibujos no registrados y los derechos de autor sobre todos los dibujos son propiedad exclusiva de Camira Group Inc.