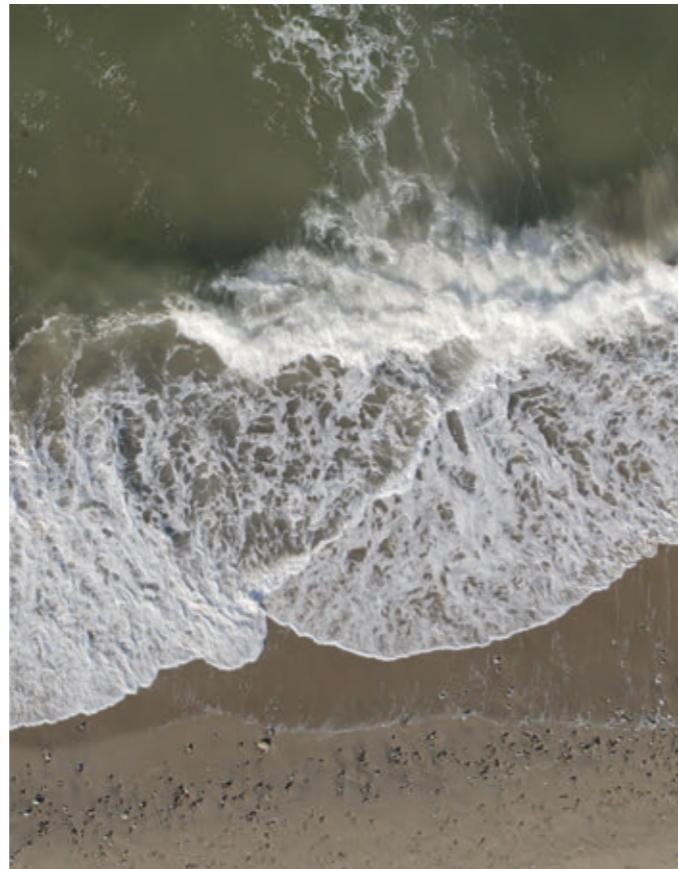


BOLIA MATERIALS

SPRING/SUMMER 24



MATERIALS WE LOVE



A TRIBUTE TO NATURE

When we carefully select the materials we use to create our designs, we are inspired by the ever-changing nature that surrounds us. The magnificent natural textures, the soft colours, the calming atmospheres, and the breathtaking landscapes.



CAREFULLY SELECTED MATERIALS

We create beautiful and timeless quality designs that are designed and built to last. The solid craftsmanship and durable, certified materials let us offer you a 10-year warranty on every single design in our collection.

TESTED, CERTIFIED, DURABLE & SAFE

We focus on using more sustainable, long-lasting and safe materials in our designs, such as FSC® certified wood, traceable leathers, EU Ecolabel and STANDARD 100 by OEKO-TEX certified fabrics, and more.

| | |
|---------|-------------------------------------|
| 5 | FABRICS |
| 6 - 7 | BOUCLÉ |
| 8 - 9 | WOOL |
| 10 - 11 | VELVET & CORDUROY |
| 12 - 13 | RECYCLED FIBRES |
| 14 - 15 | FLAT-WOVEN |
| 16 - 17 | COARSE-WOVEN |
| 18 - 19 | OUTDOOR FABRICS |
| 20 - 23 | LEATHER & NUBUCK |
| 24 - 27 | STONES |
| 28 - 31 | WOOD & LAMINATE |
| 32 - 33 | RUGS |
| 34 - 35 | HAND-KNOTTED & LOOM-KNOTTED RUGS |
| 36 - 37 | FLAT WEAVE LOOMED & PIT LOOMED RUGS |
| 38 - 39 | HAND TUFTED RUGS |
| 40 - 41 | KELIM RUGS |
| 42 - 43 | OUTDOOR RUGS |
| 44 - 45 | FABRIC & LEATHER OVERVIEW |
| 46 - 47 | RUG OVERVIEW |



FABRICS

TACTILE FABRICS

Bouclé, New Zealand wool, linen, velvet, or durable textiles made from recycled fibres. Whatever you prefer, you can be sure that every fabric is of the finest quality. Discover the beautiful variants within each category and read about how to best care for your fabric.

OEKO-TEX® STANDARD 100

All our fabrics and Soft Collection are OEKO-TEX® STANDARD 100 certified. This means that the textile has been tested for harmful substances. The test is conducted by independent OEKO-TEX® institutes, taking into account both regulated and non-regulated substances that can be harmful to human health. In many cases, limit values go far beyond national and international requirements. The criteria are updated at least once a year and expanded on the basis of new scientific and statutory requirements.

FABRICS

BOUCLÉ

WOOL

VELVET & CORDUROY

RECYCLED FIBRES

FLAT-WOVEN

COARSE-WOVEN

OUTDOOR FABRICS

LEATHER & NUBUCK

STONES

WOOD & LAMINATE

RUGS

HAND-KNOTTED &
LOOM-KNOTTED RUGS

FLAT WEAVE LOOMED
& PIT LOOMED RUGS

HAND-TUFTED RUGS

KELIM RUGS

OUTDOOR RUGS

FABRIC & LEATHER
OVERVIEW

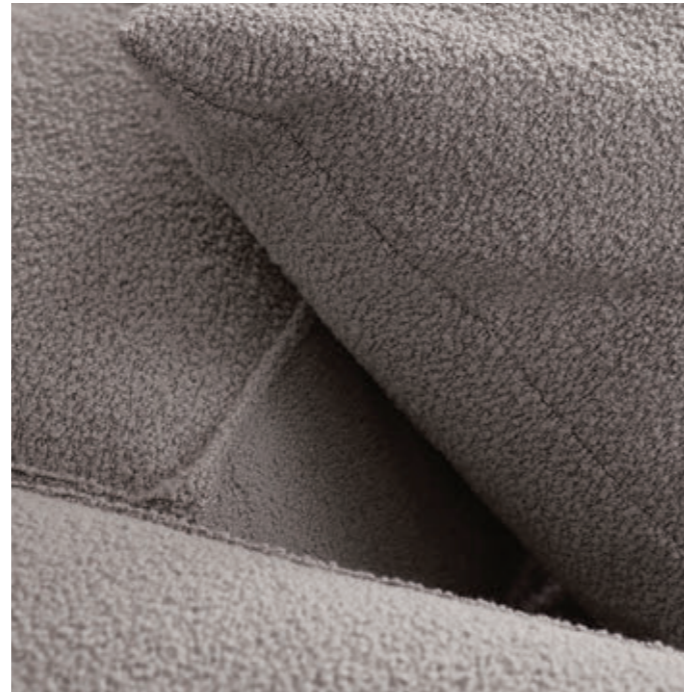
RUG OVERVIEW



BOUCLÉ

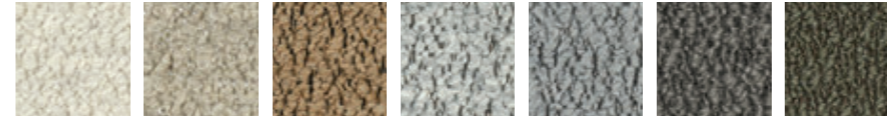
Organic luxury

With its luxurious surface and inviting softness, bouclé fabric stimulates the senses. Woven with an elegant technique, where small loops are combined to create the unique organic texture and feel that characterises the fabric. Discover our beautiful selection with Paza, Vilme, Ascot and Monza furniture fabrics.



Paza

A luxurious bouclé fabric that invites you to slow down and enjoy the moment. Woven in the classic bouclé structure that instantly makes the room visually interesting.



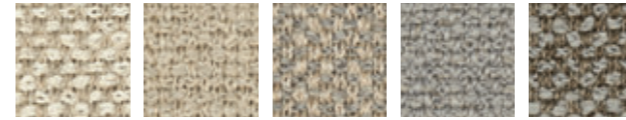
SPECIFICATIONS

| | |
|-------------------|---|
| Material | 65% Polycarbamide / 27% Polyester / 4% Cotton / 4% Viscose |
| Price Group | 5 |
| Martindale | 60,000 |
| Light fastness | 5 |
| Pilling | 4-5 |
| Country of origin | Belgium |
| Certifications | OEKO-TEX® STANDARD 100 - 1908101, CAL TB 117-2013, EN 1021-1, EN 1021-2 |



Vilme

Vilme is made in Italy from exclusive European yarn. The fabric has a rustic weave with luxurious softness and a beautiful, clear structure with a subtle interplay of colours - perfect for creating a soft and tactile expression in your interior design.



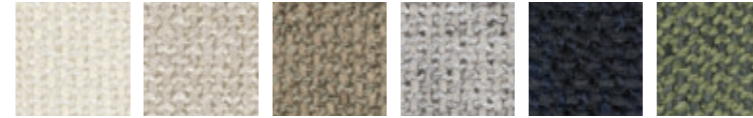
SPECIFICATIONS

| | |
|-------------------|---|
| Material | 47% Polycarbamide / 20% Cotton / 13% Polyester / 11% Viscose / 9% Linen |
| Price Group | 5 |
| Martindale | 60,000 |
| Light fastness | 5 |
| Pilling | 4 |
| Country of origin | Italy |
| Certifications | OEKO-TEX® STANDARD 100 -1908101, CAL TB 117-2013, EN 1021-1, EN 1021-2 |



Ascot

Ascot is a bouclé with a fine, densely woven structure and soft surface. The upholstery fabric unites the best of both worlds by combining durable, synthetic fibres with cotton and wool.



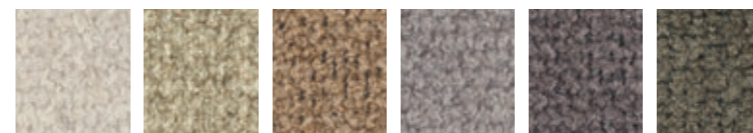
SPECIFICATIONS

| | |
|-------------------|--|
| Material | 39% Polyacrylic / 39% Polyester / 14% Cotton / 8% Wool |
| Price Group | 5 |
| Martindale | 28,000 |
| Light fastness | 4 |
| Pilling | 4-5 |
| Country of origin | Romania |
| Certifications | OEKO-TEX® STANDARD 100 - 1908090, CAL TB 117-2013, EN 1021-1 |



Monza

Monza is a soft and woollen bouclé with a beautiful and vibrant structure. Woven in Italy with an extremely high abrasion resistance in a blend of wool, cotton, viscose and synthetic fibres, ensuring colour and durability - year after year.



SPECIFICATIONS

| | |
|-------------------|--|
| Material | 26% Acrylic / 24% Cotton / 20% Viscose / 16% Wool / 12% Polyester |
| Price Group | 6 |
| Martindale | 80,000 |
| Light fastness | 7 |
| Pilling | 4 |
| Country of origin | Italy |
| Certifications | OEKO-TEX® STANDARD 100- 1812101, CAL TB 117-2013, EN 1021-1, EN 1021-2 |



FABRICS

BOUCLÉ

WOOL

VELVET & CORDUROY

RECYCLED FIBRES

FLAT-WOVEN

COARSE-WOVEN

OUTDOOR FABRICS

LEATHER & NUBUCK

STONES

WOOD & LAMINATE

RUGS

HAND-KNOTTED & LOOM-KNOTTED RUGS

FLAT WEAVE LOOMED & PIT LOOMED RUGS

HAND-TUFTED RUGS

KELIM RUGS

OUTDOOR RUGS

FABRIC & LEATHER OVERVIEW

RUG OVERVIEW



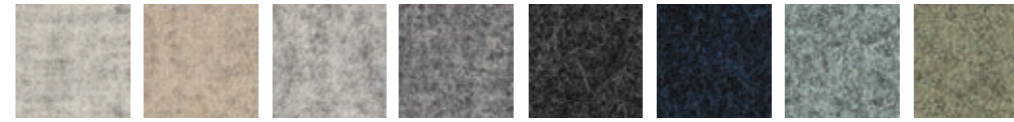
WOOL

Natural softness

Our wool upholstery fabrics are made from 100% New Zealand wool and are characterised by their warm and natural expression - and the irresistible softness. Laine is certified with the EU Ecolabel and has a light melange effect that creates a vibrant surface. Qual has a rustic appearance and a beautiful structure. Gaja has a Cradle to Cradle Silver certification™. All are of course STANDARD 100 by OEKOTEX® certified.

Qual

Qual is made from 100% pure wool from New Zealand and is a classic wool fabric with a soft and warm texture. Wool is naturally stain and abrasion-resistant, so you get a durable upholstery fabric of the highest quality.



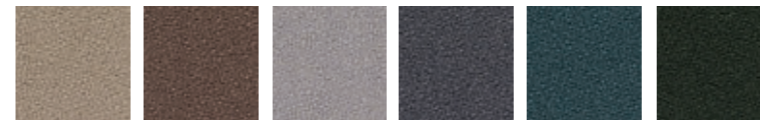
SPECIFICATIONS

| | |
|-------------------|--|
| Material | 100% Wool |
| Price Group | 4 |
| Martindale | 76,000 |
| Light fastness | 5 |
| Pilling | 4 |
| Country of origin | Lithuania |
| Certifications | OEKO-TEX® STANDARD 100 - 1076-182 DTI, CAL TB 117-2013, EN 2021-1, EN-2021-2, BS 5852 Source 0 & 1 |



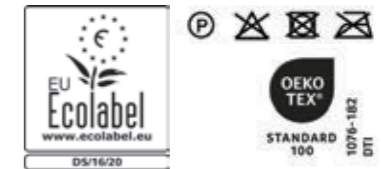
Gaja

Gaja is a beautiful plain and soft fabric. It is OEKO-TEX® STANDARD 100 certified, Cradle to Cradle™ Silver and bears the EU Ecolabel. This makes it a fabric that has a documented smaller environmental impact compared to other fabrics.



SPECIFICATIONS

| | |
|-------------------|---|
| Material | 100% New Zealand Wool |
| Price Group | 5 |
| Martindale | 50,000 |
| Light Fastness | 5-7 |
| Pilling | 4-5 |
| Country of origin | Lithuania |
| Certifications | OEKO-TEX® STANDARD 100 - 1076-182 DTI, EU Eco label DS.16.20, CAL TB 117-2013, EN 1021-1, EN 1021-2, BS 5852 Source 0 & 1 |



Laine

Laine is a luxurious wool fabric with a very high abrasion resistance, woven in 92% wool from New Zealand. The upholstery fabric has a vibrant expression with melange effect and an irresistibly soft and warm texture.



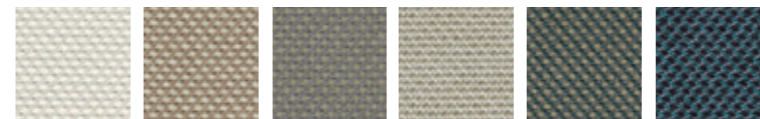
SPECIFICATIONS

| | |
|-------------------|---|
| Material | 92% Wool / 8% Polyamide |
| Price Group | 6 |
| Martindale | 95,000 |
| Light Fastness | 6-7 |
| Pilling | 3-4 |
| Country of origin | Lithuania |
| Certifications | OEKO-TEX® STANDARD 100 - 1076-182 DTI, EU Eco label DS.16.20, CAL TB 117-2013, BS 5852 Source 0 & 1, BS 5852 Source 5, EN 1021-1, EN 1021-2 |



Mira

Mira is woven with a melange effect, where two complementary tones are mixed to create a delicate and vibrant interplay of colours in the weave. The structure is firm with a soft surface and the yarn is fine with the dense weave.



SPECIFICATIONS

| | |
|-------------------|---|
| Material | 100% Wool |
| Price Group | 6 |
| Martindale | 70,000 |
| Light Fastness | 4-5 |
| Pilling | 3-4 |
| Country of origin | Italy |
| Certifications | OEKO-TEX® STANDARD 100 - 1812101, CAL TB 117-2013, EN 1021-1, EN 1021-2, BS 5852 part 0 & 1, BS 5852 Source 5 |



FABRICS

BOUCLÉ

WOOL

VELVET & CORDUROY

RECYCLED FIBRES

FLAT-WOVEN

COARSE-WOVEN

OUTDOOR FABRICS

LEATHER & NUBUCK

STONES

WOOD & LAMINATE

RUGS

HAND-KNOTTED & LOOM-KNOTTED RUGS

FLAT WEAVE LOOMED & PIT LOOMED RUGS

HAND-TUFTED RUGS

KELIM RUGS

OUTDOOR RUGS

FABRIC & LEATHER OVERVIEW

RUG OVERVIEW



VELVET & CORDUROY

A timeless and luxurious expression

Velvet & corduroy fabrics catch the light in an eye-catchingly beautiful way, and are both durable and easy to maintain. Globa has a modern retro look and Linea offers a discreet and fine interplay of colours.



Linea

Linea is a classic corduroy with the fine, inviting lines. The fabric feels soft to the touch and has an incredible durability, allowing it to be washed at 30° and making it suitable for any busy setting.



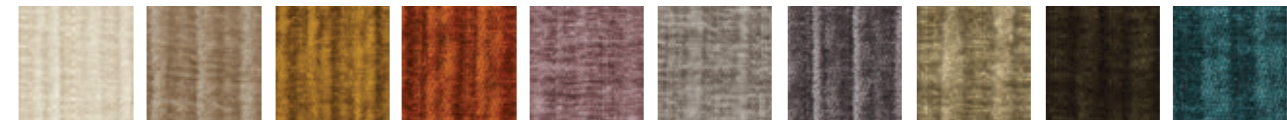
SPECIFICATIONS

| | |
|-------------------|---|
| Material | 85% Polyester / 15% Acrylic |
| Price Group | 4 |
| Martindale | 100,000 |
| Light fastness | 5 |
| Pilling | 4-5 |
| Country of origin | China |
| Certifications | OEKO-TEX® STANDARD 100 - 1776-271 DTI, CAL TB 117-2013, EN 1021-1-1 |



Globa

Globa is a luxurious upholstery fabric with striped velvet effect, reminiscent of iconic 1970s design. The fabric is woven in a special way that creates a vibrant texture that catches the light beautifully.



SPECIFICATIONS

| | |
|-------------------|--|
| Material | 46% Polyester, 46% Acrylic, 8% Viscose |
| Price Group | 6 |
| Martindale | 25,000 |
| Light Fastness | 5 |
| Pilling | 4-5 |
| Country of origin | Turkey |
| Certifications | OEKO-TEX® STANDARD 100 - 1505024 Centexbel, CAL TB 117-2013, EN 1021-1, EN 1021-2, CAL TB 117-2013, EN 1021-1, EN 1021-2 |



- FABRICS
- BOUCLÉ
- WOOL
- VELVET & CORDUROY
- RECYCLED FIBRES
- FLAT-WOVEN
- COARSE-WOVEN
- OUTDOOR FABRICS
- LEATHER & NUBUCK
- STONES
- WOOD & LAMINATE
- RUGS
- HAND-KNOTTED & LOOM-KNOTTED RUGS
- FLAT WEAVE LOOMED & PIT LOOMED RUGS
- HAND-TUFTED RUGS
- KELIM RUGS
- OUTDOOR RUGS
- FABRIC & LEATHER OVERVIEW
- RUG OVERVIEW



RECYCLED FIBRES

From waste to beauty

We offer a selection of beautiful fabrics made with recycled fibres. All sharing a very high abrasion resistance - with a just as soft and inviting texture as fabrics in natural fibres. Revi and Bergo are made from 100% recycled post-consumer plastic and Bergo bears the EU Ecolabel. Sira is made from 100% recycled, woven cotton, with a natural and soft expression, and Tie bouclé and Soil are made in a mix of new and recycled fibres.

Bergo

Bergo is woven with a beautiful structure that creates a warm and tactile look. The fabric is certified with the official EU Ecolabel, which sets strict requirements for both production and the finished product.



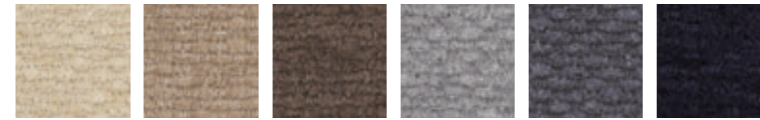
SPECIFICATIONS

| | |
|-------------------|---|
| Material | 98% Recycled Polyester / 2% Polyester |
| Price Group | 3 |
| Martindale | 100,000 |
| Light fastness | 6-7 |
| Pilling | 5 |
| Country of origin | Lithuania |
| Certifications | OEKO-TEX® STANDARD 100 - 1076-182 DTI, EU Eco label DS.16.20, CAL TB 117-2013, EN 1021-1, EN 1021-2 |



Sira

Sira has a beautiful and vibrant structure with a rustic expression, and is for those who want a natural, soft and calming upholstery fabric. Woven in Italy from 100% recycled cotton, at a manufacturer that uses only solar and wind energy.



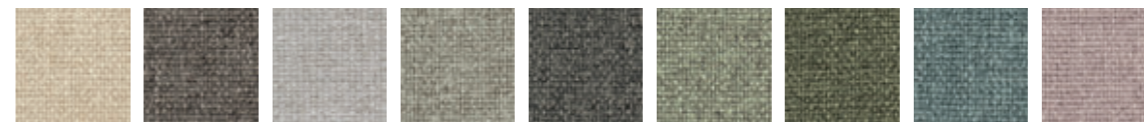
SPECIFICATIONS

| | |
|-------------------|--|
| Material | 100% Recycled Cotton |
| Price Group | 3 |
| Martindale | 60,000 |
| Light fastness | 4-5 |
| Pilling | 3-4 |
| Country of origin | Italy |
| Certifications | OEKO-TEX® STANDARD 100 - 1908101, CAL TB 117-2013, EN 1021-1 |



Soil

Soil is a flat-woven upholstery fabric with a natural expression and very high durability. The soft, brushed finish gives a warm and inviting look and the upholstery fabric can be washed at 30°.



SPECIFICATIONS

| | |
|-------------------|---|
| Material | 60% Recycled Polyethylene / 40% Polyester |
| Price Group | 3 |
| Martindale | 100,000 |
| Light fastness | 4-5 |
| Pilling | 4 |
| Country of origin | China |
| Certifications | OEKO-TEX® STANDARD 100 - 2110214, CAL TB 117-2013, EN 1021-1, EN 1021-2 |



Tie

A beautifully textured fabric featuring a unique pattern of interwoven yarns in a tactile mix of textures, thickness, and colour. The delicate pattern is achieved through the use of a jacquard loom, creating a striking yet poetic appearance.



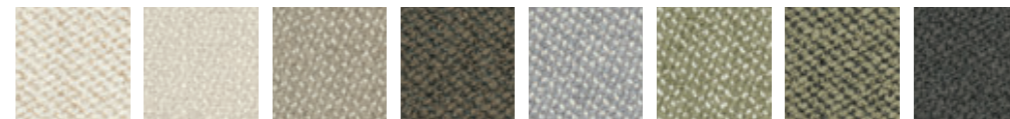
SPECIFICATIONS

| | |
|-------------------|--|
| Material | 45% rPET / 32% Acrylic / 10% Recycled Pre-Consumer Cotton / 7% Polyester / 6% Wool |
| Price Group | 5 |
| Martindale | 35,000 |
| Light fastness | 5 |
| Pilling | 4-5 |
| Country of origin | Slovakia |
| Certifications | OEKO-TEX® STANDARD 100 - 2110214, BS 5852 Source 0 & 1, CAL TB 117-2013 |



Revi

Revi is made of 97,9% recycled polyester - of which 18% is ocean waste plastic - with a beautiful, warm and welcoming expression. It is a fabric with extremely high abrasion resistance and a soft and comfortable surface.



SPECIFICATIONS

| | |
|-------------------|---|
| Material | 100% Recycled Polyester |
| Price Group | 5 |
| Martindale | 100,000 |
| Light fastness | 5 |
| Pilling | 5 |
| Country of origin | Romania |
| Certifications | OEKO-TEX® STANDARD 100 - 2206139, CAL TB 117-2013, EN 1021-1, EN 1021-2 |





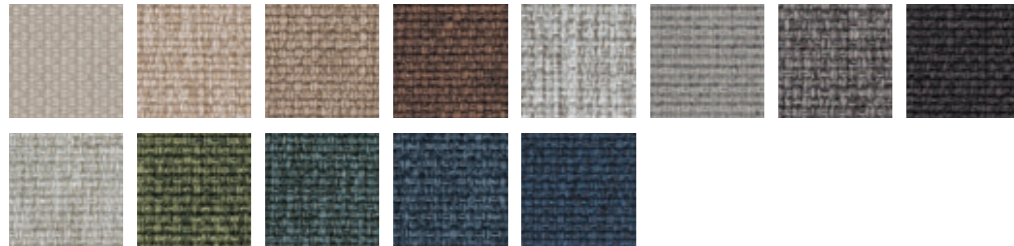
FLAT-WOVEN

A simple and airy expression

Flat-woven fabrics like linen have an airy, soft and inviting quality that invites nature all the way inside. Natural fibres are durable but are affected by light and use. Therefore, they can be mixed with durable, synthetic fibres to create a result that is both beautiful and practical.

London

London is woven with a distinct structure and shiny surface. The fabric is woven from durable polyester, with very high abrasion resistance, making it suitable for both private and professional use. Washable at 30°.



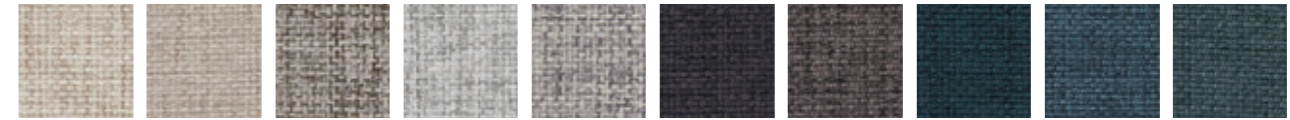
SPECIFICATIONS

| | |
|-------------------|---|
| Material | 100% Polyester |
| Price Group | 4 |
| Martindale | 100,000 |
| Light fastness | 4 |
| Pilling | 4-5 |
| Country of origin | China |
| Certifications | OEKO-TEX® STANDARD 100 - 1776-271 DTI, CAL TB 117-2013, EN 1021-1 |



Nantes

Nantes is a timeless upholstery fabric with a fine weave and very high durability, which makes it suitable for both private homes and professional use. Washable at 30°.



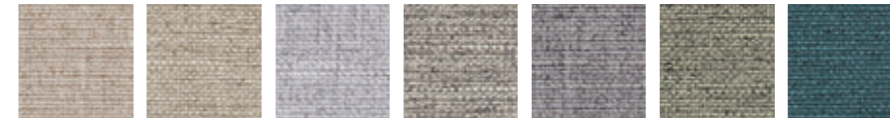
SPECIFICATIONS

| | |
|-------------------|---|
| Material | 100% Polyester |
| Price Group | 1 |
| Martindale | 120,000 |
| Light fastness | 5 |
| Pilling | 4-5 |
| Country of origin | China |
| Certifications | OEKO-TEX® STANDARD 100 - 1776-271 DTI, CAL TB 117-2013, EN 1021-1 |



Baize

Baize is a soft upholstery fabric with a finely woven structure that gives it a natural appearance and a completely classic and timeless look. The fabric can be washed at 30°.



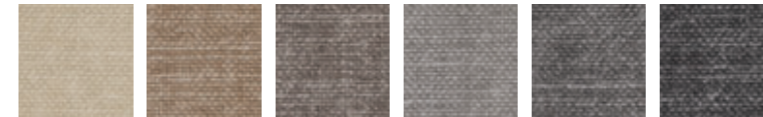
SPECIFICATIONS

| | |
|-------------------|--|
| Material | 100% Polyester |
| Price Group | 3 |
| Martindale | 78,000 |
| Light fastness | 5 |
| Pilling | 4-5 |
| Country of origin | China |
| Certifications | OEKO-TEX® STANDARD 100 - 1776-271 DTI, CAL TB 117, EN 1021-1 |



Pure

Pure is a beautiful and irresistibly fabric woven in Spain in European linen and cotton. The natural yarns create a fine interplay of colours and an irresistibly soft fabric.



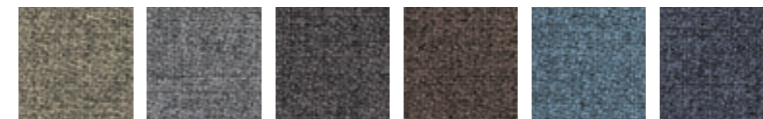
SPECIFICATIONS

| | |
|-------------------|--|
| Material | 60% Cotton / 40% Linen |
| Price Group | 4 |
| Martindale | 24,000 |
| Light fastness | 5-6 |
| Pilling | 4-5 |
| Country of origin | Spain |
| Certifications | OEKO-TEX® STANDARD 100 - 1908090, CAL TB 117-2013, EN 1021-1 |



Step Melange

Step Melange is an extremely abrasion resistant upholstery fabric, woven with a vibrant and visually appealing interplay of colours with a beautiful melange effect. Washable at 30°.



SPECIFICATIONS

| | |
|-------------------|--|
| Material | 100% Trevira CS Polyester |
| Price Group | 4 |
| Martindale | 100,000 |
| Light fastness | 8 |
| Pilling | 4-5 |
| Country of origin | Lithuania |
| Certifications | OEKO-TEX® STANDARD 100 - 1076-182 DTI, EU Eco label DS.16.20, EN 1021-1, EN 1021-2, BS 5852 Source 0 & 1, BS 5852 Source 5 |



FABRICS

BOUCLÉ

WOOL

VELVET & CORDUROY

RECYCLED FIBRES

FLAT-WOVEN

COARSE-WOVEN

OUTDOOR FABRICS

LEATHER & NUBUCK

STONES

WOOD & LAMINATE

RUGS

HAND-KNOTTED & LOOM-KNOTTED RUGS

FLAT WEAVE LOOMED & PIT LOOMED RUGS

HAND-TUFTED RUGS

KELIM RUGS

OUTDOOR RUGS

FABRIC & LEATHER OVERVIEW

RUG OVERVIEW

COARSE-WOVEN

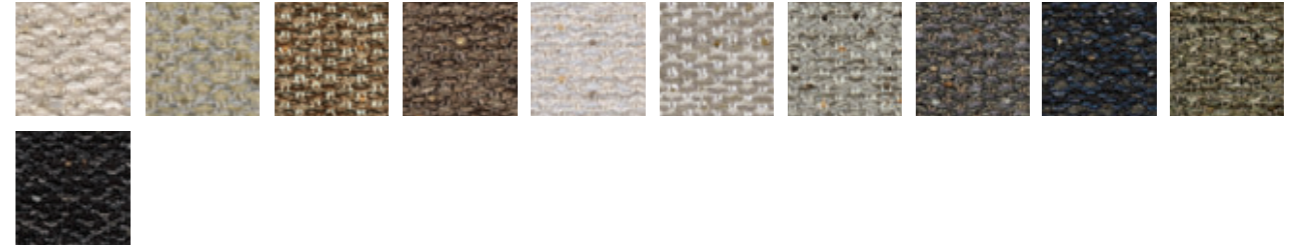
Elegant structures

Coarsely woven fabrics have a strong quality and feature beautiful, inviting textures that catch the light and awaken the senses. A coarsely woven fabric is better at concealing small colour differences and stains than a flat woven fabric and is blended with both natural and synthetic fibres for superior durability.



Memory

Memory has a roughly textured weave, with a fine melange effect that creates a fabric with a vibrant structure and an eye-catching interplay of colours. Woven in Belgium in a blend of natural and synthetic European yarns.



SPECIFICATIONS

| | |
|-------------------|---|
| Material | 56% Acrylic / 30% Polyester / 7% Viscose / 5% Linen / 2% Cotton |
| Price Group | 4 |
| Martindale | 40,000 |
| Light fastness | 5 |
| Pilling | 4-5 |
| Country of origin | Belgium |
| Certifications | OEKO-TEX® STANDARD 100 - 1908101, CAL TB 117-2013, EN 1021-1, EN 1021-2 |



FABRICS

BOUCLÉ

WOOL

VELVET & CORDUROY

RECYCLED FIBRES

FLAT-WOVEN

COARSE-WOVEN

OUTDOOR FABRICS

LEATHER & NUBUCK

STONES

WOOD & LAMINATE

RUGS

HAND-KNOTTED & LOOM-KNOTTED RUGS

FLAT WEAVE LOOMED & PIT LOOMED RUGS

HAND-TUFTED RUGS

KELIM RUGS

OUTDOOR RUGS

FABRIC & LEATHER OVERVIEW

RUG OVERVIEW



OUTDOOR FABRICS

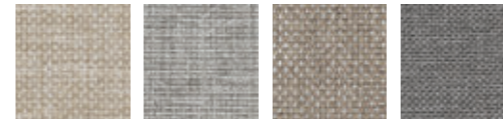
Fabrics for outdoor living

We love creating inspiring spaces, both inside and outside. Our beautiful and durable outdoor fabrics have been specially developed for easy maintenance for carefree outdoor life.



Brezza

With a soft, woven structure and a subtle interplay of colours that gives it a natural look. The fabric is woven in Olefin-Harmolan – a durable fibre made of polypropylene, which is water and stain resistant.



SPECIFICATIONS

| | |
|-------------------|----------------------------------|
| Material | 100% Olefin |
| Price Group | 3 |
| Martindale | 30,000 |
| Light fastness | 7 |
| Pilling | 4 |
| Country of origin | Belgium |
| Certifications | OEKO-TEX® STANDARD 100 - 1105021 |



Palma

Palma has a natural, Nordic expression and is woven in 100% harmolan PP – a uniquely durable fibre. Harmolan fabrics are inherently dirt-repellent, anti-static, fast-drying, and washable. In other words; perfect for enjoying life outside.



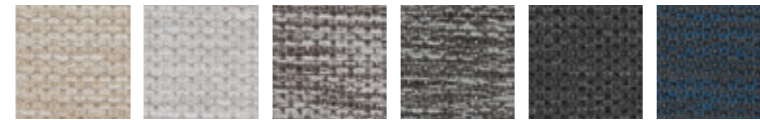
SPECIFICATIONS

| | |
|-------------------|----------------------------------|
| Material | 100% Harmolan PP |
| Price Group | 4 |
| Martindale | 50,000 |
| Light fastness | 6 |
| Pilling | 5 |
| Country of origin | Belgium |
| Certifications | OEKO-TEX® STANDARD 100 - 1105021 |



Ocean

Ocean is a durable upholstery fabric with unique qualities and an irresistibly soft surface. The olefin fibres in which the fabric is woven are dyed before the yarn is spun, which means that the fabric has a very high light fastness.



SPECIFICATIONS

| | |
|-------------------|---|
| Material | 100% Olefin |
| Price Group | 4 |
| Martindale | 45,000 |
| Light fastness | 8 |
| Pilling | 4 |
| Country of origin | Belgium |
| Certifications | OEKO-TEX® STANDARD 100 - 1105021, EN 1021-1 |



FABRICS

BOUCLÉ

WOOL

VELVET & CORDUROY

RECYCLED FIBRES

FLAT-WOVEN

COARSE-WOVEN

OUTDOOR FABRICS

LEATHER & NUBUCK

STONES

WOOD & LAMINATE

RUGS

HAND-KNOTTED & LOOM-KNOTTED RUGS

FLAT WEAVE LOOMED & PIT LOOMED RUGS

HAND-TUFTED RUGS

KELIM RUGS

OUTDOOR RUGS

FABRIC & LEATHER OVERVIEW

RUG OVERVIEW



LEATHER & NUBUCK

NATURAL BEAUTY

Leather is a timeless, natural material that changes and patinates beautifully over time, just like you. And every piece is unique. Together with solid wood, leather is a classic element of our Scandinavian design heritage - an iconic and quality-conscious material that will last for generations.

- FABRICS
- BOUCLÉ
- WOOL
- VELVET & CORDUROY
- RECYCLED FIBRES
- FLAT-WOVEN
- COARSE-WOVEN
- OUTDOOR FABRICS
- LEATHER & NUBUCK**
- STONES
- WOOD & LAMINATE
- RUGS
 - HAND-KNOTTED & LOOM-KNOTTED RUGS
 - FLAT WEAVE LOOMED & PIT LOOMED RUGS
 - HAND-TUFTED RUGS
 - KELIM RUGS
 - OUTDOOR RUGS
 - FABRIC & LEATHER OVERVIEW
 - RUG OVERVIEW



A SAFE JOURNEY

For us, traceability is an important part of responsible design, and we work with our suppliers to achieve 100% transparency across all supply chains, so we can track the journey from raw material to your living room. All leather that we use either comes from Europe or Australia, which not only ensures that the leather is of the best quality, but also that it comes from areas where animal welfare is imposed by law.



Sydney Traceable

Sydney Traceable is an exclusive, traceable aniline leather from Italy, with a classic and timeless feel. The natural and untreated surface gives the leather a beautiful and vibrant expression with fine variations in structure and colour.



SPECIFICATIONS

| | |
|-------------------|--|
| Type | Aniline - Patinates beautifully over time |
| Price Group | 7 |
| Light fastness | 3 |
| Country of origin | Italy |
| Certifications | OEKO-TEX® LEATHER STANDARD - 2276-359L DTI, BS 5852 Source 0 & 1 |



Quattro by Spoor

Quattro leather by SPOOR is a chrome-free and biodegradable premium Scandinavian leather. Each piece can be traced all the way from farm to finished product – sourced exclusively from Danish and Swedish cows.



SPECIFICATIONS

| | |
|-------------------|---|
| Type | Surface-Treated Leather - Resistant to wear and stains |
| Price Group | 7 |
| Light fastness | 4-5 |
| Country of origin | Denmark and Sweden |
| Certifications | CAL TB 117-2013, EN 1021-1, EN 1021-2, BS 5852 Source 0 & 1 |

Austin Nubuck

A luxurious and irresistibly soft nubuck leather. Nubuck means that it is an aniline leather where the outside is lightly buffed to achieve the velvety surface that resembles suede – but where the strength of the full-grain leather is retained.



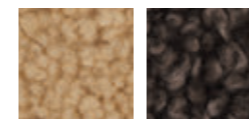
SPECIFICATIONS

| | |
|-------------------|--|
| Type | Nubuck Leather - Patinates beautifully over time |
| Price Group | 8 |
| Light fastness | 3 |
| Country of origin | Slovakia |
| Certifications | OEKO-TEX® LEATHER STANDARD - VN041 191008 OETI, BS 5852 Source 0 & 1, EN 1021-1, EN 1021-2 |



Vella

Vella is a soft and natural sheepskin of the highest quality from New Zealand. Perfect for creating warm and comforting moments in your home, with its luxurious softness and soothing texture.



SPECIFICATIONS

| | |
|-------------------|--|
| Composition | 100% Sheepskin |
| Price Group | 9 |
| Martindale | 32,000 |
| Light fastness | 3 |
| Country of origin | New Zealand |
| Certifications | OEKO-TEX® LEATHER STANDARD - 2376-370L DTI |



FABRICS

BOUCLÉ

WOOL

VELVET & CORDUROY

RECYCLED FIBRES

FLAT-WOVEN

COARSE-WOVEN

OUTDOOR FABRICS

LEATHER & NUBUCK

STONES

WOOD & LAMINATE

RUGS

HAND-KNOTTED & LOOM-KNOTTED RUGS

FLAT WEAVE LOOMED & PIT LOOMED RUGS

HAND-TUFTED RUGS

KELIM RUGS

OUTDOOR RUGS

FABRIC & LEATHER OVERVIEW

RUG OVERVIEW



STONES

FABRICS

BOUCLÉ

WOOL

VELVET & CORDUROY

RECYCLED FIBRES

FLAT-WOVEN

COARSE-WOVEN

OUTDOOR FABRICS

LEATHER & NUBUCK

STONES

WOOD & LAMINATE

RUGS

HAND-KNOTTED &
LOOM-KNOTTED RUGS

FLAT WEAVE LOOMED
& PIT LOOMED RUGS

HAND-TUFTED RUGS

KELIM RUGS

OUTDOOR RUGS

FABRIC & LEATHER
OVERVIEW

RUG OVERVIEW



Marble

Marble is a breathtakingly beautiful natural stone that has formed in rocks over millions of years. And depending on the unique composition and nature's impact on its place of origin, different types of marble are formed with unique patterns and colours.

No two pieces are alike, which is why every piece of marble furniture will be utterly unique.



Travertine

Travertine is a unique natural stone with a beautiful and dreamy expression.

The tranquil patterns and colours invite calm and nature inside, and together with wood and other natural materials create the framework for a light and soothing universe.



Concrete

Concrete has a calm and stylish appearance that is reminiscent of the clean lines of modern architecture and the raw aesthetics of industry.

A natural material with unique and beautiful properties consisting of only cement, sand, stone and water.



FABRICS

BOUCLÉ

WOOL

VELVET & CORDUROY

RECYCLED FIBRES

FLAT-WOVEN

COARSE-WOVEN

OUTDOOR FABRICS

LEATHER & NUBUCK

STONES

WOOD & LAMINATE

RUGS

HAND-KNOTTED &
LOOM-KNOTTED RUGS

FLAT WEAVE LOOMED
& PIT LOOMED RUGS

HAND-TUFTED RUGS

KELIM RUGS

OUTDOOR RUGS

FABRIC & LEATHER
OVERVIEW

RUG OVERVIEW



WOOD AND LAMINATE

FSC® CERTIFIED WOOD

We love natural, living materials such as solid wood and veneer – oak, walnut and ash – which beautifully reflect our Scandinavian design heritage. Naturally, all the wood we use is FSC®-certified. This means that the wood is sourced from considerate forestry with good working conditions for the forest workers and which ensures that biodiversity is maintained.

FABRICS

BOUCLÉ

WOOL

VELVET & CORDUROY

RECYCLED FIBRES

FLAT-WOVEN

COARSE-WOVEN

OUTDOOR FABRICS

LEATHER & NUBUCK

STONES

WOOD & LAMINATE

RUGS

HAND-KNOTTED &
LOOM-KNOTTED RUGS

FLAT WEAVE LOOMED
& PIT LOOMED RUGS

HAND-TUFTED RUGS

KELIM RUGS

OUTDOOR RUGS

FABRIC & LEATHER
OVERVIEW

RUG OVERVIEW



Solid Wood

Solid wood isn't just beautiful, it's also a durable and luxurious material that brings us closer to nature. Its tactile surface is warm, sensuous and beautiful, and every single piece of wood is unique and patinates beautifully over the years.

Wood is a living material that over time will naturally be affected by its surroundings. A dry and warm room can cause the wood to dry out and contract, and a room with high humidity can cause the wood to expand. It's precisely because of the natural properties of the wood that proper maintenance helps extend its service life.



Veneer

Veneer is formed from very thin slices of wood cut from tree trunks. The fine veneer craftsmanship was originally developed to cover furniture and interiors with rare and expensive wood types - today we use it to maintain the beautiful, natural properties of solid wood, in a more uniform, thin and stable form, which also requires less raw material to produce.



Teak

Teak has unique properties and is extremely durable. The wood naturally has a high oil content, which prevents water and moisture from penetrating the wood and thereby protects it from the elements.

When the furniture is new, it has a beautiful golden colour and gradually as the wood is exposed to sunlight and oxidation, it will fade and turn silvery grey. Because of this, you can choose the look you want your furniture to have. If you love the greyish, faded look, don't apply oil. If you prefer the warm glow, you should treat it with oil regularly.



Laminate

Laminate is a durable material with many beautiful possibilities, with a soft and pleasant surface that is very durable and flexible. It is suitable for busy homes, dining tables and public spaces that experience lots of wear and tear.

We only use HPL laminate and FENIX NTM nanolaminate, created by Italian Arpa Industriale.



FABRICS

BOUCLÉ

WOOL

VELVET & CORDUROY

RECYCLED FIBRES

FLAT-WOVEN

COARSE-WOVEN

OUTDOOR FABRICS

LEATHER & NUBUCK

STONES

WOOD & LAMINATE

RUGS

HAND-KNOTTED & LOOM-KNOTTED RUGS

FLAT WEAVE LOOMED & PIT LOOMED RUGS

HAND-TUFTED RUGS

KELIM RUGS

OUTDOOR RUGS

FABRIC & LEATHER OVERVIEW

RUG OVERVIEW



RUGS

HANDWOVEN RUGS

We are members of the Care & Fair organisation. An initiative founded in 1994, to support local weavers, particularly in India and Nepal. It ensures that traditional millennium-old craftsmanship lives on but with the provision of responsible working conditions and access to schooling and medical care for the weavers and their families. And all our handwoven rugs carry the Care & Fair label - as well as being of the finest, durable quality.

FABRICS

BOUCLÉ

WOOL

VELVET & CORDUROY

RECYCLED FIBRES

FLAT-WOVEN

COARSE-WOVEN

OUTDOOR FABRICS

LEATHER & NUBUCK

STONES

WOOD & LAMINATE

RUGS

HAND-KNOTTED &
LOOM-KNOTTED RUGS

FLAT WEAVE LOOMED
& PIT LOOMED RUGS

HAND-TUFTED RUGS

KELIM RUGS

OUTDOOR RUGS

FABRIC & LEATHER
OVERVIEW

RUG OVERVIEW



HAND-KNOTTED RUGS

Hand knotting is the oldest method of making rugs and originated in Central Asia over two thousand years ago. The hand-knotted production technique involves skilled rugmakers manually tying each knot into threads wrapped around a vertical loom. The process is timeconsuming and requires precision, but it results in high-quality rugs with intricate patterns and durability.



LOOM-KNOTTED RUGS

Loom-knotted refers to a method of making rugs using a mechanical or semi-mechanical device used to facilitate the weaving process. In loom-knotted rugs, the knots are usually premade or mechanically tied. Loom-knotted rugs use a combination of mechanical processes and human control to create the rug. This method allows for more efficient rug production compared to hand-knotted rugs.

Alve

An inviting kelim rug, handmade with subtle details like fringing and a delicate, ribbed pattern contrasted by a flatwoven border. A contemporary rug that is at the same time refined and rustic.



SPECIFICATIONS

| | |
|-------------------|---|
| Material | 100% Undyed Wool |
| Available Sizes | 140 x 200, 170 x 240, 200 x 300, 250 x 350, Ø200, Ø300 cm |
| Country of origin | India |
| Technique | Hand-Knotted |
| Certifications | Care & Fair, 16 CFR 1630 |

Brida

Brida is an exclusive rug with a distinctive look. The rug is hand-woven using a very special weaving method, creating Brida's elegant texture and look. It also gives Brida a unique reflective and lustrous effect, seen from different angles.



SPECIFICATIONS

| | |
|-------------------|---|
| Material | 100% Linen |
| Available Sizes | 70 x 140, 80 x 250, 140 x 200, 170 x 240, 200 x 300, 250 x 350 cm |
| Country of origin | India |
| Technique | Loom-knotted |
| Certifications | Care & Fair, 16 CFR 1630 |

Vilde

With exclusive notes and characteristics, Vilde brings something truly special to the floor. Made of wool and flax, the rug holds a distinctive, contradicting yet beautiful expression.



SPECIFICATIONS

| | |
|-------------------|--|
| Material | 50% Wool / 50% Linen |
| Available Sizes | 70 x 140, 80 x 250, 140 x 200, 170 x 240, 200 x 300, 250 x 350, 300 x 400 cm |
| Country of origin | India |
| Technique | Loom-knotted |
| Certifications | Care & Fair, 16 CFR 1630 |

FABRICS

BOUCLÉ

WOOL

VELVET & CORDUROY

RECYCLED FIBRES

FLAT-WOVEN

COARSE-WOVEN

OUTDOOR FABRICS

LEATHER & NUBUCK

STONES

WOOD & LAMINATE

RUGS

HAND-KNOTTED & LOOM-KNOTTED RUGS

FLAT WEAVE LOOMED & PIT LOOMED RUGS

HAND-TUFTED RUGS

KELIM RUGS

OUTDOOR RUGS

FABRIC & LEATHER OVERVIEW

RUG OVERVIEW

FLAT WEAVE LOOMED

Flatweave rugs are made by weaving threads in a flat pattern without a pile. This makes the rug thinner and lighter compared to e.g. hand-loomed rugs.



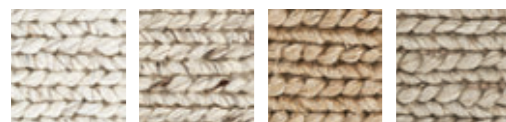
PIT LOOMED

A pit loom is set into the ground or a pit, as the name suggests. This means that a portion of the loom is situated below ground level, providing a stable and fixed frame for weaving.



Braid

Braid is a series of rugs woven by hand in a luxurious mix of wool and viscose. The natural fibres create a plush and luxurious texture, woven with the delicately braided structure that has given the series its name.

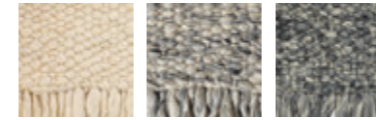


SPECIFICATIONS

| | |
|-------------------|---|
| Material | 60% Wool / 40% Viscose |
| Available Sizes | 70 x 140, 80 x 250, 170 x 240, 200 x 300, 250 x 250, 250 x 350, 300 x 300, 300 x 400 cm |
| Country of origin | India |
| Technique | Flat Weave |
| Certifications | Care & Fair, 16 CFR 1630 |

Dalvik

Dalvik is made from 100% wool from New Zealand. The rug is hand-woven using a special technique that creates the small bubble-like texture in Dalvik. The colours are inspired by Nordic nature, with cool muted tones.



SPECIFICATIONS

| | |
|-------------------|---|
| Material | 100% Undyed Wool |
| Available sizes | 140 x 200, 170 x 240, 200 x 300, 250 x 350 cm |
| Country of origin | India |
| Technique | Flat Weave |
| Certifications | Care & Fair, 16 CFR 1630 |

Scandinavia

Create a calm, relaxing atmosphere in your home with a rug like Scandinavia. The design and expression are deliberately classic, allowing the rug to function as a stylish yet timeless element.

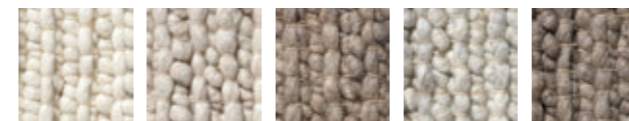


SPECIFICATIONS

| | |
|-------------------|--|
| Material | 100% Wool |
| Available sizes | 70 x 140, 80 x 250, 140 x 200, 170 x 240, 200 x 300, 250 x 250, 250 x 350, 300 x 300, 300 x 400 cm |
| Country of origin | India |
| Technique | Flat Weave |
| Certifications | Care & Fair, 16 CFR 1630 |

Funo

Funo rug has an appearance that is equal parts natural and rustic. The natural wool that the rug is made of emphasises both elements, and the thick yarns give Funo an exclusive natural and distinctive character.



SPECIFICATIONS

| | |
|-------------------|--|
| Material | 100% Wool |
| Available Sizes | 140 x 200, 170 x 240, 200 x 300, 250 x 250, 250 x 350, 300 x 300, 300 x 400 cm |
| Country of origin | India |
| Technique | Pit Loomed |
| Certifications | Care & Fair, 16 CFR 1630 |

Kelo

The Kelo rugs have a simple, linear texture that beautifully blends into any interior and are the perfect example of traditional craft meeting modern materials.



SPECIFICATIONS

| | |
|-------------------|--|
| Material | 100% Undyed Wool |
| Available Sizes | 70 x 140, 80 x 250, 170 x 240, 200 x 300, 250 x 250, 250 x 350, 300 x 300, 300 x 400 cm + Bath Mats: 50 x 80, 60 x 90 cm |
| Country of origin | India |
| Technique | Pit Loomed |
| Certifications | Care & Fair, 16 CFR 1630 |

FABRICS

BOUCLÉ

WOOL

VELVET & CORDUROY

RECYCLED FIBRES

FLAT-WOVEN

COARSE-WOVEN

OUTDOOR FABRICS

LEATHER & NUBUCK

STONES

WOOD & LAMINATE

RUGS

HAND-KNOTTED & LOOM-KNOTTED RUGS

FLAT WEAVE LOOMED & PIT LOOMED RUGS

HAND-TUFTED RUGS

KELIM RUGS

OUTDOOR RUGS

FABRIC & LEATHER OVERVIEW

RUG OVERVIEW



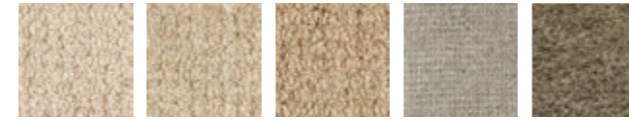
HAND TUFTED RUGS

This technique utilizes a tufting gun that quickens the process of constructing the rug. tufted rugs are similar to loomed rugs but build in different ways. Instead of starting with a warp and making the weft using the loom, a tufted rug starts with a foundation cloth. The foundation cloth is a pre-woven fabric with small squares. Through the little squares in the cloth's weave, they then shoot yarn loops from the back to the front using the tufting gun. Once they finish the whole front surface, they shave down the loops to create an even surface.



Natura

Natura is a classic and timeless rug that will outlast trends and tendencies and remain a beautiful and sophisticated foundation in your interior spaces. Woven by hand with a medium pile and luxuriously soft, woollen texture.



SPECIFICATIONS

| | |
|-------------------|---|
| Material | 100% Undyed Wool |
| Available Size | 80 x 250, 170 x 240, 200 x 300, 250 x 350, 300 x 400, Ø200, Ø250 cm + Doormats: 50 x 70, 60 x 90 cm |
| Country of origin | India |
| Technique | Hand Tufted |
| Certifications | Care & Fair, OEKO-TEX® STANDARD 100 - 2376-403 DTI, 16 CFR 1630 |

Zen

Zen is a beautiful series of rugs with a distinctive design language. Emily Broom won Bolia Design Awards in 2020 with Zen rugs. Her inspiration for the design was everyday life and the need to make your home into a small sanctuary.



SPECIFICATIONS

| | |
|-------------------|--|
| Material | 100% Undyed Wool |
| Available Sizes | Shaped: 140 x 145, 180 x 240, 250 x 233, 300 x 400 cm, Split: 157 x 180, 209 x 240, 250 x 291, 300 x 344 cm Rounded: 134 x 190, 175 x 240, 257 x 330, 300 x 377 cm, Doormat: 60 x 90 cm |
| Country of origin | India |
| Technique | Hand Tufted |
| Certifications | Care & Fair, OEKO-TEX® STANDARD 100 - 2376-403 DTI, 16 CFR 1630 |

FABRICS

BOUCLÉ

WOOL

VELVET & CORDUROY

RECYCLED FIBRES

FLAT-WOVEN

COARSE-WOVEN

OUTDOOR FABRICS

LEATHER & NUBUCK

STONES

WOOD & LAMINATE

RUGS

HAND-KNOTTED &
LOOM-KNOTTED RUGS

FLAT WEAVE LOOMED
& PIT LOOMED RUGS

HAND-TUFTED RUGS

KELIM RUGS

OUTDOOR RUGS

FABRIC & LEATHER
OVERVIEW

RUG OVERVIEW



Sera

An inviting kelim rug, handmade with subtle details like fringing and a delicate, ribbed pattern contrasted by a flatwoven border. A contemporary rug that is at the same time refined and rustic.



SPECIFICATIONS

| | |
|-----------------|---|
| Material | 100% Undyed Wool |
| Available Sizes | 70 x 140, 80 x 250, 170 x 240, 200 x 300, 250 x 250, 250 x 350, 300 x 300, 300 x 400 cm |
| Certifications | |
| Additional info | Rug underlay is included |

KELIM RUGS

FABRICS

BOUCLÉ

WOOL

VELVET & CORDUROY

RECYCLED FIBRES

FLAT-WOVEN

COARSE-WOVEN

OUTDOOR FABRICS

LEATHER & NUBUCK

STONES

WOOD & LAMINATE

RUGS

HAND-KNOTTED &
LOOM-KNOTTED RUGS

FLAT WEAVE LOOMED
& PIT LOOMED RUGS

HAND-TUFTED RUGS

KELIM RUGS

OUTDOOR RUGS

FABRIC & LEATHER
OVERVIEW

RUG OVERVIEW



OUTDOOR RUGS



Kelo Outdoor

The Kelo rug series is designed by Emily Broom. The colours take inspiration from nature - sand, stone and earth, while the innovative yarn is made of 100% recycled PET that is highly durable and weather resistant

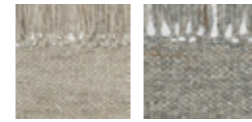


SPECIFICATIONS

| | |
|-------------------|---|
| Material | 100% Recycled Post-Consumer Polyester |
| Available Sizes | 70 x 140, 80 x 250, 170 x 240, 200 x 300, 250 x 250, 250 x 350, 300 x 300, 300 x 400 cm |
| Country of origin | India |
| Technique | Pit Loomed |
| Certifications | Care & Fair, 16 CFR 1630 |

Sera Outdoor

An handcrafted kelim rug with subtle details such as fringes and a fine ribbed pattern that contrasts with the flat, woven edge. A modern rug, woven in 100% recycled PET, which is very durable and weather-resistant.



SPECIFICATIONS

| | |
|-------------------|---|
| Material | 100% Recycled Post-Consumer Polyester |
| Available Sizes | 70 x 140, 80 x 250, 170 x 240, 200 x 300, 250 x 250, 250 x 350, 300 x 300, 300 x 400 cm |
| Country of origin | India |
| Certifications | Care & Fair, 16 CFR 1630 |

FABRICS

BOUCLÉ

WOOL

VELVET & CORDUROY

RECYCLED FIBRES

FLAT-WOVEN

COARSE-WOVEN

OUTDOOR FABRICS

LEATHER & NUBUCK

STONES

WOOD & LAMINATE

RUGS

HAND-KNOTTED & LOOM-KNOTTED RUGS

FLAT WEAVE LOOMED & PIT LOOMED RUGS

HAND-TUFTED RUGS

KELIM RUGS

OUTDOOR RUGS

FABRIC & LEATHER OVERVIEW

RUG OVERVIEW

Bolia Fabric & Leather Overview

| | | | | | |
|---------------|----------------|---|----------------|---|--|
| Nantes | Price Group | Est. Climate Emission | Light Fastness | Care: Removable cover | |
| | 1 | 15 kg CO2eq, pr, 1 m2 upholstery fabric | 5 | | |
| | Composition | Martindale | Pilling | Test and certifications | |
| | 100% Polyester | 120,000 | 4-5 | OEKO-TEX® STANDARD 100 - 1776-271 DTI, CAL TB 117-2013, EN 1021-1 | |

| | | | | | |
|--------------|--------------------------------------|---|----------------|---|--|
| Bergo | Price Group | Est. Climate Emission | Light Fastness | Care: Removable cover | |
| | 3 | 12 kg CO2eq, pr, 1 m2 upholstery fabric | 6-7 | | |
| | Composition | Martindale | Pilling | Test and certifications | |
| | 98% Recycled Polyester, 2% Polyester | 100,000 | 5 | OEKO-TEX® STANDARD 100 - 1076-182 DTI, EU Eco label DS.16.20, CAL TB 117-2013, EN 1021-1, EN 1021-2 | |

| | | | | | |
|--------------|----------------|---|----------------|--|--|
| Baize | Price Group | Est. Climate Emission | Light Fastness | Care: Removable cover | |
| | 3 | 14 kg CO2eq, pr, 1 m2 upholstery fabric | 5 | | |
| | Composition | Martindale | Pilling | Test and certifications | |
| | 100% Polyester | 78,000 | 4-5 | OEKO-TEX® STANDARD 100 - 1776-271 DTI, CAL TB 117, EN 1021-1 | |

| | | | | | |
|-------------|----------------------|--|----------------|--|--|
| Sira | Price Group | Est. Climate Emission | Light Fastness | Care: Removable cover | |
| | 3 | 9 kg CO2eq, pr, 1 m2 upholstery fabric | 4-5 | | |
| | Composition | Martindale | Pilling | Test and certifications | |
| | 100% Recycled Cotton | 60,000 | 3-4 | OEKO-TEX® STANDARD 100 - 1908101, CAL TB 117-2013, EN 1021-1 | |

| | | | | | |
|-------------|--|---|----------------|---|--|
| Soil | Price Group | Est. Climate Emission | Light Fastness | Care: Removable cover | |
| | 3 | 21 kg CO2eq, pr, 1 m2 upholstery fabric | 4-5 | | |
| | Composition | Martindale | Pilling | Test and certifications | |
| | 60% Recycled Polyethylene, 40% Polyester | 100,000 | 4 | OEKO-TEX® STANDARD 100 - 2110214, CAL TB 117-2013, EN 1021-1, EN 1021-2 | |

| | | | | | |
|---------------|-------------|--|----------------|----------------------------------|--|
| Brezza | Price Group | Est. Climate Emission | Light Fastness | Care: Removable cover | |
| | 3 | 3 kg CO2eq, pr, 1 m2 upholstery fabric | 7 | | |
| | Composition | Martindale | Pilling | Test and certifications | |
| | 100% Olefin | 30,000 | 4 | OEKO-TEX® STANDARD 100 - 1105021 | |

| | | | | | |
|---------------|---|---|----------------|---|--|
| Memory | Price Group | Est. Climate Emission | Light Fastness | Care: Removable cover | |
| | 4 | 12 kg CO2eq, pr, 1 m2 upholstery fabric | 5 | | |
| | Composition | Martindale | Pilling | Test and certifications | |
| | 56% Acrylic, 30% Polyester, 7% Viscose, 5% Linen, 2% Cotton | 40,000 | 4-5 | OEKO-TEX® STANDARD 100 - 1908101, CAL TB 117-2013, EN 1021-1, EN 1021-2 | |

| | | | | | |
|-------------|-------------|---|----------------|--|--|
| Qual | Price Group | Est. Climate Emission | Light Fastness | Care: Removable cover | |
| | 4 | 50 kg CO2eq, pr, 1 m2 upholstery fabric | 5 | | |
| | Composition | Martindale | Pilling | Test and certifications | |
| | 100% Wool | 76,000 | 4 | OEKO-TEX® STANDARD 100 - 1076-182 DTI, CAL TB 117-2013, EN 2021-1, EN-2021-2, BS 5852 Source 0 & 1 | |

| | | | | | |
|-------------|-----------------------|--|----------------|--|--|
| Pure | Price Group | Est. Climate Emission | Light Fastness | Care: Removable cover | |
| | 4 | 7 kg CO2eq, pr, 1 m2 upholstery fabric | 5-6 | | |
| | Composition | Martindale | Pilling | Test and certifications | |
| | 60% Cotton, 40% Linen | 24,000 | 4-5 | OEKO-TEX® STANDARD 100 - 1908090, CAL TB 117-2013, EN 1021-1 | |

| | | | | | |
|---------------------|---------------------------|---|----------------|---|--|
| Step Melange | Price Group | Est. Climate Emission | Light Fastness | Care: Removable cover | |
| | 4 | 11 kg CO2eq, pr, 1 m2 upholstery fabric | 8 | | |
| | Composition | Martindale | Pilling | Test and certifications | |
| | 100% Trevira CS Polyester | 100,000 | 4-5 | OEKO-TEX® STANDARD 100 - 1076-182 DTI, EU Eco label DS.16.20, EN 1021-1, EN 1021-2, BS- 5852 Source 0 & 1, BS 5852 Source 5 | |

| | | | | | |
|--------------|----------------------------|---|----------------|---|--|
| Linea | Price Group | Est. Climate Emission | Light Fastness | Care: Removable cover | |
| | 4 | 13 kg CO2eq, pr, 1 m2 upholstery fabric | 5 | | |
| | Composition | Martindale | Pilling | Test and certifications | |
| | 85% Polyester, 15% Acrylic | 100,000 | 4-5 | OEKO-TEX® STANDARD 100 - 1776-271 DTI, CAL TB 117-2013, EN 1021-1-1 | |

| | | | | | |
|---------------|----------------|---|----------------|---|--|
| London | Price Group | Est. Climate Emission | Light Fastness | Care: Removable cover | |
| | 4 | 20 kg CO2eq, pr, 1 m2 upholstery fabric | 4 | | |
| | Composition | Martindale | Pilling | Test and certifications | |
| | 100% Polyester | 100,000 | 4-5 | OEKO-TEX® STANDARD 100 - 1776-271 DTI, CAL TB 117-2013, EN 1021-1 | |

| | | | | | |
|--------------|--------------------|----------------|-----------------------|----------------------------------|--|
| Palma | Price Group | Light Fastness | Care: Removable cover | | |
| | 4 | 6 | | | |
| | Composition | Martindale | Pilling | Test and certifications | |
| | 100% Polypropylene | 50,000 | 5 | OEKO-TEX® STANDARD 100 - 1105021 | |

| | | | | | |
|--------------|-------------|---|----------------|---|--|
| Ocean | Price Group | Est. Climate Emission | Light Fastness | Care: Removable cover | |
| | 4 | 12 kg CO2eq, pr, 1 m2 upholstery fabric | 8 | | |
| | Composition | Martindale | Pilling | Test and certifications | |
| | 100% Olefin | 45,000 | 4 | OEKO-TEX® STANDARD 100 - 1105021, EN 1021-1 | |

| | | | | | |
|-------------|---|---|----------------|---|--|
| Paza | Price Group | Est. Climate Emission | Light Fastness | Care: Removable cover | |
| | 5 | 23 kg CO2eq, pr, 1 m2 upholstery fabric | 5 | | |
| | Composition | Martindale | Pilling | Test and certifications | |
| | 65% Polycarbamide, 27% Polyester, 4% Cotton, 4% Viscose | 60,000 | 4-5 | OEKO-TEX® STANDARD 100 - 1908101, CAL TB 117-2013, EN 1021-1, EN 1021-2 | |

| | | | | | |
|--------------|---|---|----------------------------|---|--|
| Vilme | Price Group 5 | Est. Climate Emission 17 kg CO2eq, pr. 1 m2 upholstery fabric | Light Fastness 5 | Care: Removable cover | |
| | Composition 47% Acrylic, 20% Cotton, 13% Polyester, 11% Viscose, 9% Linen | Martindale 60,000 | Pilling 4 | Test and certifications OEKO-TEX® STANDARD 100 - 1908101, CAL TB 117-2013, EN 1021-1, EN 1021-2 | |

| | | | | | |
|--------------|---|---|----------------------------|--|--|
| Ascot | Price Group 5 | Est. Climate Emission 30 kg CO2eq, pr. 1 m2 upholstery fabric | Light Fastness 5 | Care: Removable cover | |
| | Composition 39% Polyacrylic, 39% Polyester, 14% Cotton, 8% Wool | Martindale 28,000 | Pilling 4-5 | Test and certifications OEKO-TEX® STANDARD 100 - 1908090, CAL TB 117-2013, EN 1021-1 | |

| | | | | | |
|-------------|---|---|------------------------------|---|--|
| Gaja | Price Group 5 | Est. Climate Emission 46 kg CO2eq, pr. 1 m2 upholstery fabric | Light Fastness 5-7 | Care: Removable cover | |
| | Composition 100% New Zealand Wool | Martindale 50,000 | Pilling 4-5 | Test and certifications OEKO-TEX® STANDARD 100 - 1076-182 DTI, EU Eco label DS.16.20, CAL TB 117-2013, EN 1021-1, EN 1021-2, BS 5852 Source O & 1 | |

| | | | | | |
|------------|---|---|----------------------------|---|--|
| Tie | Price Group 5 | Est. Climate Emission 15 kg CO2eq, pr. 1 m2 upholstery fabric | Light Fastness 5 | Care: Removable cover | |
| | Composition 45% rPET, 32% Acrylic, 10% Recycled Preconsumer Cotton, 7% Polyester, 6% Wool | Martindale 35,000 | Pilling 4-5 | Test and certifications OEKO-TEX® STANDARD 100 - 2110214, BS 5852 Source O & 1, CAL TB 117-2013 | |

| | | | | | |
|-------------|---|---|----------------------------|---|--|
| Revi | Price Group 5 | Est. Climate Emission 17 kg CO2eq, pr. 1 m2 upholstery fabric | Light Fastness 5 | Care: Removable cover | |
| | Composition 100% Recycled Polyester | Martindale 100,000 | Pilling 5 | Test and certifications OEKO-TEX® STANDARD 100 - 2206139, CAL TB 117-2013, EN 1021-1, EN 1021-2 | |

| | | | | | |
|--------------|--|---|------------------------------|---|--|
| Laine | Price Group 6 | Est. Climate Emission 46 kg CO2eq, pr. 1 m2 upholstery fabric | Light Fastness 6-7 | Care: Removable cover | |
| | Composition 92% Wool, 8% Polyamide | Martindale 95,000 | Pilling 3-4 | Test and certifications OEKO-TEX® STANDARD 100 - 1076-182 DTI, EU Eco label DS.16.20, CAL TB 117-2013, BS 5852 Source O & 1, BS 5852 Source 5, EN 1021-1, EN 1021-2 | |

| | | | | | |
|--------------|--|---|----------------------------|--|--|
| Globa | Price Group 6 | Est. Climate Emission 15 kg CO2eq, pr. 1 m2 upholstery fabric | Light Fastness 5 | Care: Removable cover | |
| | Composition 46% Polyester, 46% Acrylic, 8% Viscose | Martindale 25,000 | Pilling 4-5 | Test and certifications OEKO-TEX® STANDARD 100 - 1505024, Centexbel, CAL TB 117-2013, EN 1021-1, EN 1021-2 | |

| | | | | | |
|-------------|---------------------------------|---|------------------------------|---|--|
| Mira | Price Group 6 | Est. Climate Emission 90 kg CO2eq, pr. 1 m2 upholstery fabric | Light Fastness 4-5 | Care: Removable cover | |
| | Composition 100% Wool | Martindale 70,000 | Pilling 3-4 | Test and certifications OEKO-TEX® STANDARD 100 - 1812101, CAL TB 117-2013, EN 1021-1, EN 1021-2, BS 5852 Source O & 1, BS 5852 Source 5 | |

| | | | | |
|--------------|---|---|----------------------------|---|
| Monza | Price Group 6 | Est. Climate Emission 30 kg CO2eq, pr. 1 m2 upholstery fabric | Light Fastness 7 | |
| | Composition 28% Acrylic, 24% Cotton, 20% Viscose, 16% Wool, 12% Polyester | Martindale 80,000 | Pilling 4 | Test and certifications OEKO-TEX® STANDARD 100 - 1812101, CAL TB 117-2013, EN 1021-1, EN 1021-2 |

| | | | |
|-------------------------|---|---|--|
| Quattro by Spoor | Price Group 7 | Light Fastness 4-5 | |
| | Composition 100% Surface -Treated Leather | Test and certifications CAL TB 117-2013, EN 1021-1, EN 1021-2, BS 5852 Source O & 1 | |

| | | | | |
|-------------------------|--|---|----------------------------|--|
| Sydney Traceable | Price Group 7 | Est. Climate Emission 65 kg CO2eq, pr. 1 m2 upholstery fabric | Light Fastness 3 | |
| | Composition 100% Aniline Leather | Test and certifications OEKO-TEX® LEATHER - 2276-359L DTI, STANDARD, BS 5852 Source O & 1 | | |

| | | | | |
|----------------------|--|--|----------------------------|--|
| Austin Nubuck | Price Group 8 | Est. Climate Emission 65 kg CO2eq, pr. 1 m2 upholstery fabric | Light Fastness 3 | |
| | Composition 100% Aniline Leather | Test and certifications OEKO-TEX® LEATHER STANDARD, BS 5852 Source O & 1, EN 1021-1, EN 1021-2 | | |

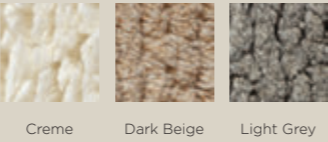
| | | | | |
|--------------|--------------------------------------|--|--|--|
| Vella | Price Group 9 | Est. Climate Emission 140 kg CO2eq, pr. 1 m2 upholstery fabric | Light Fastness 3 | |
| | Composition 100% Sheepskin | Martindale 32,000 | Test and certifications OEKO-TEX® LEATHER STANDARD - 2376-370L DTI | |

*New colour name. Previous name: Cognac.

Bolia Rug Overview

Alve

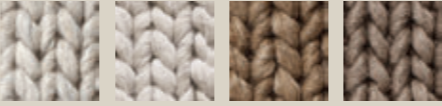
| | |
|-------------------------|---|
| Composition | 100% New Zealand Wool |
| Test and certifications | Care & Fair, 16 CFR 1630 |
| Available Sizes | 140 x 200, 170 x 240, 200 x 300, 250 x 350, Ø200, Ø250 cm |



Creme Dark Beige Light Grey

Braid

| | |
|-------------------------|--|
| Composition | 60% Wool, 40% Viscose |
| Test and certifications | Care & Fair, 16 CFR 1630 |
| Available Sizes | 70 x 140, 80 x 250, 140 x 200, 170 x 240, 200 x 300, 250 x 250, 250 x 350, 300 x 300, 300 x 400 cm |



Creme Light Grey Grey Brown Warm Grey

Brida

| | |
|-------------------------|---|
| Composition | 100% Linen |
| Test and certifications | Care & Fair, 16 CFR 1630 |
| Available Sizes | 70 x 140, 80 x 250, 140 x 200, 170 x 240, 200 x 300, 250 x 350 cm |



Sand Beige Light Grey

Dalvik

| | |
|-------------------------|---|
| Composition | 100% Undyed Wool |
| Test and certifications | Care & Fair, 16 CFR 1630 |
| Available Sizes | 140 x 200, 170 x 240, 200 x 300, 250 x 350 cm |



White Light grey Grey

Funo

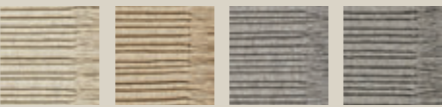
| | |
|-------------------------|--|
| Composition | 100% Wool |
| Test and certifications | Care & Fair, 16 CFR 1630 |
| Available Sizes | 140 x 200, 170 x 240, 200 x 300, 250 x 250, 250 x 350, 300 x 300, 300 x 400, Ø200, Ø250 cm |



Creme Light Beige Dark Beige Light Grey Dark Grey

Kelo

| | |
|-------------------------|---|
| Composition | 100% Undyed Wool |
| Test and certifications | Care & Fair, OEKO-TEX® STANDARD 100 - 2376-404 DTI |
| Available Sizes | 70 x 140, 80 x 250, 170 x 240, 200 x 300, 250 x 250, 250 x 350, 300 x 300, 300 x 400 cm + Bath Mats: 50 x 80, 80 x 200 cm |



Creme Light Beige Light Grey Grey

Kelo Outdoor

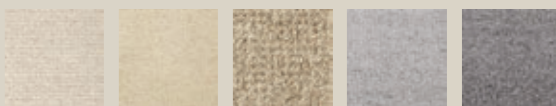
| | |
|-------------------------|---|
| Composition | 100% Recycled Post-Consumer Polyester |
| Test and certifications | Care & Fair, OEKO-TEX® STANDARD 100 - 2376-404 |
| Available Sizes | 70 x 140, 80 x 250, 170 x 240, 200 x 300, 250 x 250, 250 x 350, 300 x 300, 300 x 400 cm |



Creme Light Grey

Natura

| | |
|-------------------------|---|
| Composition | 100% Wool |
| Test and certifications | Care & Fair, OEKO-TEX® STANDARD 100 - 2376-403 DTI, 16 CFR 1630 |
| Available Sizes | 80 x 250, 170 x 240, 200 x 300, 250 x 350, 300 x 400, Ø200, Ø250 cm + Doormats: 50 x 70, 60 x 90 cm |



Creme Light Beige Beige Light Grey Dark Grey

Scandinavia

| | |
|-------------------------|--|
| Composition | 100% Wool |
| Test and certifications | Care & Fair, 16 CFR 1630 |
| Available Sizes | 70 x 140, 80 x 250, 140 x 200, 170 x 240, 200 x 300, 250 x 250, 250 x 350, 300 x 300, 300 x 400 cm |



Light Grey Grey Dark Beige Charcoal

Sera

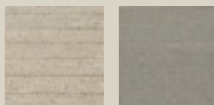
| | |
|-------------------------|--|
| Composition | 100% Undyed Wool |
| Test and certifications | Care & Fair, OEKO-TEX® STANDARD 100 - 2376-404 DTI, 16 CFR 1630 |
| Available Sizes | 70 x 140, 80 x 250, 140 x 200, 170 x 240, 200 x 300, 250 x 250, 250 x 350, 300 x 300, 300 x 400 cm |



Creme Sand Grey

Sera Outdoor

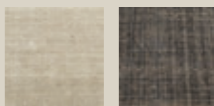
| | |
|-------------------------|---|
| Composition | 100% Recycled Post-Consumer Polyester |
| Test and certifications | Care & Fair, OEKO-TEX® STANDARD 100 - 2376-404 DTI |
| Available Sizes | 70 x 140, 80 x 250, 170 x 240, 200 x 300, 250 x 250, 250 x 350, 300 x 300, 300 x 400 cm |



Sand Grey

Vilde

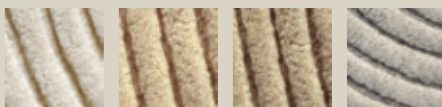
| | |
|-------------------------|--|
| Composition | 50% Linen, 50% Wool |
| Test and certifications | Care & Fair, 16 CFR 1630 |
| Available Sizes | 70 x 140, 80 x 250, 140 x 200, 170 x 240, 200 x 300, 250 x 350, 300 x 400 cm |



Beige Grey

Zen

| | |
|-------------------------|--|
| Composition | 100% Undyed Wool |
| Test and certifications | Care & Fair, OEKO-TEX® STANDARD 100 - 2376-403 DTI, 16 CFR 1630 |
| Available Sizes | Shaped: 140 x 145, 180 x 240, 250 x 233, 300 x 400 cm. Split: 157 x 180, 209 x 240, 250 x 291, 300 x 344 cm. Rounded: 134 x 190, 175 x 240, 257 x 330, 300 x 377 cm. Doormat: 60 x 90 cm |



Creme Beige Dark Beige Light Grey

Notice: All rugs are handmade which means they can vary in size.
 Maintenance: Vacuum clean without brush.
 Wash Instructions: Dry clean flat by professionals.



**spencer
interiors**

spencer Interiors > www.spencerinteriors.com

BOLIA