

Thank you for purchasing the BIOS Diagnostics™ High Precision Thermometer with Bluetooth. To correctly utilize all the advantages of this product, please familiarize yourself with these operating instructions before using the thermometer for the first time. Keep the instructions in a safe place for future reference.

INDICATIONS FOR USE:

This digital thermometer (239DI) is intended to measure the human body’s temperature in regular mode, orally, rectally or under the arm. This device was designed to be reusable for clinical or home use, on people of all ages.

SAFETY INFORMATION:

- High, prolonged fever requires medical attention, especially for young children. Please contact your physician should this occur.
- This thermometer contains small pieces that can pose a choking hazard. Do not allow children to take their own temperatures unattended.
- Keep battery away from children, harmful if swallowed.
- **Do not** open the thermometer except to replace the battery.
- To avoid damage to the probe, do not bend beyond a 45° angle.
- Use of a probe cover may result in a 0.1°C (0.2°F) discrepancy from actual temperature.
- **Do not** boil probe to disinfect.
- **Do not** store in direct sunlight or in areas of extreme heat.

°C / °F SWITCHABLE

Temperature readings are available in Celsius or Fahrenheit (°C/°F; located in the upper right corner of display field). With the device off, press and hold the **On/Off** button for approx. 3 seconds. The display will briefly show **LO** and beep once. The following screen will appear **LO** °F and the new °C or °F symbol will appear and will be flashing. This will indicate that the change was successful. You can now turn off the device.

BLUETOOTH & MEDILINK APP

For the most up to date information on what Android and iOS operating systems are compatible with our device applications please visit: biosmedical.com, the Apple Store, or the Play Store.

PLEASE NOTE: Android and iOS system and software updates may render the app obsolete on older devices.

This thermometer and the MediLink App can work independently of each other. However, you will want to pair the thermometer and the App before using the thermometer, as it will send the reading to the App once it is completed.

1. To begin using the free MediLink App, download and install onto your smartphone or tablet.



2. Turn ON Bluetooth on your device.
3. Open the MediLink App. First time users, will need to register and create a password
4. With the app open to the temperature tab, select ‘Add Thermometers’. **(Figure 1)**
5. Select your device from the list of Thermometers. **(Figure 2).**
6. Follow the instructions on your phone screen to pair the device.
A pop up asking you ‘Is this your thermometer?’ will appear. Select Yes. **(Figure 3)**
7. Device has paired successfully when you can see the device listed at the bottom of your app home screen. **(Figure 4)**

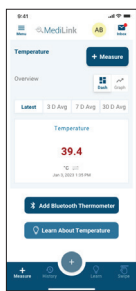


Figure 1



Figure 2

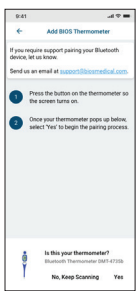


Figure 3

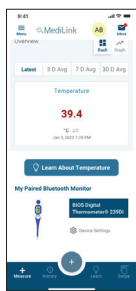


Figure 4

NOTE: For more information on the App and how to use it, visit our website www.biosmedical.com or call our BIOS Medical Hotline: 1-866-536-2289

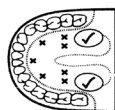
HOW TO TAKE A TEMPERATURE

1. Push the **On/Off** button on the thermometer. It will beep and the display will read: **LO**. This is a function check indicating that the unit is working properly. Should there be a reading in the memory it will appear, then “LO°C”, the Bluetooth icon and the °C or °F icons will be visible and it is ready to take a reading.
IMPORTANT: **LO** does not refer to the battery level.
2. While taking a temperature, the °C/°F symbol flashes as long as the temperature increases.
3. A beep will sound for 10 seconds indicating that the peak temperature has been reached.
Note: This high precision thermometer is programmed with a 60 second reading time. Please note however, that reading time varies, and may increase beyond 60 seconds depending on the measurement method used.
4. To prolong the life of the battery, turn the thermometer off after each use by pressing the **On/Off** button briefly, otherwise the unit will turn off automatically in approximately 10 minutes.
Note: The LCD will display “LO” if the measurement taken is below 32.0°C /89.60°F. It will display “HI” if the measurement is above 42.99°C /109.38°F.

Note: When the LCD displays “----” this means that the thermometer is waiting for Bluetooth connection, you only have 30 seconds to connect your thermometer, otherwise it will skip the Bluetooth connection and go into the normal temperature measurement screen with one beep.

ORAL USE:

- **Do not** drink hot or cold fluids, exercise, smoke, or perform other activities prior to a measurement. These actions will raise or lower temperature readings when compared to your normal, average temperature. The mouth should remain closed for up to 5 minutes before attempting a reading.
- Place the probe tip well under the tongue and wait until a beep is heard. Instruct children not to bite down on the probe.



AXILLARY USE:

- Wipe underarm with a dry towel.
- Place the probe tip in the hollow of the armpit and bring arm down against the body and wait until a beep is heard.

RECTAL USE:

- Commonly used for babies, young children, or when it is difficult to take an oral or axillary (underarm) temperature.
- Lubricate the thermometer with a water-soluble personal lubricant or petroleum jelly.

- Gently insert the probe tip no more than ½" / 1.3 cm into the rectum, and wait until a beep is heard.

IMPORTANT: Do not force the tip into the rectum if resistance is encountered

WHAT IS "NORMAL" BODY TEMPERATURE?

"Normal" body temperature varies from person to person and changes according to time of day and body location. The following table shows the temperature ranges:

	Fever Temperature	Temperature Ranges
Rectal*	Over 38°C / 100.4°F	36.6°C – 38°C / 97.8°F – 100.4°F
Oral (mouth)*	Over 37.5°C / 99.5°F	35.5°C – 37.5°C / 95.9°F – 99.5°F
Axillary (underarm)*	Over 37.2°C / 99°F	36.5°C – 37.2°C / 97.7°F – 99°F

*Fever definitions according to the Canadian Paediatric Society

IMPORTANT: It is recommended to measure the body temperature when healthy to establish the specific "normal" temperature.


MEMORY RECALL:

This thermometer has a memory which recalls the last temperature taken. To obtain this information, with the thermometer off, press the On/Off button. The screen will then display the last measurement, which will be deleted after the next temperature is taken.


CLEANING AND DISINFECTING:

Before and after each use, clean the thermometer with warm soapy water and a soft cloth. Disinfect using a cotton ball moistened with alcohol. Never immerse in hot water or in harsh cleaning solutions.

CHANGING THE BATTERY:


When the  appears in the lower right hand corner of the LCD display, the battery is exhausted and needs replacing. Remove the battery compartment lid located on the back of the thermometer. Use a coin or flat head screwdriver to open. Discard the old battery and insert a new equivalent battery (CR2032, 3V). Ensure the battery is correctly positioned with the "+" facing up or towards the back of the unit. Replace battery compartment lid.

TROUBLESHOOTING:

Error message	Problem	Solution
Lo	Temperature taken is lower than 32.00°C (89.60°F)	Turn off, wait one minute and take a new temperature.
Hi	Temperature taken is higher than 42.99°C (109.38°F)	Turn off, wait one minute and take a new temperature.
Err	The system is not functioning properly	Unload the battery, wait for 1 minute and repower it. If the message reappears, contact the retailer for service.
	Battery is depleted	Replace the battery

SPECIFICATIONS:

Type:	Digital Thermometer (Not Predictive)
Temperature Range:	32°C to 42.9°C (89.6°F to 109.3°F)
Accuracy:	±0.05°C(±0.1°F) during 35.00°C - 38.00°C (95.00°F - 100.40°F) ±0.1°C (±0.2°F) during T<35.00°C (95.00°F) or T>38.00°C (100.40°F)
Operating mode:	Direct Mode
Display:	Liquid crystal display, 4½ digits
Memory:	For storing the last measured value
Battery:	One 3.0V DC button battery type CR2032
Battery life:	Eight months with 3 measurements per day
Dimension:	13.4 cm × 3.1 cm × 1.6 cm (L x W x H)
Weight:	Approx. 26 grams including battery
Expected service life:	Three years
Ambient operating range:	Temperature: 5°C - 40°C (41°F - 104°F) Relative humidity: 15%~95%RH Atmospheric Pressure : 700hPa ~ 1060hPa
Storage and transportation condition:	Temperature: -20°C - 55°C (-4°F - 131°F) Relative humidity: 15%~95%RH Atmospheric Pressure : 700hPa ~ 1060hPa
Ingress Protection Rating:	IP 27
Classification:	Type BF

 Follow Instructions for Use. This document provides important product information and safety information. Please read this document thoroughly before using the device and keep for future reference

 Type BF Applied part

 Batteries and electronic devices must be disposed of in accordance with the locally Applicable regulations, not with domestic waste.

IP22: Protected against solid foreign objects of 12.5 mm diameter and greater. Protected against vertically falling water drops when the device is tilted up to 15°.

FCC STATEMENT:

Caution: Changes or modifications to this unit not expressly approved by the party responsible for compliance could void the user authority to operate the equipment. This device complies with Part 15 of the FCC Rules. Operation is subject to the following two conditions:

- (1) this device may not cause harmful interference, and
- (2) this device must accept any interference received, including interference that may cause undesired operation.

***Note:** This equipment has been tested and found to comply with the limits for a Class B digital device, pursuant to Part 15 of the FCC Rules. These limits are designed to provide reasonable protection against harmful interference in a residential installation. This equipment generates, uses, and can radiate radio frequency energy. If this equipment does cause harmful interference to radio or television reception, which can be determined by turning the equipment off and on, the user is encouraged to try and correct the interference by one or more of the following measures:

- Reorient or relocate the receiving antenna.
- Increase the distance between the equipment and the receiver.
- Connect the equipment to an outlet on a circuit different from that to which the receiver is connected.
- Consult the dealer or an experienced radio/TV technician for help.

LIMITED 2 YEAR WARRANTY:

This High Precision Thermometer with Bluetooth has a 2 year limited warranty to be free of manufacturing defects for the life of the original owner. The warranty does not cover damage from misuse or tampering.

100% Satisfaction Guarantee

If at any time, you are not completely satisfied with the performance of this device, call our BIOS Medical Hotline and speak with a customer service representative, who will make arrangements to have the device tested or replaced to your full satisfaction.

If you have questions regarding the operation of your thermometer call the

BIOS Medical Hotline: 1-866-536-2289

Should correction be necessary, return the unit with all component pieces. Enclose proof of purchase and \$5.00 for return shipping and insurance. Ship the unit **prepaid** and insured (at owners option) to:

Thermor Ltd.

Returns Department
16975 Leslie Street
Newmarket, ON L3Y 9A1
www.biosmedical.com
Email: support@biosmedical.com

Please include your name, return address, phone number, and email address. Thermor will test or replace (at Thermor's option) free of charge any parts necessary to correct the defect in material or workmanship.

Please allow 10 days for return shipping.



BIOS | Medical
MANUFACTURED BY / FABRIQUÉ PAR :
THERMOR LTD.
16975 LESLIE STREET
NEWMARKET, ON L3Y 9A1
MADE IN CHINA / FABRIQUÉ EN CHINE
WWW.BIOSMEDICAL.COM