



**GET MORE FROM YOUR  
MOBILITY AID**

# **5-in-1 Mobility & Bathroom Aid**

## **56120**

### **Instruction Manual**



12.11.18

## Introduction

Thank you for purchasing the BIOS Living 5-in-1 Mobility and Bathroom Aid.



1. Folding Walker



2. Commode



3. Raised Toilet Seat



4. Toilet Seat Frame



5. Shower Seat

## Features:

- Lightweight aluminum “Your walker walks with you” frame
- 2 sets of comfortable hand grips
- Rubber feet to prevent slipping
- Adjustable height: 30” – 38” / 76 – 96.3 cm
- Frame width: 21” / 53 cm
- Weight capacity: 300 lbs / 136 kg

## Contents:

- Lightweight aluminum frame
- Commode pail
- Non-slip foam cushion
- Plastic seat with commode cut out
- Black tote bag

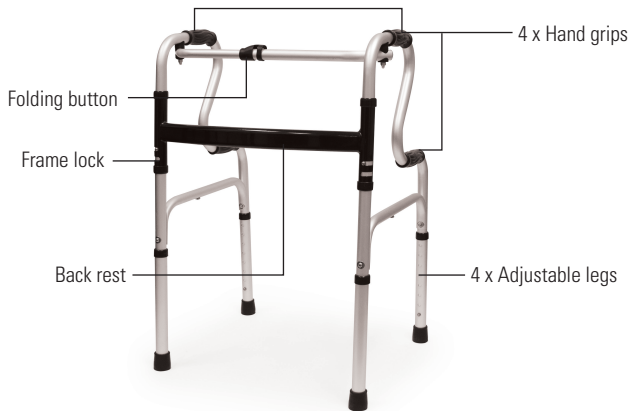
## ⚠ Caution:

- **Do not** assemble or use this equipment without first reading and understanding this instruction manual. Failure to apply the cautions below could result in injury.
- **Do not** exceed the maximum weight capacity of 300 lbs / 136 kg. Doing so may result in injury.
- Consult with your healthcare provider in determining the suitability of the device for the particular user.

## 1. Folding Walker

- **Do not** use on stairs or escalators.
- When turning around, bring the walker around you without twisting your back – you should always be facing the front of the walker.
- Always be aware of your surroundings and obstacles i.e. electrical cords, throw rugs, toys, etc.
- Stay upright when you move, this will help walking behind it.
- Be careful not to push the walker too far ahead of you.
- Avoid hurrying and taking large steps when you turn. Change directions slowly.
- **Do not** overload your walker.
- Consult your doctor or therapist for help selecting and maintaining your walker.

### 1A. About the aluminum frame:



### 1B. How to use the folding walker:

The aluminum folding walker comes fully assembled; you will only have to adjust the legs to the appropriate position and height.

1. To open or close the frame press the button located in the middle of the frame.



**Important: The frame should be completely open before use.**

## “Your walker walks with you” feature:

Unlike traditional walkers, which are designed to be pushed in front of you, the BIOS Living 5-in-1 Mobility & Bathroom Aid is designed with a frame that features the “Your walker walks with you” function. The frame can be locked, like a traditional walker or when the frame is unlocked the walker walks with you as you move. The frame shifts on its hinges following your hand movements. As you lift the walker to step you slightly push the frame forward with your hand and the frame follows your hand movement sliding to the left or right to walk with you.



2. To disable the “Your walker walks with you” feature and lock your frame; start by pressing the folding button in the center on the top frame bar.



3. Fold both arms of the walker in slightly, adjust the frame lock located on the outside of the black back rest. Move the metal pins from the down position to up on both sides of the back rest ensuring the metal pins “CLICK” completely into place. The frame will now be locked. (Fig 1-3.)

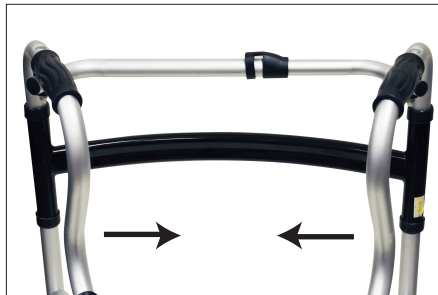


Fig 1.



Fig 2.



Fig 3.



4. To fit your walker, start with your arms resting at your sides. Adjust all 4 legs by moving them UP or DOWN and line up the metal pins with the corresponding holes; ensure the metal pins "CLICK" completely into place. Adjust the legs so that the handles are at the height of your wrists. Make sure the height of each leg is the same.
5. With your hands placed on the upper hand grips, your elbow should be flexed 15° – 20°.
6. If you find that you have to stoop down or bring your arms up to reach the walker, adjust the legs to find the best and comfortable height.
7. Always make sure to place your hands equally on either upper hand grips. This will distribute your weight evenly across the walker and make it safe to support you while you move.

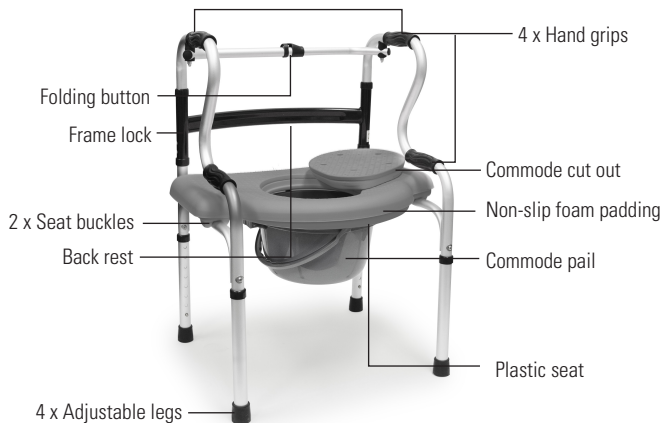
---

## 2. Commode

---

**IMPORTANT:** Always make sure all 4 legs are the same height before using.

### 2A. About the Commode:

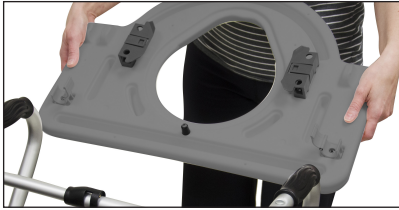


### 2B. How to use the commode:

1. Stand with the aluminum frame open in front of you, the frame needs to be in the locked position for this application for safety.

**NOTE:** If you want to use the non-slip foam padding, place it on the plastic seat before securing the plastic seat to the aluminum frame.

2. Holding the plastic seat turn it over, there are 2 buckles and 2 frame grooves on each side of the seat. Make sure that the 2 buckles are open. There are also 2 gray holders on either side of the commode cut out, these are to hold the commode pail. (Fig 4-5.)

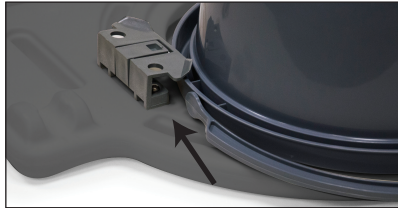


**Fig 4.**



**Fig 5.**

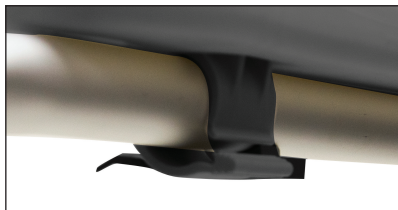
3. Remove the commode cut out from the plastic seat and remove the lid from the commode pail. Slide the pail through the gray holders.



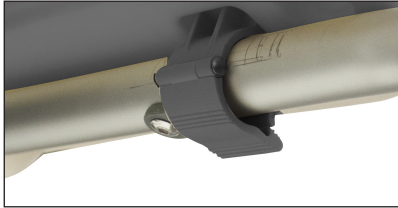
4. Turning the plastic seat around, place the seat on the bottom bars of the frame.



5. Press down on the seat until you here a "CLICK". Make sure the seat is level.
6. To lock the buckles around the frame, reach underneath the seat, close the buckles around the frame.



- Each buckle has 2 sets of grooves on them. Finding the grooves on the center of the buckle push on them until you hear a “CLICK”. This indicates that the buckles are locked (**Fig 6-7**).



**Fig 6.**



**Fig 7.**

- Give the seat a little tug to make sure it is secure.
- It is recommended to use commode pail liners for easier clean up.
- Wipe down or clean the plastic seat and handgrips after each use.

---

### 3. Raised Toilet Seat

**IMPORTANT:** Always make sure all 4 legs are the same height before using.

#### 3A. About the raised toilet seat:

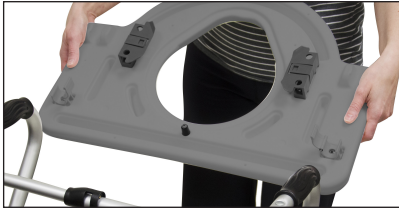


#### 3B. How to use the raised toilet seat:

- With the aluminum frame in the locked position for safety place the frame around the toilet bowl with the toilet seat lid up. The frame that holds the seat should clear the toilet bowl and lid.

**NOTE: You may have to adjust all 4 leg heights to the desired height needed to aid in sitting down or getting up from the toilet.**

2. Remove the commode cut out from the plastic seat.
3. Attach the non-slip foam padding to the plastic seat.
4. Holding the plastic seat turn it over, you will see 2 buckles and 2 frame grooves on each side of the seat. Make sure that the 2 buckles are open. **(Fig 8-9)**



**Fig 8.**

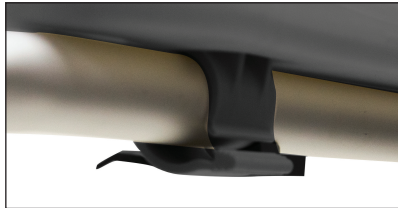


**Fig 9.**

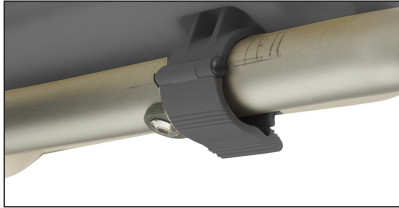
5. Turning the plastic seat around, place the seat on the bottom bars of the frame.



6. Press down on the seat until you here a "CLICK". Make sure the seat is level.
7. To lock the buckles around the frame, reach underneath the seat, close the buckles around the frame.



- Each buckle has 2 sets of grooves on them. Finding the grooves on the center of the buckle push on them until you hear a "CLICK". This indicates that the buckles are locked. **(Fig 10-11)**



**Fig 10.**



**Fig 11.**

- Give the seat a little tug to make sure it is secure.
- Use the lower hand grips for support when sitting down or getting up from the raised toilet seat.
- Wipe down or clean the plastic seat and handle grips after each use.

---

## 4. Toilet Seat Frame

**IMPORTANT:** Always make sure all 4 legs are the same height before using.

### 4A. About the toilet seat frame:



## 4B. How to use the toilet seat frame:

Unlike some toilet safety frames, this device does not attach to the toilet lid. This is a stand alone toilet seat frame device. When standing up or sitting down, take care to evenly distribute your weight on either set of hand grips for support and safety.

1. With the aluminum frame in the locked position for safety, place the frame around the toilet bowl with the toilet seat lid up.

**NOTE: You may have to adjust all 4 leg heights to the desired height needed to aid in sitting down or getting up from the toilet.**

2. Use the lower hand grips for support when sitting down or getting up from the raised toilet seat.
3. Wipe down or clean the handgrips after each use.

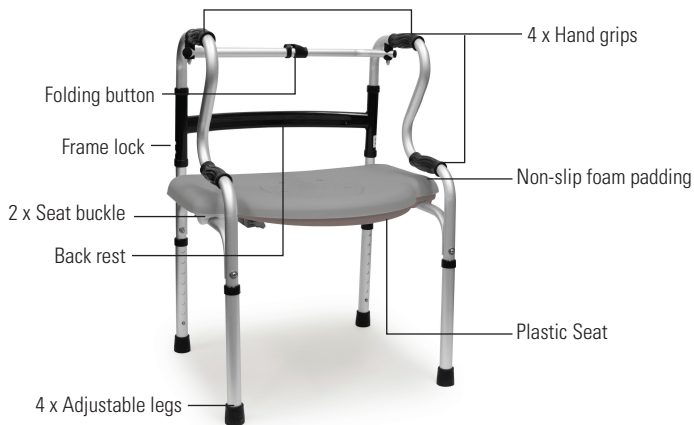
---

## 5. Shower Seat

This shower seat is not suitable for use as a bath step.

**IMPORTANT:** Always make sure all 4 legs are the same height before using.

### 5A. About the shower seat:



### 5B. How to use the shower seat:

1. Stand with the aluminum frame open in front of you, the frame needs to be in the locked position for this application for safety.

**NOTE: You may have to adjust all 4 leg heights to the desired height needed to aid in sitting down or getting up from the shower seat.**

- Place the non-slip foam padding on top of the plastic seat.
- Holding the plastic seat turn it over, you will see 2 buckles and 2 frame grooves on each side of the seat. Make sure that the 2 buckles are open. **(Fig 12-13)**



**Fig 12.**

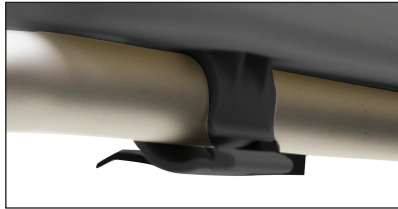


**Fig 13.**

- Make sure the commode cut out piece is in the plastic seat if it was removed when being used in any of the other applications.
- Press down on the seat until you here a “CLICK”. Make sure the seat is level.



- To lock the buckles around the frame, reach underneath the seat, close the buckles around the frame.



- Each buckle has 2 sets of grooves on them. Finding the grooves on the center of the buckle push on them until you hear a “CLICK”. This indicates that the buckles are locked **(Fig 14-15)**.



**Fig 14.**



**Fig 15.**

10. Give the seat a little tug to make sure it is secure.
11. Use the hand grips for support when sitting down or getting up from the shower seat.
12. Remove the non-slip foam from the seat to allow both to dry and leave the shower seat to dry before using it in any of the other applications.

---

### **One Year Limited Warranty:**

This product is warranted to be free from defects in material or workmanship within one year of purchase of the aluminum frame only, of the original owner. It will be repaired or replaced without charge upon receipt of the unit prepaid with \$20.00 to cover handling, packaging and return postage to address below.

This warranty does not extend to normal wear and tear, replacements, alterations, product abuse, misuse, hygienic use, and accidental damage. Rental of this product voids the warranty.

Ship the unit prepaid and insured (at owners option) to:

Thermor Ltd.  
Repair Department  
16975 Leslie Street  
Newmarket, ON L3Y 9A1  
[www.biosmedical.com](http://www.biosmedical.com)  
Email: [support@biosmedical.com](mailto:support@biosmedical.com)

Please include proof of purchase, your name, return address, phone number, and email address. Thermor Ltd. will repair or replace (at Thermor Ltd. option) free of charge any parts necessary to correct the defect in material or workmanship.

Please allow 10 days for repair and return shipping.

BIOS I Medical  
MANUFACTURED BY / FABRIQUÉ PAR :  
**THERMOR LTD.**  
16975 LESLIE STREET  
NEWMARKET, ON L3Y 9A1  
MADE IN CHINA / FABRIQUÉ EN CHINE  
[WWW.BIOSMEDICAL.COM](http://WWW.BIOSMEDICAL.COM)